

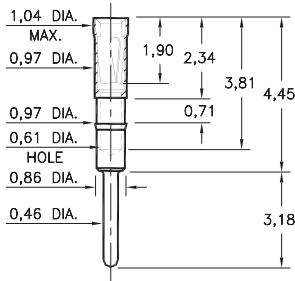
# PIN RECEPTACLES

**FOR 0,38 - 0,46 DIAMETER PINS (#09 CONTACT)  
FOR 0,38 - 0,51 DIAMETER PINS (#11 CONTACT)  
AND 0,38 - 0,56 DIAMETER PINS (#21 CONTACT)**

## 0467

**0467-0-15-XX-21-XX-04-0**

Press-fit in 0,94 mounting hole



## 0552

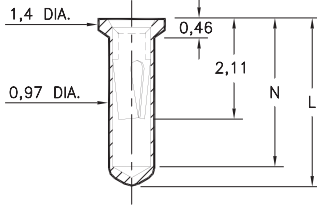
**0552-X-15-XX-X1-XX-10-0**

Solder mount in 1,02 min. mounting hole

Also available on 16mm wide carrier tape:

1,500 parts per 330mm reel

Order as: 0552-X-57-XX-X1-XX-10-0

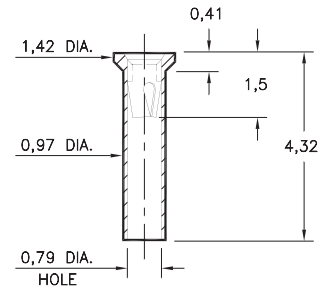


Basic Part Number	Length L	Depth N
<b>0552-1</b>	3,45	3,05
<b>0552-2</b>	4,32	3,81

## 5522

**5522-0-15-XX-09-XX-10-0**

Solder mount in 1,02 min. mounting hole



## 0569

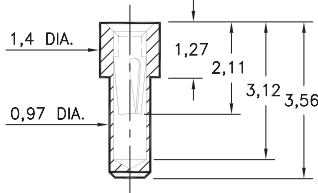
**0569-0-15-XX-X1-XX-10-0**

Solder mount in 1,02 min. mounting hole

Also available on 16mm wide carrier tape:

2,000 parts per 330mm reel

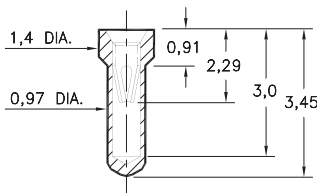
Order as: 0569-0-57-XX-X1-XX-10-0



## 6023

**6023-0-15-XX-21-XX-10-0**

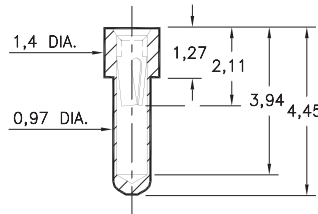
Solder mount in 1,02 min. mounting hole



## 6214

**6214-0-15-XX-21-XX-10-0**

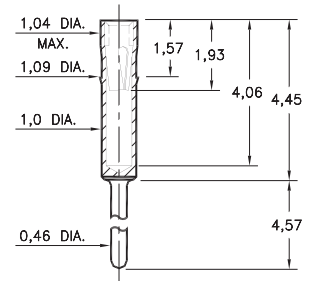
Solder mount in 1,02 min. mounting hole



## 2086

**2086-0-15-XX-21-XX-04-0**

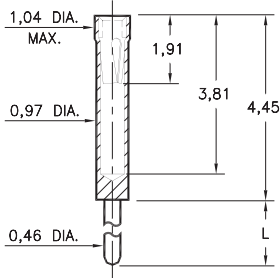
Press-fit in 1,02 mounting hole



## 0461

**0461-X-15-XX-X1-XX-04-0**

Solder mount in 0,51 min. mounting hole



Basic Part Number	Length L
<b>0461-0</b>	10,16
<b>0461-1</b>	6,99
<b>0461-2</b>	4,57
<b>0461-3</b>	3,18
<b>0461-4</b>	1,52
<b>0461-5</b>	11,18

## 8579

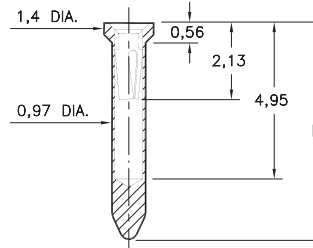
**8579-X-15-XX-X1-XX-10-0**

Solder mount in 1,02 min. mounting hole

Also available on 24mm wide carrier tape:

1,200 parts per 330mm reel

Order as: 8579-0-57-XX-X1-XX-10-0



Basic Part Number	Length L
<b>8579-0</b>	5,94
<b>8579-1</b>	7,49

### SPECIFICATIONS:

**Shell Material:** Brass Alloy 360, 1/2 Hard

**Contact Material:** Beryllium Copper Alloy 172, HT

**Dimensions:** Millimeters

**Tolerances On:** Lengths: ± 0,13

Diameters: ± 0,051

Angles: ± 2°



**ORDER CODE: XXXX - X - XX - XX - XX - XX - 0**

**BASIC PART #**

**SPECIFY SHELL FINISH:**

◆ **01** 5,08µm TIN/LEAD OVER NICKEL

◆ **80** 5,08µm TIN OVER NICKEL (RoHS)

◆ **15** 0,25µm GOLD OVER NICKEL (RoHS)

**SPECIFY CONTACT FINISH:**

◆ **02** 2,54µm TIN/LEAD OVER NICKEL

◆ **84** 2,54µm TIN OVER NICKEL (RoHS)

◆ **27** 0,76µm GOLD OVER NICKEL (RoHS)

**SELECT CONTACT:**

**#09, #11 or #21 CONTACT (DATA ON PAGES 250 & 251)**

(For alternate contact choices, see group A on page 248)



# Mouser Electronics

Authorized Distributor

Click to View Pricing, Inventory, Delivery & Lifecycle Information:

[Mill-Max:](#)

[0467-0-15-15-21-27-04-0](#) [0461-0-15-15-21-27-04-0](#)