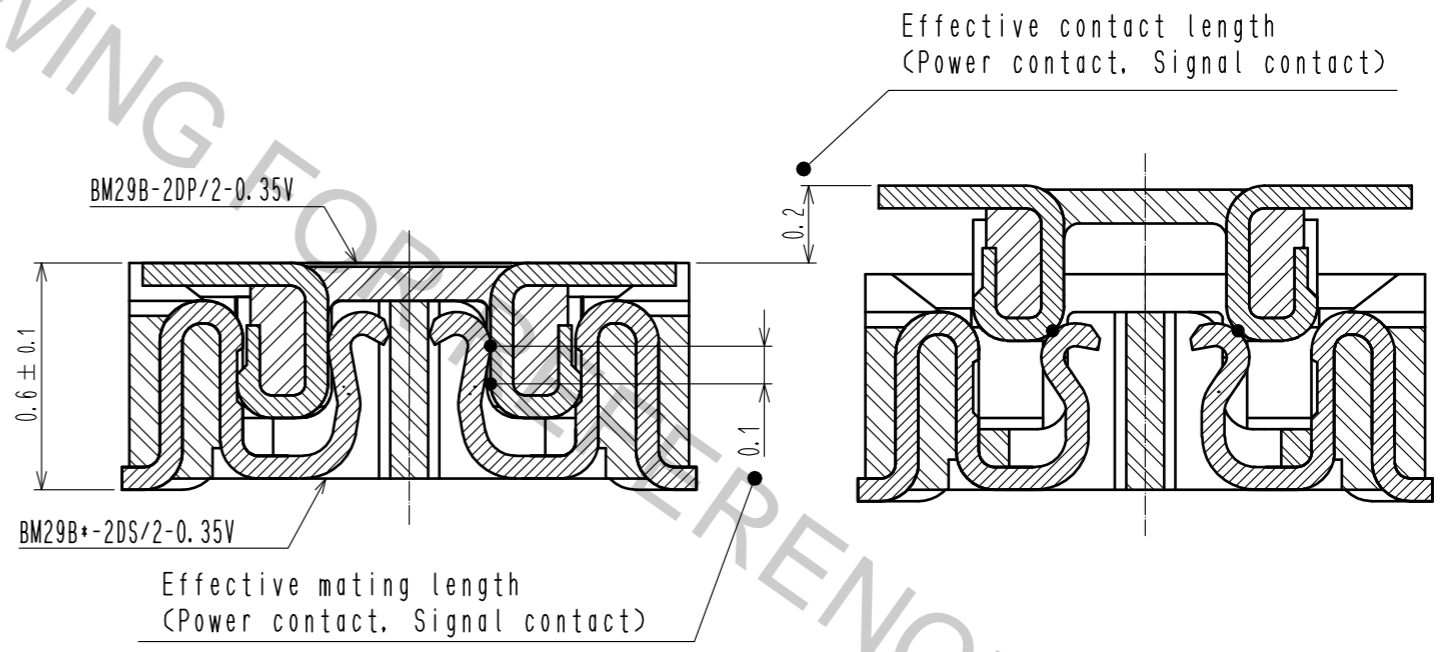
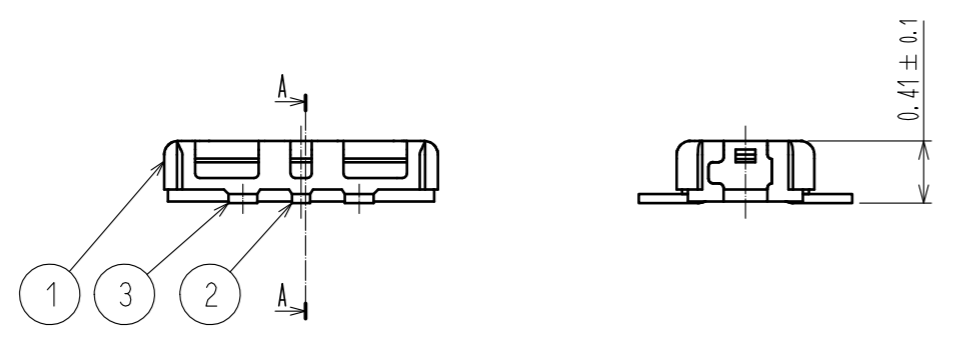
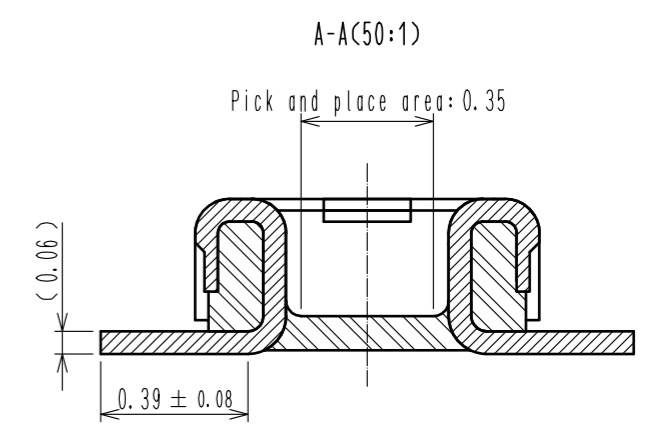
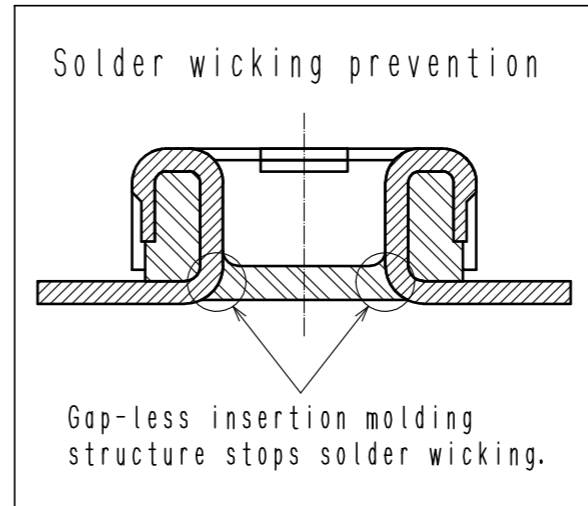
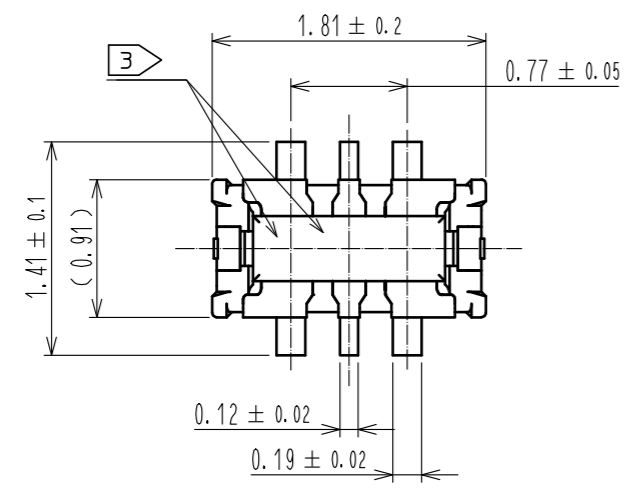


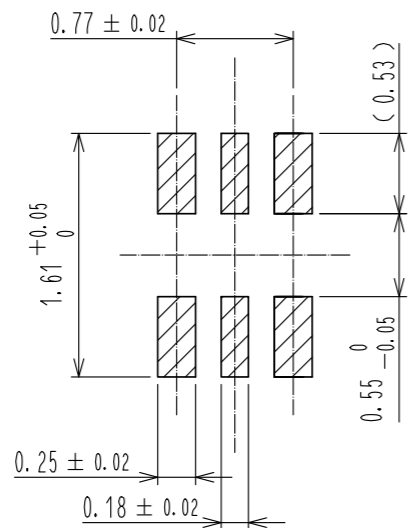
Feb.1.2017 Copyright 2017 HIROSE ELECTRIC CO., LTD. All Rights Reserved.



NOTE 1 . All lead co-planarity shall be 0.08mm MAX.  
 2 . Contact plating specifications  
 Contact area : Gold 0.05 μm MIN  
 SMT lead : Gold 0.05 μm MIN  
 Under plating : Nickel 1 μm MIN  
 ( Surface : Sealing )  
 3 . HRS mark and CAV No. are indicated in approx. position shown.

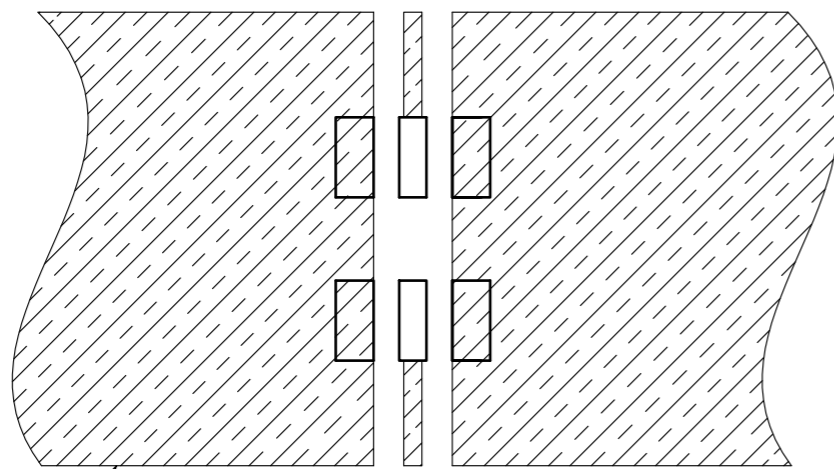
3	PHOSPHOR BRONZE	2	7	PS	CLEAR. REINFORCEMENT COLLAR			
2	PHOSPHOR BRONZE	2	6	PS	BLACK. PLASTIC REEL			
1	LCP	UL94 V-0. BLACK	5	POLYESTER	CLEAR. COVER TAPE			
			4	PS	SMOKE GRAY. EMBOSSED CARRIER TAPE			
NO.	MATERIAL	FINISH . REMARKS	NO.	MATERIAL	FINISH . REMARKS			
UNITS	mm	SCALE	20 : 1	COUNT	DESCRIPTION OF REVISIONS	DESIGNED	CHECKED	DATE
HIROSE ELECTRIC CO., LTD.		APPROVED : MO. ISHIDA	16.01.06	DRAWING NO. EDC-362710-53-01				
		CHECKED : WR. FUKUCHI	16.01.06	PART NO. BM29B-2DP/2-0.35V(53)				
		DESIGNED : TY. YAMASAKI	16.01.06	CODE NO. CL673-7002-0-53				
		DRAWN : KR. AJITO	16.01.06					

◆ Recommended PCB layout

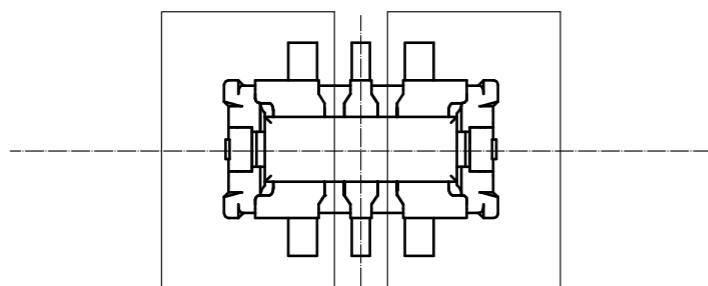


◆ Recommended metal mask dimensions  
Metal mask thickness : 100 μm  
(Open ratio : 100% for PCB layout)

◆ Recommended electrical circuit layout

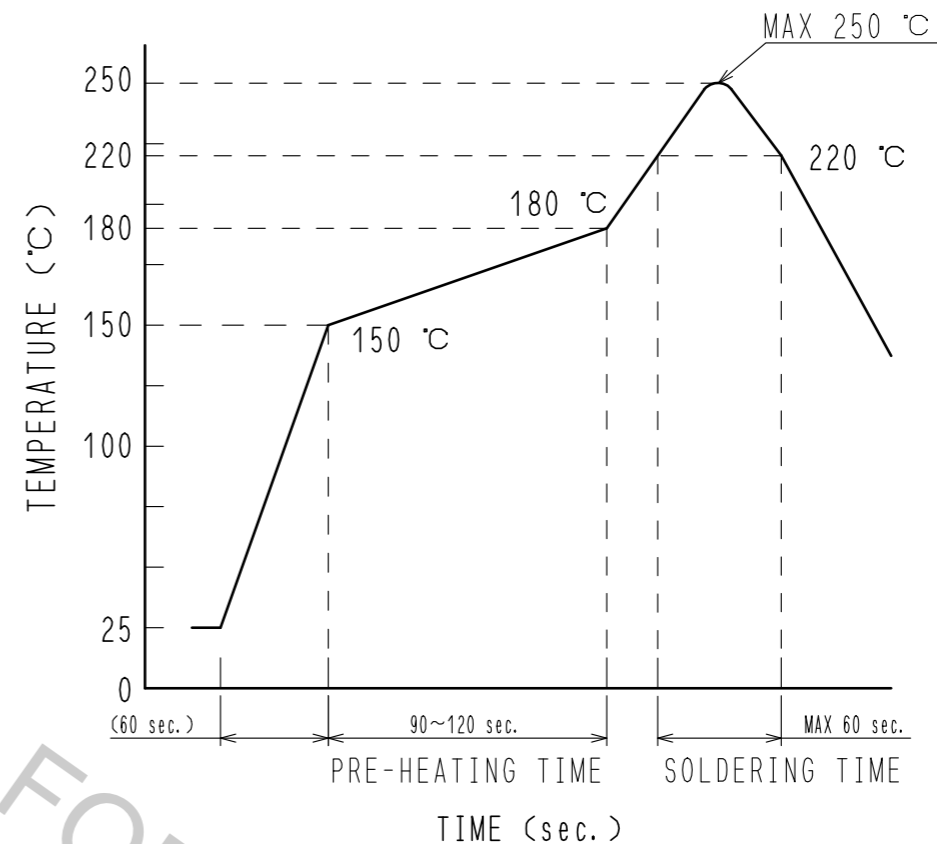


Electrical circuit



Power pin unit

4 Recommended reflow temperature profile using lead-free solder paste.



Reflow method: IR reflow  
Number of reflow cycles: 2 cycles MAX.  
1) Reflow time  
Duration above 220°C: 60 sec MAX.  
(Peak temperature: 250°C MAX)  
2) Pre-heat time  
Pre-heat temperature (MIN): 150°C  
Pre-heat temperature (MAX): 180°C  
Pre-heat time: 90-120 sec.

- 4 The temperatures mentioned above refer to the PCB surface temperature near the connector leads. The temperature profiles are based on the above conditions. In individual applications the actual temperature may vary, depending on solder paste type, volume/thickness and board size/thickness. Consult your solder paste and equipment manufacturer for specific recommendations.
- 5 Please contact us in case you will make different settings from our recommendation.

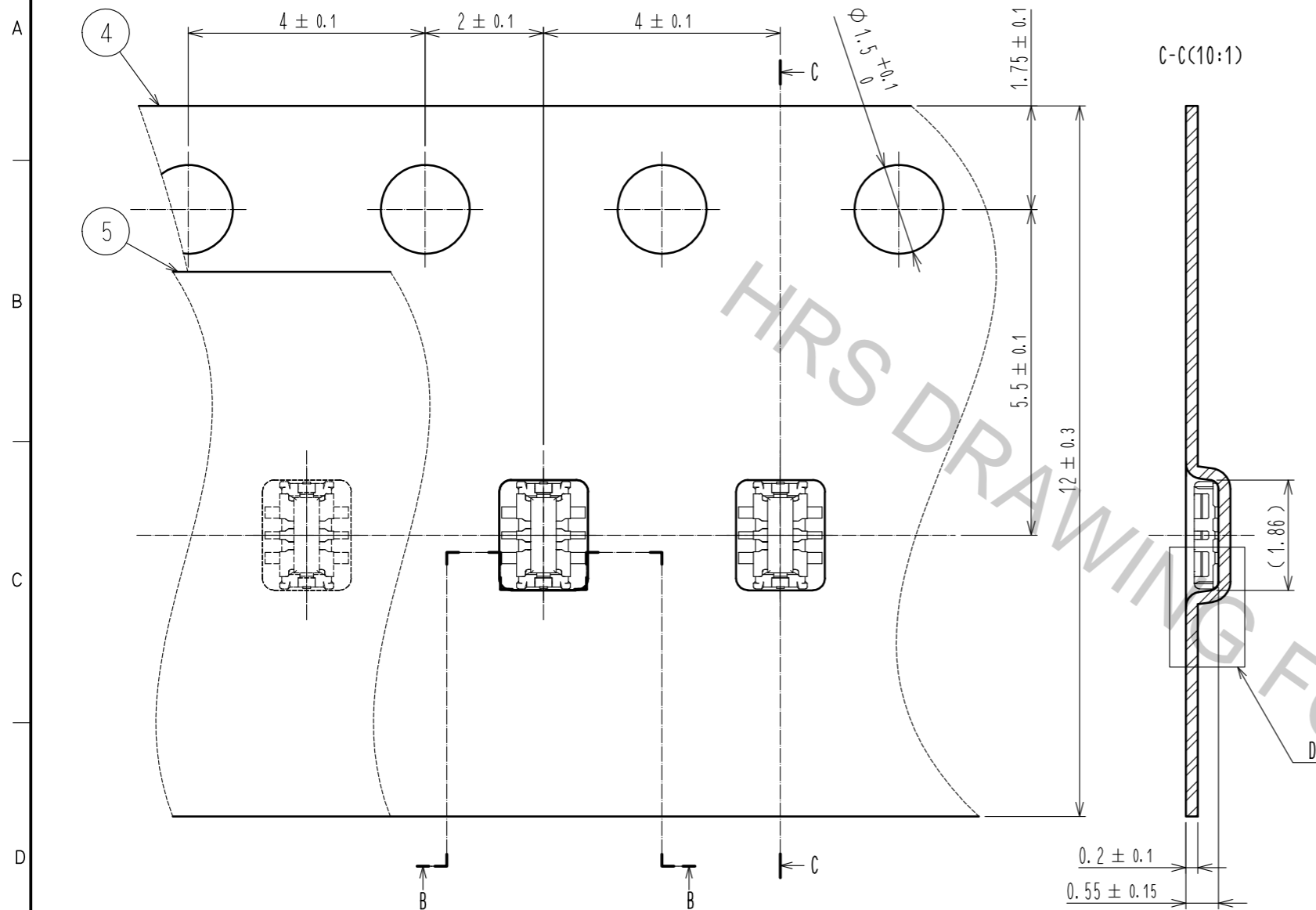
**HRS**

DRAWING NO.	EDC-362710-53-01
PART NO.	BM29B-2DP/2-0.35V(53)
CODE NO.	CL673-7002-0-53

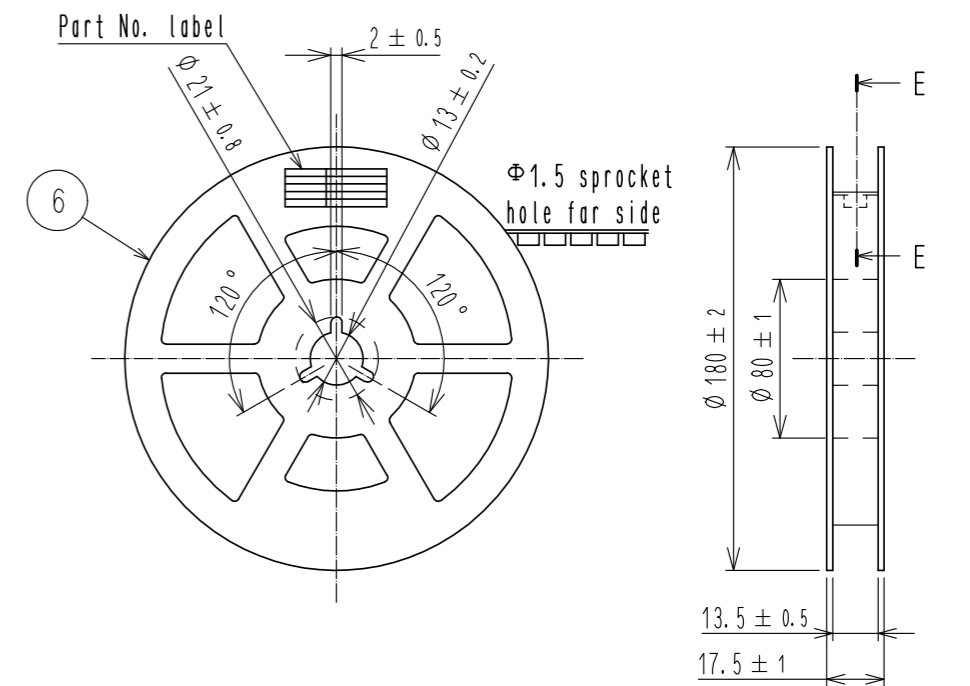
2/3

Feb.1.2017 Copyright 2017 HIROSE ELECTRIC CO., LTD. All Rights Reserved.

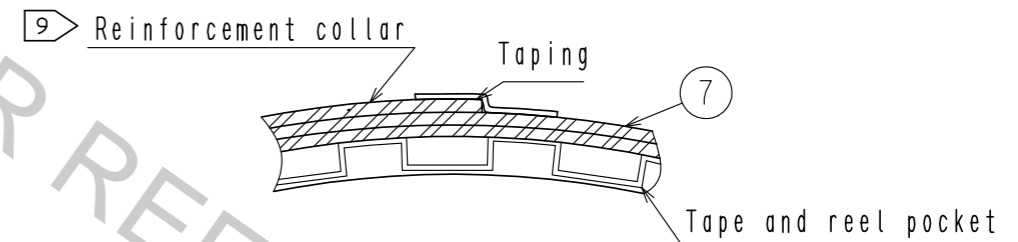
Embossed carrier tape packaging (10:1)



Style and dimension of reel (Free)



E-E (Free)

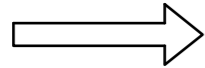


Detail of part No. label

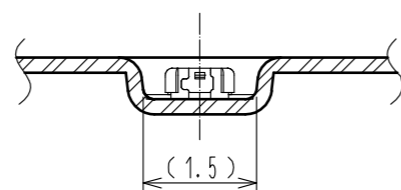
製造年月日	** ** *	Data of manufactured
製品コード	CL0673-7002-0-53	Code No.
製品名	BM29B-2DP/2-0.35V(53)	Part No.
数量	1,000	Quantity
納入者	ヒロセ電機(株)	Supplier

Data of manufactured  
 Code No.  
 Part No.  
 Quantity  
 Supplier

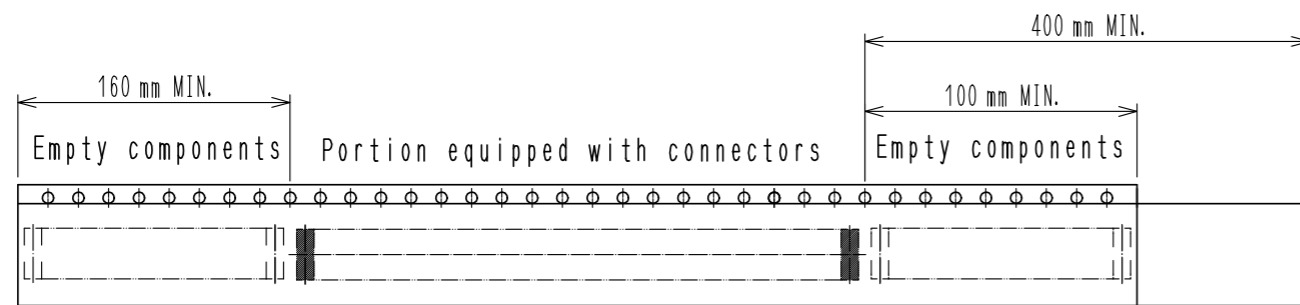
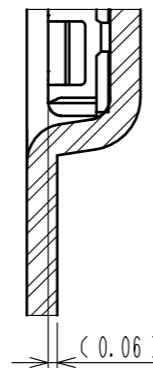
Direction of unreeling



B-B(10:1)



D(20:1)



8 Taping (Free)

- 6 . Per reel 1,000 connectors.
- 7 . The dimensions in parentheses are for reference.
- 8 . Refer to JIS C 0806 and IEC60286-3  
 (Packaging of components for automatic handling)
- 9 . Wrap a reinforcing collar made by polystyrene to the surface of emboss reel at the termination side in order to protect emboss carrier tape, top cover tape.

<b>HRS</b>	DRAWING NO.	EDC-362710-53-01
	PART NO.	BM29B-2DP/2-0.35V(53)
	CODE NO.	CL673-7002-0-53
		$\triangle$ 3/3