

PLEASE CHECK WWW.MOLEX.COM FOR LATEST PART INFORMATION

Part Number: [0438100002](#)
Status: **Active**
Overview: [Mini-Fit® Blind Mate Interface \(BMI\) Connectors](#)
Description: Mini-Fit® BMI Header, Dual Row, Right Angle, for 1.60mm PCB, 6 Circuits, Tin (Sn) Plating, with 260C Wave Solderable Retention Clip

Documents:

3D Model	Product Specification PS-45750-001-001 (PDF)
Drawing (PDF)	Packaging Specification PK-43810-001-000 (PDF)
Product Specification PS-43810-001 (PDF)	RoHS Certificate of Compliance (PDF)

Agency Certification

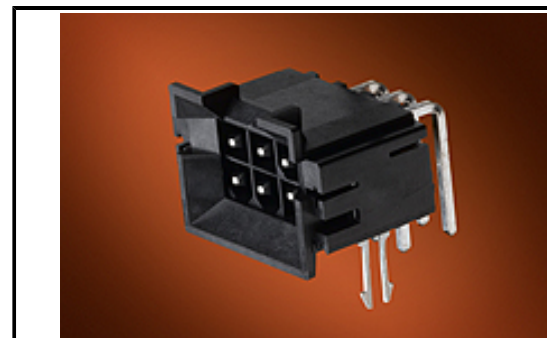
CSA	LR19980
UL	E29179

General

Product Family	PCB Headers
Series	43810
Application	Board-to-Board, Power, Wire-to-Board
Comments	Current = 13A max. per circuit when header is mated to a receptacle loaded with 45750 Mini-Fit® Plus HCS Crimp Terminal Crimped to 16 AWG wire., See Molex product specification PS-45750-001 for additional current de-rating information.
Overview	Mini-Fit® Blind Mate Interface (BMI) Connectors
Product Name	Mini-Fit® BMI
UPC	800754911955

Physical

Breakaway	No
Circuits (Loaded)	6
Circuits (maximum)	6
Color - Resin	Black
Durability (mating cycles max)	30
Flammability	94V-0
Glow-Wire Compliant	No
Material - Metal	Brass
Material - Plating Mating	Tin
Material - Plating Termination	Tin
Material - Resin	High Temperature Thermoplastic
Net Weight	4.366/g
Number of Rows	2
Orientation	Right Angle
PC Tail Length	3.50mm
PCB Locator	Yes
PCB Retention	Yes
PCB Thickness - Recommended	1.60mm
Packaging Type	Tray
Pitch - Mating Interface	4.20mm
Pitch - Termination Interface	4.20mm
Plating min - Mating	2.540µm
Plating min - Termination	2.540µm
Polarized to PCB	Yes
Shrouded	Partial
Stackable	No
Surface Mount Compatible (SMC)	Yes
Temperature Range - Operating	-40°C to +105°C



Series image - Reference only

EU ELV

Not Relevant

EU RoHS

Compliant

REACH SVHC

Not Contained Per - ED/21/2016 (20 June 2016)

Halogen-Free

Status

Not Low-Halogen

Need more information on product environmental compliance?

Email productcompliance@molex.com
Please visit the [Contact Us](#) section for any non-product compliance questions.

China ROHS	Green Image
ELV	Not Relevant
RoHS Phthalates	Not Contained

Search Parts in this Series

[43810](#) Series

Mates With

[42385](#) , [42474](#) , [44475](#) , [44516](#) , [5557](#) Dual Row, [245135](#) Mini-Fit Jr.™ Cable Assembly

Termination Interface: Style Through Hole

Electrical

Current - Maximum per Contact 13.0A
Voltage - Maximum 600V

Solder Process Data

Duration at Max. Process Temperature (seconds) 005
Lead-free Process Capability WAVE
Max. Cycles at Max. Process Temperature 001
Process Temperature max. C 260

Material Info

Reference - Drawing Numbers

Packaging Specification PK-43810-001-000
Product Specification PS-43810-001, PS-45750-001-001
Sales Drawing SD-43810-011

This document was generated on 02/10/2017

PLEASE CHECK WWW.MOLEX.COM FOR LATEST PART INFORMATION