

Number of contacts

Mounting height

9-37  
50



Standard Versions

Stamped solder pins, angled with grounding board locks

Identification	No. of contacts	Part No.	
<b>Performance levels</b> Explanations see page 05.04 Other performance levels on request		Performance level <b>3</b>	
		Performance level <b>2</b>	
<b>Male connector</b> metal shell with dimples		2.84 mm pitch	
	9	09 65 163 781 . 1)	09 65 163 681 . 1)
	15	09 65 263 781 . 1)	09 65 263 681 . 1)
	25	09 65 363 781 . 1)	09 65 363 681 . 1)
	37	09 65 463 781 . 1)	09 65 463 681 . 1)
		2.54 mm pitch	
	9	09 65 162 781 .	09 65 162 681 .
	15	09 65 262 781 .	09 65 262 681 .
	25	09 65 362 781 .	09 65 362 681 .
	37	09 65 462 781 .	09 65 462 681 .
<b>Female connector</b> metal shell		2.84 mm pitch	
	9	09 66 153 761 . 1)	09 66 153 661 . 1)
	15	09 66 253 761 . 1)	09 66 253 661 . 1)
	25	09 66 353 761 . 1)	09 66 353 661 . 1)
	37	09 66 453 761 . 1)	09 66 453 661 . 1)
	50	09 66 553 761 . 1)	09 66 553 661 . 1)
		2.54 mm pitch	
	9	09 66 152 761 .	09 66 152 661 .
	15	09 66 252 761 .	09 66 252 661 .
	25	09 66 352 761 .	09 66 352 661 .
	37	09 66 452 761 .	09 66 452 661 .
	50	09 66 552 761 . 1)	09 66 552 661 . 1)
Please insert digit for flange thread or fitted female screw locks			
Ø 3.1 mm hole ▶ 0 <sup>1)</sup>			
M3 ▶ 1			
4-40 UNC ▶ 2			
fitted screw locks 4-40 UNC ▶ 3			

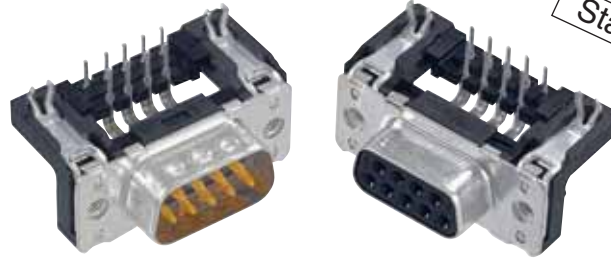
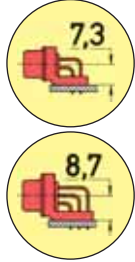
D-Sub

<sup>1)</sup> Not normally kept in stock

Number of contacts

Mounting height

9-37  
50



Stamped solder pins, angled with grounding board locks

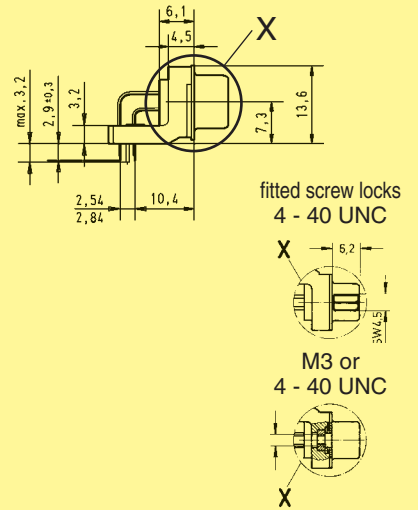
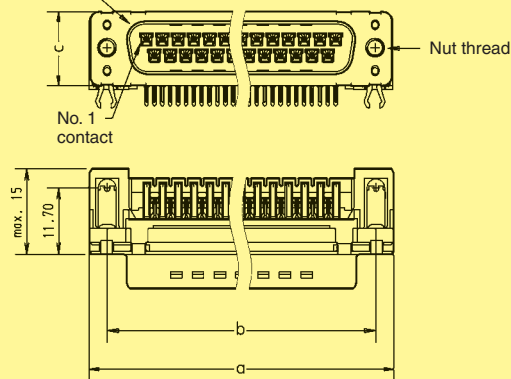
Identification

Drawing

Dimensions in mm

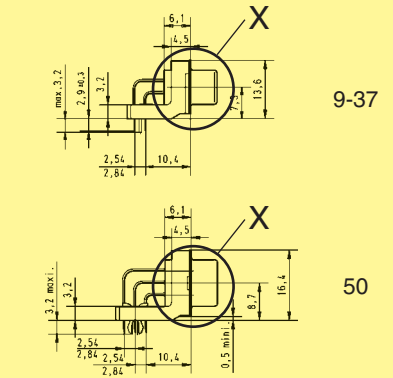
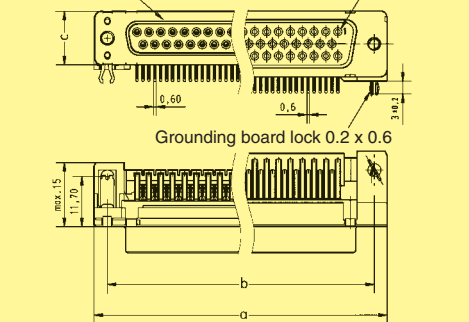
Male connector

Mating face acc. to: DIN 41 652 · CECC 75 301-802  
IEC 60 807

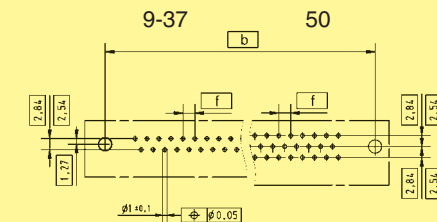


Female connector

Mating face acc. to: DIN 41 652 · CECC 75 301-802  
IEC 60 807



Board drillings



	a	b±0.1	c	f
9	30.90	25.00	12.50	2.74
15	39.20	33.30	12.50	2.74
25	53.10	47.00	12.50	2.76
37	69.40	63.50	12.50	2.76
50	67.00	61.10	15.40	2.76

D-Sub