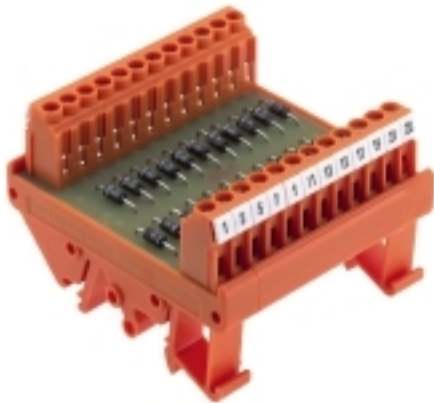


**RSD**  
**RSD A22 LP/LP**

**Weidmüller Interface GmbH & Co. KG**  
Klingenbergstraße 16  
D-32758 Detmold  
Germany  
Fon: +49 5231 14-0  
Fax: +49 5231 14-292083  
www.weidmueller.com



Interfaces with diodes for surge voltage protection, lamp testing or protection against reversed polarity.

**General ordering data**

Type	RSD A22 LP/LP
Order No.	<a href="#">0180961001</a>
Version	Interface, RSD, Common anode, Screw connection
GTIN (EAN)	4032248047413
Qty.	1 pc(s).

## RSD RSD A22 LP/LP

**Weidmüller Interface GmbH & Co. KG**  
 Klingenbergstraße 16  
 D-32758 Detmold  
 Germany  
 Fon: +49 5231 14-0  
 Fax: +49 5231 14-292083  
 www.weidmueller.com

## Technical data

### Dimensions and weights

Length	65 mm	Length (inches)	2.559 inch
Width	70 mm	Width (inches)	2.756 inch
Height	42 mm	Height (inches)	1.654 inch
Net weight	73.48 g		

### Temperatures

Operating temperature	0...55 °C	Storage temperature	-40...60 °C
-----------------------	-----------	---------------------	-------------

### Connection data

Type of component	Diode 1N4007	Configuration	Shared anode
-------------------	--------------	---------------	--------------

### Rating Data

Rated voltage (text)	230 V	Rated current per connection	1 A
Components	Diode	Value	1N4007
Max. recurring peak voltage	1,000 V		

### Insulation coordination (EN50178)

According to	DIN EN 50178	Rated insulation voltage	230 V
Surge voltage category	II	Pollution severity level	2
Pulse voltage test (1,2/50µs)	2 kV	Insulation test voltage	0.35 kVAC

### Connection field

Type of connection	Screw connection	Clamping range, min.	0.13 mm <sup>2</sup>
Clamping range, max.	6 mm <sup>2</sup>	Solid, min. H05(07) V-U	0.5 mm <sup>2</sup>
Solid, max. H05(07) V-U	6 mm <sup>2</sup>	Flexible, min. H05(07) V-K	0.5 mm <sup>2</sup>
Flexible, max. H05(07) V-K	4 mm <sup>2</sup>	Flexible with sleeve, max.	2.5 mm <sup>2</sup>
Flexible with sleeve, min.	0.5 mm <sup>2</sup>	Sleeve with plastic collar, max.	2.5 mm <sup>2</sup>
Min. wire cross-section, AWG	AWG 26	Max. wire cross-section, AWG	AWG 12
Tightening torque, min.	0.5 Nm	Tightening torque, max.	0.6 Nm
Stripping length	6 mm		

### Classifications

ETIM 3.0	EC001419	ETIM 4.0	EC001421
ETIM 5.0	EC001421	ETIM 6.0	EC002780
UNSPSC	30-21-18-01	eClass 5.1	27-24-22-04
eClass 6.2	27-13-08-02	eClass 7.1	27-14-11-52
eClass 8.1	27-14-11-52	eClass 9.0	27-14-11-52
eClass 9.1	27-14-11-52		

### Approvals

Approvals



ROHS Conform

**Data sheet****RSD  
RSD A22 LP/LP**

**Weidmüller Interface GmbH & Co. KG**  
Klingenbergstraße 16  
D-32758 Detmold  
Germany  
Fon: +49 5231 14-0  
Fax: +49 5231 14-292083  
www.weidmueller.com

**Technical data****Downloads**

---

Approval/Certificate/Document of Conformity	<a href="#">CIF113_01_12.pdf</a>
Brochure/Catalogue	<a href="#">CAT 4.5 ELECTR 16/17 EN</a>
Engineering Data	<a href="#">WSCAD</a>

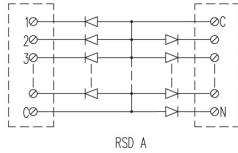
---

**Data sheet**

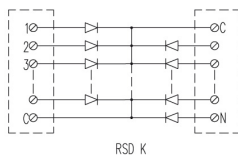
**RSD**  
**RSD A22 LP/LP**

**Weidmüller Interface GmbH & Co. KG**  
Klingenbergstraße 16  
D-32758 Detmold  
Germany  
Fon: +49 5231 14-0  
Fax: +49 5231 14-292083  
www.weidmueller.com

**Drawings**



RSD A



RSD K

**RSD  
RSD A22 LP/LP**

**Weidmüller Interface GmbH & Co. KG**  
 Klingenbergstraße 16  
 D-32758 Detmold  
 Germany  
 Fon: +49 5231 14-0  
 Fax: +49 5231 14-292083  
 www.weidmueller.com

**Accessories**

**TS 35**



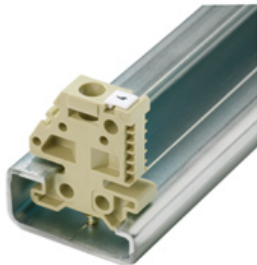
**Building installation wiring**

For building installations, we offer a complete system that revolves around the 10×3 copper rail and comprises perfectly coordinated components: from installation terminal blocks, neutral conductor terminal blocks and distribution terminal blocks to comprehensive accessories such as busbars and busbar holders.

**General ordering data**

Type	Order No.	Version	GTIN (EAN)	Qty.
TS 35X15/2.3 2M/ST/ZN	<a href="#">0498000000</a>	Mounting rail, TS 35, TS 35 x 15, without slot, Steel, galvanized, chromium- plated	4008190042493	2 m
TS 35X7.5 2M/ST/ZN	<a href="#">0383400000</a>	Mounting rail, TS 35, TS 35 x 7.5, without slot, Steel, galvanized, chromium- plated	4008190088026	2 m

**End bracket**



**Klippon® Connect with clamping yoke Technology**

The high reliability and variety of designs of the terminal blocks with clamping yoke connections make planning easier and optimises operational safety. Klippon® Connect provides a proven response to a range of different requirements.

**General ordering data**

Type	Order No.	Version	GTIN (EAN)	Qty.
EWK 2	<a href="#">0199360000</a>	Accessories, End bracket	4008190023546	50 pc(s).
EW 35	<a href="#">0383560000</a>	Accessories, End bracket	4008190181314	50 pc(s).

**Data sheet**

**RSD  
RSD A22 LP/LP**

**Weidmüller Interface GmbH & Co. KG**  
 Klingenbergstraße 16  
 D-32758 Detmold  
 Germany  
 Fon: +49 5231 14-0  
 Fax: +49 5231 14-292083  
 www.weidmueller.com

**Accessories**

**TS 32**



**Building installation wiring**

For building installations, we offer a complete system that revolves around the 10×3 copper rail and comprises perfectly coordinated components: from installation terminal blocks, neutral conductor terminal blocks and distribution terminal blocks to comprehensive accessories such as busbars and busbar holders.

**General ordering data**

Type	Order No.	Version	GTIN (EAN)	Qty.
TS 32X15 2M/ST/ZN	<a href="#">0122800000</a>	Mounting rail, TS 32, without slot, Steel, galvanized, chromium- plated	4008190066307 2 m	