



ENTERPRISE CLASS
CELLULAR ROUTERS FOR
RUGGED APPLICATIONS



DIGI TRANSPORT® WR44 R

All-in-one cellular router with advanced routing/VPN features,
designed specifically for use in rugged environments

The Digi TransPort WR44 R is a rugged, all-in-one 3G/4G mobile communications solution with true enterprise class routing, security and firewall. Featuring a heavy-duty cast aluminum enclosure, it offers a flexible interface design with an optional integrated Wi-Fi access point (with multi SSID), USB, serial and 4-port Ethernet switch, as well as a variety of configuration options including GPS and CAN support.

These routers are ideal for transportation and mobile applications. Flexible power options include 9-36 VDC locking barrel or automotive Molex connectors for direct integration into vehicle applications. Also ideal for mobile applications is the cellular to Wi-Fi autoswitch feature, which

uses the highest speed/lowest cost WAN network available.

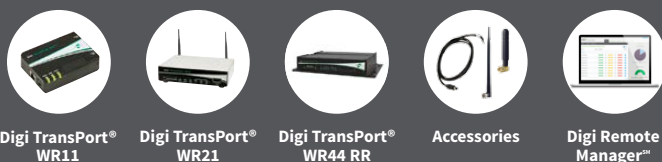
All Digi TransPort products offer an advanced routing, security and firewall feature set including stateful inspection firewall and integrated VPN. Enterprise class protocols incorporate BGP, OSPF and VRRP+. Advanced features allow the Digi TransPort to be used as a component of a PCI compliant network.

Digi's remote management solutions feature easy setup, configuration and maintenance of large installations of Digi TransPort devices.

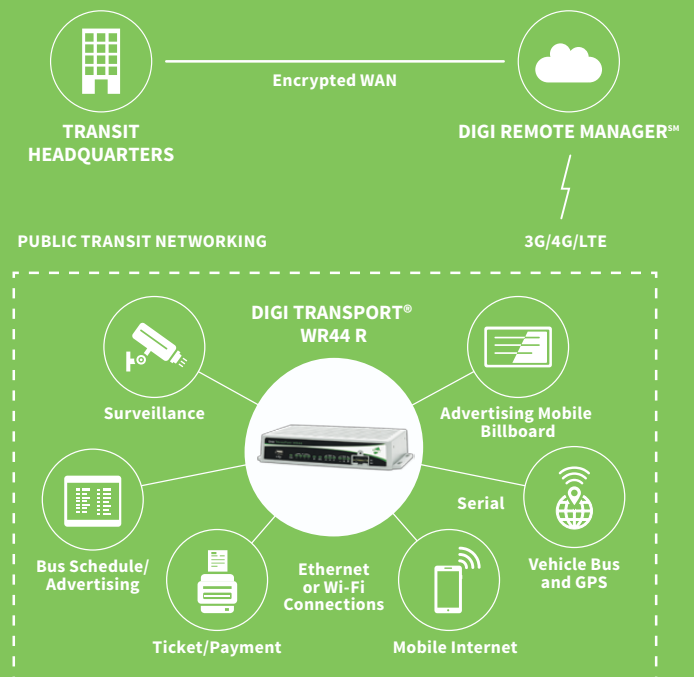
BENEFITS

- Rugged, enterprise-class cellular routers with advanced dynamic routing, security and firewall features
- Heavy-duty cast aluminum enclosure for reliable performance in rugged environments
- Integrated 802.11 b/g/n; a/n Wi-Fi access point (optional) and 4-port Ethernet switch
- Flexible interfaces including GPS and CAN with DC power options
- Cellular to Wi-Fi autoswitch feature automatically uses the highest speed/lowest cost WAN network available
- Digi's remote management solutions include software for easy setup, configuration and maintenance

RELATED PRODUCTS



APPLICATION EXAMPLE



SPECIFICATIONS

Digi TransPort® WR44 R

WIRELESS INTERFACES

WWAN**

LTE - EMEA (L1)	800/850/900/1800/1900/2100/2600 MHz; 3G fall back to 850/900/1900/2100 MHz and 2G fall back to 850/900/1800/1900 MHz; Transfer rate (max): 50 Mbps up, 100 Mbps down
LTE - NORTH AMERICA (L5)	Software defined multi-carrier (Verizon, AT&T, and Sprint) 700/850/1700(AWS)/1900 MHz; 2G/3G GSM fall back to 850/900/1700AWS/1800/1900/2100 MHz; 2G/3G CDMA fall back to 800/1900 MHz; Transfer rate (max): 50 Mbps up, 100 Mbps down, Verizon Private Network, DMNR and PNTM Approved
LTE - NORTH AMERICA (L6)*	700/850/1700(AWS)/1900 MHz; 2G/3G fall back to 850/1900 MHz; Transfer rate (max): 50 Mbps up, 100 Mbps down
LTE - VERIZON (L8)*	700/1700(AWS) MHz; No 2G/3G fall back; Transfer rate (max): 50 Mbps Up, 100 Mbps Down, Verizon Private Network, DMNR and PNTM Approved
HSPA+ (U9)	850/900/1700 (AWS)/1900/2100 MHz; Transfer rate (max): 5.76 Mbps up, 21 Mbps down
GSM-R (R5)*	900/1800/1900 MHz (TRM-5); GPRS Class 10; Transfer rate (max): 42.8 Kbps up, 85.6 Kbps down
CONNECTOR	Ux, Lx variants: 2 x 50 Ω SMA (Center pin: female)
SIM SLOTS	2, Mini-SIM (2FF)
SIM SECURITY	SIM slot cover plate included

WI-FI*

STANDARD	802.11 b/g/n; a/n; Option of dual Wi-Fi modules
MODES	Access point, Client and support for multiple SSID
TRANSMIT POWER	20 dBm + 1.0/-1.5 dBm
RECEIVE SENSITIVITY	54 Mbps / <-72 dBm and 11 Mbps / -90 dBm
SECURITY	Open or shared key authentication; WEP (64- and 128-bit) encryption; WPA/WPA2 with RADIUS (WPA Enterprise and pre-shared keys)
CONNECTORS	2 x 50 Ω RP-SMA (Center pin: male)

GPS*

CHANNELS	50
SENSITIVITY	-163 dB
PROTOCOL	NMEA 0183 V2.3 sentence output; +3.3 VDC active antenna drive; NMEA stream to local serial port or over TCP/IP
NAVIGATION	Galileo ready
AUGMENTATION	SBAS
COLD START	< 27 seconds TTFF (90%)
HORIZONTAL ACCURACY	< 2.5 meters (90%)
VELOCITY ACCURACY	0.1m/s
CONNECTOR	1 x 50 Ω SMA (Center pin: female)
ADDITIONAL FEATURES	Send GPS via UDP/IP, TCP/IP (up to two destinations) or serial; Customize and/or send data using Python; GPS status query; Time source capable

WIRED INTERFACES

SERIAL

PORTS	1
STANDARD	RS-232
DTE/DCE	DCE
SIGNAL SUPPORT	TXD, RXD, RTS, CTS, DTR, DCD, DSR, RI
FLOW CONTROL	Software (XON/XOFF), Hardware supported
COM PORT REDIRECTOR	RealPort®
CONNECTOR	DB-9 female

ETHERNET

PORTS	4
STANDARD/PHYSICAL LAYER	IEEE 802.3; 10/100 Base-T
DATA RATE/MODE/INTERFACE	10/100 Mbit/s; Full or Half duplex; Auto MDI/MDIX
CONNECTOR	RJ-45

* Optional hardware. Lead time and/or minimum order quantity may apply. Contact Digi Sales for details.

** Transfer rates are network operator dependent.

*** Reduced cellular performance above 60° C.

SPECIFICATIONS

Digi TransPort® WR44 R

USB	
PORTS	1
STANDARD	USB 2.0
SIGNALING	Full- or low-speed
CONNECTOR	Type A
OTHER	
EXPANSION CARDS	Optional expansion cards available GPS and fleet
SOFTWARE	
REMOTE MANAGEMENT	Digi Remote Manager SM (cloud based); SNMP v1/v2c/v3 (user installed/managed)
LOCAL MANAGEMENT	Web Interface (HTTP/HTTPS); CLI (Telnet, SSH, SMS, Serial port)
MANAGEMENT/ TROUBLESHOOTING TOOLS	FTP, SFTP, SCP, Protocol Analyzer with PCAP for Wireshark, Event Logging with Syslog and SMTP, NTP/SNTP
PROGRAMMING TOOLS/ ENVIRONMENTS	Python, DIA, Digi ESP™
MEMORY	128 MB NAND Flash/64 MB DDR2 SDRAM
POWER	
INPUT	9 – 36 VDC
CONSUMPTION	15W max, 8.5W typical
CONNECTOR	Locking barrel and 4-pin terminal block (2 pins are used for power; the other 2 pins are used for I/O).
DC POWER CORD*	Locking barrel to bare wire or 4-pin connector to bare wire
DC POWER SUPPLY*	100-240 VAC 50/60 Hz; Option of standard temperature or extended temperature
POWER	
DIMENSIONS (L X W X H)	5.5 in x 10 in x 1.9 in (140 mm x 254 mm x 48 mm)
WEIGHT	2.4 lbs (1.1 kg)
STATUS LEDS	Power, LAN, Wi-Fi, Serial, WWAN (Link, Act, SIM), Signal strength
MATERIAL	Aluminium Alloy
MOUNTING	4x mounting slots on the unit's flange
ENVIRONMENTAL	
OPERATING TEMPERATURE ***	Non-Wi-Fi variants: -40° C to +70° C; Single-Wi-Fi variants: -20° C to +70° C; Dual-Wi-Fi variants: -20° C to +60° C
STORAGE TEMPERATURE	-40° C to +85° C
RELATIVE HUMIDITY	0% to 95% (non-condensing) @ 25° C
ETHERNET ISOLATION	1.5 kV RMS
SERIAL PORT PROTECTION (ESD)	15 kV
APPROVALS	
GSM/UMTS	PTCRB, NAPRD.03, GCF-CC, R&TTE, EN 301 511
CDMA/EV-DO	CDG TIA/EIA-690, CDG TIA/EIA-98-E
CELLULAR CARRIERS	Certified by most major carriers.
SAFETY	UL 60950, CSA 22.2 No. 60950, EN60950
EMISSIONS/IMMUNITY	CE, FCC Part 15 Class B, AS/NZS CISPR 22, EN55024, EN55022 Class B
INDUSTRY	EN 300 019-2-5 (Specification for environmental tests for ground vehicle installations - covers temperature, humidity, vibration and shock)
WARRANTY	
PRODUCT WARRANTY	3 years

* Optional hardware. Lead time and/or minimum order quantity may apply. Contact Digi Sales for details.




** Transfer rates are network operator dependent.

*** Reduced cellular performance above 60° C.

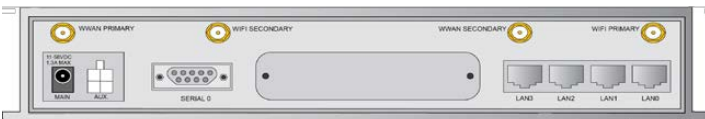
****The enclosure rating is self-declared and has not been formally verified by an independent lab.

ENTERPRISE SOFTWARE	DESCRIPTION
PROTOCOLS	HTTP, HTTPS, FTP, SFTP, SSL, SMTP, SNMP (v1/v2c/v3), SSH, Telnet and CLI for web management; remote management via Digi Remote Manager; SMS management, protocol analyzer, ability to capture PCAP for use with Wireshark; DynDNS; Dynamic DNS client compatible with BIND9/No-IP/DynDNS
SECURITY/VPN	Stateful inspection firewall with scripting, address and port translation; VPN: IPSec with IKEv1, IKEv2, NAT Traversal; SSL, SSLv2, FIPS 197, Open VPN client and server; PPTP, L2TP; VPN Tunnels: 5 included. Additional available: WR21 (5 max.), WR41 (50 max.), WR44/WR44R/WR44RR (200 max.); Cryptology: SHA-1, MD5, RSA; Encryption: DES, 3DES and AES up to 256-bit; Authentication: RADIUS, TACACS+, SCEP for X.509 certificates; Content Filtering (via 3rd party); MAC Address Filtering; VLAN support; Ethernet Port Isolation
ROUTING/FAILOVER	IP pass-through; NAT, NATP with IP Port Forwarding; Ethernet Bridging; GRE; Multicast Routing; Routing Protocols: PPP, PPPoE, RIP (v1, v2) OSPF, SRI, BGP, iGMP routing (multicast); RSTP (Rapid Spanning Tree Protocol); IP Failover: VRRP, VRRP+TM; Automatic failover/fail-back to second GSM network/Standby APN
OTHER PROTOCOLS	DHCP; Dynamic DNS client compatible with BIND9/No-IP/DynDNS; QoS via TOS/DSCP/WRED
SPECIALTY/LEGACY PROTOCOLS	RealPort®; Modbus UDP/TCP to serial; X.25 including XOT, SNA/IP, TPAD and PAD; Protocol switch*

SPECIFICATIONS Connector | Specification

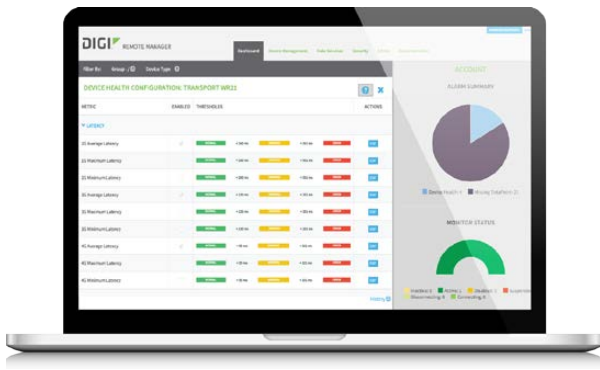
		
GPS (G1)	 <p>1x SMA</p>	Fully-integrated GPS tracking. See main specifications area for details.
FLEET (F1)	 <p>1 x 4-pin, 1 x 15-pin, 1 x SMA</p>	Flexible transportation/fleet focused applications requiring CAN bus, J1708, GPS, Non-isolated digital I/O, Ignition Sense, 3-Axis accelerometer, and power control of Digi TransPort interfaces. Fully programmable via Python for embedded Digi TransPort applications.

PRODUCT IMAGES



* Optional hardware. Lead time and/or minimum order quantity may apply. Contact Digi Sales for details.

DIGI REMOTE MANAGERSM



CAPABILITIES

- Centralized management of remote devices over 3G/4G LTE
- Define standard configurations and automatically monitor individual devices for PCI security compliance
- Report and alert on performance statistics, including connection history, signal quality, latency, data usage and packet loss
- No servers or applications to operate and maintain
- Complete tasks for your entire device network in minutes
- Edit configurations and update firmware for your individual devices or groups
- Monitor the status and location of your remote device via a web browser
- Active or deactivate cellular lines and monitor data to ensure you never incur overage charges

INFRASTRUCTURE

- Hosted in multiple commercial-grade SAS 70 certified facilities in North America and Europe
- Superior availability, operating to 99.9% or greater
- Open APIs available to support application development

SECURITY

- Certified SSAE-16 and ISO27001 facilities
- Member of the Cloud Security Alliance
- Over 175 Security Controls in place to protect your data
- Enables compliance with security frameworks like PCI, HIPAA, NIST and more
- Earned SkyHigh's Cloud Trust Program highest ranking of Enterprise-Ready

PART NUMBERS	DESCRIPTION
WR44-U9G1-NE1-RF	Digi TransPort WR44 R - Cellular (HSPA+ Global), Wi-Fi, GPS, Antennas not Included (International)
WR44-L5G1-NE1-RF	Digi TransPort WR44 R - Cellular (4G LTE Multi-Carrier Software Defined, North America), Wi-Fi, GPS, Antennas not Included
WR44-L1G1-NE1-RF	Digi TransPort WR44 R - Cellular (4G LTE International), Wi-Fi, GPS, Antennas not Included (International)
WR44-L100-TE1-RF	Digi TransPort WR44 R - Cellular (4G LTE International), Dual Wi-Fi, Antennas not Included (International)
WR44-L1F1-CE1-RF	Digi TransPort WR44 R - Cellular (4G LTE International), No Wi-Fi, GPS, CAN, Antennas not Included (International)
WR44-L100-CE1-RF	Digi TransPort WR44 R - Cellular (4G LTE International), No Wi-Fi, Antennas not Included (International)
WR44-L100-NE1-RF	Digi TransPort WR44 R - Cellular (4G LTE International), Wi-Fi, Antennas not Included (International)
WR44-L1F1-NE1-RF	Digi TransPort WR44 R - Cellular (4G LTE International), Wi-Fi, GPS, CAN, Antennas not Included (International)
WR44-L1F1-TE1-RF	Digi TransPort WR44 R - Cellular (4G LTE International), Dual Wi-Fi, GPS, CAN, Antennas not Included (International)
WR44-L1G1-CE1-RF	Digi TransPort WR44 R - Cellular (4G LTE International), No Wi-Fi, GPS, Antennas not Included (International)
WR44-L1G1-TE1-RF	Digi TransPort WR44 R - Cellular (4G LTE International), Dual Wi-Fi, GPS, Antennas not Included (International)
WR44-L500-NE1-RF	Digi TransPort WR44 R - Cellular (4G LTE Multi-Carrier Software Defined, North America), Wi-Fi, Antennas not Included
WR44-L500-CE1-RF	Digi TransPort WR44 R - Cellular (4G LTE Multi-Carrier Software Defined, North America), No Wi-Fi, Antennas not Included
WR44-L500-TE1-RF	Digi TransPort WR44 R - Cellular (4G LTE Multi-Carrier Software Defined, North America), Dual Wi-Fi, Antennas not Included
WR44-L5F1-CE1-RF	Digi TransPort WR44 R - Cellular (4G LTE Multi-Carrier Software Defined, North America), No Wi-Fi, GPS, CAN, Antennas not Included
WR44-L5F1-NE1-RF	Digi TransPort WR44 R - Cellular (4G LTE Multi-Carrier Software Defined, North America), Wi-Fi, GPS, CAN, Antennas not Included
WR44-L5F1-TE1-RF	Digi TransPort WR44 R - Cellular (4G LTE Multi-Carrier Software Defined, North America), Dual Wi-Fi, GPS, CAN, Antennas not Included
WR44-L5G1-CE1-RF	Digi TransPort WR44 R - Cellular (4G LTE Multi-Carrier Software Defined, North America), No Wi-Fi, GPS, Antennas not Included
WR44-L5G1-TE1-RF	Digi TransPort WR44 R - Cellular (4G LTE Multi-Carrier Software Defined, North America), Dual Wi-Fi, GPS, Antennas not Included
WR44-U900-CE1-RF	Digi TransPort WR44 R - Cellular (HSPA+ Global), No Wi-Fi, Antennas not Included (International)
WR44-U900-NE1-RF	Digi TransPort WR44 R - Cellular (HSPA+ Global), Wi-Fi, Antennas not Included (International)
WR44-U900-TE1-RF	Digi TransPort WR44 R - Cellular (HSPA+ Global), Dual Wi-Fi, Antennas not Included (International)
WR44-U9F1-CE1-RF	Digi TransPort WR44 R - Cellular (HSPA+ Global), No Wi-Fi, GPS, CAN, Antennas not Included (International)
WR44-U9G1-CE1-RF	Digi TransPort WR44 R - Cellular (HSPA+ Global), No Wi-Fi, GPS, Antennas not Included (International)
WR44-U9F1-TE1-RF	Digi TransPort WR44 R - Cellular (HSPA+ Global), Dual Wi-Fi, GPS, CAN, Antennas not Included (International)
WR44-U9G1-TE1-RF	Digi TransPort WR44 R - Cellular (HSPA+ Global), Dual Wi-Fi, GPS, Antennas not Included (International)
WR44-U9F1-NE1-RF	Digi TransPort WR44 R - Cellular (HSPA+ Global), Wi-Fi, GPS, CAN, Antennas not Included (International)

DIGI SERVICE AND SUPPORT / You can purchase with confidence knowing that Digi is always available to serve you with expert technical support and our industry leading warranty. For detailed information visit www.digi.com/support.

© 1996-2016 Digi International Inc. All rights reserved.
All trademarks are the property of their respective owners.

91001643
D5/616

DIGI INTERNATIONAL WORLDWIDE HQ
877-912-3444 / 952-912-3444 / www.digi.com

DIGI INTERNATIONAL FRANCE
+33-1-55-61-98-98 / www.digi.fr

DIGI INTERNATIONAL JAPAN
+81-3-5428-0261 / www.digi-intl.co.jp

DIGI INTERNATIONAL SINGAPORE
+65-6213-5380

DIGI INTERNATIONAL CHINA
+86-21-50492199 / www.digi.com.cn

