

Customer Information Sheet

DRAWING No.: S7251-45R

IF IN DOUBT - ASK

(C)

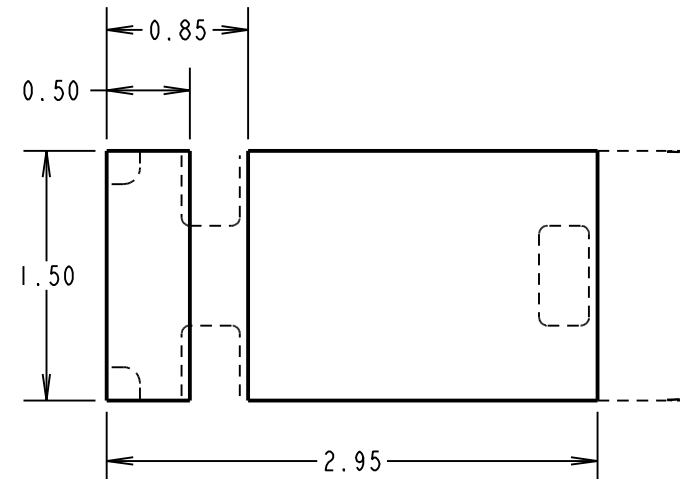
NOT TO SCALE

THIRD ANGLE PROJECTION

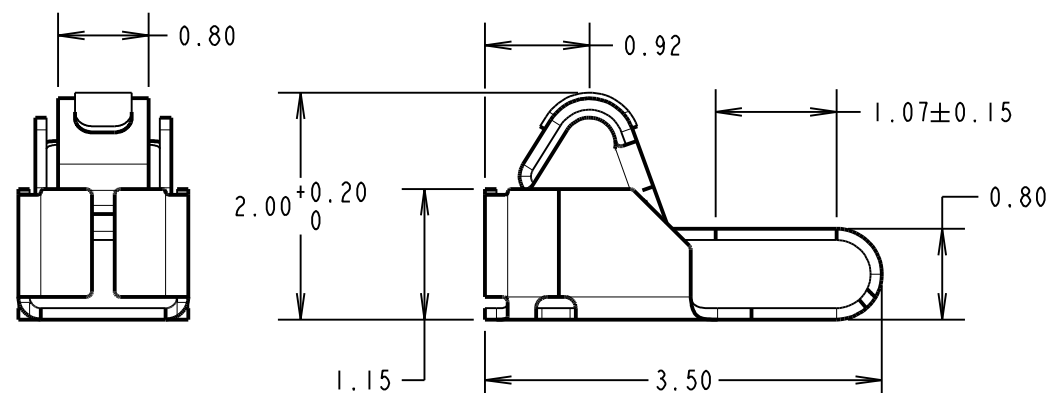
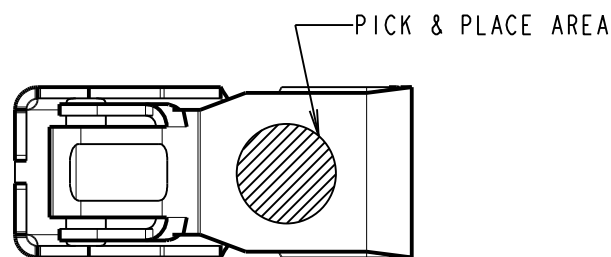
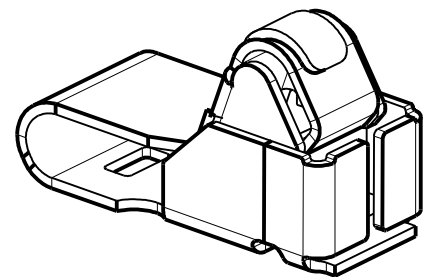
ALL DIMENSIONS IN mm

NOTES:

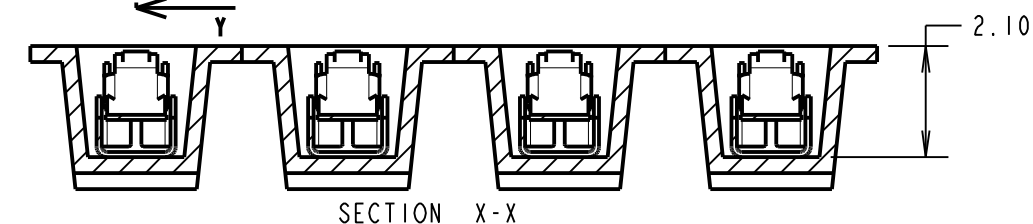
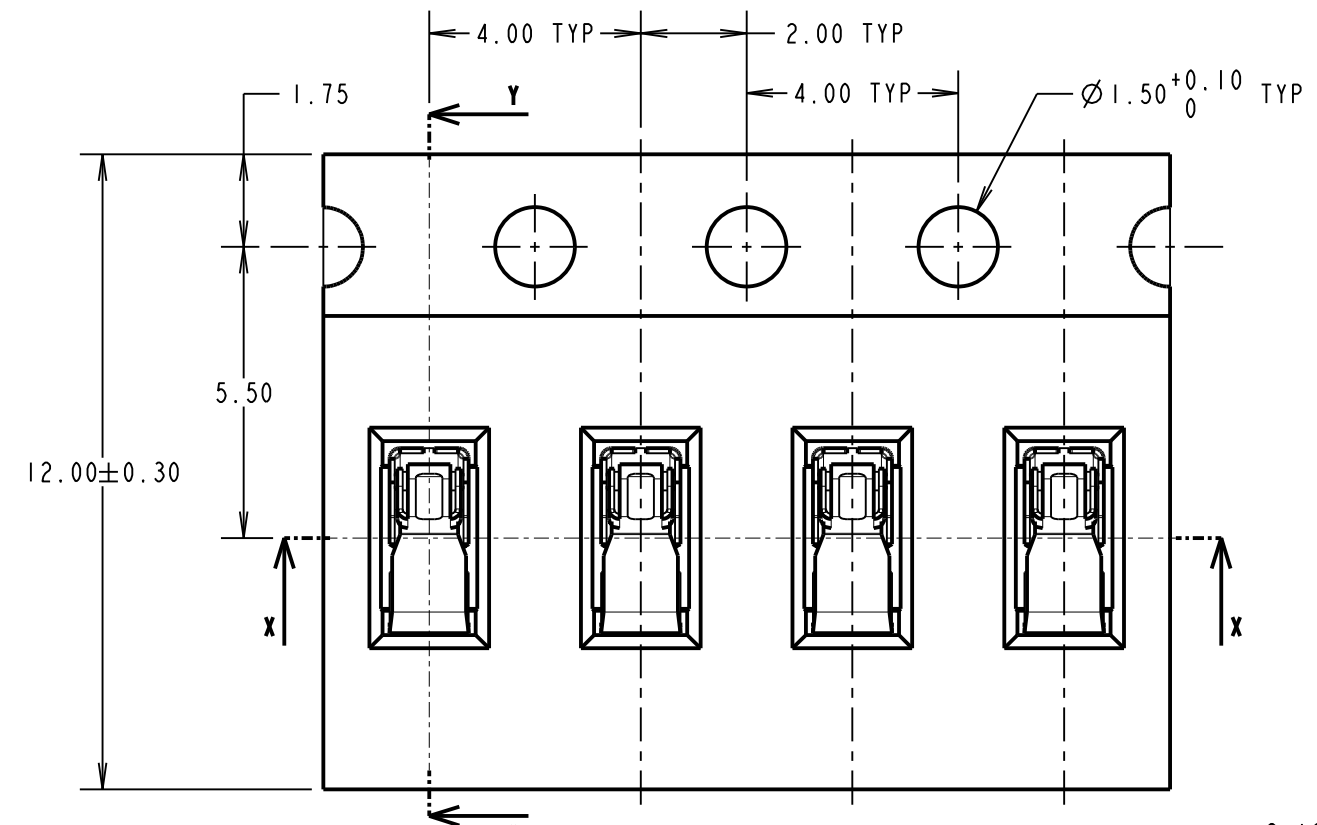
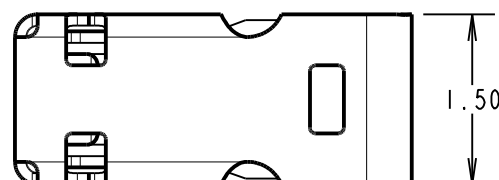
1. QUANTITY PER REEL = 7,000.
2. THIS PRODUCT IS TAPED AND REELED IN GENERAL ACCORDANCE WITH EIA-481-2 (ELECTRONICS INDUSTRIES ASSOCIATION).



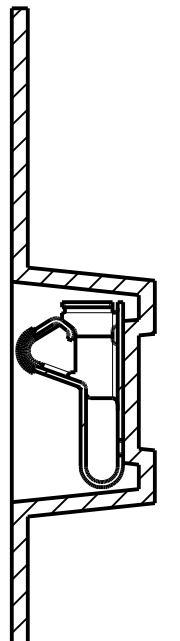
RECOMMENDED PCB LAYOUT
(TOLERANCE = ± 0.05)



COMPONENT DETAILS



SECTION X-X



SECTION Y-Y

SPECIFICATION:

MATERIAL = TITANIUM COPPER ALLOY, 0.08mm THICK
FINISH = 1.5 μ -3.5 μ NICKEL ALL OVER. 0.1 μ GOLD ON TOP
CONTACT AREA AND GOLD FLASH ON BASE

ELECTRICAL:

CONTACT RESISTANCE = 50m Ω MAX

CURRENT RATING = 1A

VOLTAGE RATING = 250V AC

MECHANICAL:

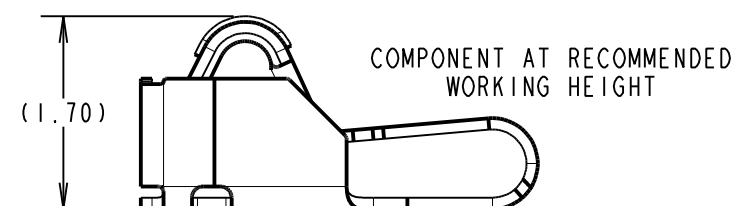
DURABILITY = 10,000 CYCLES

RECOMMENDED WORKING HEIGHT = 1.70mm / MIN FORCE = 0.39N

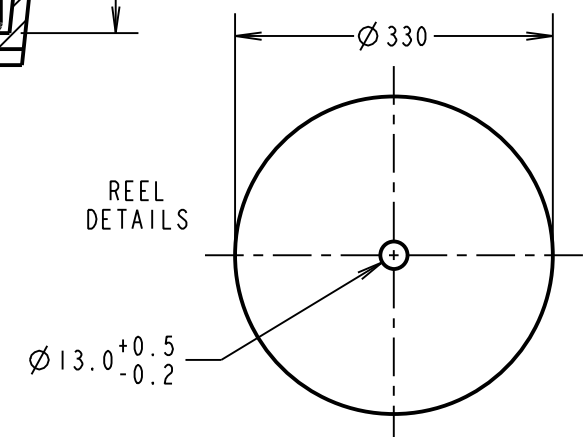
RECOMMENDED MINIMUM WORKING HEIGHT = 1.40mm

ENVIRONMENTAL:

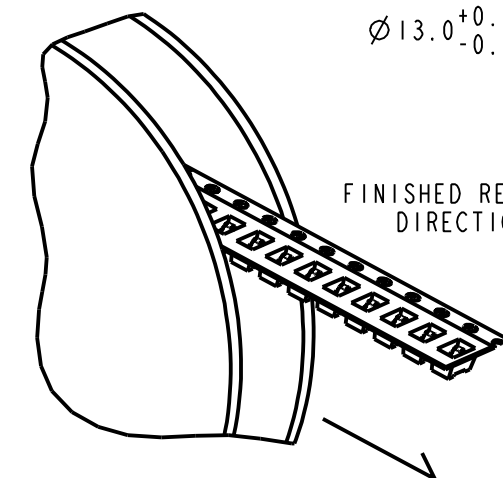
OPERATING TEMPERATURE = -40°C TO +85°C



COMPONENT AT RECOMMENDED
WORKING HEIGHT



REEL
DETAILS



FINISHED REELING
DIRECTION

MSP	2	30.11.15	13179
NAME	ISS.	DATE	C/NOTE
APPROVED: M.PERREN			
CHECKED: S.BENNETT			
DRAWN: S.BENNETT			
CUSTOMER REF.:			
ASSEMBLY DRG:			

HARWIN

www.harwin.com
technical@harwin.com

THIS DRAWING AND ANY
INFORMATION OR DESCRIPTIVE
MATTER SET OUT HEREON ARE
CONFIDENTIAL AND COPYRIGHT
PROPERTY OF THE HARWIN
GROUP AND MUST NOT BE
DISCLOSED, LOANED, COPIED
OR USED FOR MANUFACTURING,
TENDERING OR FOR ANY
OTHER PURPOSE WITHOUT
THEIR WRITTEN PERMISSION.

TOLERANCES
X. = ± 1 mm
X.X = ± 0.50 mm
X.XX = ± 0.10 mm
X.XXX = ± 0.01 mm
ANGLES = $\pm 5^\circ$
UNLESS STATED

MATERIAL:

SEE ABOVE

FINISH: SEE ABOVE

S/AREA: mm²

TITLE: SMT SPRING CONTACT
(1.50mm HIGH)
IN TAPE AND REEL

DRAWING NUMBER:

S7271-45R

SHT
2 OF 2

Mouser Electronics

Authorized Distributor

Click to View Pricing, Inventory, Delivery & Lifecycle Information:

Harwin:

S7271-45R