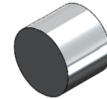
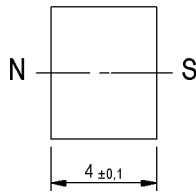
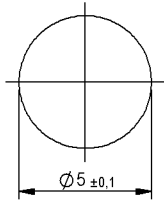


Dimensions mm[inch]
 tolerances acc. to DIN ISO 2768-m
 Toleranzen gem. DIN ISO 2768-m

Isometric
 Scale 2:1
 Maßstab 2:1



Mag. values DIN IEC 60404-8-	Conditions	Min	Typ	Max	Unit
Magnet Material		Samarium Cobalt			
Remanent Induction Br		900	925		mT
Revers. temp. coeff. of Br				-0,042	%/K
Coercivity HcB		680	710		kA/m
Intrinsic Coercivity HcJ		1.750	2.000		kA/m
Max. operating temperature				250	°C
Magnetic moment	inclusive of 5% tolerance	6,8	7,1	7,3	E-6 Vs*cm
Direction of Magnetization		axial			
Density			8,3		g/cu cm

General data	Conditions	Min	Typ	Max	Unit
Remarks		all details acc. to supplier informations.			

Mouser Electronics

Authorized Distributor

Click to View Pricing, Inventory, Delivery & Lifecycle Information:

[Standex Electronics:](#)

[SMCO5 5X4MM](#)