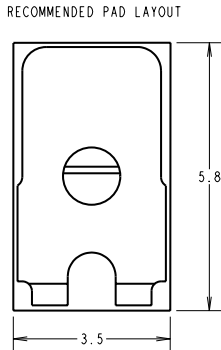
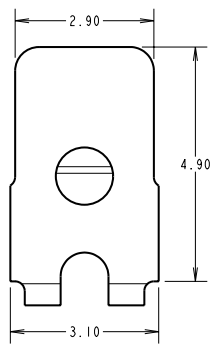
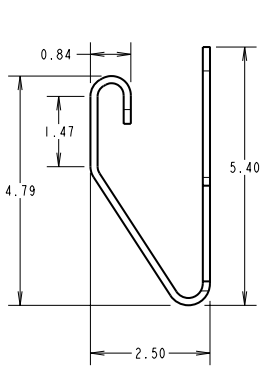
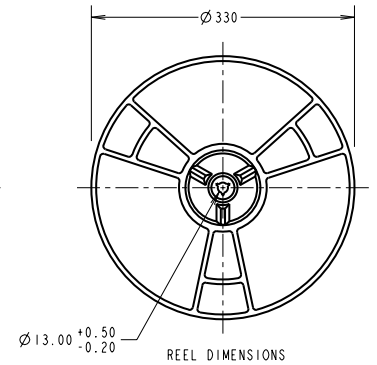
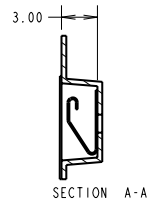
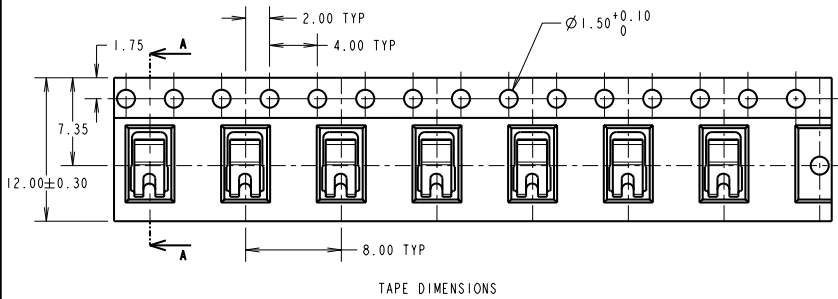


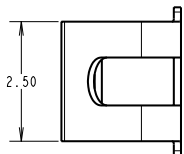
Customer Information Sheet

DRAWING No.: S1741-46R SHEET 2 OF 2 IF IN DOUBT - ASK (C) NOT TO SCALE THIRD ANGLE PROJECTION ALL DIMENSIONS IN mm

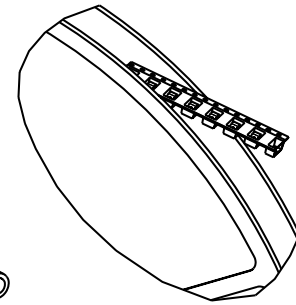


SINGLE COMPONENT DIMENSIONS

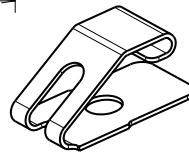
COMPONENT SPECIFICATION:
 MATERIAL = PHOSPHOR BRONZE
 FINISH = 4μ BRIGHT 100% TIN OVER 2μ NICKEL
 RECOMMENDED WORKING HEIGHT = 1.75mm / MIN FORCE = 1.5N
 MINIMUM WORKING HEIGHT = 150mm / MAX FORCE = 3.0N
 MAXIMUM PERMANENT SET = 0.25mm



NOTES:
 1. QUANTITY PER REEL = 2500.
 2. THIS PRODUCT IS TAPED AND REELED IN ACCORDANCE WITH EIA-481-B (ELECTRONIC INDUSTRIES ASSOCIATION).



REELING DIRECTION



CP	B	03.03.10	10687
NAME	ISS.	DATE	C/NOTE
APPROVED: C. PENROSE			
CHECKED: R. ADDE			
DRAWN: N. CODLING			
CUSTOMER REF.:			
ASSEMBLY DRG:			

HARWIN			THIS DRAWING AND ANY INFORMATION OR DESCRIPTIVE MATTER SET OUT HEREON ARE CONFIDENTIAL AND COPYRIGHT PROPERTY OF THE HARWIN GROUP AND MUST NOT BE DISCLOSED, LOANED, COPIED OR USED FOR MANUFACTURING, TENDERING OR FOR ANY OTHER PURPOSE WITHOUT THEIR WRITTEN PERMISSION.	TOLERANCES X. = ±1mm X.X = ±0.25mm X.XX = ±0.10mm X.XXX = ±0.01mm ANGLES = ±5° UNLESS STATED	MATERIAL: SEE ABOVE	TITLE: S174-46 SURFACE MOUNT CONTACT IN TAPE AND REEL	DRAWING NUMBER: S1741-46R	SHT 2 OF 2
HARWIN USA TEL: 603 893 5376 FAX: 603 893 5396 mis@harwin.com	HARWIN Europe (UK) TEL: 023 9231 4545 FAX: 023 9231 4590 mis@harwin.co.uk	HARWIN Asia TEL: +65 6 779 4909 FAX: +65 6 779 3868 mis@harwin.com.sg						