

### 1A VOLTAGE REGULATOR (Operating Voltage up to 16V)

NO.EA-183-161011

#### OUTLINE

The R1190x series are a low supply current voltage regulator with high output voltage accuracy. The maximum operating voltage is 16V and the output current is 1A. Each of these ICs consists of a voltage reference unit, an error amplifier, a resistor-net for voltage setting, as a short current protection, a peak current protection, a thermal shutdown, an inrush current limit and a chip enable circuit. The wide input voltage range (Max. 16V). Additionally, the output voltage is fixed internally, in the range from 2.0V to 12.0V by the 0.1V steps. The supply current of R1190x series is excellent (Typ. 150 $\mu$ A) moreover R1190x series has the standby mode (Typ. 0.1 $\mu$ A) by the chip enable function.

Since the package for these ICs are TO-252-5-P2, SOT-89-5 and HSOP-6J with high power dissipation, high density mounting of the ICs on boards is possible.

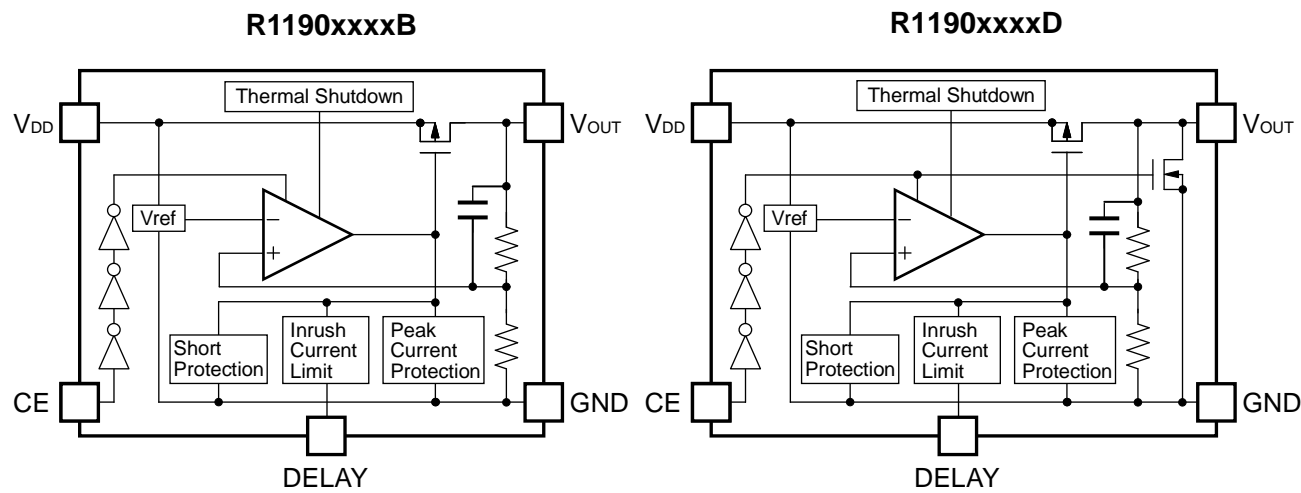
#### FEATURES

- Input Voltage Range ..... 3.5V to 16V
- Supply Current ..... Typ. 150 $\mu$ A
- Standby Current ..... Typ. 0.1 $\mu$ A
- Output Voltage Range ..... 2.0V to 12.0V (0.1V steps)  
(For other voltages, please refer to MARK INFORMATION.)
- Output Voltage Accuracy .....  $\pm 1.5\%$
- Temperature-Drift Coefficient of Output Voltage ... Typ.  $\pm 100$ ppm/ $^{\circ}$ C
- Dropout Voltage ..... Typ. 1.1V ( $I_{OUT}=1A$ ,  $V_{OUT}=5V$ )
- Output Current ..... Min. 1A ( $3.3V \leq V_{OUT} \leq 12.0V$ )
- Line Regulation ..... Typ. 0.02%/V
- Packages ..... SOT-89-5, HSOP-6J, TO-252-5-P2
- Built-in Fold Back Protection Circuit ..... Typ. 300mA (Current at short mode)
- Built-in Thermal Shutdown Circuit
- Built-in Inrush Current Limit Circuit ..... The Delay Pin for setting Inrush Current Limit Time

#### APPLICATIONS

- Power source for digital home appliances.
- Power source for audio visual equipments.

BLOCK DIAGRAMS



SELECTION GUIDE

The output voltage, auto discharge function, package for the ICs can be selected at the user’s request.

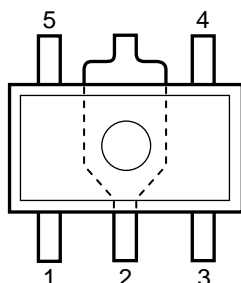
Product Name	Package	Quantity per Reel	Pb Free	Halogen Free
R1190Hxxx*-T1-FE	SOT-89-5	1,000 pcs	Yes	Yes
R1190Sxxx*-E2-FE	HSOP-6J	1,000 pcs	Yes	Yes
R1190Jxxx*-T1-FE	TO-252-5-P2	3,000 pcs	Yes	Yes

xxx : The output voltage can be designated in the range of 2.0V(020) to 12.0V(120) in 0.1V steps.  
(For other voltages, please refer to MARK INFORMATION.)

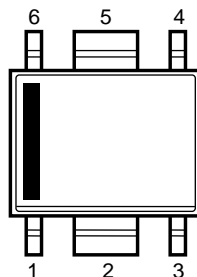
\* : The auto discharge function at off state are options as follows.  
(B) without auto discharge function at off state  
(D) with auto discharge function at off state

## PIN CONFIGURATIONS

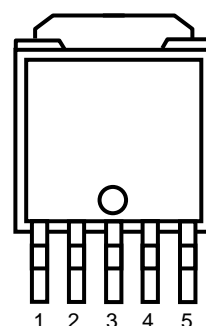
### • SOT-89-5



### • HSOP-6J



### • TO-252-5-P2



## PIN DESCRIPTIONS

### • SOT-89-5

Pin No.	Symbol	Description
1	$V_{OUT}$	Output Pin
2	GND	Ground Pin
3	CE	Chip Enable Pin ("H" Active)
4	DELAY	Delay Pin (for setting Inrush Current Limit Time)
5	$V_{DD}$	Input Pin

### • HSOP-6J

Pin No.	Symbol	Description
1	$V_{OUT}$	Output Pin
2	GND	Ground Pin
3	CE	Chip Enable Pin ("H" Active)
4	DELAY	Delay Pin (for setting Inrush Current Limit Time)
5	GND	Ground Pin
6	$V_{DD}$	Input Pin

### • TO-252-5-P2

Pin No.	Symbol	Description
1	DELAY	Delay Pin (for setting Inrush Current Limit Time)
2	$V_{DD}$	Input Pin
3	GND	Ground Pin
4	$V_{OUT}$	Output Pin
5	CE	Chip Enable Pin ("H" Active)

## ABSOLUTE MAXIMUM RATINGS

Symbol	Item	Rating	Unit
$V_{IN}$	Input Voltage	-0.3 to 18	V
$V_{CE}$	Input Voltage (CE Pin)	-0.3 to $V_{IN}+0.3 \leq 18$	V
$V_{OUT}$	Output Voltage	-0.3 to $V_{IN}+0.3 \leq 18$	V
$P_D$	Power Dissipation (SOT-89-5) *	900	mW
	Power Dissipation (HSOP-6J) *	1700	
	Power Dissipation (TO-252-5-P2) *	1900	
$T_{opt}$	Operating Temperature Range	-40 to 85	°C
$T_{stg}$	Storage Temperature Range	-55 to 125	°C

\*) For Power Dissipation, please refer to PACKAGE INFORMATION.

### ABSOLUTE MAXIMUM RATINGS

Electronic and mechanical stress momentarily exceeded absolute maximum ratings may cause the permanent damages and may degrade the life time and safety for both device and system using the device in the field.

The functional operation at or over these absolute maximum ratings is not assured.

### RECOMMENDED OPERATING CONDITIONS (ELECTRICAL CHARACTERISTICS)

All of electronic equipment should be designed that the mounted semiconductor devices operate within the recommended operating conditions. The semiconductor devices cannot operate normally over the recommended operating conditions, even if when they are used over such conditions by momentary electronic noise or surge. And the semiconductor devices may receive serious damage when they continue to operate over the recommended operating conditions.

## ELECTRICAL CHARACTERISTICS

$V_{IN}=V_{CE}=\text{Set } V_{OUT}+2.0\text{V}$ ,  $C_{IN}=C_{OUT}=4.7\mu\text{F}$ ,  $I_{OUT}=1\text{mA}$ , unless otherwise noted.

The specification in    is checked and guaranteed by design engineering at  $-40^{\circ}\text{C} \leq T_{opt} \leq 85^{\circ}\text{C}$ .

### • R1190x

$T_{opt}=25^{\circ}\text{C}$

Symbol	Item	Conditions		Min.	Typ.	Max.	Unit
V <sub>OUT</sub>	Output Voltage	I <sub>OUT</sub> =1mA	T <sub>opt</sub> =25°C	×0.985		×1.015	V
			−40°C ≤ T <sub>opt</sub> ≤ 85°C	×0.973		×1.027	
ΔV <sub>OUT</sub> /ΔI <sub>OUT</sub>	Load Regulation	Refer to the following table					
V <sub>DIF</sub>	Dropout Voltage	Refer to the following table					
I <sub>SS</sub>	Supply Current	I <sub>OUT</sub> =0mA			150	220	μA
I <sub>standby</sub>	Standby Current (CE Off State)	V <sub>IN</sub> =16V V <sub>CE</sub> =0V			0.1	1.0	μA
ΔV <sub>OUT</sub> /ΔV <sub>IN</sub>	Line Regulation	V <sub>OUT</sub> +0.5V (Min.3.5V) ≤ V <sub>IN</sub> ≤ 16V I <sub>OUT</sub> =1mA			0.02	0.10	%/V
RR	Ripple Rejection	f=1kHz, I <sub>OUT</sub> =100mA			60		dB
V <sub>IN</sub>	Input Voltage			3.5		16	V
ΔV <sub>OUT</sub> /ΔT <sub>opt</sub>	Output Voltage Temperature Coefficient	I <sub>OUT</sub> =1mA, −40°C ≤ T <sub>opt</sub> ≤ 85°C			±100		ppm /°C
I <sub>LIM</sub>	Output Current	Refer to the following table					
I <sub>SC</sub>	Short Current Limit	V <sub>OUT</sub> =0V			300		mA
V <sub>CEH</sub>	CE Input Voltage "H"			1.6		V <sub>IN</sub>	V
V <sub>CEL</sub>	CE Input Voltage "L"			0		0.6	V
T <sub>TSD</sub>	Thermal Shutdown Temperature	Junction Temperature			150		°C
T <sub>TSR</sub>	Thermal Shutdown Released Temperature	Junction Temperature			130		°C
R <sub>LOW</sub>	Low Output Nch Tr. ON Resistance (of D version)	V <sub>IN</sub> =5.0V V <sub>CE</sub> =0V V <sub>OUT</sub> =0.3V			150		Ω

All of units are tested and specified under pulse load conditions such that  $T_j \approx T_{opt}=25^{\circ}\text{C}$  except for Ripple Rejection, Output Voltage Temperature Coefficient, Thermal Shutdown, Load Regulation at 600mA ( $2.0\text{V} \leq V_{OUT} < 2.5\text{V}$ ) and at 700mA ( $2.5\text{V} \leq V_{OUT} < 3.3\text{V}$ ) and at 1000mA ( $3.3\text{V} \leq V_{OUT} \leq 12.0\text{V}$ ), Dropout Voltage at 600mA ( $2.0\text{V} \leq V_{OUT} < 2.5\text{V}$ ) and at 700mA ( $2.5\text{V} \leq V_{OUT} < 3.3\text{V}$ ) and at 1000mA ( $3.3\text{V} \leq V_{OUT} \leq 12.0\text{V}$ ).

The specification in   is checked and guaranteed by design engineering at  $-40^{\circ}\text{C} \leq T_{\text{opt}} \leq 85^{\circ}\text{C}$ .

• Output Current by Output Voltage

Output Voltage $V_{\text{OUT}}$	Output Current $I_{\text{LIM}}$ (mA)	
	Condition	Min.
$2.0\text{V} \leq V_{\text{OUT}} < 2.5\text{V}$	$V_{\text{IN}} = V_{\text{OUT}} + 2.3\text{V}$	<span style="border: 1px solid black; padding: 0 2px;">600</span>
$2.5\text{V} \leq V_{\text{OUT}} < 3.3\text{V}$		<span style="border: 1px solid black; padding: 0 2px;">700</span>
$3.3\text{V} \leq V_{\text{OUT}} \leq 12.0\text{V}$		<span style="border: 1px solid black; padding: 0 2px;">1000</span>

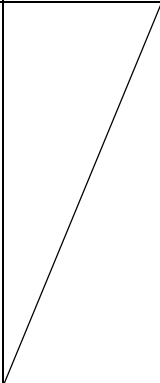
• Load Regulation by Output Voltage

$T_{\text{opt}} = 25^{\circ}\text{C}$

Output Voltage $V_{\text{OUT}}$	Load Regulation $\Delta V_{\text{OUT}} / \Delta I_{\text{OUT}}$ (mV)		
	Condition	Typ.	Max.
$2.0\text{V} \leq V_{\text{OUT}} < 5.0\text{V}$	$V_{\text{IN}} = V_{\text{OUT}} + 2.3\text{V}$ , $1\text{mA} \leq I_{\text{OUT}} \leq 200\text{mA}$	20	<span style="border: 1px solid black; padding: 0 2px;">60</span>
$5.0\text{V} \leq V_{\text{OUT}} \leq 12.0\text{V}$		40	<span style="border: 1px solid black; padding: 0 2px;">100</span>
$2.0\text{V} \leq V_{\text{OUT}} < 2.5\text{V}$	$V_{\text{IN}} = V_{\text{OUT}} + 2.3\text{V}$ , $1\text{mA} \leq I_{\text{OUT}} \leq 600\text{mA}$	80	<span style="border: 1px solid black; padding: 0 2px;">180</span>
$2.5\text{V} \leq V_{\text{OUT}} < 3.3\text{V}$	$V_{\text{IN}} = V_{\text{OUT}} + 2.3\text{V}$ , $1\text{mA} \leq I_{\text{OUT}} \leq 700\text{mA}$	90	<span style="border: 1px solid black; padding: 0 2px;">200</span>
$3.3\text{V} \leq V_{\text{OUT}} < 5.0\text{V}$	$V_{\text{IN}} = V_{\text{OUT}} + 2.3\text{V}$ , $1\text{mA} \leq I_{\text{OUT}} \leq 1\text{A}$	120	<span style="border: 1px solid black; padding: 0 2px;">230</span>
$5.0\text{V} \leq V_{\text{OUT}} \leq 12.0\text{V}$		130	<span style="border: 1px solid black; padding: 0 2px;">250</span>

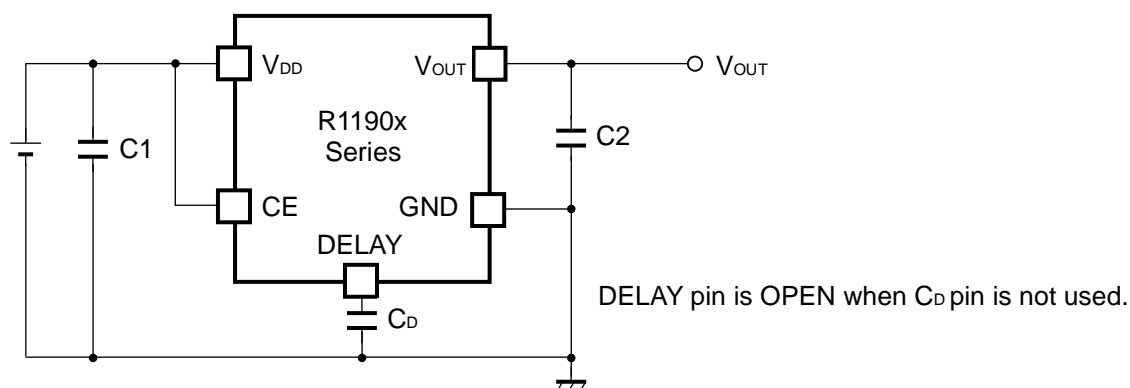
• Dropout Voltage by Output Voltage

$T_{\text{opt}} = 25^{\circ}\text{C}$

Output Voltage $V_{\text{OUT}}$	Dropout Voltage $V_{\text{DIF}}$ (V)					
	Condition	Typ.	Max.	Condition	Typ.	Max.
2.0V	$I_{\text{OUT}} = 200\text{mA}$		<span style="border: 1px solid black; padding: 0 2px;">1.5</span>	$I_{\text{OUT}} = 600\text{mA}$	1.6	<span style="border: 1px solid black; padding: 0 2px;">2.2</span>
2.1V			<span style="border: 1px solid black; padding: 0 2px;">1.4</span>			
2.2V			<span style="border: 1px solid black; padding: 0 2px;">1.3</span>			
2.3V			<span style="border: 1px solid black; padding: 0 2px;">1.2</span>			
2.4V			<span style="border: 1px solid black; padding: 0 2px;">1.1</span>			
2.5V			<span style="border: 1px solid black; padding: 0 2px;">1.0</span>	$I_{\text{OUT}} = 700\text{mA}$	1.5	<span style="border: 1px solid black; padding: 0 2px;">2.15</span>
2.6V			<span style="border: 1px solid black; padding: 0 2px;">0.9</span>			
2.7V			<span style="border: 1px solid black; padding: 0 2px;">0.8</span>			
$2.8\text{V} \leq V_{\text{OUT}} < 3.1\text{V}$			<span style="border: 1px solid black; padding: 0 2px;">0.7</span>			
$3.1\text{V} \leq V_{\text{OUT}} < 3.3\text{V}$		0.4	<span style="border: 1px solid black; padding: 0 2px;">0.7</span>	$I_{\text{OUT}} = 1\text{A}$	1.6	<span style="border: 1px solid black; padding: 0 2px;">2.3</span>
$3.3\text{V} \leq V_{\text{OUT}} < 4.0\text{V}$		0.3	<span style="border: 1px solid black; padding: 0 2px;">0.53</span>			
$4.0\text{V} \leq V_{\text{OUT}} < 5.0\text{V}$		0.25	<span style="border: 1px solid black; padding: 0 2px;">0.42</span>		1.4	
$5.0\text{V} \leq V_{\text{OUT}} < 9.0\text{V}$		0.19	<span style="border: 1px solid black; padding: 0 2px;">0.31</span>		1.1	
$9.0\text{V} \leq V_{\text{OUT}} \leq 12.0\text{V}$		0.1	<span style="border: 1px solid black; padding: 0 2px;">0.18</span>		0.8	<span style="border: 1px solid black; padding: 0 2px;">1.30</span>

All of units are tested and specified under pulse load conditions such that  $T_{\text{j}} \approx T_{\text{opt}} = 25^{\circ}\text{C}$  except for Ripple Rejection, Output Voltage Temperature Coefficient, Thermal Shutdown, Load Regulation at 600mA ( $2.0\text{V} \leq V_{\text{OUT}} < 2.5\text{V}$ ) and at 700mA ( $2.5\text{V} \leq V_{\text{OUT}} < 3.3\text{V}$ ) and at 1000mA ( $3.3\text{V} \leq V_{\text{OUT}} \leq 12.0\text{V}$ ), Dropout Voltage at 600mA ( $2.0\text{V} \leq V_{\text{OUT}} < 2.5\text{V}$ ) and at 700mA ( $2.5\text{V} \leq V_{\text{OUT}} < 3.3\text{V}$ ) and at 1000mA ( $3.3\text{V} \leq V_{\text{OUT}} \leq 12.0\text{V}$ ).

## TYPICAL APPLICATION



(External Components)

C1, C2: Ceramic Capacitor 4.7 $\mu$ F    Nippon Chemi-con Corporation    KTD500B475M43A0T00

## TECHNICAL NOTES

When using these ICs, consider the following points:

### Phase Compensation

In these ICs, phase compensation is made for securing stable operation even if the load current is varied. For this purpose, use a capacitor  $C_{OUT}$  with good frequency characteristics and ESR (Equivalent Series Resistance). (Note: If additional ceramic capacitors are connected with parallel to the output pin with an output capacitor for phase compensation, the operation might be unstable. Because of this, test these ICs with as same external components as ones to be used on the PCB.)

### PCB Layout

Make  $V_{DD}$  and GND lines sufficient. If their impedance is high, noise pickup or unstable operation may result. Connect a capacitor with a capacitance value as much as 4.7 $\mu$ F or more between  $V_{DD}$  and GND pin, and as close as possible to the pins.

Set external components, especially the output capacitor, as close as possible to the ICs, and make wiring as short as possible. (Refer to the TYPICAL APPLICATION diagram above.)

### Thermal Shutdown

There is the built-in thermal-shutdown function in R1190x series. It discontinues operation of the IC when the junction temperature becomes over 150°C (Typ.) and IC re-operates when the junction temperature under 130°C. If the temperature increasing keeps the IC repeats ON and OFF operating. The output becomes the pulse condition.

### Chip Enable Circuit

For the output voltage stability, please do not use the intermediate electric potential (the voltage value between  $V_{CEH}$  and  $V_{CEL}$ ) that causes the supply current increasing and the unstable of output voltage.

### **Inrush-Current Limit Function**

R1190x Series has the function to limit the inrush-current, it limited approximately 0.3A when the voltage regulator is turn ON. It is also possible to set time of the rush-current limitation by connecting capacitor with DELAY pin. The rush-current time ( $t_D$ ) and the value of capacitor ( $C_D$ (F)) is calculatable by the following formula;

$$t_D = (0.000198 + (3.79 \times 10^7 \times C_D)) \times V_{IN}$$

The inrush-current is limited even if the capacitor is not connected with the DELAY pin. In this case, the time is calculated as  $C_D=0$  by the formula above.

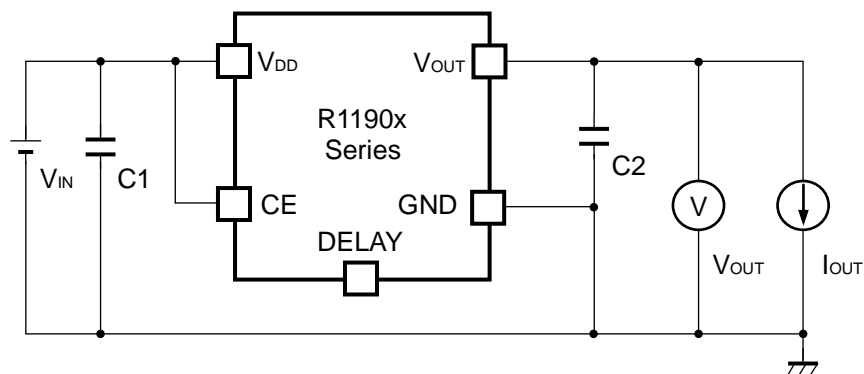
Though, if the value of time is insufficient for controlling the inrush-current, please connect the capacitor with DELAY pin. The DELAY pin is used as OPEN when the capacitor is not used. Please use the DELAY pin as OPEN when the capacitor is not used.

### **Auto-Discharge Function**

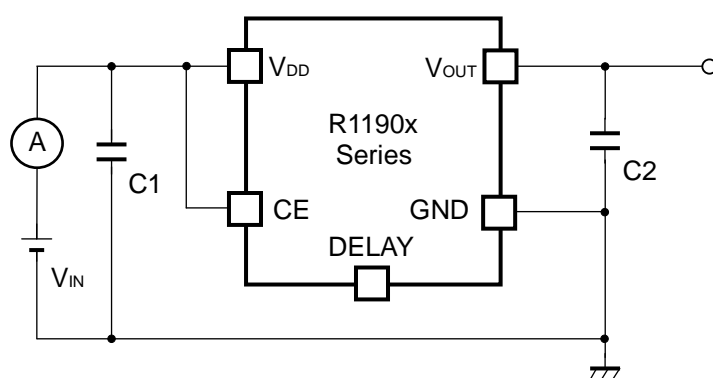
R1190xxxxD series has the auto-discharge function. When "L" signal is put into the Chip-enable pin (CE), the switch between  $V_{OUT}$  and GND is turned ON and the charge at capacitor is discharge rapidly by the auto-discharge function.



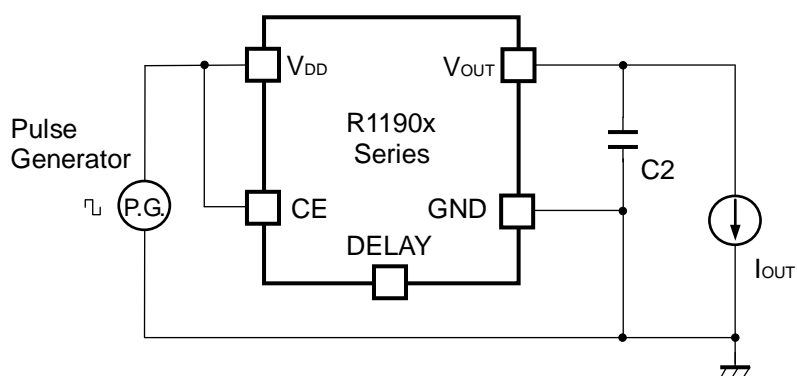
## TEST CIRCUITS



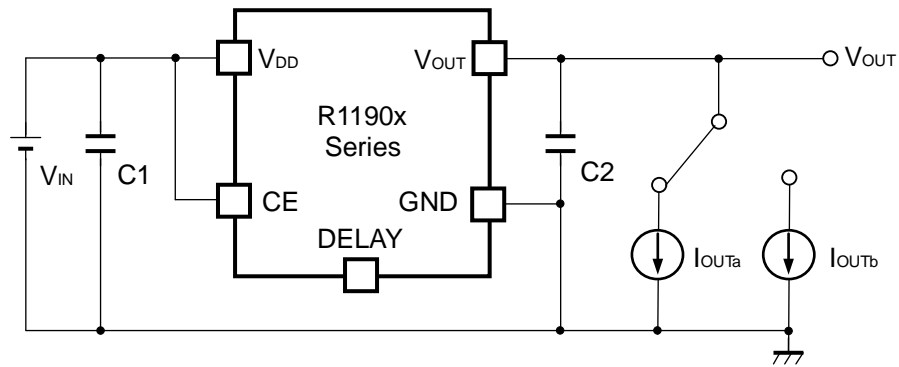
Basic Test Circuit



Test Circuit for Supply Current



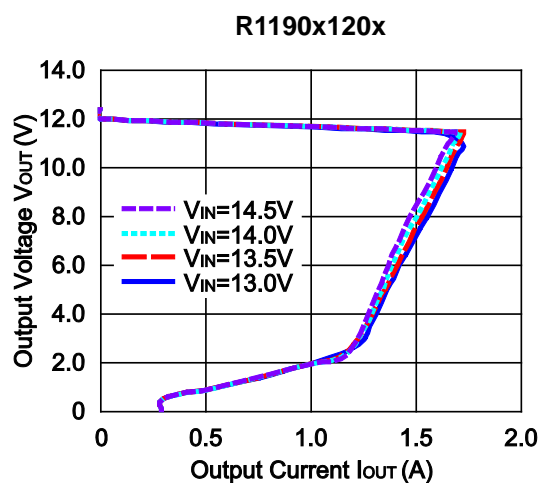
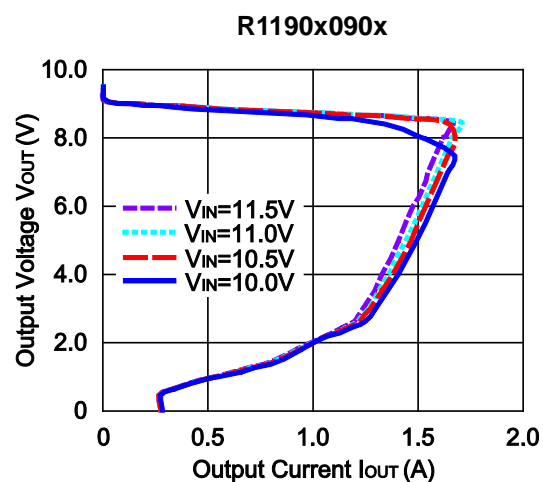
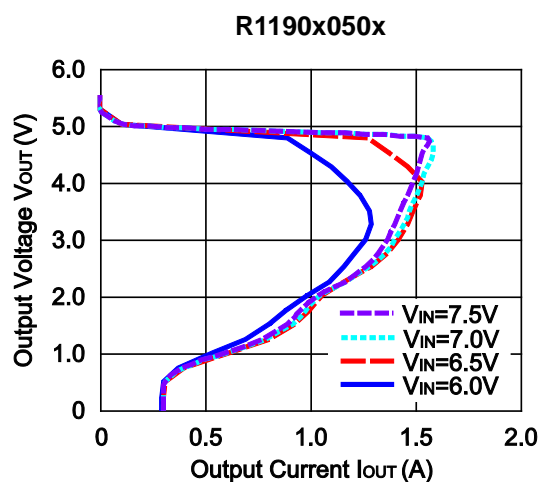
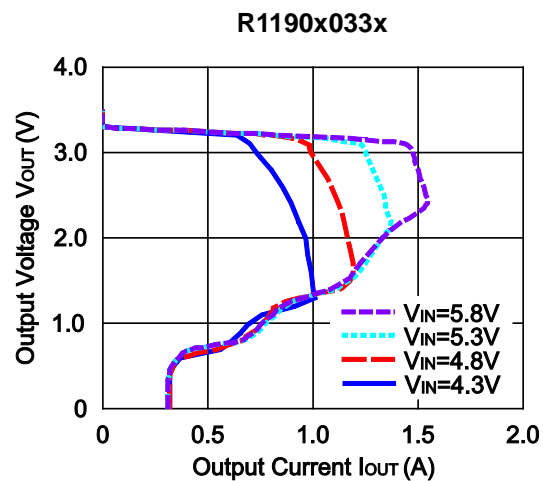
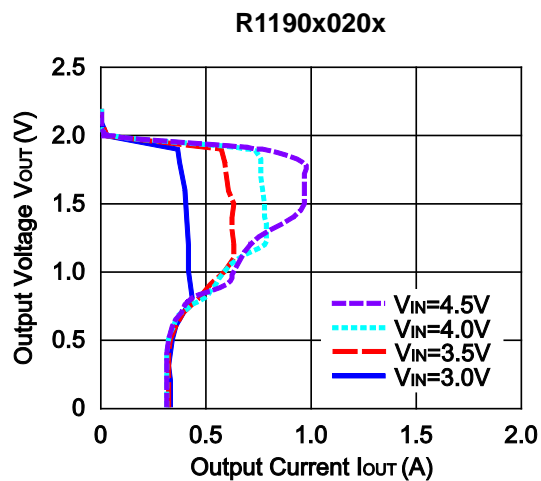
Test Circuit for Ripple Rejection



**Test Circuit for Load Transient Response**

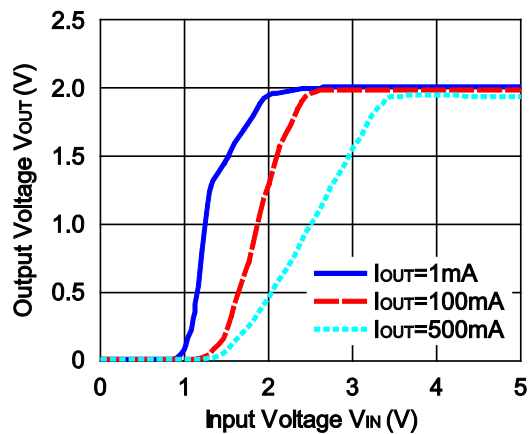
## TYPICAL CHARACTERISTIC

1) Output Voltage vs. Output Current ( $C_1=C_2=4.7\mu\text{F}$ ,  $T_{\text{opt}}=25^\circ\text{C}$ )

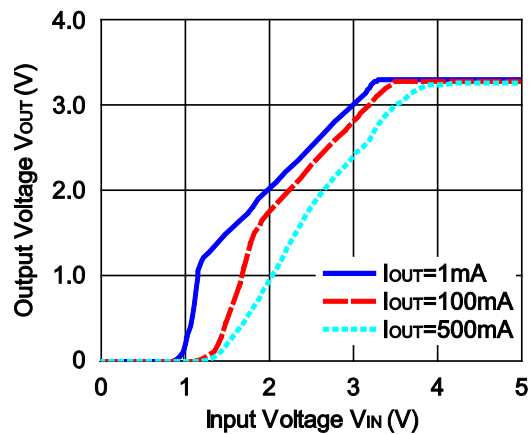


2) Output Voltage vs. Input Voltage ( $C_1=C_2=4.7\mu\text{F}$ ,  $T_{\text{opt}}=25^\circ\text{C}$ )

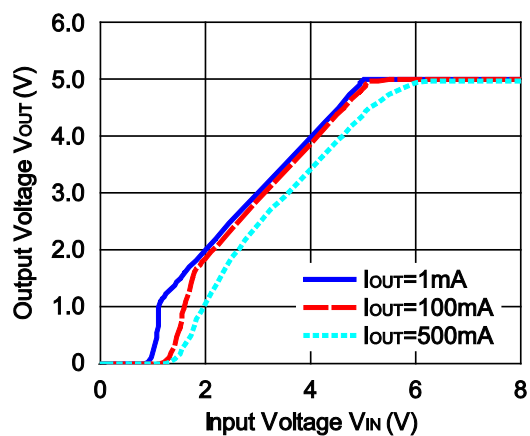
R1190x020x



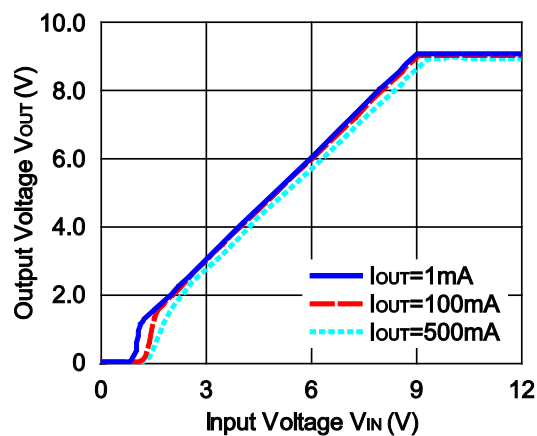
R1190x033x



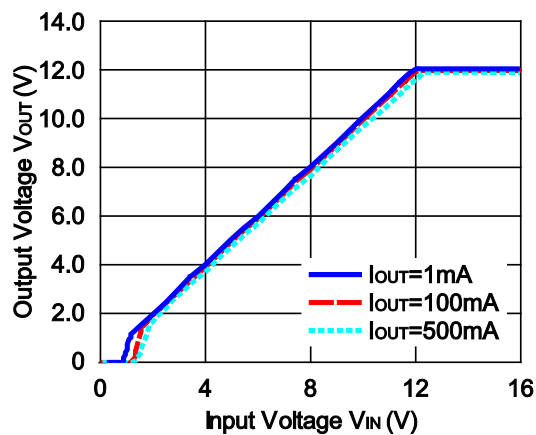
R1190x050x

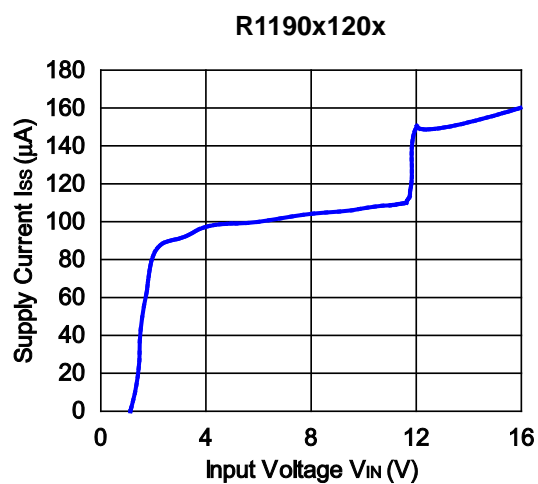
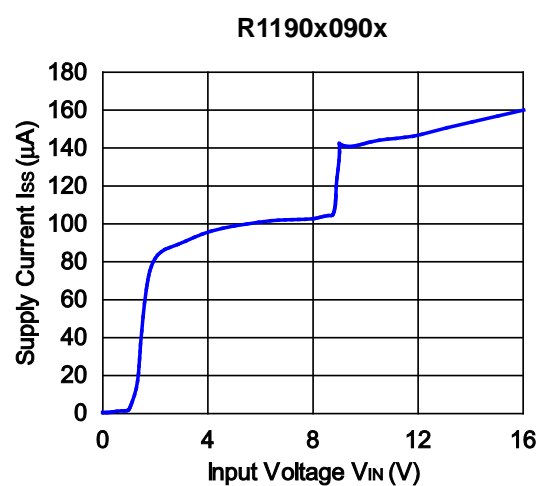
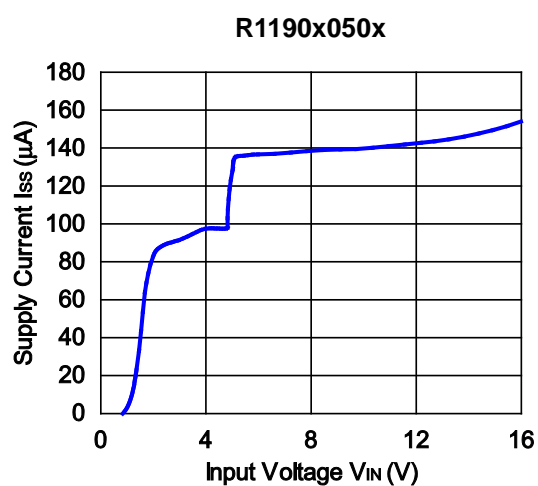
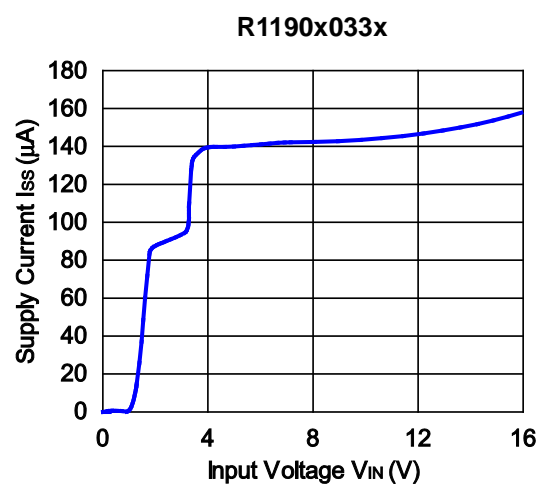
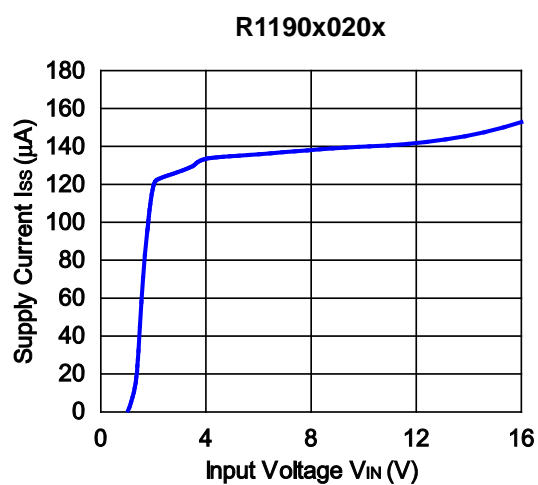


R1190x090x



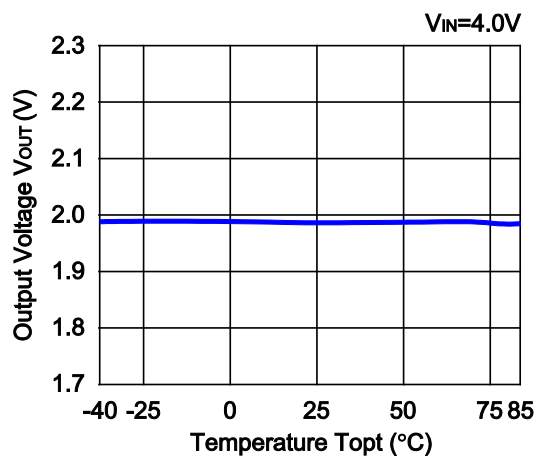
R1190x120x



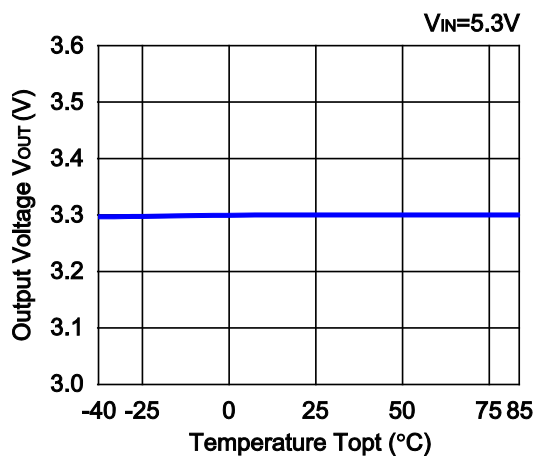
3) Supply Current vs. Input Voltage ( $C_1=C_2=4.7\mu\text{F}$ ,  $T_{\text{opt}}=25^\circ\text{C}$ )

## 4) Output Voltage vs. Temperature ( $C_1=C_2=4.7\mu\text{F}$ , $I_{\text{OUT}}=1\text{mA}$ )

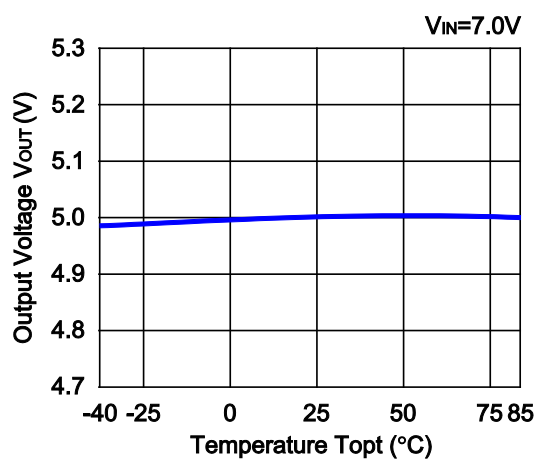
R1190x020x



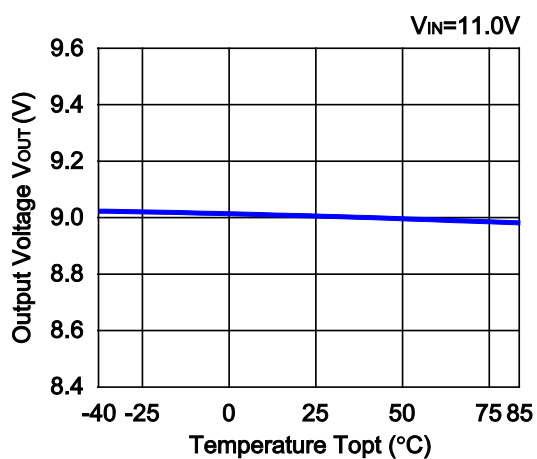
R1190x033x



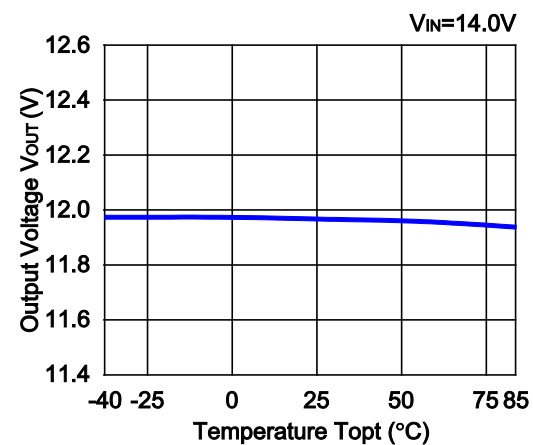
R1190x050x

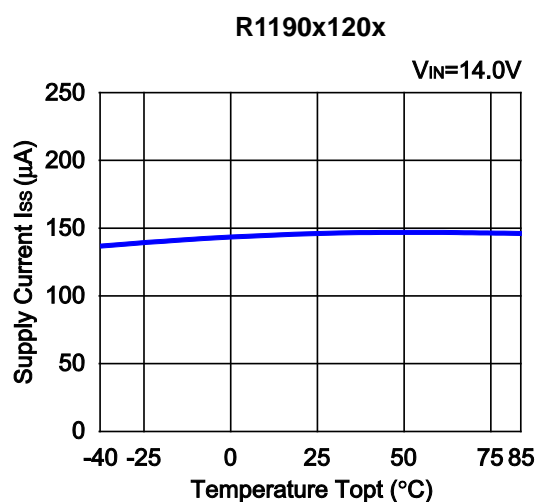
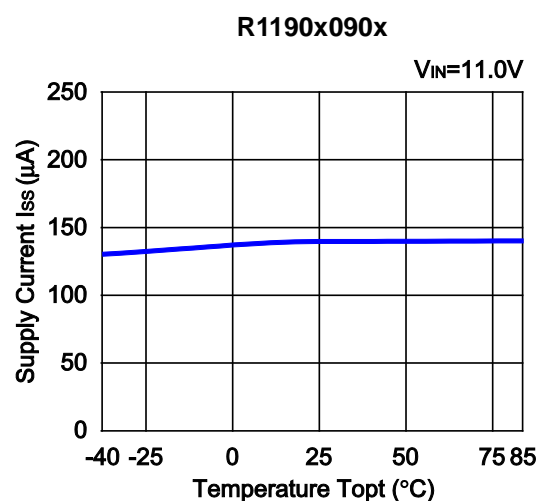
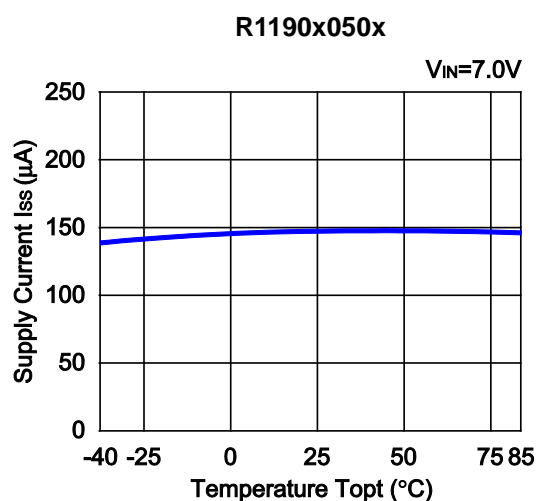
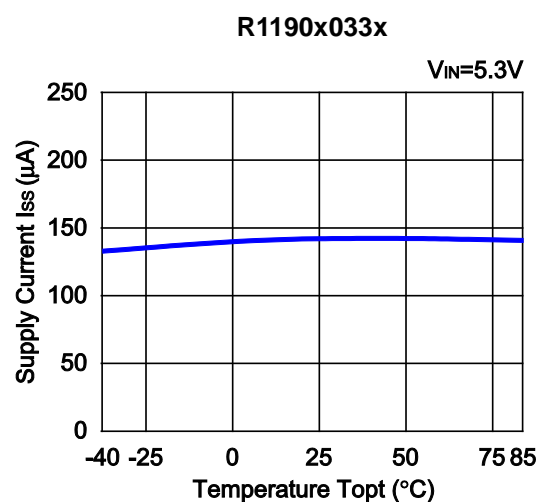
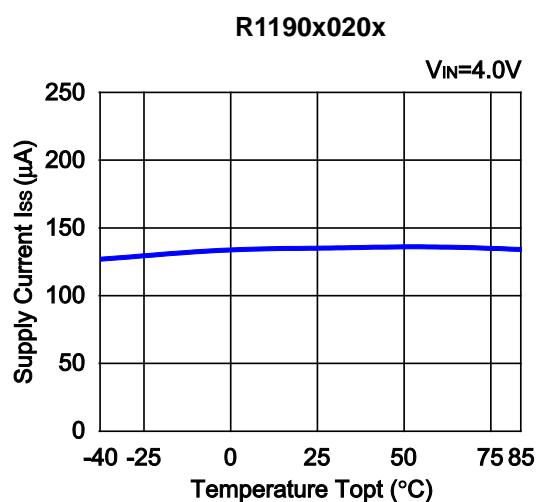


R1190x090x

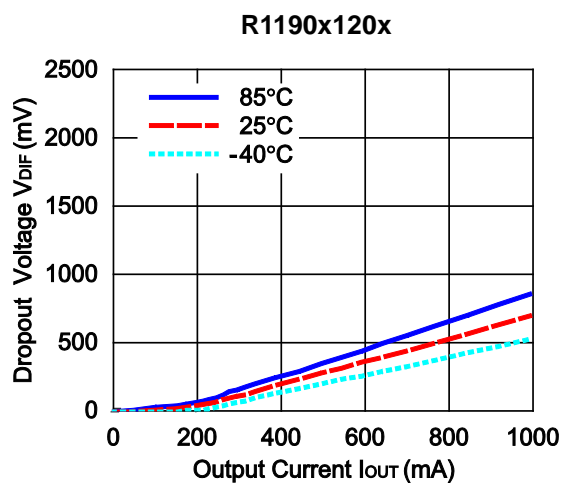
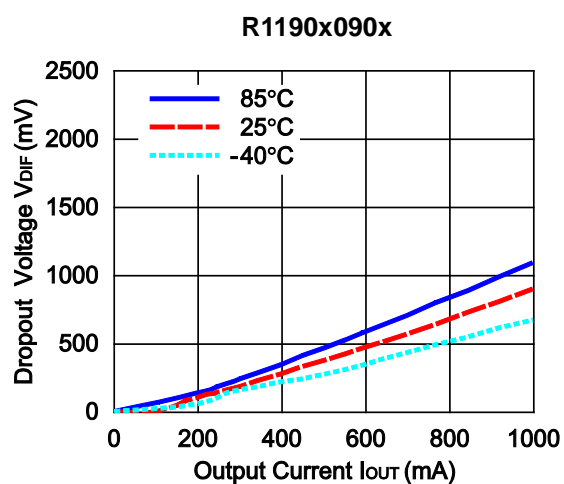
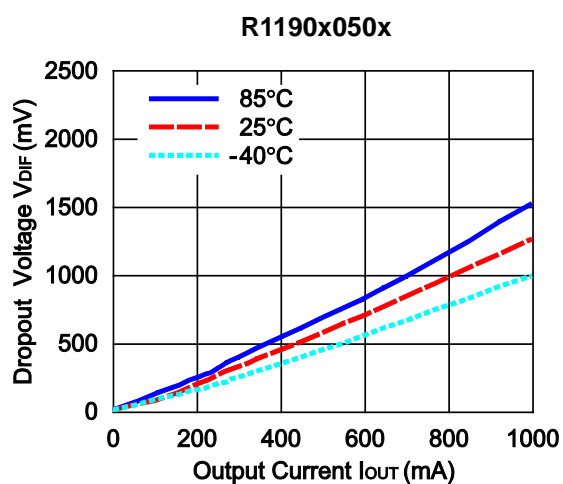
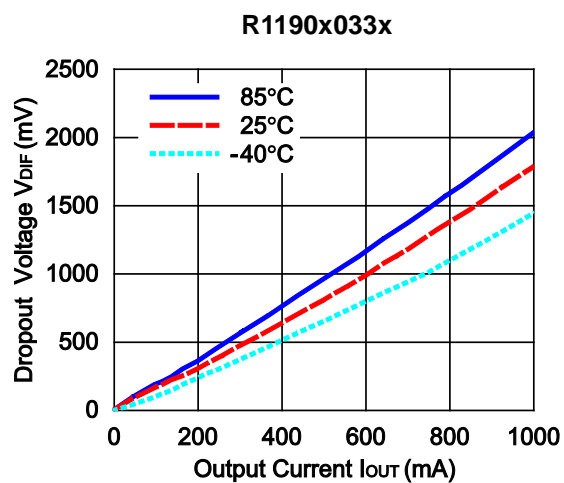
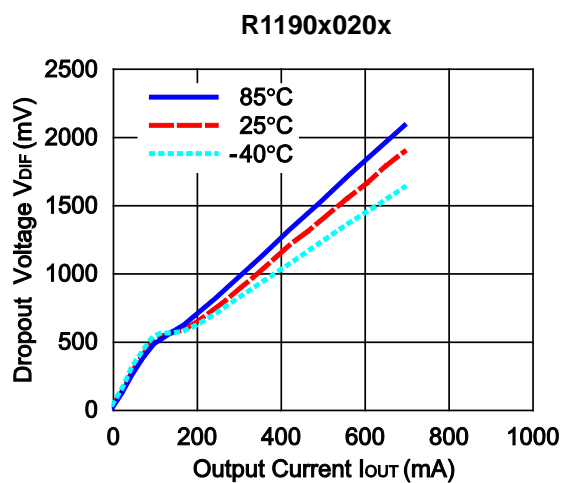


R1190x120x



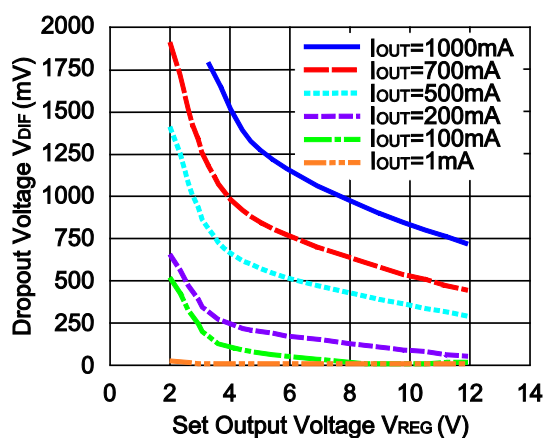
5) Supply Current vs. Temperature (C1=C2=4.7 $\mu$ F)

## 6) Dropout Voltage vs. Output Current (C1=C2=4.7μF)

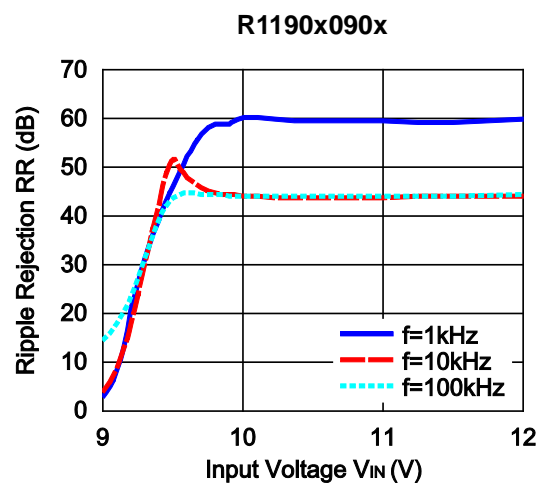
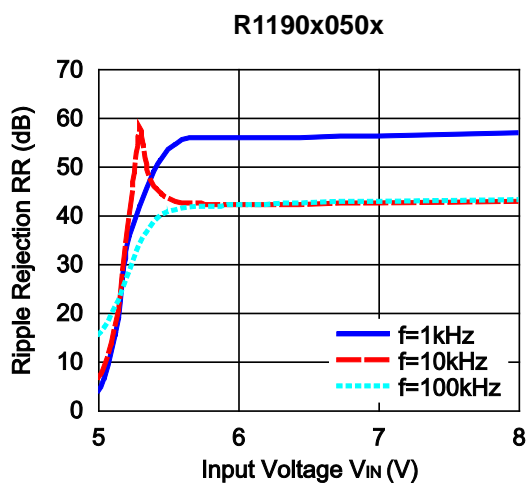
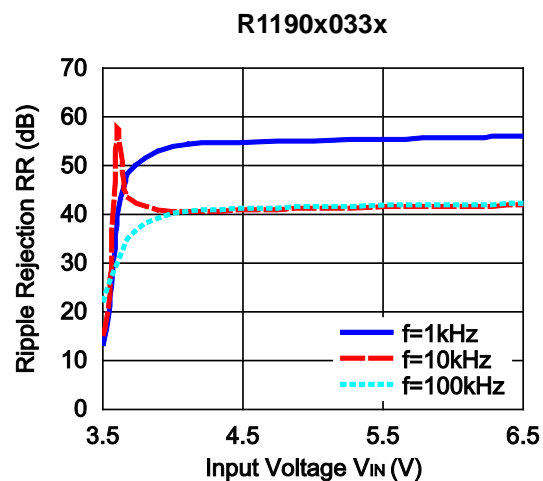
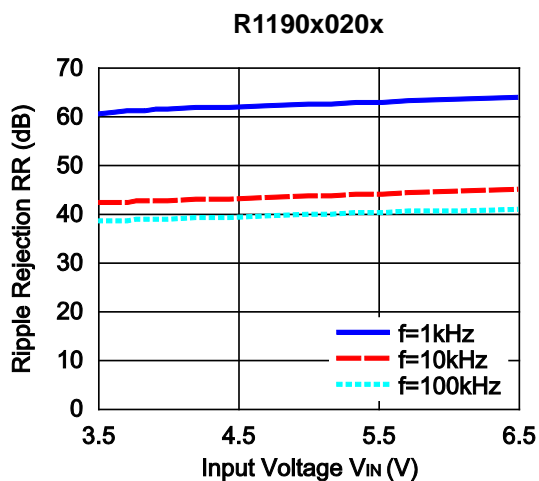


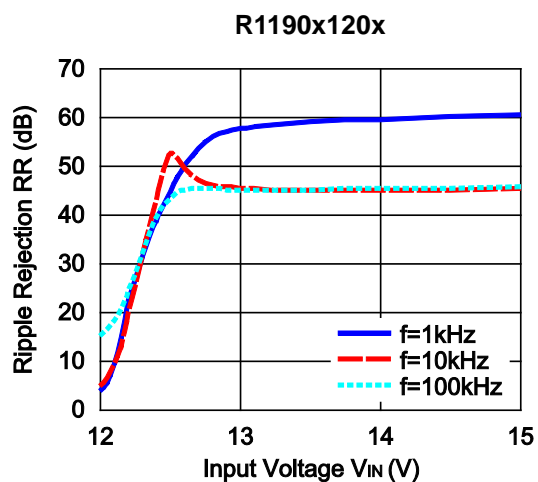


### 7) Dropout Voltage vs. Set Output Voltage ( $C_1=C_2=4.7\mu\text{F}$ , $T_{\text{opt}}=25^\circ\text{C}$ )

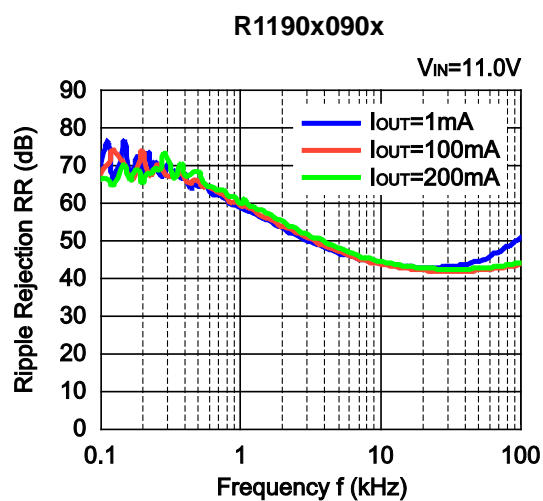
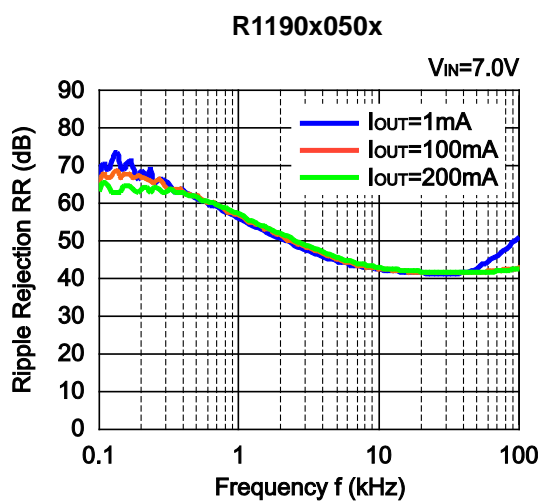
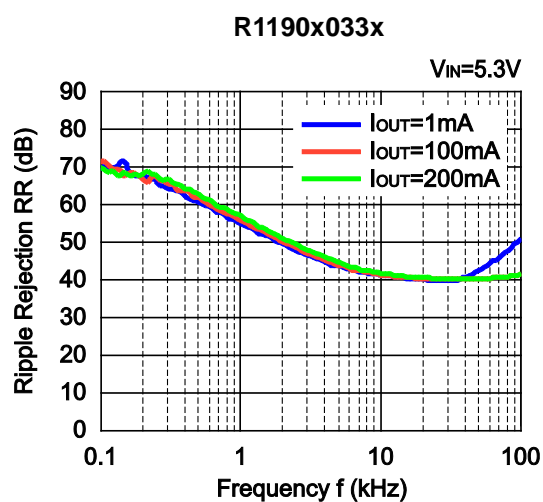
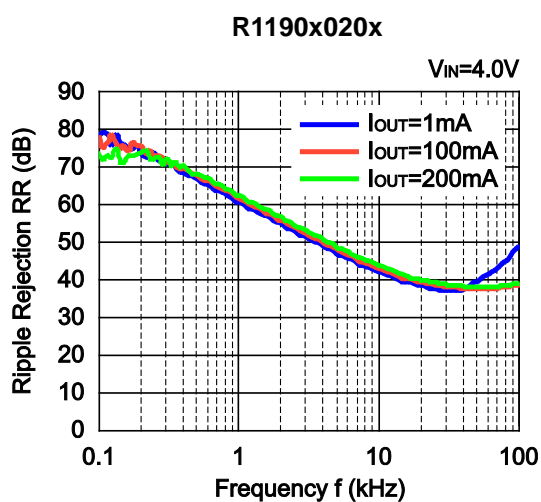


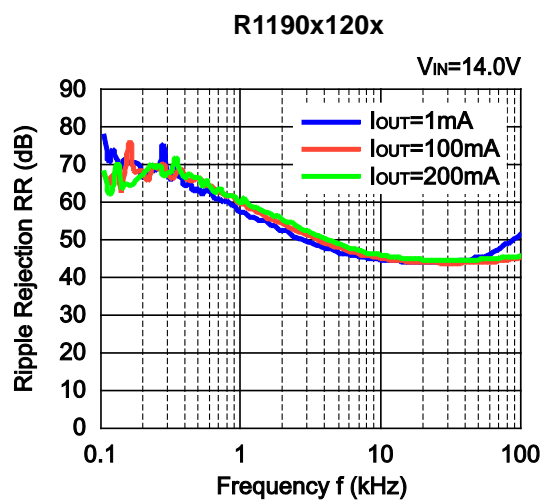
### 8) Ripple Rejection vs. Input Voltage ( $C_1=\text{none}$ , $C_2=4.7\mu\text{F}$ , $I_{\text{OUT}}=100\text{mA}$ , $\text{Ripple}=0.2\text{Vp-p}$ , $T_{\text{opt}}=25^\circ\text{C}$ )



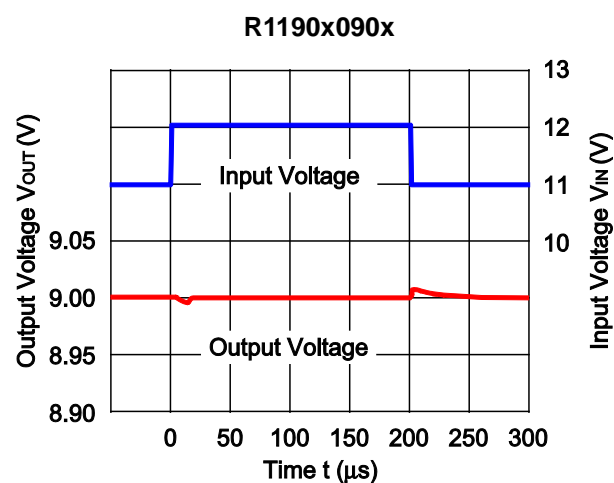
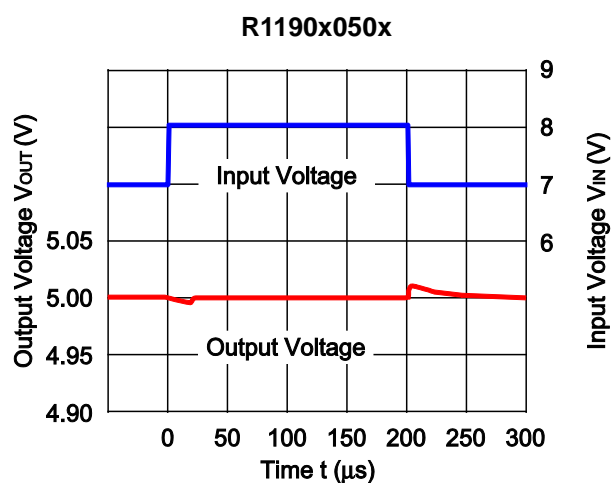
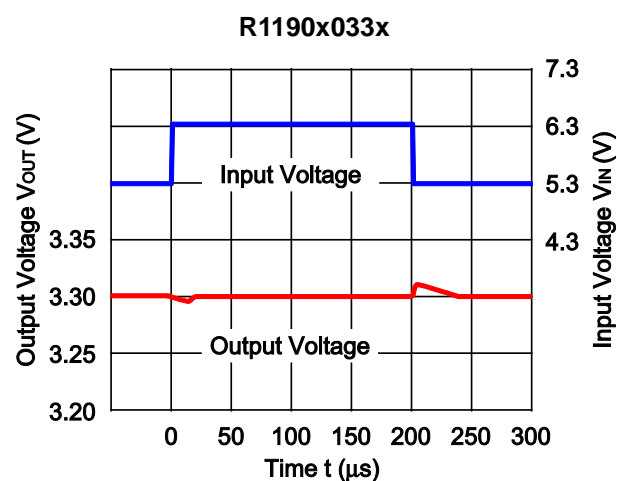
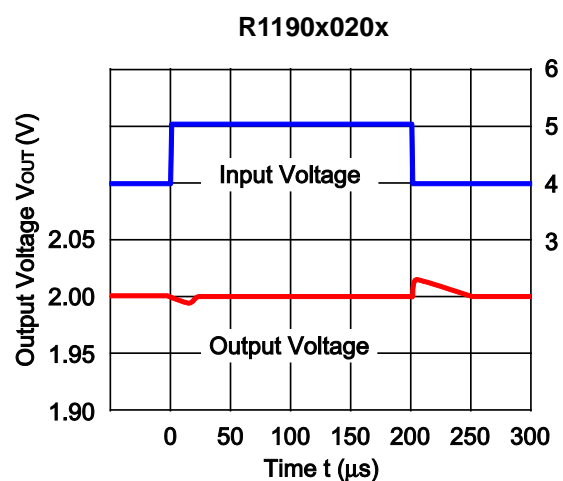


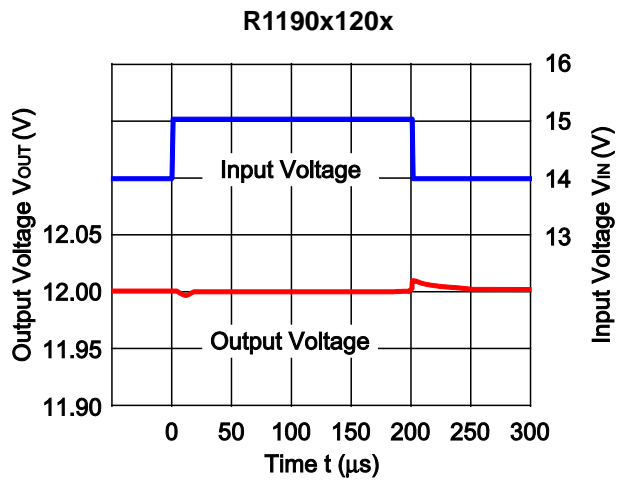
**9) Ripple Rejection vs. Frequency ( $C_1=\text{none}$ ,  $C_2=4.7\mu\text{F}$ , Ripple=0.2Vp-p,  $T_{\text{opt}}=25^\circ\text{C}$ )**



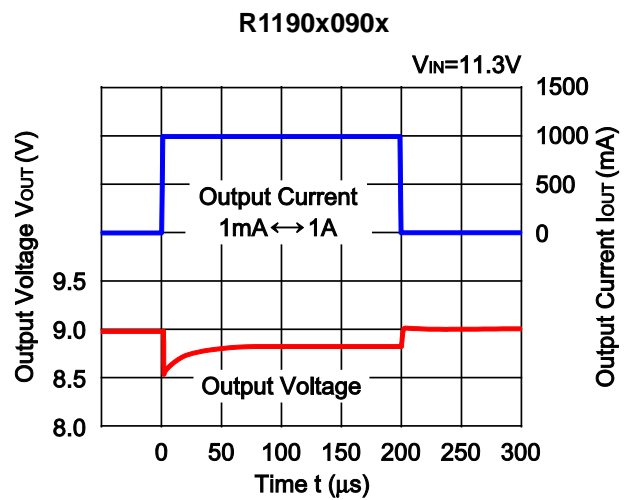
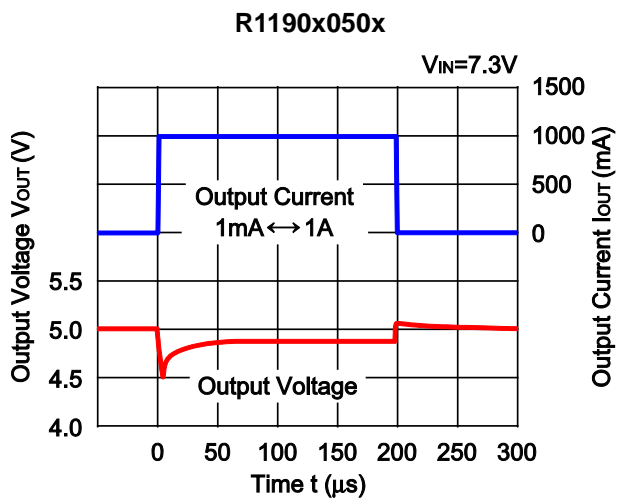
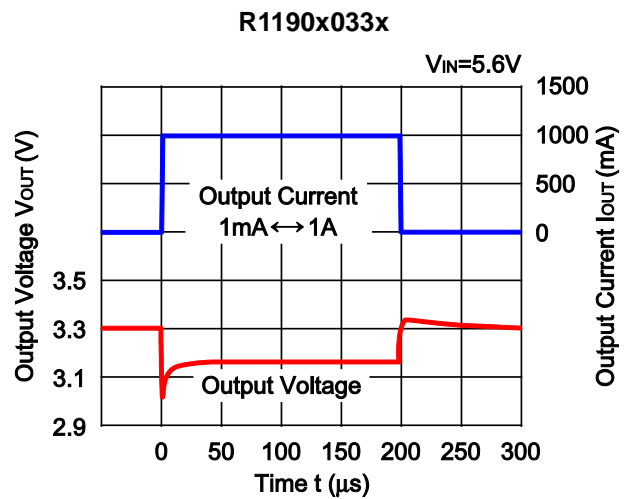
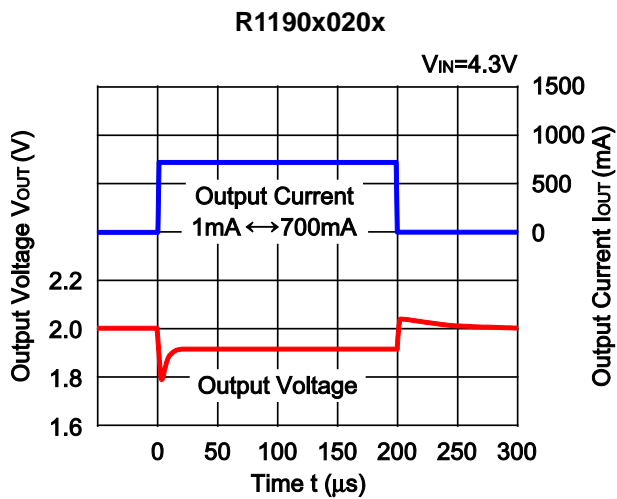


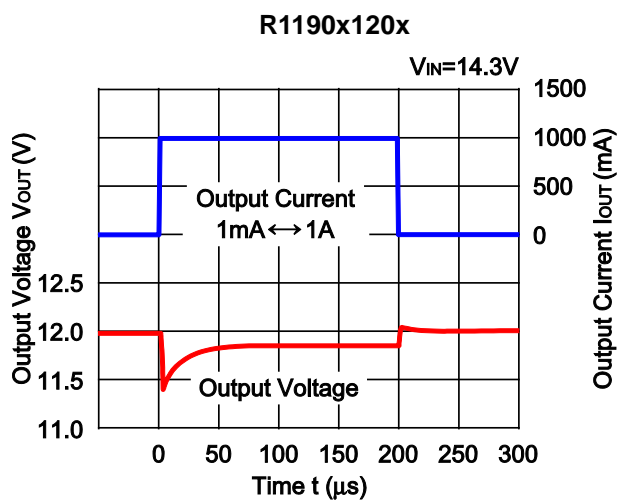
**10) Input Transient Response ( $C1=none$ ,  $C2=4.7\mu F$ ,  $I_{OUT}=1mA$ ,  $t_r=t_f=0.5\mu s$ )**



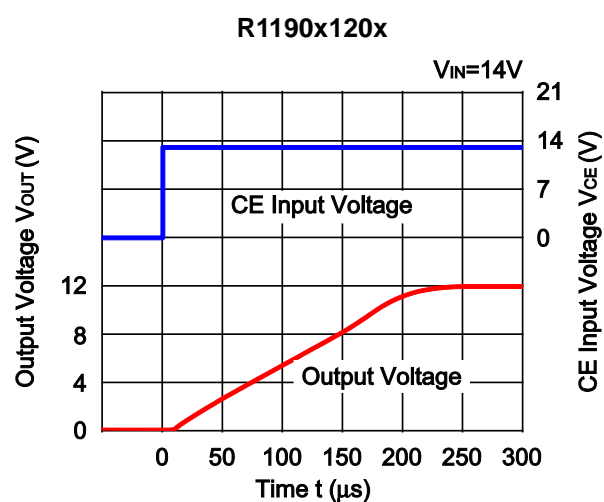
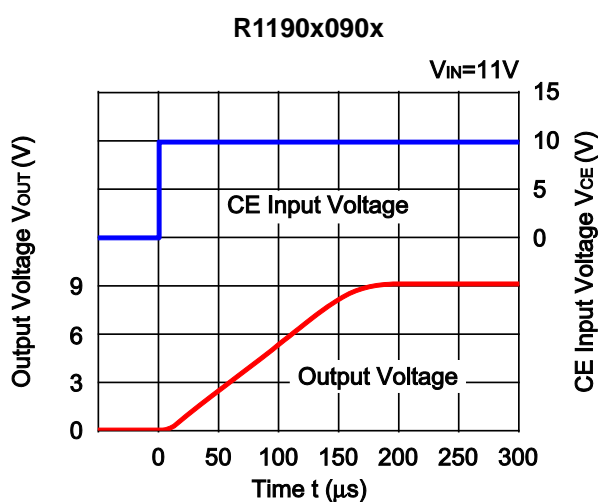
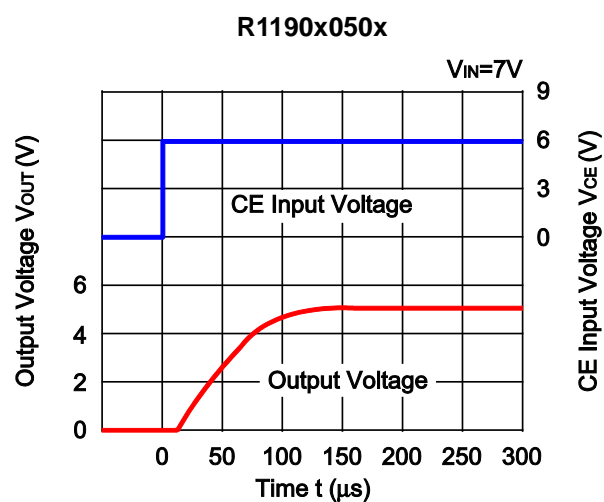
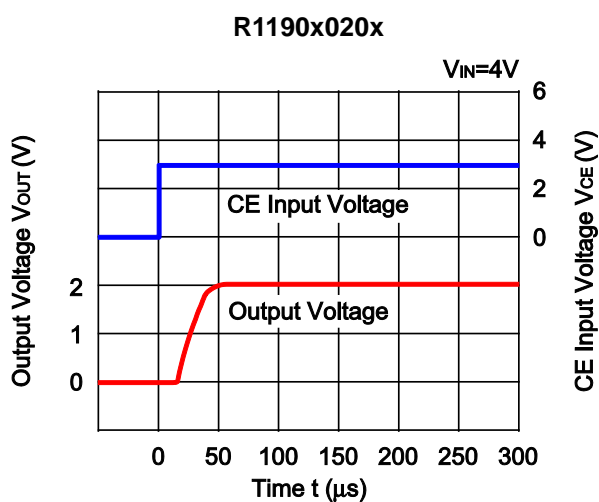


11) Load Transient Response ( $C_1=C_2=4.7\mu$ F,  $t_r=t_f=0.5\mu$ s)

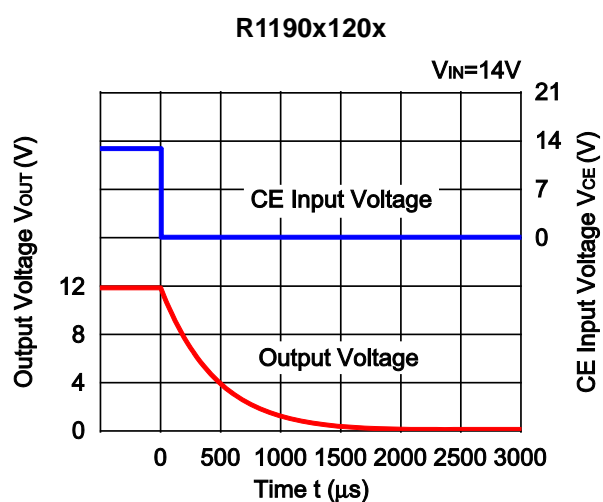
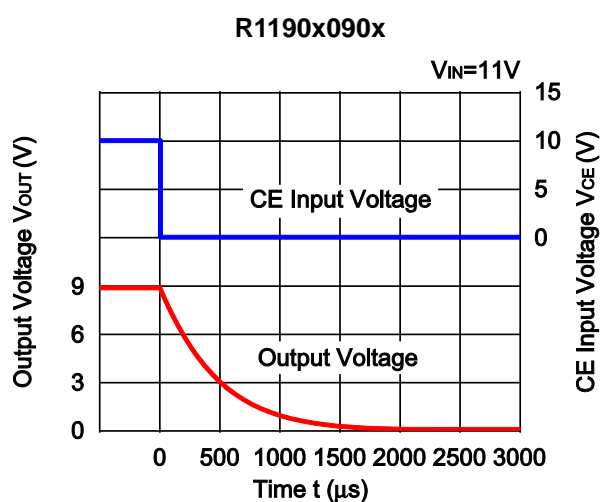
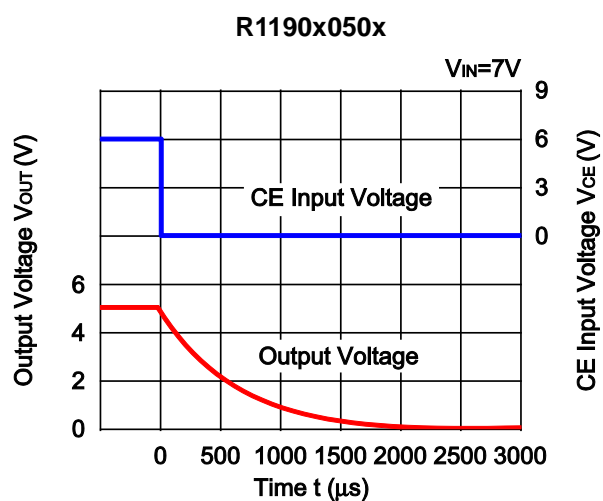
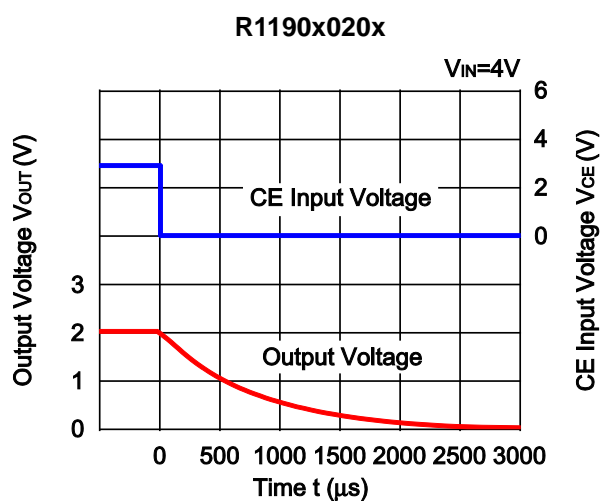




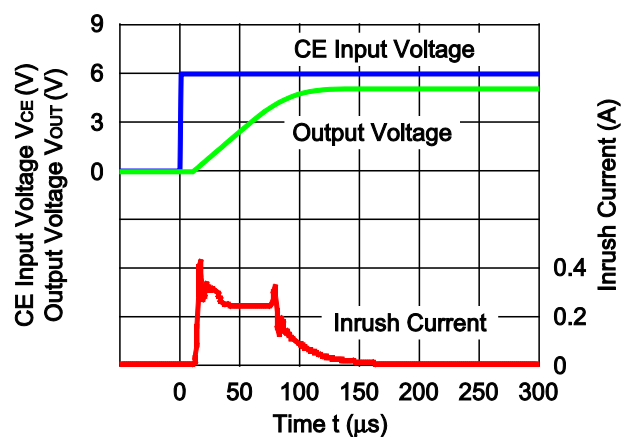
## 12) Turn On Speed with CE Pin ( $I_{OUT}=1mA$ , $C1=C2=4.7\mu F$ , $t_r=t_f=0.5\mu s$ )

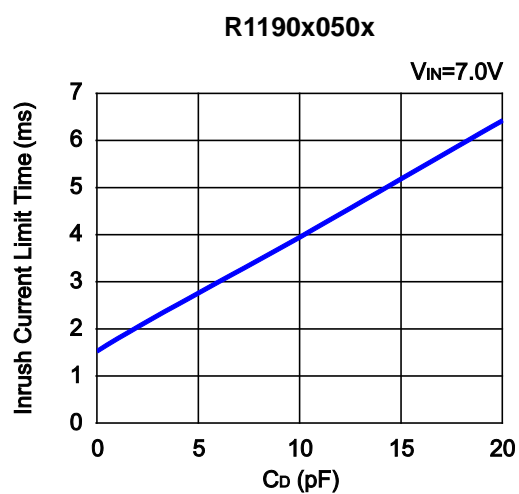
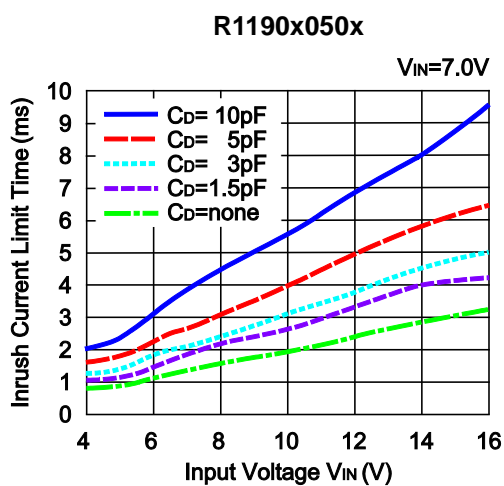
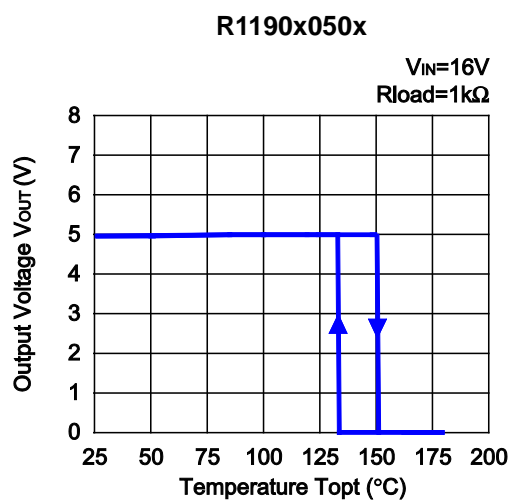


13) Turn Off Speed with CE Pin (D Version) ( $I_{OUT}=1\text{mA}$ ,  $C_1=C_2=4.7\mu\text{F}$ ,  $t_r=t_f=0.5\mu\text{s}$ )



14) Inrush Current at Turn On ( $V_{IN}=7.0\text{V}$ ,  $C_1=C_2=4.7\mu\text{F}$ ,  $C_D=\text{none}$ ,  $t_r=t_f=0.5\mu\text{s}$ )



15) Inrush Current Limit vs.  $C_D$  Capacitance ( $C_1=C_2=4.7\mu\text{F}$ )16) Inrush Current Limit Delay Time vs. Input Voltage ( $C_1=C_2=4.7\mu\text{F}$ )17) Thermal Shutdown vs. Temperature ( $C_1=C_2=4.7\mu\text{F}$ )

## ESR vs. Output Current

When using these ICs, consider the following points:

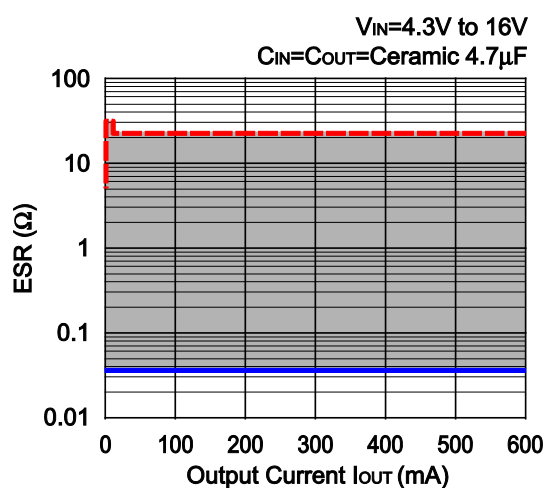
The relations between  $I_{OUT}$  (Output Current) and ESR of an output capacitor are shown below.

The conditions when the white noise level is under  $40\mu V_{rms}$  (Avg.) are marked as the hatched area in the graph.

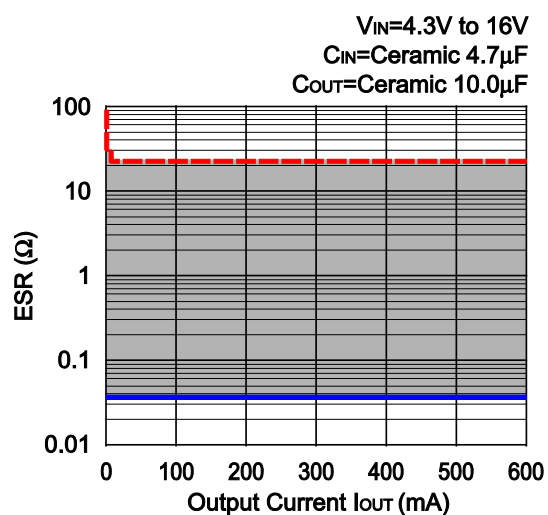
### Measurement conditions

- Frequency Band : 10Hz to 1MHz
- Temperature :  $-40^{\circ}\text{C}$  to  $85^{\circ}\text{C}$
- Hatched Area : Noise level is under  $40\mu V_{rms}$  (Avg.)
- $C_{IN}$  :  $4.7\mu\text{F}$  (KTD500B475M43A0T00)
- $C_{OUT}$  :  $4.7\mu\text{F}$  (KTD500B475M43A0T00)
- $C_{OUT}$  :  $10.0\mu\text{F}$  (FK22Y5V1H106Z)

R1190x020x



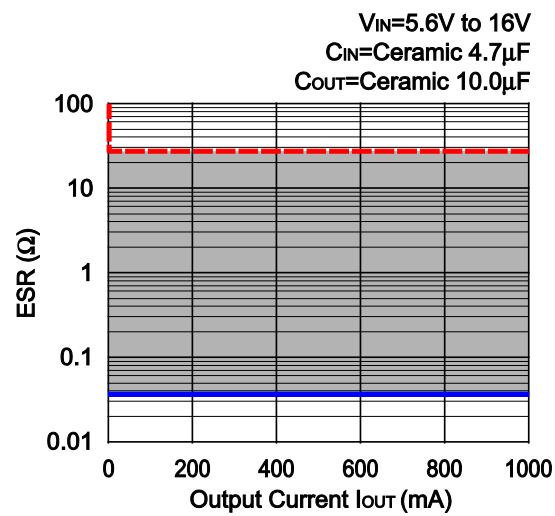
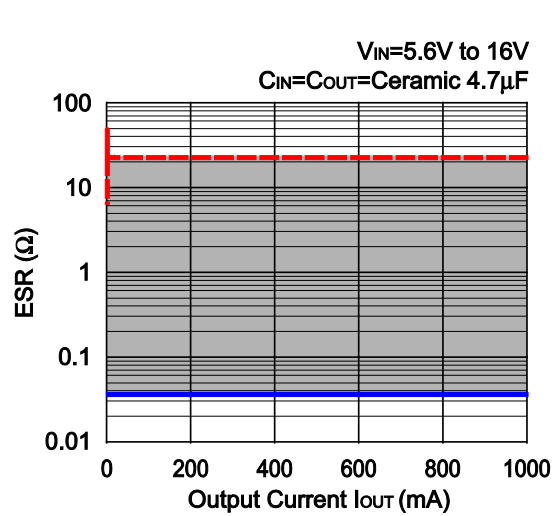
R1190x020x



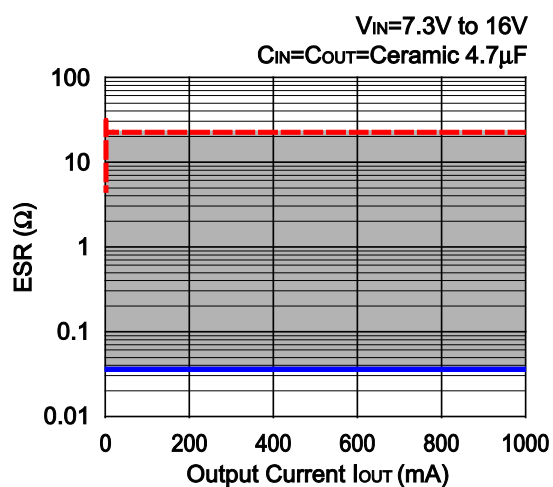
R1190x033x

R1190x033x

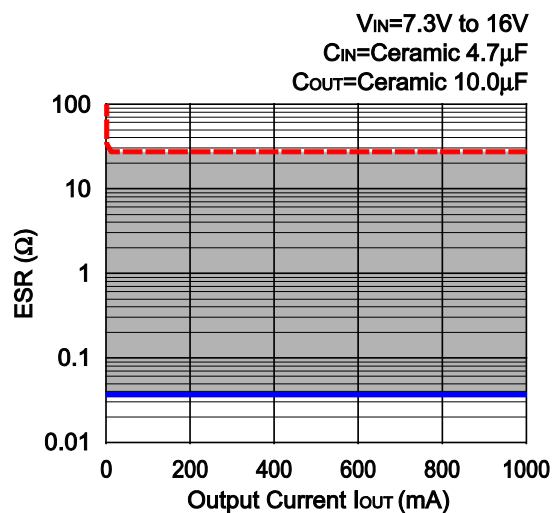




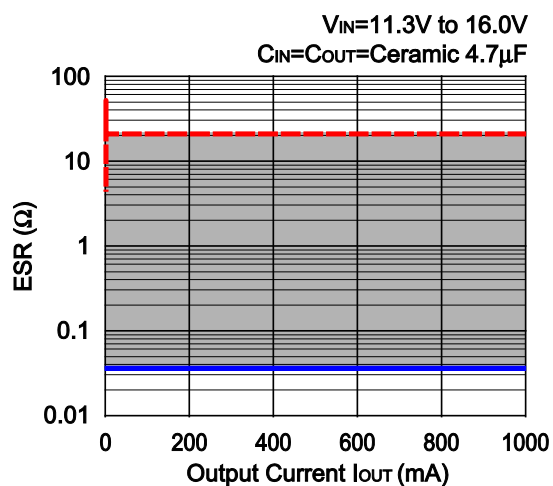
R1190x050x



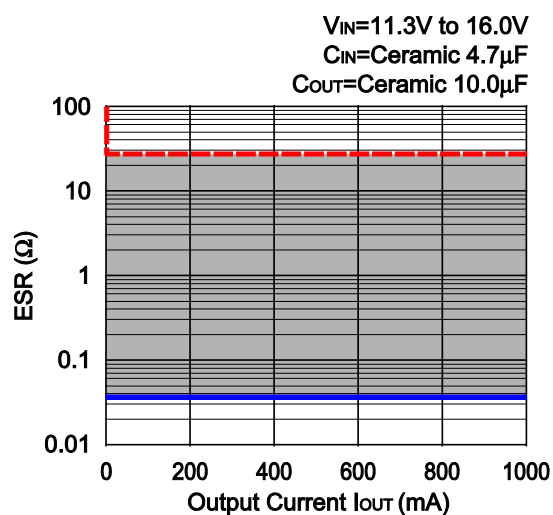
R1190x050x



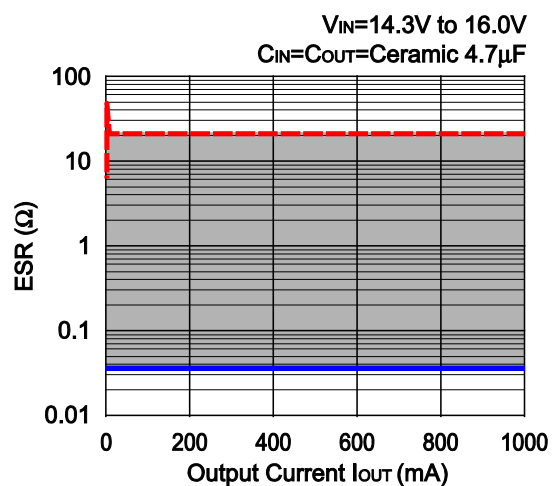
R1190x090x



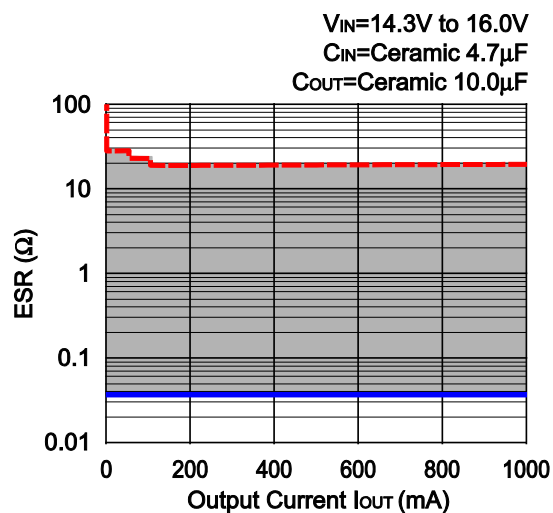
R1190x090x



R1190x120x



R1190x120x





1. The products and the product specifications described in this document are subject to change or discontinuation of production without notice for reasons such as improvement. Therefore, before deciding to use the products, please refer to Ricoh sales representatives for the latest information thereon.
2. The materials in this document may not be copied or otherwise reproduced in whole or in part without prior written consent of Ricoh.
3. Please be sure to take any necessary formalities under relevant laws or regulations before exporting or otherwise taking out of your country the products or the technical information described herein.
4. The technical information described in this document shows typical characteristics of and example application circuits for the products. The release of such information is not to be construed as a warranty of or a grant of license under Ricoh's or any third party's intellectual property rights or any other rights.
5. The products listed in this document are intended and designed for use as general electronic components in standard applications (office equipment, telecommunication equipment, measuring instruments, consumer electronic products, amusement equipment etc.). Those customers intending to use a product in an application requiring extreme quality and reliability, for example, in a highly specific application where the failure or misoperation of the product could result in human injury or death (aircraft, spacevehicle, nuclear reactor control system, traffic control system, automotive and transportation equipment, combustion equipment, safety devices, life support system etc.) should first contact us.
6. We are making our continuous effort to improve the quality and reliability of our products, but semiconductor products are likely to fail with certain probability. In order to prevent any injury to persons or damages to property resulting from such failure, customers should be careful enough to incorporate safety measures in their design, such as redundancy feature, fire containment feature and fail-safe feature. We do not assume any liability or responsibility for any loss or damage arising from misuse or inappropriate use of the products.
7. Anti-radiation design is not implemented in the products described in this document.
8. The X-ray exposure can influence functions and characteristics of the products. Confirm the product functions and characteristics in the evaluation stage.
9. WLCSP products should be used in light shielded environments. The light exposure can influence functions and characteristics of the products under operation or storage.
10. There can be variation in the marking when different AOI (Automated Optical Inspection) equipment is used. In the case of recognizing the marking characteristic with AOI, please contact Ricoh sales or our distributor before attempting to use AOI.
11. Please contact Ricoh sales representatives should you have any questions or comments concerning the products or the technical information.



**Ricoh is committed to reducing the environmental loading materials in electrical devices with a view to contributing to the protection of human health and the environment.**

Ricoh has been providing RoHS compliant products since April 1, 2006 and Halogen-free products since April 1, 2012.

**RICOH** RICOH ELECTRONIC DEVICES CO., LTD.

<https://www.e-devices.ricoh.co.jp/en/>

#### Sales & Support Offices

##### **Ricoh Electronic Devices Co., Ltd.**

##### **Shin-Yokohama Office (International Sales)**

2-3, Shin-Yokohama 3-chome, Kohoku-ku, Yokohama-shi, Kanagawa, 222-8530, Japan  
Phone: +81-50-3814-7687 Fax: +81-45-474-0074

##### **Ricoh Americas Holdings, Inc.**

675 Campbell Technology Parkway, Suite 200 Campbell, CA 95008, U.S.A.  
Phone: +1-408-610-3105

##### **Ricoh Europe (Netherlands) B.V.**

##### **Semiconductor Support Centre**

Prof. W.H. Keesomlaan 1, 1183 DJ Amstelveen, The Netherlands  
Phone: +31-20-5474-309

##### **Ricoh International B.V. - German Branch**

##### **Semiconductor Sales and Support Centre**

Oberrather Strasse 6, 40472 Düsseldorf, Germany  
Phone: +49-211-6546-0

##### **Ricoh Electronic Devices Korea Co., Ltd.**

3F, Haesung Bldg, 504, Teheran-ro, Gangnam-gu, Seoul, 135-725, Korea  
Phone: +82-2-2135-5700 Fax: +82-2-2051-5713

##### **Ricoh Electronic Devices Shanghai Co., Ltd.**

Room 403, No.2 Building, No.690 Bibo Road, Pu Dong New District, Shanghai 201203,  
People's Republic of China  
Phone: +86-21-5027-3200 Fax: +86-21-5027-3299

##### **Ricoh Electronic Devices Shanghai Co., Ltd.**

##### **Shenzhen Branch**

1205, Block D(Jinlong Building), Kingkey 100, Hongbao Road, Luohu District,  
Shenzhen, China  
Phone: +86-755-8348-7600 Ext 225

##### **Ricoh Electronic Devices Co., Ltd.**

##### **Taipei office**

Room 109, 10F-1, No.51, Hengyang Rd., Taipei City, Taiwan (R.O.C.)  
Phone: +886-2-2313-1621/1622 Fax: +886-2-2313-1623