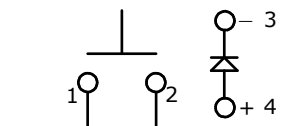
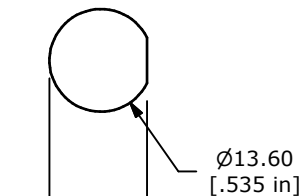


## PANEL MOUNTING



▲ **CIRCUIT: SPST**  
OFF-(ON)  
MOMENTARY

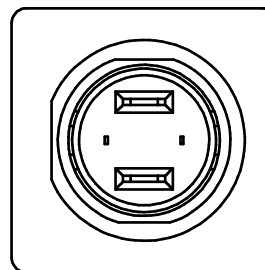
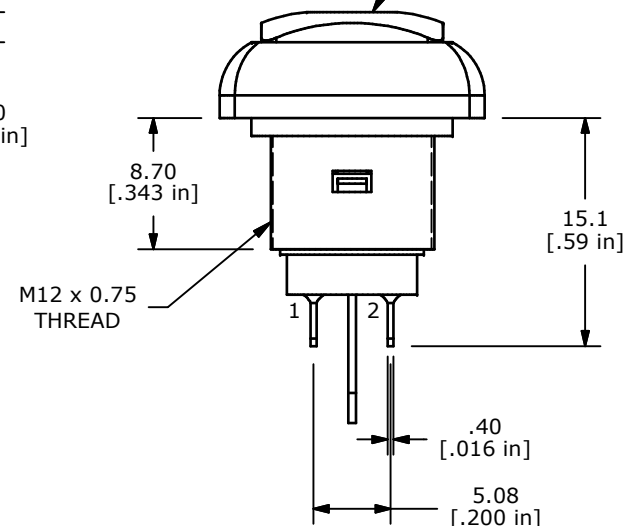
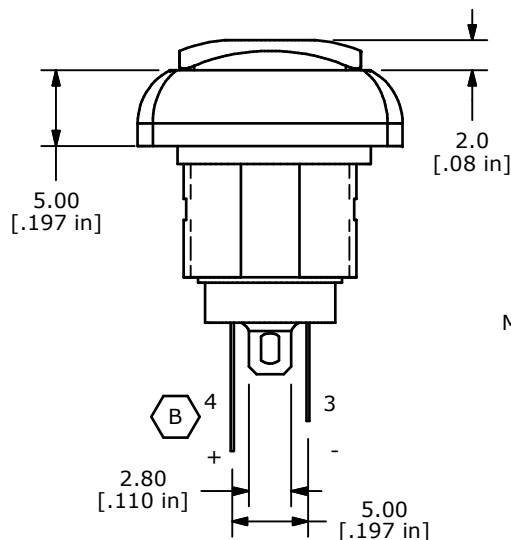
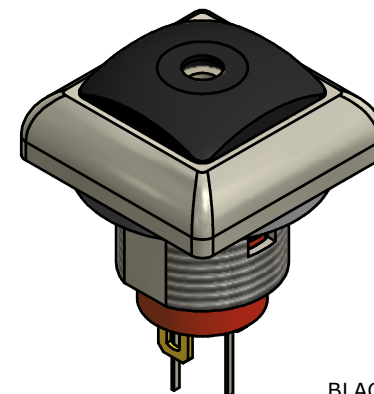
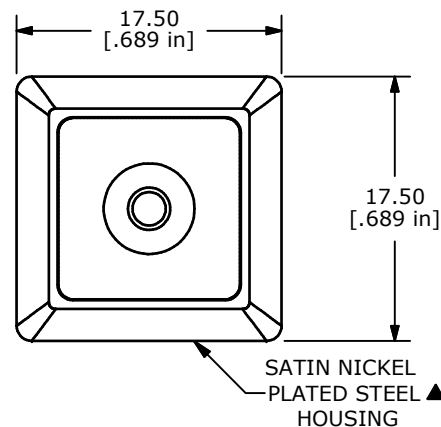
12.90  
[.508 in]



LED SPECS	UNITS	BLUE
FORWARD CURRENT	mA	20
FORWARD VOLTAGE @20mA	V	2.8-3.2
LUMINOUS INTENSITY @ 20mA	mcd	28-70

## NOTE:

- ALL DIMENSIONS IN MM [INCH]
- GENERAL TOLERANCE: X.X=±0.4  
X.XX=±0.25
- TERMINAL NUMBERS FOR REF ONLY
- CIRCUIT: SPST OFF-MOMENTARY ON
- CONTACT MATERIAL: Gold OVER SILVER
- RATING: 500mA @ 48 VAC  
200mA @ 50 VDC  
200mA @250 VAC
- ELECTRIC LIFE: 500,000 CYCLES AT FULL LOAD
- CONTACT RESISTANCE: 50 MILLIOHM MAX. (INITIAL)
- INSULATION RESISTANCE: 1,000 MEGA-OHM MIN. @ 500VDC.
- DIELECTRIC STRENGTH: 1,500 VAC FOR 1 MINUTE.
- ▲ OPERATING FORCE: 350 gf +/- 150 gf
- OPERATING TEMPERATURE: -30°C TO +85°C.
- CONTACT BOUNCE: 10ms MAX.
- TRAVEL: 1.5±0.25MM
- PANEL THICKNESS RANGE: 1.5 - 4.0 mm.
- ▲ DENOTES CRITICAL PARAMETER.
- 2002/95/EC (ROHS) COMPLIANT
- MAX TORQUE APPLIED TO MOUNTING NUT: 1.5Nm
- HARDWARE INCLUDED:
  - T081101 LOCK WASHER (QTY 1)
  - T081102 HEX NUT (QTY 1)
  - T081103 RUBBER O-RING (QTY 1)
- SEAL RATING: IP67 TO FRONT PANEL



C	21600	CHANGE SEAL RATING FROM IP65 TO IP67	10/1/14	EBP
B	21493	FIX LED LEAD POSITIONS AND POLARITY	6/25/14	EBP
A	20242	RELEASE FOR PRODUCTION	10/28/11	BMA
REV	PCR NO	DESCRIPTION	DATE	BY

THE INFORMATION CONTAINED IN THIS DOCUMENT IS PROPRIETARY  
TO E-SWITCH AND IS NOT TO BE COPIED OR TRANSFERRED



TITLE RP8400B2M1CENICBLKBLU

SCALE 2:1

DATE 10/28/2011

DR BMA

DWG ST084008

REV C