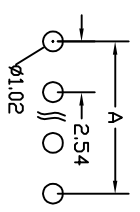
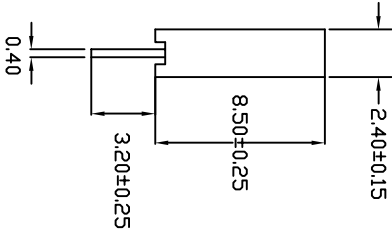
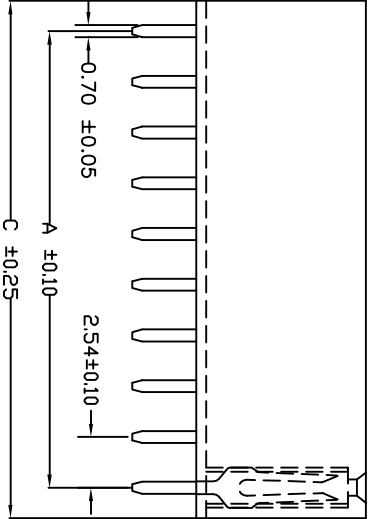


No. of Contacts	DIMENSIONS	
	A	C
2	2.54	5.58
3	5.08	8.12
4	7.62	10.66
5	10.16	13.20
6	12.70	15.74
7	15.24	18.28
8	17.78	20.82
9	20.32	23.36
10	22.86	25.90
11	25.40	28.44
12	27.94	30.98
13	30.48	33.52
14	33.02	36.06
15	35.56	38.60
16	38.10	41.14
17	40.64	43.68
18	43.18	46.22
19	45.72	48.76
20	48.26	51.30
21	50.80	53.84
22	53.34	56.38
23	55.88	58.92
24	58.42	61.46
25	60.96	64.00
26	63.50	66.54
27	66.04	69.08
28	68.58	71.62
29	71.12	74.16
30	73.66	76.70
31	76.20	79.24
32	78.74	81.78
33	81.28	84.32
34	83.82	86.86
35	86.36	89.40
36	88.90	91.94
37	91.44	94.48
38	93.98	97.02
39	96.52	99.56
40	99.06	102.10



Recommended P.C. Board Hole Layout

**SPECIFICATIONS**

Current Rating: 3 Amps  
 Insulator resistance: 5000 Megohms min.  
 Contact resistance: 20 m ohms max.  
 Dielectric withstanding: AC 1000 V  
 Operating Temperature: -40°~+125°C  
 Contact Material: Phosphor bronze  
 Insulator Material: PBT, UL94V-0  
 Plating: Tin, Gold or Selectively plated

Note:  
 Selective plating: gold plated on contact area.  
 Tin on solder area

replace "xx" with number of positions to complete P/N

For Plating Options, the 3rd letter of the part number denotes plating:  
 P = Gold Flash Overall      S = 10u" Overall Gold  
 W = Selective Gold Flash    Z = 10u" Selective Gold  
 X = 30u" Selective Gold      T = Tin all over

Sullins Electronics  
 San Marcos, CA  
 www.SullinsElectronics.com

GENERAL TOLERANCE	
XX. ±	XXX. ±
X. ± 0.20	.XXX ±
.X ± 0.10	X.° ±
XX ± 0.05	X° ±

SCALE	NTS	DRAWN	BC
UNIT	MM	CHECK	
SIZE		APPROVE	

DATE	REV	DATE	DATE
4-01-03			

DWG. NO.	PARTS NO.
6044A	PP_Cxx1LFBN

TITLE	DESCRIPTION
2.54mm FEMALE HEADER 8.50mm Profile	

REV.	SHEET
A	1/1

A

B

C

D

E

3

2

1

3

2

1