

BL0102-14-34

SUPER BRIGHT RED

SUPER BRIGHT GREEN

Features

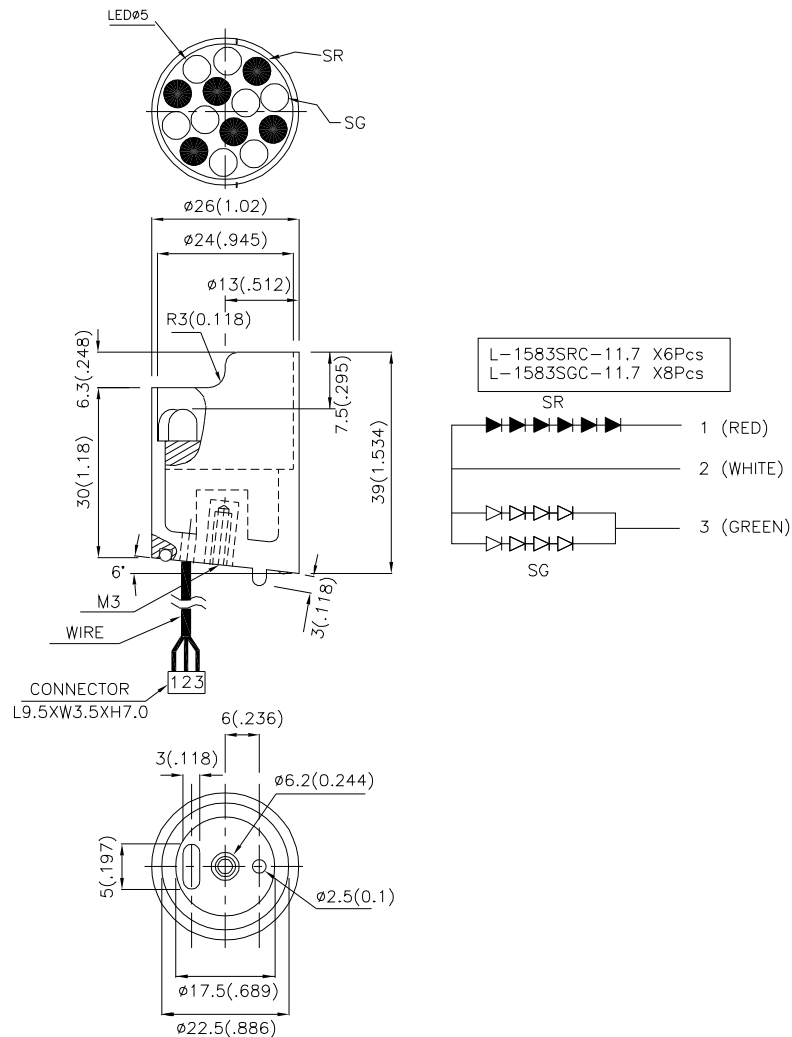
- HIGH VISIBILITY.
- EMITTING COLOR: BLUE .
- NO.OF BUILT-IN 5mm LED LAMPS: SUPER BRIGHT RED 6 PCS,SUPER BRIGHT GREEN 8 PCS.
- WATERPROOF PACKAGE WITH HOOD SUITABLE FOR OUTDOOR AND INDOOR INFORMATION BOARDS.
- RoHS COMPLIANT.

Description

The Super Bright Red source color devices are made with Gallium Aluminum Arsenide Red Light Emitting Diode.

The Super Bright Green source color devices are made with Gallium Phosphide Green Light Emitting Diode.

Package Dimensions



Notes:

1. All dimensions are in millimeters (inches).
2. Tolerance is $\pm 0.25(0.01")$ unless otherwise noted.
3. Specifications are subjected to change without notice.

Electrical / Optical Characteristics at T_A=25°C

Symbol	Parameter	Device	Color	Min	Typ.	Max.	Units	Test Conditions	
I _v	Luminous Intensity	BL0102-14-34	Super Bright Red Super Bright Green	1500 650	2800 1600	-	mcd	I _F =20mA I _F =40mA	
2θ _{1/2}	Viewing Angle		Super Bright Red Super Bright Green	-	40	-	deg	-	
V _F	Forward Voltage		Super Bright Red Super Bright Green	-	11 8.8	15 10	V	I _F =20mA I _F =40mA	
λ _{peak}	Peak Wavelength		Super Bright Red Super Bright Green	-	660 565		nm	I _F =20mA I _F =40mA	
λ _D	Dominant Wavelength		Super Bright Red Super Bright Green	-	640 568		nm	I _F =20mA I _F =40mA	
Δλ _{1/2}	Spectral Line Half-width		Super Bright Red Super Bright Green	-	20 30		nm	I _F =20mA I _F =40mA	
I _R	Reverse Current		All			-	30	uA	V _R = 5V

Absolute Maximum Ratings at T_A=25°C

Parameter	Type	Units
Power dissipation	860	mW
DC Forward Current	80	mA
Reverse Voltage	5	V
Operating Temperature	-40°C To +70°C	
Storage Temperature	-40°C To +85°C	

Remarks:

If there is sorting requirement (eg. forward voltage, luminous intensity or wavelength), the condition as follows:

- 1.Wavelength: +/-1nm (Test condition is based on the sorting standard).
- 2.Luminous intensity: +/-15% (Test condition is based on the sorting standard).
- 3.Forward voltage: +/-0.1V (Test condition is based on the sorting standard).