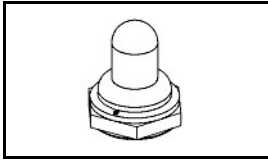


## 1825612-1 Product Details

[Share](#) [Print](#) [Email](#)


**1825612-1**  
(B1440004)

TE Internal Number:  
1825612-1

 **Active**

### Hardware and Accessories for Mechanical Switches

 Always EU RoHS/ELV Compliant (Statement of Compliance)

#### Product Highlights:

- Accessory Type = Toggle Switch Boot Seal
- Thread Size = 1/4-40
- Color = Black
- Used With Switch Type Toggle Switch
- RoHS compliant, ELV compliant

[View all Features](#)

### Quick Links

- ▶ [Pricing & Availability](#)
- ▶ [Search for Tooling](#)
- ▶ [Product Feature Selector](#)
- ▶ [Contact Us About This Product](#)

[Add to My Part List](#)

[Request Sample](#)

[Find Similar Products](#)

[Buy Product](#)

### Documentation & Additional Information

#### Product Drawings:

- [1/4-40 TOGGLE SWITCH BOOT SEAL](#) (PDF, English)

#### Catalog Pages/Data Sheets:

- None Available

#### Product Specifications:

- None Available

#### Application Specifications:

- None Available

#### Instruction Sheets:

- None Available

#### CAD Files:

- None Available

[List all Documents](#)

#### Related Products:

- [Tooling](#)

### Product Features (Please use the Product Drawing for all design activity)

#### Product Type Features:

- Accessory Type = Toggle Switch Boot Seal
- Thread Size = 1/4-40
- Color = Black

#### Configuration Features:

- Used With Switch Type = Toggle Switch

#### Industry Standards:

- [RoHS/ELV Compliance](#) = RoHS compliant, ELV compliant
- [Lead Free Solder Processes](#) = Not relevant for lead free process
- RoHS/ELV Compliance History = Always was RoHS compliant

#### Other:

- Brand = Alcoswitch

### Corporate Information

[About TE](#)  
[Investors](#)  
[News Room](#)  
[Supplier Portal](#)

### Quick Links

[Distributor Inventory](#)  
[Product Cross Reference](#)  
[Documents & Drawings](#)  
[Product Compliance Support Center](#)

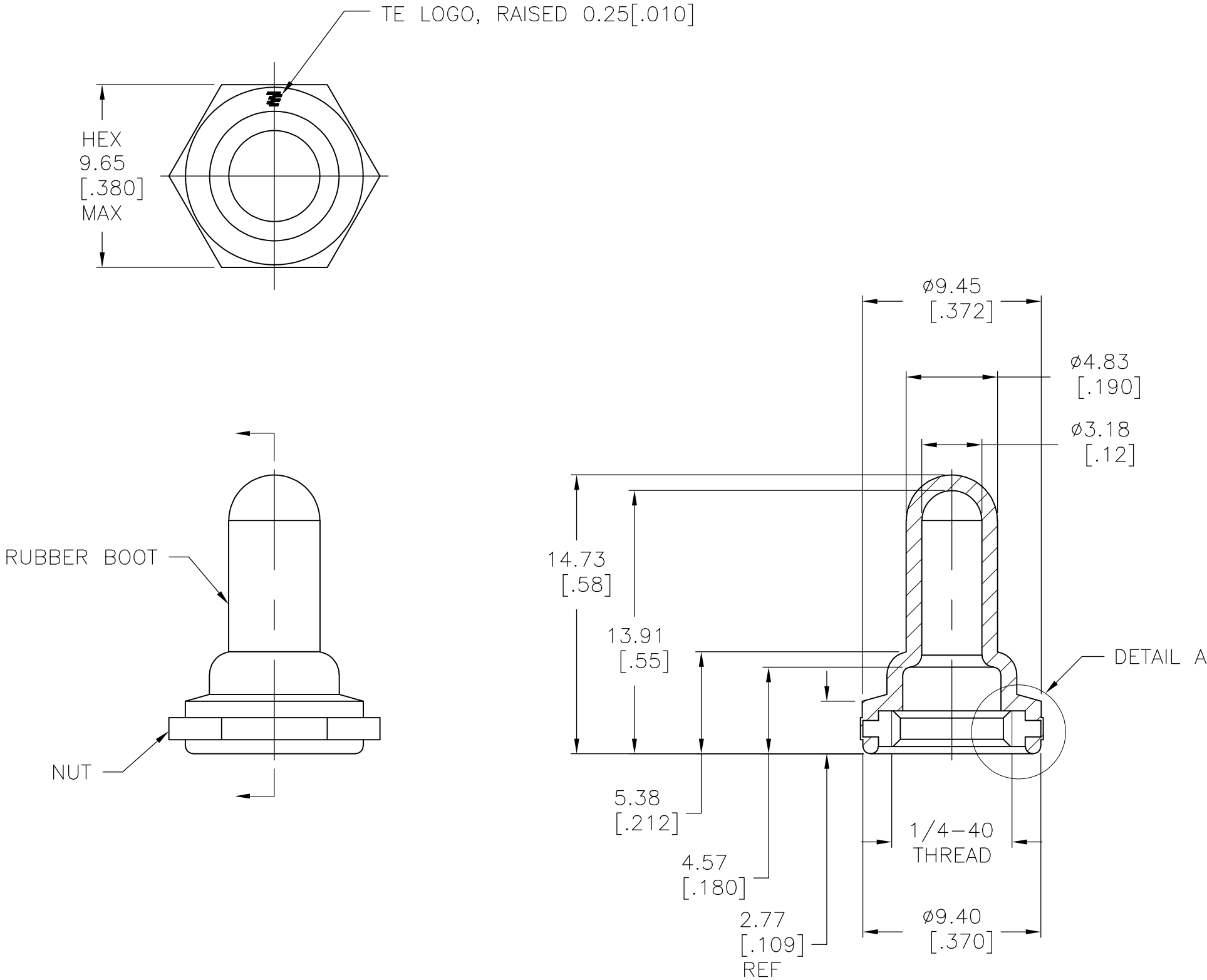
### Customer Support


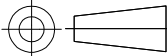
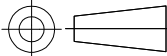
[Email or Chat With Us](#)  
[Find a Phone Number](#)  
[Knowledge Base](#)  
[Manage Your Account](#)

LOC —	DIST —	REVISIONS					
		P	LTR	DESCRIPTION	DATE	DWN	APVD
			B	REVISED PER ECO-07-029260	1/22/08	SS	MW

NOTES:

1. ALL COLORS AND MATERIALS MADE FROM ONE TOOL.
2. SOME DIMENSIONS MAY VARY DUE TO DIFFERENT COMPOUND SHRINKAGE FACTOR.
3. MINOR FLASH ACCEPTABLE ON INSERT THREAD.
4. BLACK FINISH/NICKEL PLATING ON INSIDE THREADS REMOVED DUE TO MOLDING PROCESS PERMITTED.
5. RUBBER TO METAL BOND MUST MEET OR EXCEED THE TEAR STRENGTH OF RUBBER.
6. RUBBER OVERLAY PERMISSIBLE OVER HEX FLATS AS SHOWN IN THE DRAWING.
7. COMPONENTS MUST COMPLY WITH THE EUROPEAN DIRECTIVE 2002/95/EC ON RESTRICTION OF THE USE OF CERTAIN HAZARDOUS SUBSTANCES IN ELECTRICAL AND ELECTRONIC EQUIPMENT (ROHS DIRECTIVE).



SILICONE, COLOR: GRAY		BRASS, NICKEL PLATE PER QQ-N-290		B1440804		1825612-3				
SILICONE, COLOR: RED		BRASS, NICKEL PLATE PER QQ-N-290		B1440204		1825612-2				
SILICONE, COLOR: BLACK		BRASS, BLACK OXIDE PER MIL-F-495		B1440004		1825612-1				
RUBBER BOOT MATERIAL		HEX NUT MATERIAL		ALCO NUMBER		PART NUMBER				
THIS DRAWING IS A CONTROLLED DOCUMENT.		DWN S SCHLEGEL 22JAN2008		 Tyco Electronics Corporation Harrisburg, PA 17105-3608						
DIMENSIONS: mm [INCHES]		CHK M WILBOURN 1/22/08								
		APVD M WILBOURN 1/22/08		NAME  1/4-40 TOGGLE SWITCH BOOT SEAL						
		PRODUCT SPEC  —								
		APPLICATION SPEC  —		SIZE		CAGE CODE	DRAWING NO	RESTRICTED TO		
		MATERIAL		WEIGHT		A2 00779		C=1825612	—	
FINISH		CUSTOMER DRAWING		SCALE		4:1	SHEET	1 of 1	REV	B