



| PRIMARY SELECTION CRITERIA |

Amps:	52A
Volts:	600V
Wire Size:	Max: #10 AWG (4 mm ²) Min: #20 AWG (0.75 mm ²)
Temperature:	Max: 221°F (105°C) Min: -4°F (-20°C)
Configurations:	Inline, Wire - to - Wire
Main Features:	<ul style="list-style-type: none"> • Touch Safe Housing • Color-Coded Mechanical Keys • Compact & Ergonomic Housing • UL Hot Plug Rated to 45A, 72V

See Page 3 for Detailed Specifications

| ORDERING INFORMATION |

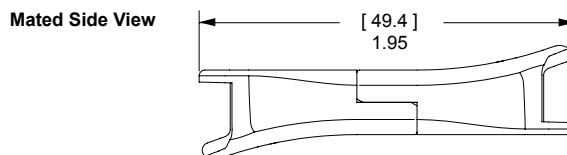
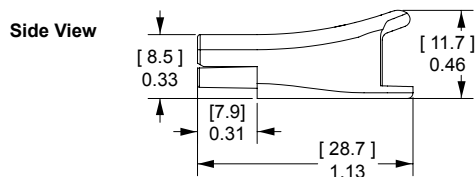
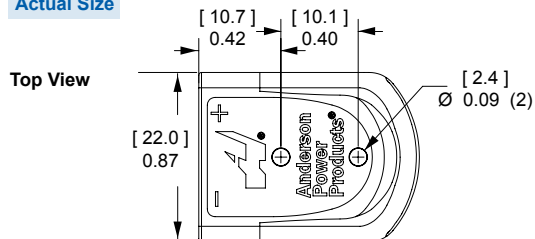
SBS™ Mini Housing

The smallest SBS™ connector has 2 finger proof positions in a polycarbonate housing with an ergonomic grip. The housing securely holds crimp and poke contacts from the popular Powerpole® 15-45 series connectors.

Description	- Part Numbers -
Minimum Quantity ...	100
Red	B02265G1
Gray	B02265G4
Blue	B02265G3
Black	B02265G2



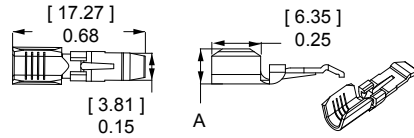
Actual Size



PP15-45 Tin Plated Power Contacts

Offer cost effective performance up to 200 mating cycles. See specifications and temperature charts for amperage ratings by wire size.

Barrel	AWG	mm ²	Loose Piece		Reeled		Dimensions - A -	
			----- Part Numbers -----		----- Part Numbers -----		inches	mm
Minimum Quantity			200	5,000			
Open	14 to 10 K*	2.1 to 5.3	261G2-LPBK	261G2	0.20	5.08		
Open	16 to 12	1.3 to 3.3	261G1-LPBK	261G1	0.18	4.57		
Open	20 to 16	0.52 to 1.3	262G1-LPBK	262G1	0.16	4.06		



K* - For #10 AWG class K stranded wire or smaller.

PP15-45 Silver Plated Power Contacts

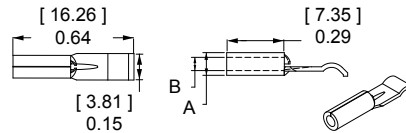
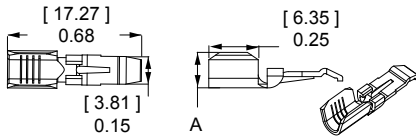
Maximize performance by offering up to 1,500 mating cycles. Recommended for circuit interrupt or hot plug applications. See specifications and temperature charts for amperage ratings by wire size. Only closed barrel contacts are suitable for soldering.

Barrel	AWG	mm ²	Loose Piece		Reeled - Part Numbers -	Dimensions					
			----- Part Numbers -----			- A -		- B -			
					inches		mm				
Minimum Quantity			5,000	200	5,000					
Open	14 to 10 K*	2.1 to 5.3	-	261G3-LPBK	261G3	0.20	5.08	-	-	-	-
Open	20 to 16	0.52 to 1.3	-	262G2-LPBK	262G2	0.16	4.06	-	-	-	-
Closed	16 to 12	1.3 to 3.3	1331-BK	1331	-	0.15	3.81	0.10	2.54		
Closed	20 to 16	0.52 to 1.3	1332-BK	1332	-	0.12	3.05	0.07	1.78		

K* - For #10 AWG class K stranded wire or smaller.

Open Barrel Contact

Closed Barrel Contact



Need More Than 2 Positions?

See the stackable Powerpole® 15 to 45 connectors. These single position connectors use the same contact system as SBS® Mini and can be stacked together to create custom multiple position configurations.

SBS™ MINI SPECIFICATIONS |

Electrical

Current Rating Amperes ¹	UL 1977	CSA
10 AWG	52	35
12 AWG	41	28
14 AWG	31	23
16 AWG	24	16
18 AWG	20	15

Voltage Rating AC/DC	UL 1977
UL 1977	600

Dielectric Withstanding Voltage	Volts AC
Dielectric Withstanding Voltage	2,200

Avg. Mated Contact Resistance Milliohms ²	Wire Contact with 5/8" of #16 AWG	Wire Contact with 5/8" of #12 AWG	Wire Contact with 5/8" of #10 AWG
Avg. Mated Contact Resistance Milliohms ²	0.875	0.600	0.525

UL Hot Plug Current Rating Amperes ³	250 cycles at 72V DC
UL Hot Plug Current Rating Amperes ³	45A

Mechanical

Wire Size Range	AWG	mm ²
Wire Size Range	20 to 10	0.75 to 4.0

Max. Wire Insulation Diameter	in.	mm
Max. Wire Insulation Diameter	0.183	4.65

Operating Temperature	°F	°C
Operating Temperature	-4° to 221°	-20° to 105°

Mating Cycles No Load by Plating	Silver (Ag)	Tin (Sn)
Mating Cycles No Load by Plating	1,500	200
	8,000	200

Avg. Mating / Unmating Force ⁴	Lbf.	N
Avg. Mating / Unmating Force ⁴	10 to 11	45 to 49
	4 to 7	17 to 31

Min Contact / Spring Retention Force	Lbf.	N
Min Contact / Spring Retention Force	20	90

Materials

Housing	
Plastic Resin	Polycarbonate
Contact Retention Spring	Stainless Steel

Housing Flammability Rating	
UL94	V-0

Contact	
Base	Copper Alloy
Plating	Tin or Silver

Contact Termination Methods	
Crimp ³	Wire Contacts
Hand Solder	1331 & 1332

Protection

Touch Safety	
UL 1977 Sec. 10.2	Pass
IEC 60950	Pass
IEC 60529	IP20



Inquire with Customer Service for IEC / EN Approvals

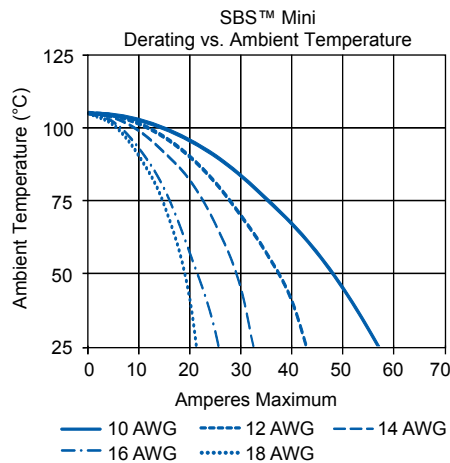
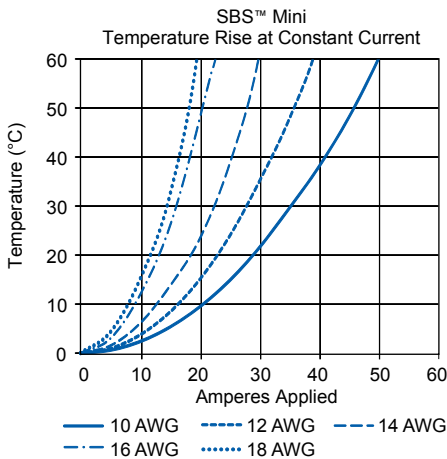
¹ Based on: 105°C rated or better cable of the largest size. Properly calibrated APP® recommended tooling, and a 25°C ambient temperature. UL rating not to exceed the maximum operating temperature. CSA rating below a 30°C temperature rise.

² Use APP® recommended tooling only. Alternate tools may adversely affect the performance of our connectors along with UL and CSA recognition.

³ Based on 261G3 with 10 AWG wire.

⁴ Contact customer service for contacts with a higher disconnect force.

| TEMPERATURE CHARTS |



NOTE: Temperature rise charts are based on a 25°C ambient temperature.

| TOOLING INFORMATION | (See Tooling Family Data Sheet for Additional Details)

Wire Size		Loose Piece Part Numbers			Reeled Part Numbers		Reeled Contact Crimp Tools				
AWG	mm ²	Tin Plating	Silver Plating	Hand Tool or	Tin Plating	Silver Plating	APP Applicator	APP Press	ATS Applicator	ATS Press	Air Feed Kit*
16 / 20	1.3 / 0.52	N/A	1332	1309G2 or 1309G8	N/A	N/A	N/A	N/A	N/A	N/A	N/A
12 / 16	3.3 / 1.3	N/A	1331		262G1	262G2	TD0101	115V = TE0101 230V = TE0102	1385519-1	1725900-2	1424266-1
16 / 20	1.3 / 0.52	262G1-LPBK	262G2-LPBK	261G1	N/A	1385520-1					
12 / 16	3.3 / 1.3	261G1-LPBK	N/A	261G2	261G3	1385458-1					
10 / 14	5.3 / 2.1	261G2-LPBK	261G3-LPBK	1309G3 or 1309G8							

* All ATS applicators for APP® contacts are air feed style, and require the press to have an air feed kit installed.

NOTE: Insertion / Extraction tool for SBS™ Mini contact = 111038G2

| 1309 Series Hand Tools

This high quality hand tool is designed for crimping wires for Anderson connectors. The extra long bright yellow handles provide significant crimping force while minimizing operator fatigue. Full cycle ratchet mechanism makes sure every crimp is fully completed. All tools for SBS mini include a plastic locator piece that ensures proper positioning of the contacts for crimping.

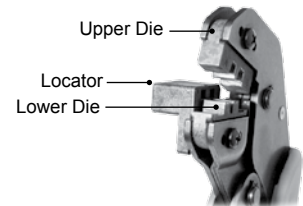
1309G2: For crimping PP15/45 loose piece strip contacts and individual contacts.

#16 – 20 AWG (1.3 – 0.5 mm²)

#12 – 20 AWG (3.3 – 1.3 mm²)



1309



1309G3: For crimping PP15/45 loose piece strip contacts.

#10 – 16 AWG (5.3 – 1.3 mm²)

1309G8: Includes 1 tool frame with the appropriate dies and locators to make the 1309G2, 1309G3 and 1309G6 tools. Dies and locators are color coded for easy identification and pairing. This combination allows the entire PP15/45 contact range to be crimped with one tool kit.

| Press and Applicator Tools

Press and Applicator tooling is available for high volume automated or semi-automated crimp termination of APP® reeled contacts. All applicators have been designed to meet or exceed UL requirements.



TD0101 Applicator for PP15/45 #10-20 AWG Contacts



TE0101 & TE0102 Press for Mini-Style Applicators

| Insertion & Extraction Tool



111038G2 Recommended for insertion of #16 AWG (mm²) wires or smaller. Required for contact removal.

All Data Subject To Change Without Notice

DS-SBSMINI REV 0

© 2015 Anderson Power Products, Inc. All rights reserved. APP® and the APP Logo are registered trademarks of Anderson Power Products, Inc.

HEADQUARTERS: Anderson Power Products®, 13 Pratts Junction Road, Sterling, MA 01564-2305 USA T:978-422-3600 F:978-422-0128 • **EUROPE:** Anderson Power Products® Ltd., Unit 3, Europa Court, Europa Boulevard, Westbrook, Warrington, Cheshire, WA5 7TN United Kingdom T: +44 (0) 1925 428390 F: +44 (0) 1925 520203 • **ASIA / PACIFIC:** IDEAL Anderson Asia Pacific Ltd., Unit 922-928 Topsail Plaza, 11 On Sum Street, Shatin N.T., Hong Kong T: +(852) 2636 0836 F: +(852) 2635 9036 • **CHINA:** IDEAL Anderson Technologies (Shenzhen) Ltd., Block A8 Tantou Western Industrial Park, Songgang Baoan District, Shenzhen, P.R. China 518105 T: +(86) 755 2768 2118 F: +(86) 755 2768 2218 • **TAIWAN:** IDEAL Anderson Asia Pacific Ltd., Taiwan Branch, 4F.-2, No.116, Dadun 20th St., Situn District, Taichung City 407, Taiwan (R.O.C.) T: +(886) 4 2310 6451 F: +(886) 4 2310 6460 • www.andersonpower.com