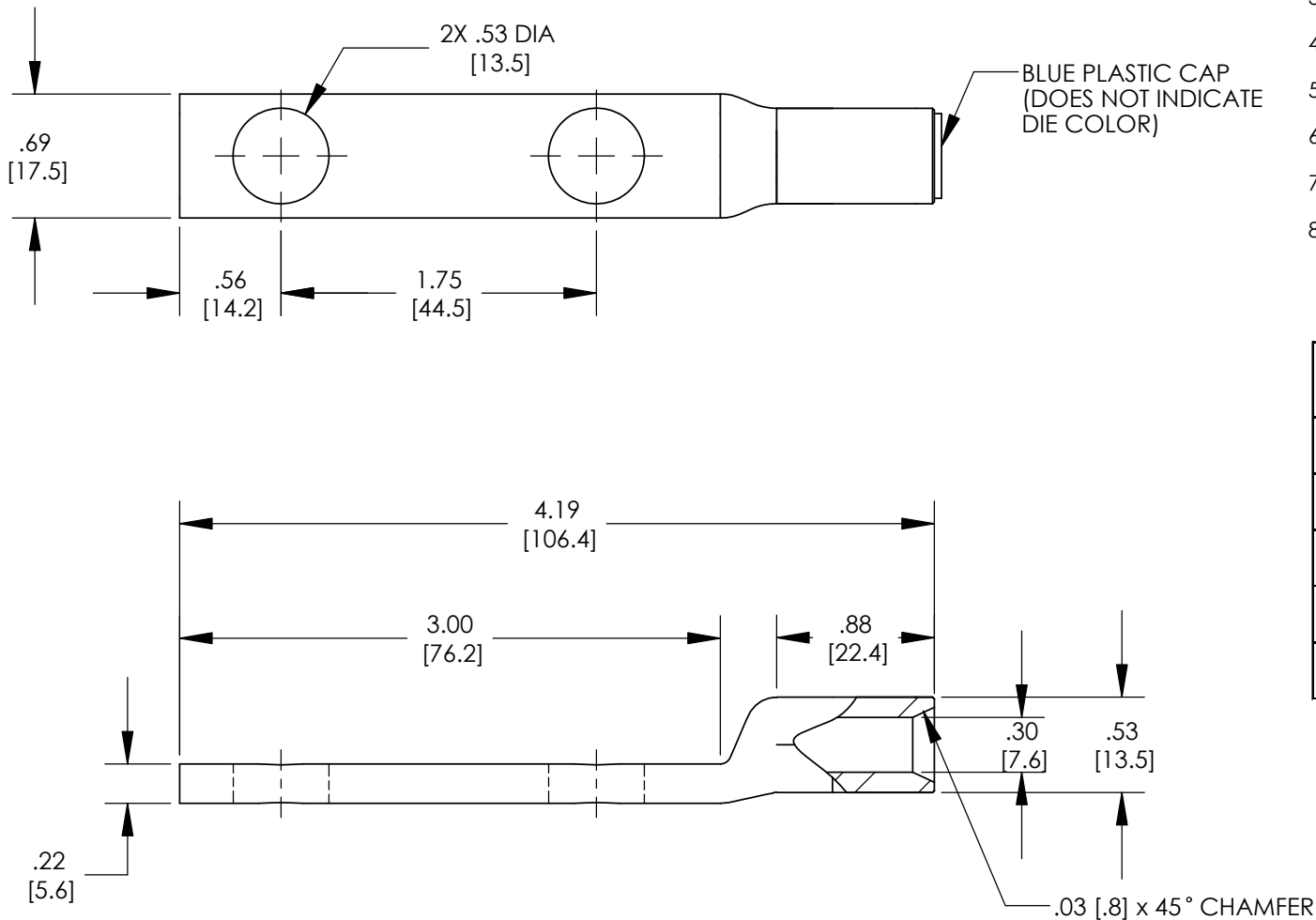


- NOTES:
- 1. DIMENSIONS IN PARENTHESIS ARE MILLIMETERS.
  - 2. FOR USE WITH STRANDED ALUMINUM/COPPER WIRE ONLY.
  - 3. MATERIAL: ALUMINUM, TIN PLATED
  - 4. STUD SIZE: 1/2"
  - 5. WIRE SIZE: 2 AWG
  - 6. PREFILLED WITH ANTI-OXIDANT PASTE.
  - 7. ALL DIMENSIONS SHOWN ARE NOMINAL.
  - 8. PACKAGE QUANTITY: -X = 10



DIE COLOR CODE	PINK
TDY-1 PRESSURE SETTING	2
BURNDY DIE INDEX OR "U" DIE	B-348
HUSKIE/PUC DIE SET	HT41GF
T&B DIE INDEX	TBM-5
PUC MECHANICAL TOOLS	TDM-250 TDM-500

C41725\_02

02	9/07	JHNU	LEM	REVISED NOTE 1: REMOVED UL AND CSA REFERENCE REMOVED UL AND CSA LOGOS FROM DRAWING					<b>PANDUIT CORP. TINLEY PARK, ILLINOIS</b>  ALUMINUM LUG (BLUA2D-X) CUSTOMER DRAWING			
01	8/07	JHNU	LEM	ADDED CRIMPING INFORMATION TABLE								
00	8/07	JHNU	LEM	DRAWING RELEASED								
REV	DATE	BY	CHK	DESCRIPTION	ECN	PM	APP	DRAWN BY	CHK'D	SCALE	DRAWING NO / CAD FILE	
								JHNU		NONE	C41725	