



# SAW Components

Data Sheet B7707, Pb-Free





**SAW Components**

**B7707**

**Low-Loss Filter for Mobile Communication**

**942,50 MHz**

Data Sheet



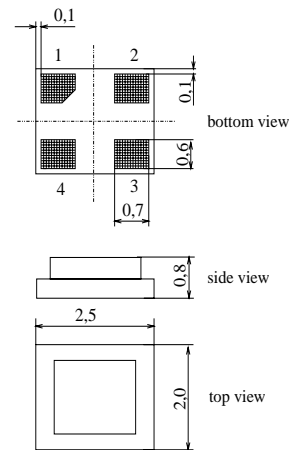
**Chip Sized SAW Package DCS4H**

**Features**

- Low-loss RF filter for mobile telephone EGSM systems, receive path
- Low amplitude ripple
- Usable passband 35 MHz
- No matching network required for operation at 50 Ω
- Suitable for GPRS class 1 to 12
- Package for **Surface Mounted Technology (SMT)**
- Pb-Free

**Terminals**

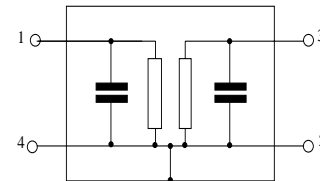
- Ni, gold-plated



Dimensions in mm, approx. weight 0,015g

**Pin configuration**

- 1 Input
- 3 Output
- 2,4 Ground



Type	Ordering code	Marking and Package according to	Packing according to
B7707	B39941-B7707-K710	C61157-A7-A136	F61074-V8189-Z000

Electrostatic Sensitive Device (ESD)

**Maximum ratings**

Operable temperature range	$T$	- 40 / + 85	°C	Machine Model, 10 pulses peak power of GSM signal, duty cycle 4:8
Storage temperature range	$T_{stg}$	- 40 / + 85	°C	
DC voltage	$V_{DC}$	3	V	
ESD voltage	$V_{ESD}^*$	100*	V	
Input power at GSM850, GSM900, GSM1800 and GSM1900 Tx bands	$P_{IN}$	15	dBm	

\* - acc. to JESD22-A115A (Machine Model), 10 negative & 10 positive pulses



**Characteristics**

Operating temperature range:  $T = 25 \pm 2 \text{ }^\circ\text{C}$   
 Terminating source impedance:  $Z_S = 50 \text{ } \Omega$   
 Terminating load impedance:  $Z_L = 50 \text{ } \Omega$

			min.	typ.	max.	
<b>Center frequency</b>	$f_c$		—	942,5	—	MHz
<b>Maximum insertion attenuation</b>	$\alpha_{max}$					
	925,0 ... 960,0	MHz	—	2,8	3,3	dB
<b>Amplitude ripple (p-p)</b>	$\Delta\alpha$					
	925,0 ... 960,0	MHz	—	1,0	1,6	dB
<b>Input VSWR</b>						
	925,0 ... 960,0	MHz	—	2,0	2,3	
<b>Output VSWR</b>						
	925,0 ... 960,0	MHz	—	2,0	2,2	
<b>Input return loss</b>						
	925,0 ... 960,0	MHz	8,0	9,0	—	dB
<b>Input return loss phase</b>						
	1842,5	MHz	-150,0	-140,0	-130,0	°
<b>Attenuation</b>	$\alpha$					
	0,0 ... 750,0	MHz	50	66	—	dB
	750,0 ... 800,0	MHz	46	69	—	dB
	800,0 ... 880,0	MHz	45	54	—	dB
	880,0 ... 905,0	MHz	31	60	—	dB
	905,0 ... 915,0	MHz	17	33	—	dB
	980,0 ... 982,0	MHz	23	26	—	dB
	982,0 ... 1005,0	MHz	23	29	—	dB
	1005,0 ... 1025,0	MHz	30	52	—	dB
	1025,0 ... 1035,0	MHz	35	54	—	dB
	1035,0 ... 1760,0	MHz	40	55	—	dB
	1760,0 ... 3120,0	MHz	34	38	—	dB
	3120,0 ... 4000,0	MHz	18	26	—	dB
	4000,0 ... 6000,0	MHz	8	18	—	dB



SAW Components

B7707

Low-Loss Filter for Mobile Communication

942,50 MHz

Data Sheet



**Characteristics**

Operating temperature range:  $T = -20^{\circ}\text{C}$  to  $+75^{\circ}\text{C}$   
 Terminating source impedance:  $Z_S = 50\ \Omega$   
 Terminating load impedance:  $Z_L = 50\ \Omega$

			min.	typ.	max.	
<b>Center frequency</b>	$f_C$		—	942,5	—	MHz
<b>Maximum insertion attenuation</b>	$\alpha_{\max}$	925,0 ... 960,0 MHz	—	3,0	3,5	dB
<b>Amplitude ripple (p-p)</b>	$\Delta\alpha$	925,0 ... 960,0 MHz	—	1,2	1,8	dB
<b>Input VSWR</b>		925,0 ... 960,0 MHz	—	2,0	2,3	
<b>Output VSWR</b>		925,0 ... 960,0 MHz	—	2,0	2,2	
<b>Input return loss</b>		925,0 ... 960,0 MHz	8,0	9,0	—	dB
<b>Input return loss phase</b>		1842,5 MHz	-150,0	-140,0	-130,0	°
<b>Attenuation</b>	$\alpha$					
		0,0 ... 750,0 MHz	50	66	—	dB
		750,0 ... 800,0 MHz	46	69	—	dB
		800,0 ... 880,0 MHz	45	54	—	dB
		880,0 ... 905,0 MHz	31	60	—	dB
		905,0 ... 915,0 MHz	17	24	—	dB
		980,0 ... 982,0 MHz	22	25	—	dB
		982,0 ... 1005,0 MHz	23	27	—	dB
		1005,0 ... 1025,0 MHz	30	52	—	dB
		1025,0 ... 1035,0 MHz	35	54	—	dB
		1035,0 ... 1760,0 MHz	40	55	—	dB
		1760,0 ... 3120,0 MHz	34	38	—	dB
		3120,0 ... 4000,0 MHz	18	26	—	dB
		4000,0 ... 6000,0 MHz	8	18	—	dB



**Characteristics**

Operating temperature range:  $T = -30^{\circ}\text{C}$  to  $+80^{\circ}\text{C}$   
 Terminating source impedance:  $Z_S = 50\ \Omega$   
 Terminating load impedance:  $Z_L = 50\ \Omega$

		min.	typ.	max.	
<b>Center frequency</b>	$f_C$	—	942,5	—	MHz
<b>Maximum insertion attenuation</b>	$\alpha_{\max}$				
	925,0 ... 960,0 MHz	—	3,0	4,0	dB
<b>Amplitude ripple (p-p)</b>	$\Delta\alpha$				
	925,0 ... 960,0 MHz	—	1,2	2,3	dB
<b>Input VSWR</b>					
	925,0 ... 960,0 MHz	—	2,0	2,3	
<b>Output VSWR</b>					
	925,0 ... 960,0 MHz	—	2,0	2,2	
<b>Input return loss</b>					
	925,0 ... 960,0 MHz	8,0	9,0	—	dB
<b>Input return loss phase</b>					
	1842,5 MHz	-150,0	-140,0	-130,0	°
<b>Attenuation</b>	$\alpha$				
	0,0 ... 750,0 MHz	50	66	—	dB
	750,0 ... 800,0 MHz	46	69	—	dB
	800,0 ... 880,0 MHz	45	54	—	dB
	880,0 ... 905,0 MHz	31	60	—	dB
	905,0 ... 915,0 MHz	15	23	—	dB
	980,0 ... 982,0 MHz	21	24	—	dB
	982,0 ... 1005,0 MHz	23	27	—	dB
	1005,0 ... 1025,0 MHz	30	52	—	dB
	1025,0 ... 1035,0 MHz	35	54	—	dB
	1035,0 ... 1760,0 MHz	40	55	—	dB
	1760,0 ... 3120,0 MHz	34	38	—	dB
	3120,0 ... 4000,0 MHz	18	26	—	dB
	4000,0 ... 6000,0 MHz	8	18	—	dB



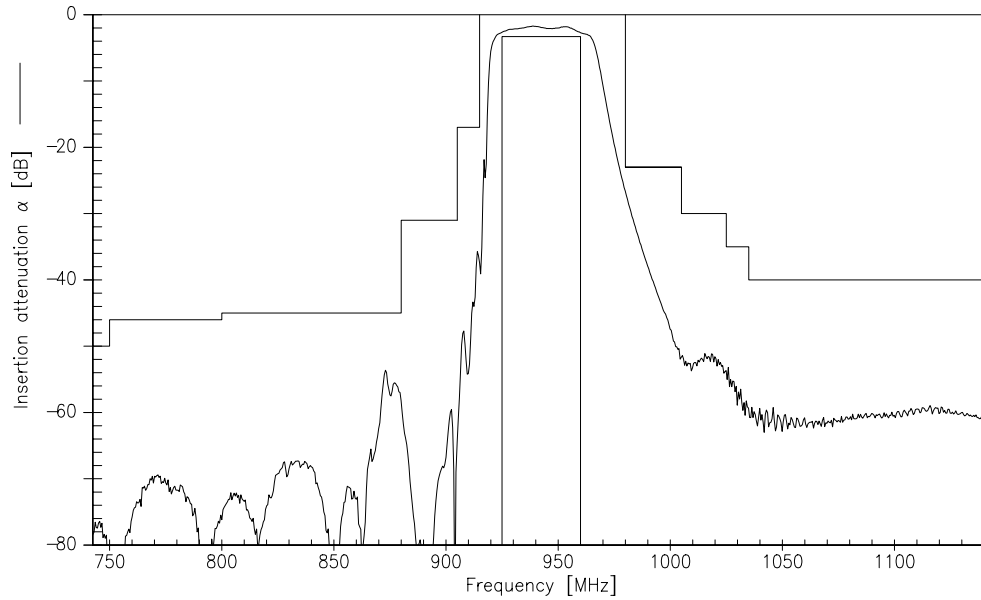
**Characteristics**

Operating temperature range:  $T = -30^{\circ}\text{C}$  to  $+85^{\circ}\text{C}$   
 Terminating source impedance:  $Z_S = 50\ \Omega$   
 Terminating load impedance:  $Z_L = 50\ \Omega$

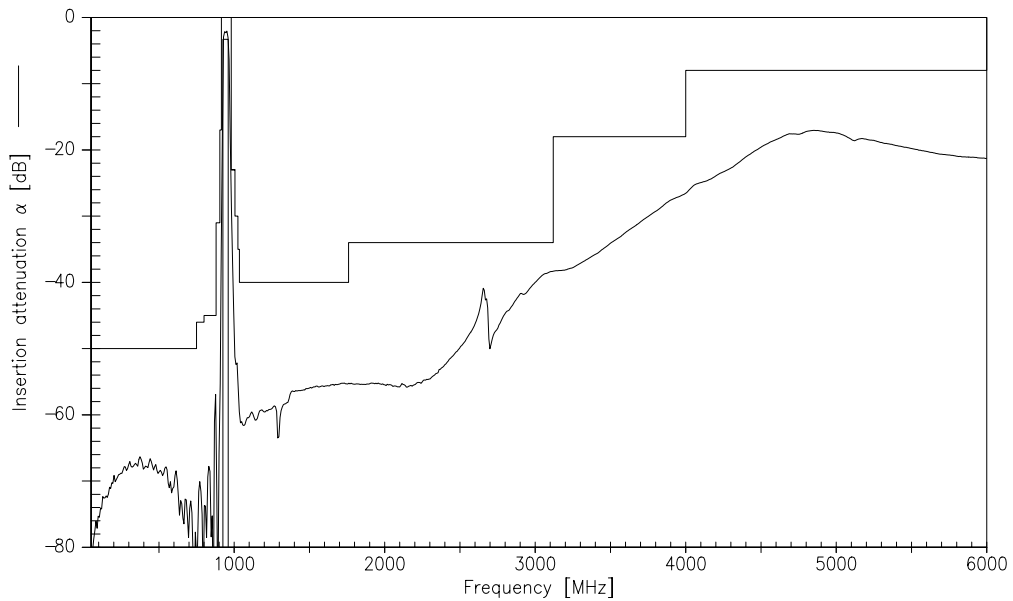
		min.	typ.	max.	
<b>Center frequency</b>	$f_C$	—	942,5	—	MHz
<b>Maximum insertion attenuation</b>	$\alpha_{\max}$				
	925,0 ... 960,0 MHz	—	3,0	4,0	dB
<b>Amplitude ripple (p-p)</b>	$\Delta\alpha$				
	925,0 ... 960,0 MHz	—	1,2	2,3	dB
<b>Input VSWR</b>					
	925,0 ... 960,0 MHz	—	2,0	2,3	
<b>Output VSWR</b>					
	925,0 ... 960,0 MHz	—	2,0	2,2	
<b>Input return loss</b>					
	925,0 ... 960,0 MHz	8,0	9,0	—	dB
<b>Input return loss phase</b>					
	1842,5 MHz	-150,0	-140,0	-130,0	°
<b>Attenuation</b>	$\alpha$				
	0,0 ... 750,0 MHz	50	66	—	dB
	750,0 ... 800,0 MHz	46	69	—	dB
	800,0 ... 880,0 MHz	45	54	—	dB
	880,0 ... 905,0 MHz	31	60	—	dB
	905,0 ... 915,0 MHz	12	22	—	dB
	980,0 ... 982,0 MHz	21	24	—	dB
	982,0 ... 1005,0 MHz	23	27	—	dB
	1005,0 ... 1025,0 MHz	30	52	—	dB
	1025,0 ... 1035,0 MHz	35	54	—	dB
	1035,0 ... 1760,0 MHz	40	55	—	dB
	1760,0 ... 3120,0 MHz	34	38	—	dB
	3120,0 ... 4000,0 MHz	18	26	—	dB
	4000,0 ... 6000,0 MHz	8	18	—	dB



Transfer function (+25 C specification)



Transfer function (wideband)





**SAW Components**

**B7707**

**Low-Loss Filter for Mobile Communication**

**942,50 MHz**

Data Sheet



**Published by EPCOS AG**  
**Surface Acoustic Wave Components Division, SAW MC PD**  
**P.O. Box 80 17 09, D-81617 München**

© EPCOS AG 2005. All Rights Reserved. Reproduction, publication and dissemination of this brochure and the information contained therein without EPCOS' prior express consent is prohibited.

The information contained in this brochure describes the type of component and shall not be considered as guaranteed characteristics. Purchase orders are subject to the General Conditions for the Supply of Products and Services of the Electrical and Electronics Industry recommended by the ZVEI (German Electrical and Electronic Manufacturers' Association), unless otherwise agreed.

This brochure replaces the previous edition.

For questions on technology, prices and delivery please contact the Sales Offices of EPCOS AG or the international Representatives.

Due to technical requirements components may contain dangerous substances. For information on the type in question please also contact one of our Sales Offices.