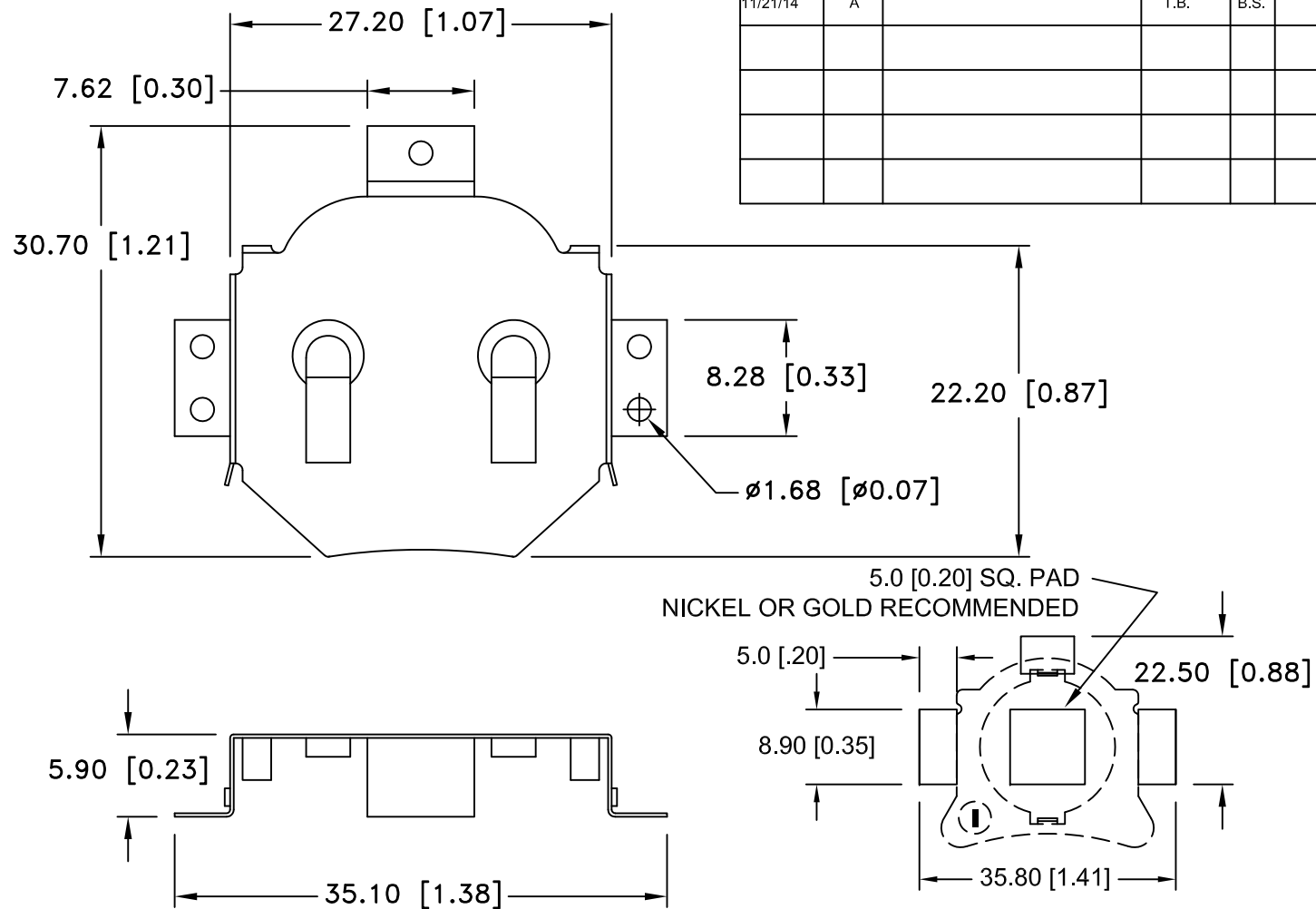



| Date | SYM | REVISION RECORD | AUTH | DR. | CK. |
|----------|-----|-----------------------------|------|------|-----|
| 11/21/14 | A | UPDATED TO ROHS 2 COMPLIANT | T.B. | B.S. | |
| | | | | | |
| | | | | | |
| | | | | | |



PCB LAYOUT

SPECIFICATIONS:

- * Contacts : Phosphor Bronze C5191, Nickel Plated 80-150u thickness
- * Vibration test: 10-50-10 hz swept in 60 seconds
x,y,z direction: 1 hour each direction
- * Result: no dislodgement of the cell or damage
no discontinuity over 10 micro-seconds
- * Shock test: half sine wave acceleration 150g.
6 micro-seconds 3 shock pulses each direction per axis,
total of 18 pulses
- * Result: no evidence of physical damage
- * ROHS 2 COMPLIANT

| | | | |
|--------------------------------|--|--------------------------------|-----------------------------------|
| Tolerance (Except as noted) |  <div>Memory Protection Devices, Inc 200 Broad Hollow Road, Farmingdale, New York 11735</div> | | |
| decimal $\pm .5$ (.020) | | Scale | Drawn By B.S. Approved By T.B. |
| Fractional $\pm .8$ (.030) | Title CR2450 BATTERY RETAINER WITH INSULATOR | | |
| Angular $\pm 3^\circ$ | Date 11/21/14 | Drawing Number BRX1-2450-SM | |