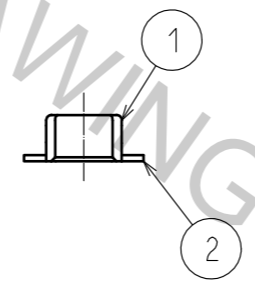
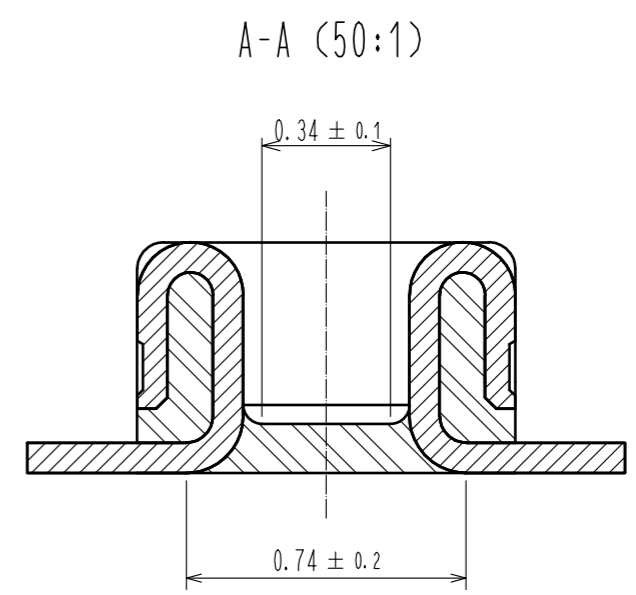
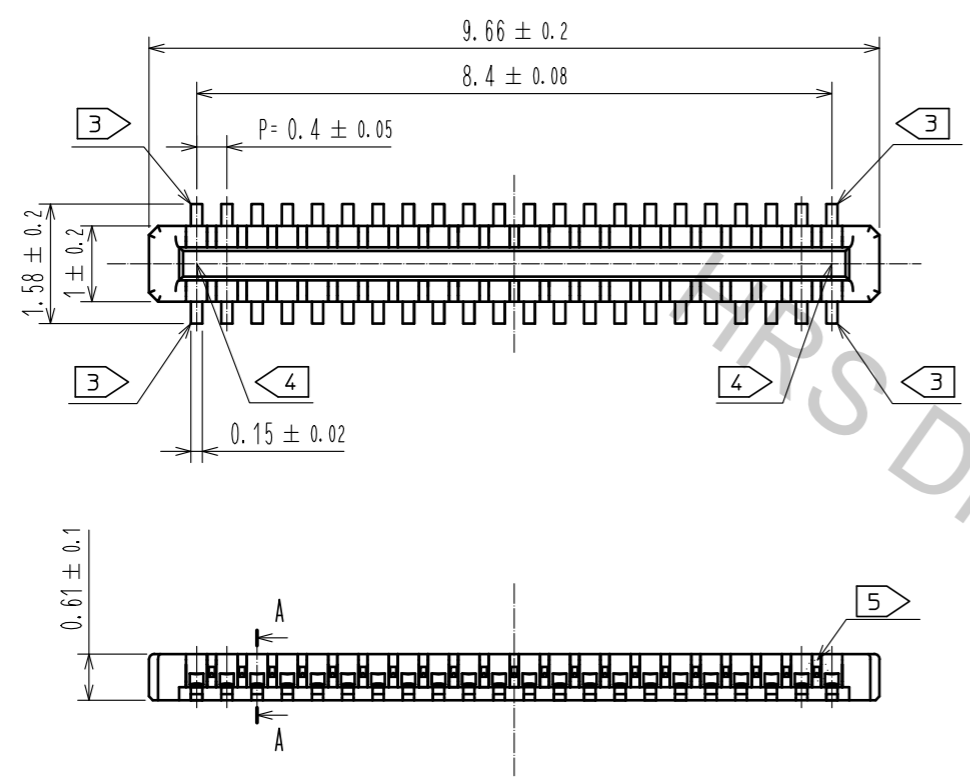
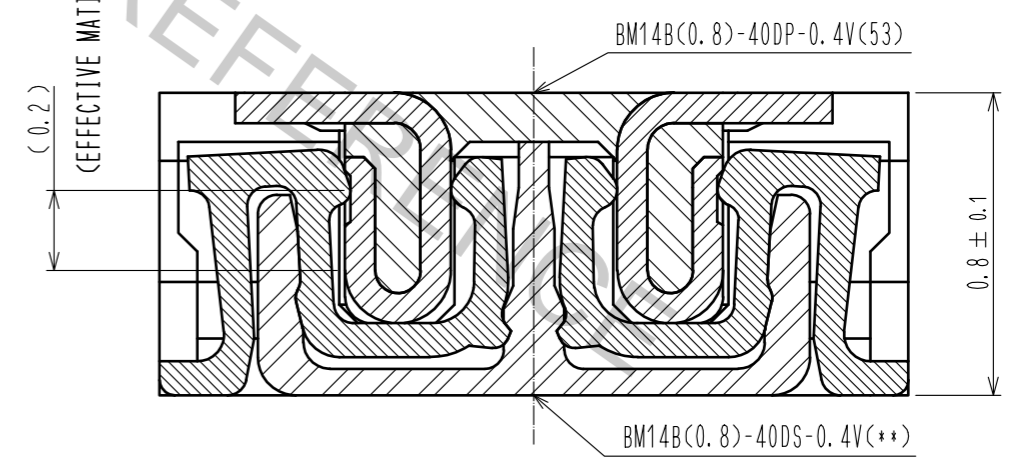


Feb.1.2017 Copyright 2017 HIROSE ELECTRIC CO., LTD. All Rights Reserved.



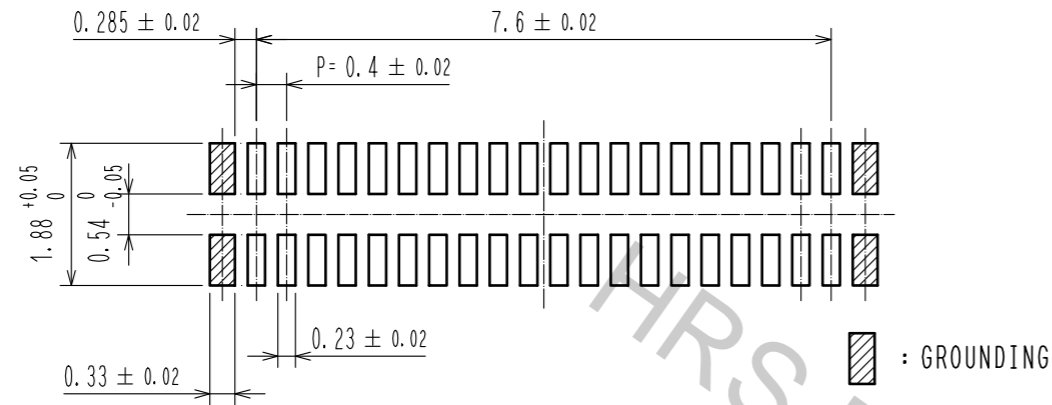
ENGAGEMENT FIGURE (50:1)



- NOTE) 1 . ALL LEAD CO-PLANARITY SHALL BE 0.08mm MAX  
 2 . CONTACT PLATING SPECIFICATIONS  
 CONTACT AREA : GOLD 0.05 μm MIN  
 SMT LEAD : GOLD 0.05 μm MIN  
 UNDERPLATING : NICKEL 1 μm MIN  
 ( SURFACE : SEALING )  
 3 . EACH CONTACTS AT 4 CORNERS ARE PROVIDED FOR METAL FITTINGS AND GROUNDING PURPOSE.  
 4 . HRS MARK AND CAV No. ARE INDICATED IN APPROX POSITION SHOWN.  
 5 . A PART OF THE WALL COULD BE NOTCHED.

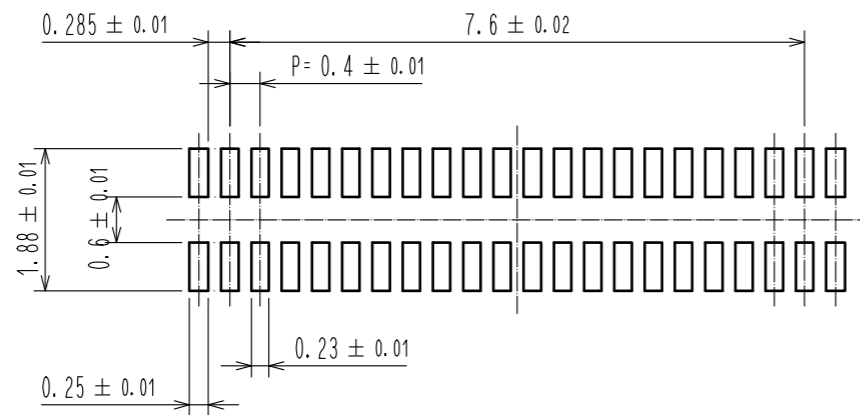
| 3                                    | PS              | CLEAR (ENBOSSED CARRIER TAPE) | 6        | PS                                | CLEAR (REINFORCEMENT COLLAR) |          |         |      |
|--------------------------------------|-----------------|-------------------------------|----------|-----------------------------------|------------------------------|----------|---------|------|
| 2                                    | PHOSPHOR BRONZE | 2                             | 5        | PS                                | BLACK (PLASTIC REEL)         |          |         |      |
| 1                                    | LCP             | UL94 V-0, BLACK               | 4        | POLYESTER                         | CLEAR (COVER TAPE)           |          |         |      |
| NO.                                  | MATERIAL        | FINISH . REMARKS              | NO.      | MATERIAL                          | FINISH . REMARKS             |          |         |      |
| UNITS                                | mm              | SCALE                         | 10 : 1   | COUNT                             | DESCRIPTION OF REVISIONS     | DESIGNED | CHECKED | DATE |
| <b>HRS</b> HIROSE ELECTRIC CO., LTD. |                 | APPROVED : MO. ISHIDA         | 17.01.19 | DRAWING NO. EDC-319850-53-00      |                              |          |         |      |
|                                      |                 | CHECKED : TS. MIYAZAKI        | 17.01.19 | PART NO. BM14B(0.8)-40DP-0.4V(53) |                              |          |         |      |
|                                      |                 | DESIGNED : NY. YAMASHIRO      | 17.01.19 | CODE NO. CL684-8015-4-53          |                              |          |         |      |
|                                      |                 | DRAWN : SN. NUMAZAKI          | 17.01.18 |                                   |                              |          |         |      |

◆ RECOMMENDED PCB LAYOUT

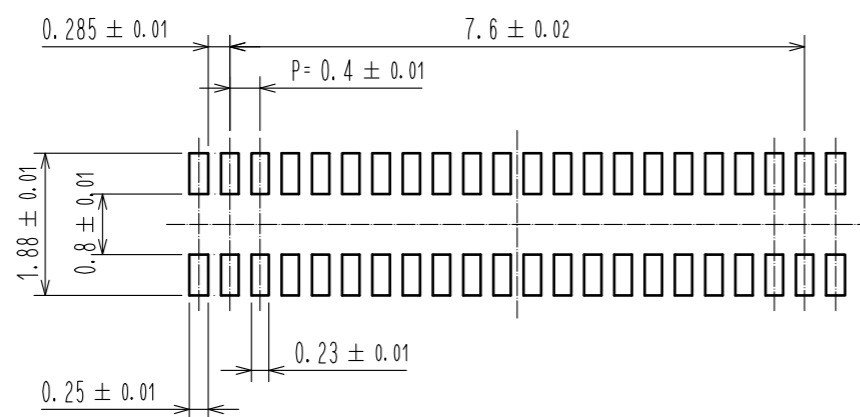


◆ RECOMMENDED METAL MASK DIMENSIONS

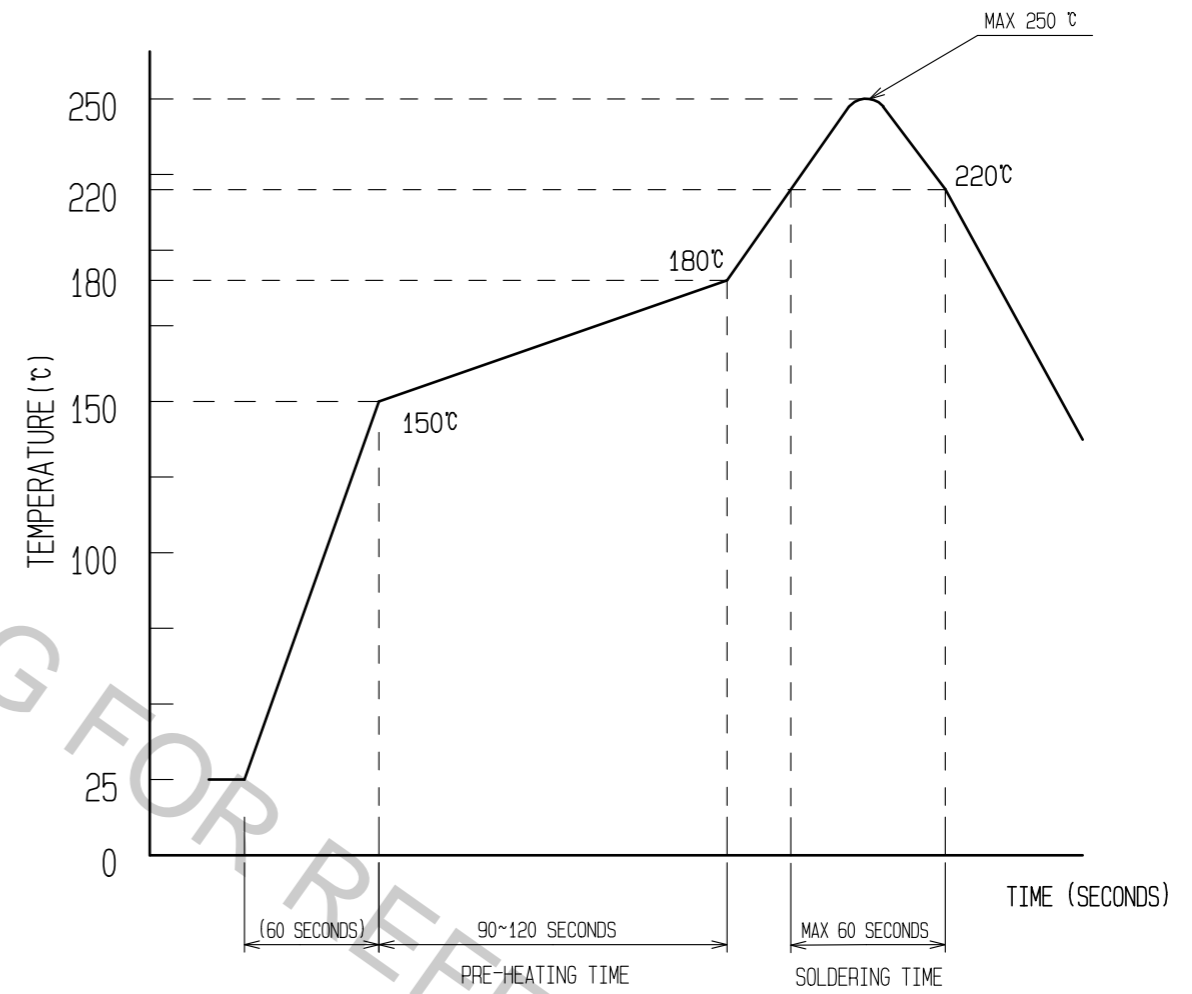
METAL MASK THICKNESS : 100 μm



METAL MASK THICKNESS : 120 μm



⑥ RECOMMENDED REFLOW TEMPERATURE PROFILE USING LEAD-FREE SOLDER PASTE.



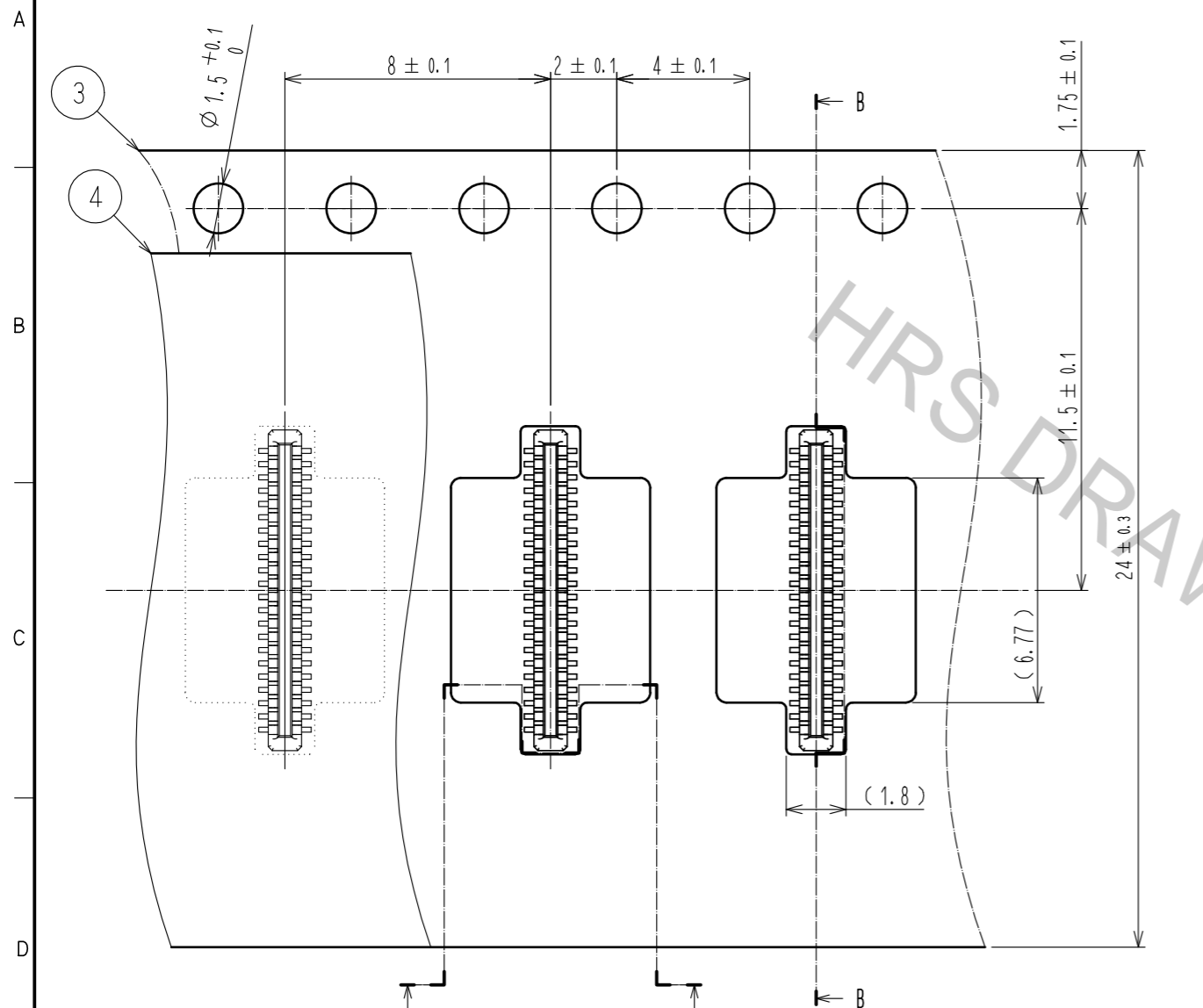
- REFLOW METHOD: IR REFLOW  
 NUMBER OF REFLOW CYCLES: 2 CYCLES MAX.  
 1) REFLOW TIME  
 DURATION ABOVE 220°C, 60 SEC. MAX.  
 (PEAK TEMPERATURE: 250°C MAX)  
 2) PRE-HEAT TIME  
 PRE-HEAT TEMPERATURE(MIN): 150°C  
 PRE-HEAT TEMPERATURE(MAX): 180°C  
 PRE-HEAT TIME: 90-120 sec.

⑥ THIS TEMPERATURE PROFILE IS PER THE CONDITIONS SHOWN ABOVE. ADDITIONAL FACTORS, SUCH AS SOLDER PASTE TYPE, PCB SIZE AND OTHER MOUNTED COMPONENTS COULD AFFECT THE PROFILE, THEREFORE, A THOROUGH EVALUATION OF MOUNTING CONDITION IS REQUIRED PRIOR TO PRODUCTION. TEMPERATURE IS MEASURED AT CONTACT LEAD.

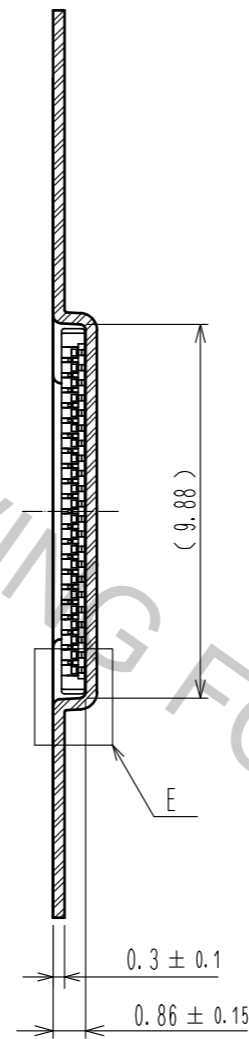
|            |             |                          |
|------------|-------------|--------------------------|
| <b>HRS</b> | DRAWING NO. | EDC-319850-53-00         |
|            | PART NO.    | BM14B(0.8)-40DP-0.4V(53) |
|            | CODE NO.    | CL684-8015-4-53          |
|            |             | 2/3                      |

ENBOSSED CARRIER TAPE PACKAGING (5:1)

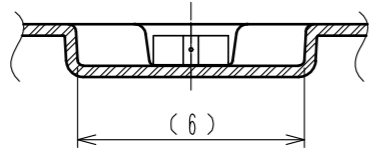
STYLE AND DIMENTION OF REEL (FREE)



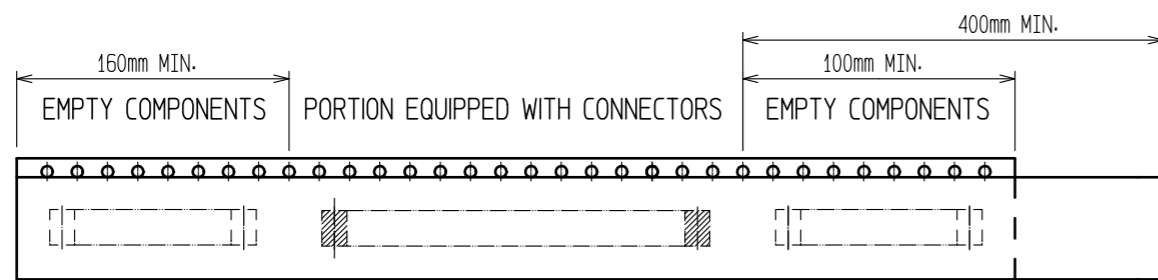
B-B (5:1)



C-C (5:1)



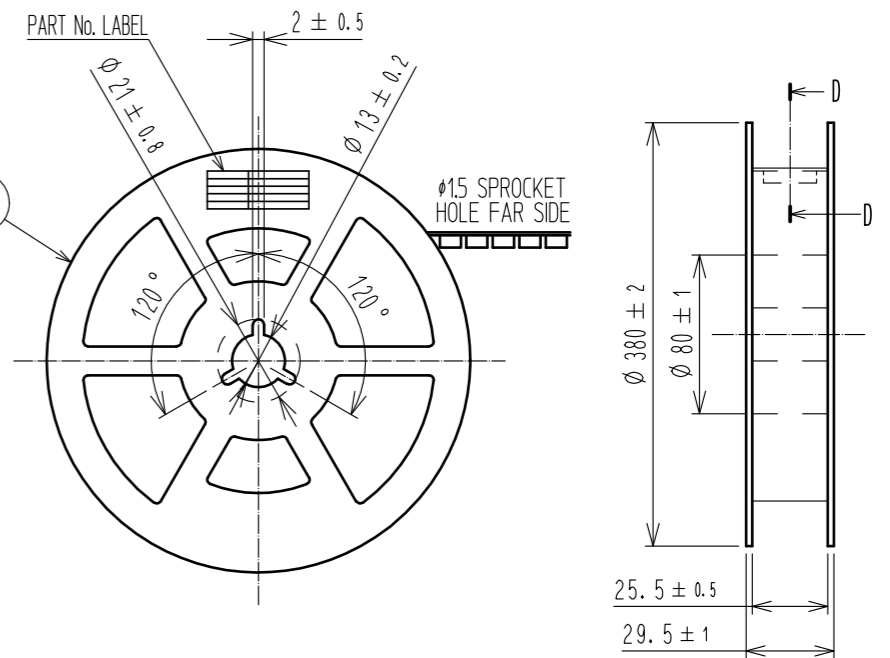
DIRECTION OF UNREELING



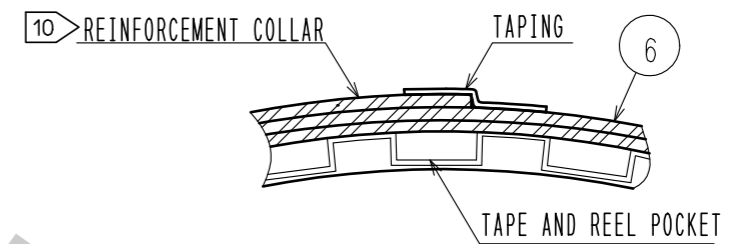
TRAILER

9 TAPING (FREE)

LEADER



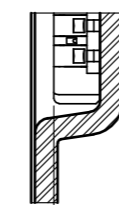
D-D (FREE)



DETAIL OF PART No. LABEL

|                      |                          |
|----------------------|--------------------------|
| SUPPLIER             |                          |
| QUANTITY             |                          |
| PART No.             |                          |
| CODE No.             |                          |
| DATE OF MANUFACTURED |                          |
| 製造年月日                | ** ** *                  |
| 製品コード                | CL684-8015-4-53          |
| 製品名                  | BM14B(0.8)-40DP-0.4V(53) |
| 数量                   | 1,000                    |
| 納入者                  | ヒロセ電機(株)                 |

E(10:1)



- 7. PER REEL 1000 CONNECTORS.
- 8. THE DIMENSIONS IN PARENTHESSES ARE FOR REFERENCE.
- 9. REFER TO JIS C 0806(PACKAGING OF COMPONENTS FOR AUTOMATIC HANDLING)
- 10. AFTER PACKAGING, ROLL 2 METERS OF THE REINFORCEMENT COLLAR TO OUTER CIRCUMFERENCE OF TAPE AND REEL POCKET, AND TAPE DOWN AT THE END THE COLLAR.

|            |             |                          |
|------------|-------------|--------------------------|
| <b>HRS</b> | DRAWING NO. | EDC-319850-53-00         |
|            | PART NO.    | BM14B(0.8)-40DP-0.4V(53) |
|            | CODE NO.    | CL684-8015-4-53          |
|            |             | △ 3/3                    |