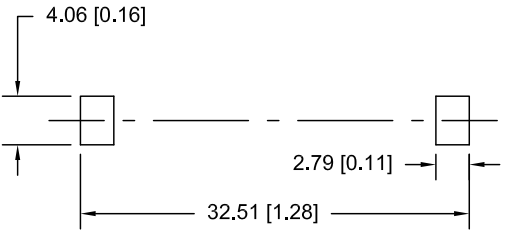
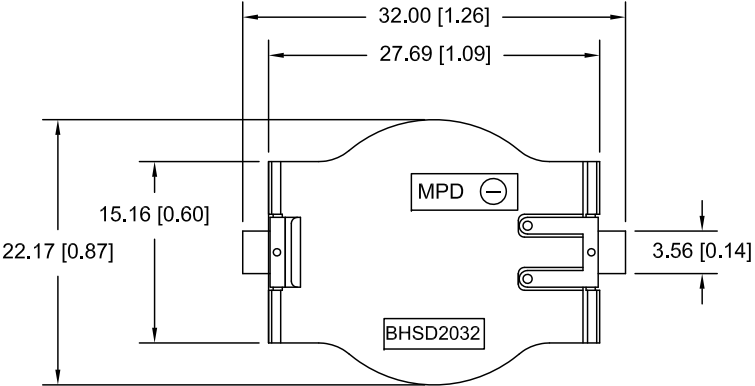
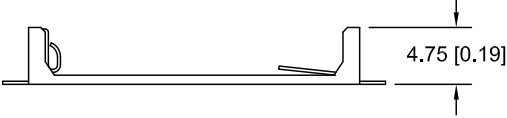


Date	SYM	REVISION RECORD	AUTH	DR.	CK.
01/28/11	A	RE-DESIGNED	T.B.	B.S.	




PCB LAYOUT



SPECIFICATIONS:

- * Material- LCP Zenite 6130, color white
- * Contacts : Phosphor Bronze C5191, Gold flash, 1u - 3u thickness
- * ROHS COMPLIANT

Tolerance (Inches)	 Memory Protection Devices, Inc 200 Broad Hollow Road, Farmingdale, New York 11735		
Decimal		Scale	Drawn By B.S.
±.5 (.020)			Approved By T.B.
Fractional	Title		
± .8 (.030)	BASE, CR2032 SURFACE MOUNT BATTERY		
Angular	Date	Drawing Number	
± 3°	01/28/11	BHSD-2032-SM	