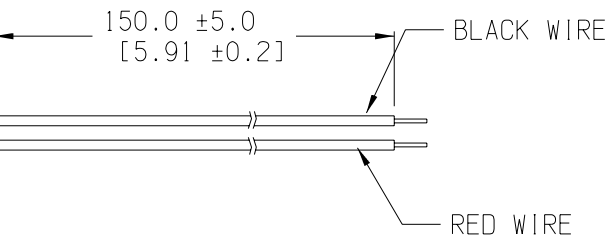
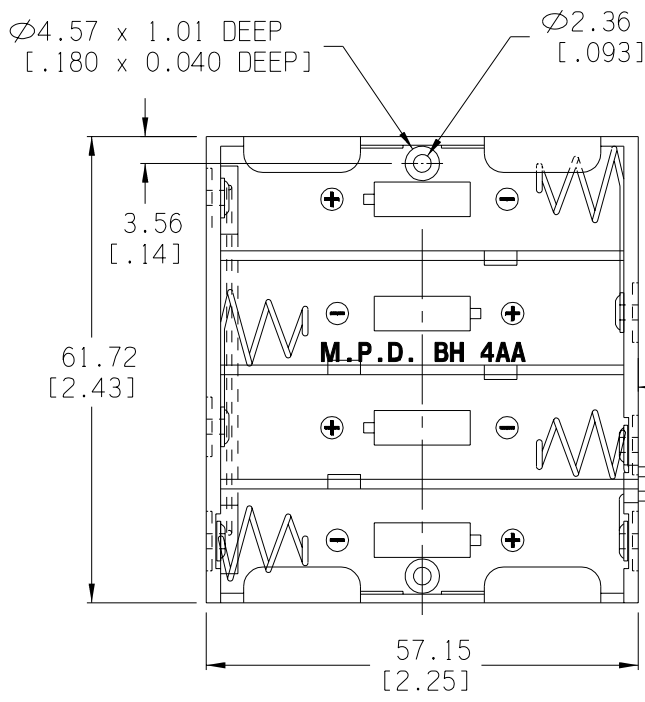
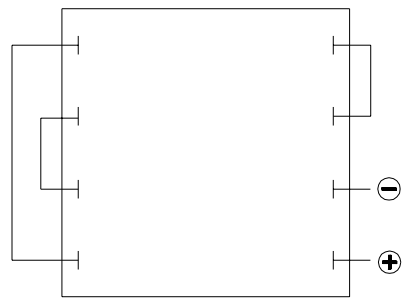
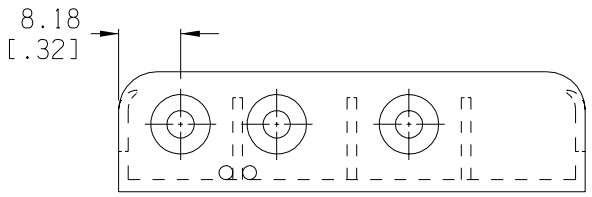
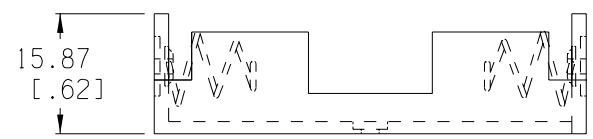


Date	SYM	REVISION RECORD	AUTH	DR.	CK.



**MOUNTING INSTRUCTION:**


USE 2-56 MACHINE SCREWS OR EYELETS 0.089" OD BY 0.15" FLANGE STIMPSON GS-3 SERIES OR EQUIVALENT ALSO ADHESIVES AND DOUBLE SIDED TAPES WORK WELL.



INTER CONNECTION SCHEMATIC

**NOTES:**

**MATERIAL:**  
 HOUSING: IMPACT RESISTANCE NYLON #6, BLACK, UL 94V-2, MATERIAL FILE #UL E 88499(S)  
 SPRING: SPRING STEEL, NICKLE PLATED  
 CONTACTS: SPRING STEEL, NICKLE PLATED  
 EYELETS: BRASS, NICKLE PLTD.  
 WIRES: A.W.N. 80°C V W-1 PACIFIC CSA TR-64 90°C 24AWC, 300V, 1007 E41396 UL, 24 AWG PVC

Tolerance (Inches)	 <b>Memory Protection Devices, Inc</b> 200 Broad Hollow Road, Farmingdale, New York 11735		
Decimal ±.5 (.020)	Scale	Drawn By B.S. Approved By T.B.	
Fractional ± .8 (.030)	Title 4AA BATTERY HOLDER WITH WIRE LEADS		
Angular ± 3°	Date 01/26/02	Drawing Number BH4AA-W	