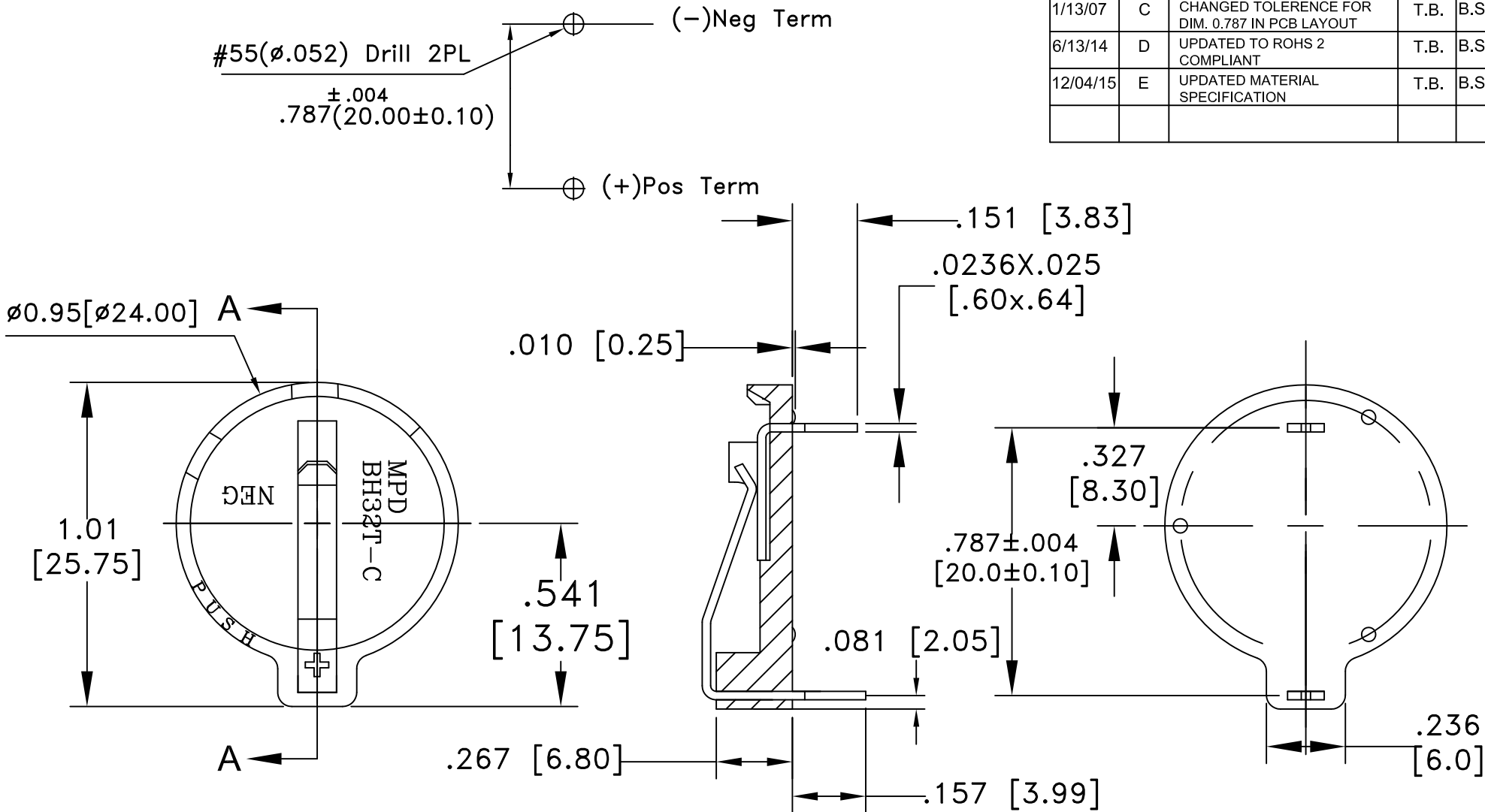



PCB LAYOUT

Date	SYM	REVISION RECORD	AUTH	DR.	CK.
1/13/07	C	CHANGED TOLERANCE FOR DIM. 0.787 IN PCB LAYOUT	T.B.	B.S.	
6/13/14	D	UPDATED TO ROHS 2 COMPLIANT	T.B.	B.S.	
12/04/15	E	UPDATED MATERIAL SPECIFICATION	T.B.	B.S.	



SPECIFICATIONS

- \*Holder material- LCP, 30% Glass Filled, UL94V-0
- \*Flammability rating-UL94V-0, UL file no. E344082
- \*Contacts :  
Positive: 0.0236" Thick PHOS-BRONZE, Nickel Plated  
Negative: spring tempered Stainless Steel, Nickel Plated
- \*Temperature Range: -40°C to +240°C
- ROHS 2 COMPLIANT
- \*Batteries: CR2320, CR2325, CR2330, CR2335

Tolerance (Except as noted)	 <b>Memory protection Devices, Inc</b> 200 Broad Hollow Road, Farmingdale, New York 11735	Scale	Drawn By B.S.
			Approved By T.B.
decimal ±.5 (.020)	Title CR2032 OR BR2032 BATTERY HOLDER	Date 12/04/15	Drawing Number BH32T-C-HITE
Fractional ± .8 (.030)			
Angular ± 3°			