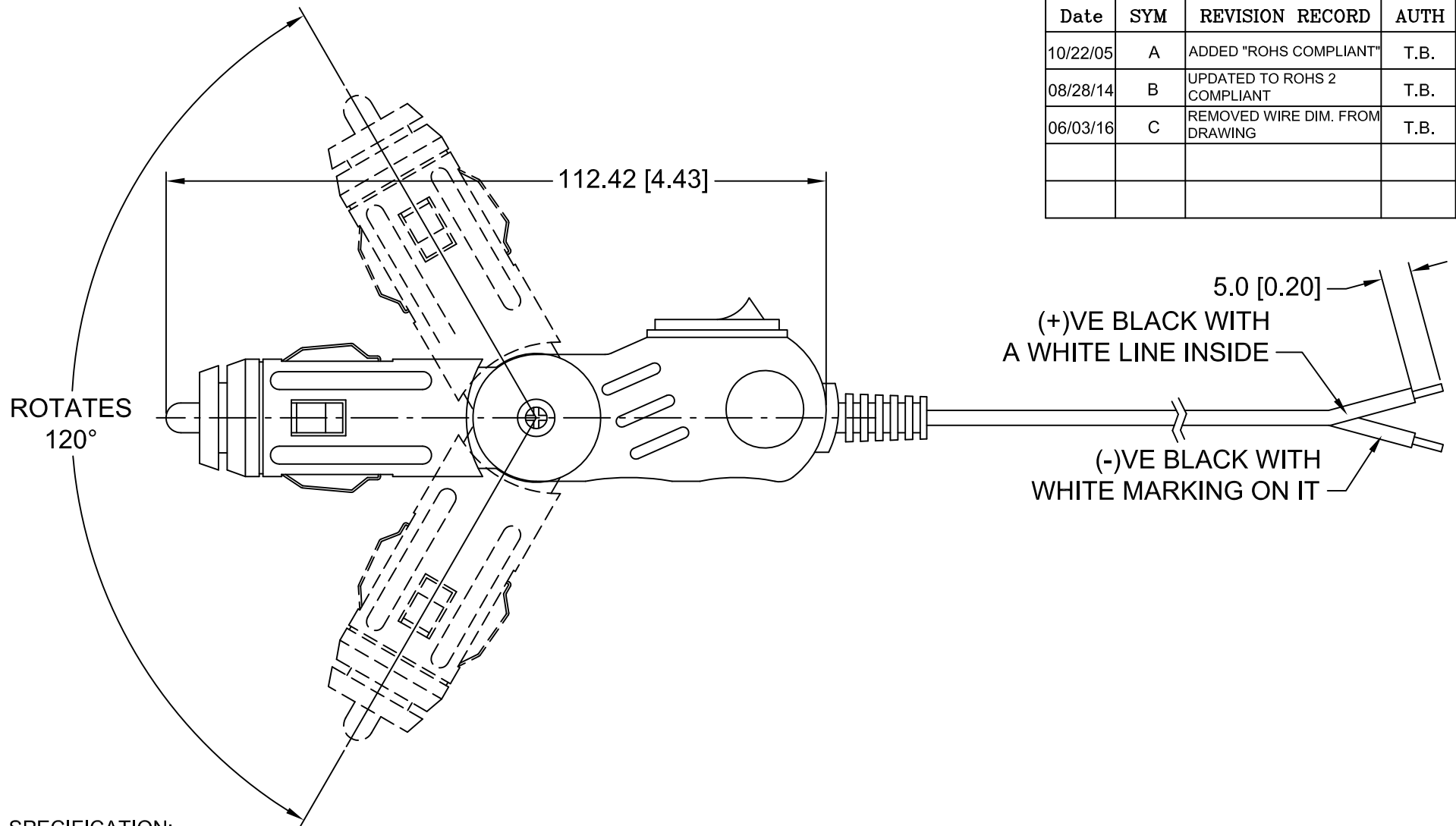


Date	SYM	REVISION RECORD	AUTH	DR.	CK.
10/22/05	A	ADDED "ROHS COMPLIANT"	T.B.	B.S.	
08/28/14	B	UPDATED TO ROHS 2 COMPLIANT	T.B.	B.S.	
06/03/16	C	REMOVED WIRE DIM. FROM DRAWING	T.B.	B.S.	



SPECIFICATION:

BODY: HIGH IMPACT ABS, UL94V-0, FILE NO. E56070(S)

COLOR: BLACK

CENTER CONTACT: BRASS, NICKEL PLATED

SLIDING CONTACTS: PHOS. BRONZE, NICKEL PLATED

SPRING: SW70C, ZINC PLATED

FUSE: 250V, 5 AMP, 3AG 6.35mm x 30mm (1/4" X 1 1/4")


RATED AT 18 HOURS, CONTINUOUS DUTY

10 AMP'S MAX WITH CORRECT FUSE.

SWITCH: RED LED, 10 AMPS - 125 VOLTS

OR 5 AMPS - 250 VOLTS

WIRE: 6' \pm 2" LONG, 18AWG, VW-1, SPT-1, 105°C, (+)VE WIRE WITH A WHITE LINE INSIDE, (-)VE WIRE WITH WHITE MARKING ON IT
ROHS 2 COMPLIANT

Tolerance (Except as noted)	 Memory Protection Devices, Inc 200 Broad Hollow Road, Farmingdale, New York 11735		
decimal $\pm .5$ (.020)			Scale Drawn By B.S.
Fractional $\pm .8$ (.030)	Title LIGHTED ROTARY CIGARETTE PLUG WITH 6' WIRE, 10AMP SWITCH AND 5AMP FUSE		
Angular $\pm 3^\circ$	Date 06/03/16	Drawing Number BK-5072	
		Approved By T.B.	