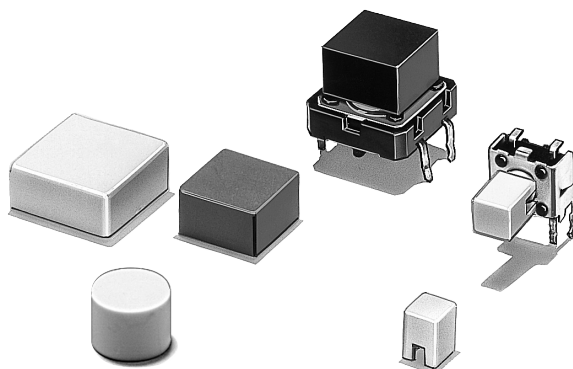


Tactile Switch Key Top

B32

Key Top Designed Specially for Projected-plunger-type B3F, B3FS and B3W Switches

- Available in a wide range of colors and sizes.
- RoHS Compliant.



Ordering Information

For B3F, B3FS and B3W Switches

| Color | 6 x 6 mm Switches (B3F-1000, B3F-3000, B3F-6000, B3W-1000, B3FS-1000) | | | 12 x 12 mm Switches (B3F-4000, B3F-5000, B3W-4000, B3FS-4000) | | |
|--------|--|-------------------|----------------|--|--------------------|---------------------|
| | 4 x 4 mm Key Top | 6 mm dia. Key Top | D-type Key Top | 9 x 9 mm Key Top | 12 x 12 mm Key Top | 9.5-mm dia. Key Top |
| Ivory | B32-1000 | B32-2000 | B32-2100 | B32-1200 | B32-1300 | B32-1600 |
| Black | B32-1010 | B32-2010 | B32-2110 | B32-1210 | B32-1310 | B32-1610 |
| Orange | B32-1020 | — | — | B32-1220 | B32-1320 | B32-1620 |
| Yellow | B32-1030 | — | — | B32-1230 | B32-1330 | B32-1630 |
| Blue | B32-1040 | — | — | B32-1240 | B32-1340 | — |
| White | B32-1060 | — | — | B32-1260 | B32-1360 | — |
| Red | B32-1080 | — | — | B32-1280 | B32-1380 | — |

Specifications

■ Characteristics

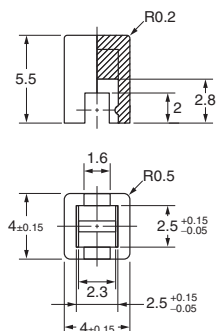
| | |
|-------------------------------|--|
| Ambient operating temperature | -25°C to 70°C (at 60% RH max.) with no icing or condensation |
| Ambient operating humidity | 35% to 85% (at 5 to 35°C) |

Dimensions

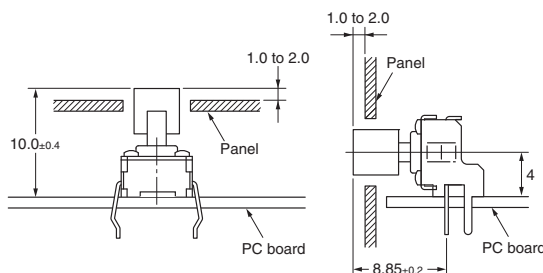
Note: Unless otherwise specified, all units are in millimeters and a tolerance of ± 0.4 mm applies to all dimensions.

■ For 6 x 6 mm Tactile Switch

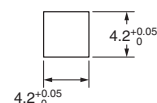
B32-10□0



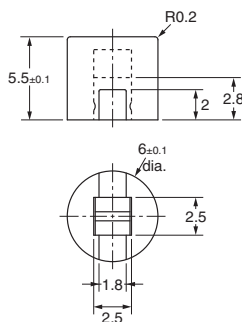
Reference Dimensions



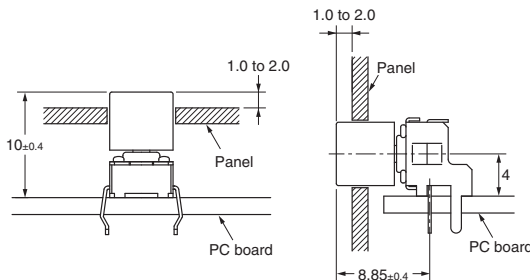
Panel Cutout



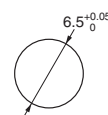
B32-2000 B32-2010



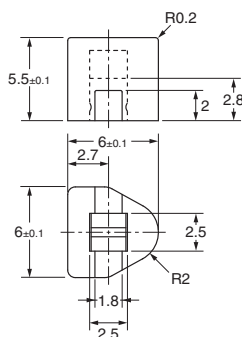
Reference Dimensions



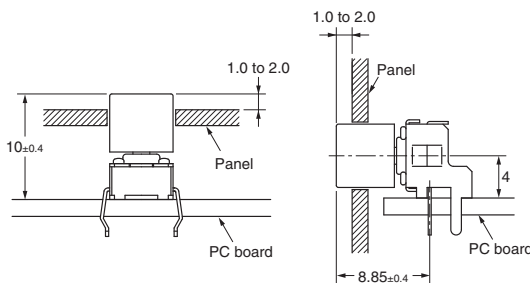
Panel Cutout



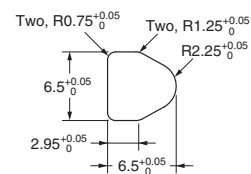
B32-2100 B32-2110



Reference Dimensions

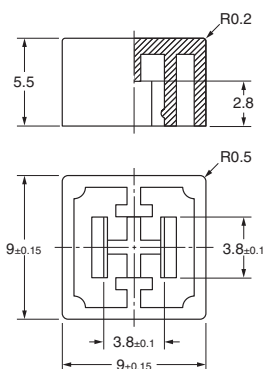


Panel Cutout

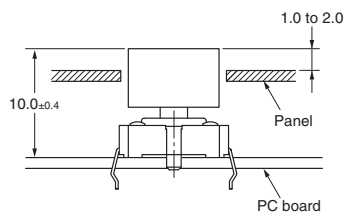


■ For 12 x 12 mm Tactile Switch

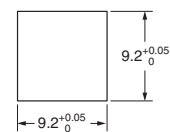
B32-12□0



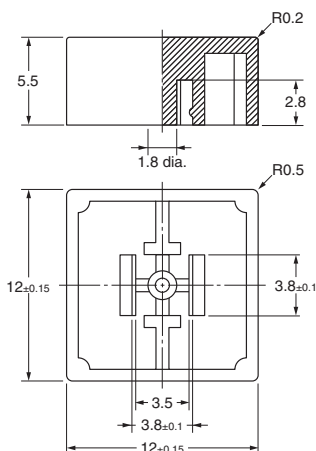
Reference Dimensions



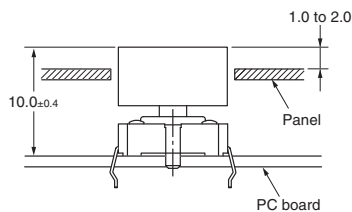
Panel Cutout



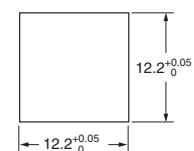
B32-13□0



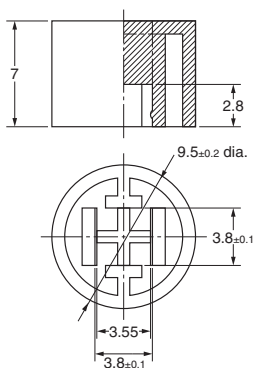
Reference Dimensions



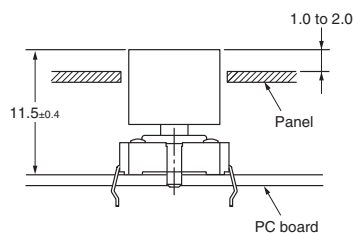
Panel Cutout



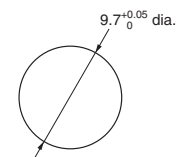
B32-16□0



Reference Dimensions



Panel Cutout



Precautions

Mount the Key Top on to the Switch after soldering, otherwise the Key Top may be deformed by the soldering heat.

All sales are subject to Omron Electronic Components LLC standard terms and conditions of sale, which can be found at http://www.components.omron.com/components/web/webfiles.nsf/sales_terms.html

ALL DIMENSIONS SHOWN ARE IN MILLIMETERS.
To convert millimeters into inches, multiply by 0.03937. To convert grams into ounces, multiply by 0.03527.

OMRON[®]

**OMRON ELECTRONIC
COMPONENTS LLC**

55 E. Commerce Drive, Suite B
Schaumburg, IL 60173

847-882-2288

OMRON ON-LINE

Global - <http://www.omron.com>

USA - <http://www.components.omron.com>

Cat. No. X303-E-1b

09/13

Specifications subject to change without notice

Printed in USA