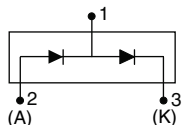
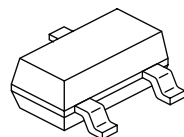


Schottky Diode, 2 x 0.1 A



SOT-23

FEATURES

- Small foot print, surface mountable
- Very low forward voltage drop
- Extremely fast switching speed for high frequency operation
- Guard ring for enhanced ruggedness and long term reliability
- Compliant to RoHS directive 2002/95/EC
- Designed and qualified for industrial level



RoHS
COMPLIANT

DESCRIPTION

This Schottky barrier diode is designed for high speed switching applications, voltage clamping and circuit protection. Miniature surface mount packages with reduced foot print are excellent for portable applications where space is limited.

PRODUCT SUMMARY

$I_{F(AV)}$	2 x 0.1 A
V_R	30 V

MAJOR RATINGS AND CHARACTERISTICS

SYMBOL	CHARACTERISTICS	VALUES	UNITS
I_F	DC	0.2	A
V_{RRM}		30	V
I_{FSM}	$t_p = 10$ ms sine	1.0	A
V_F	30 mA DC, $T_J = 25^\circ\text{C}$	0.5	V
P_d	Power dissipation at $T_A = 25^\circ\text{C}$	200	mW
T_J	Range	- 65 to 150	$^\circ\text{C}$

VOLTAGE RATINGS

PARAMETER	SYMBOL	BAT54SPbF	UNITS
Maximum DC reverse voltage	V_R	30	V
Maximum working peak reverse voltage	V_{RWM}		

ABSOLUTE MAXIMUM RATINGS

PARAMETER	SYMBOL	TEST CONDITIONS	VALUES	UNITS
Maximum average forward current per leg per device	$I_{F(AV)}$	DC	0.1	A
			0.2	
Maximum peak one cycle non-repetitive surge current at $T_J = 25^\circ\text{C}$	I_{FSM}	5 μs sine or 3 μs rect. pulse	8.4	
		10 ms sine or 6 ms rect. pulse	1.0	

ELECTRICAL SPECIFICATIONS					
PARAMETER	SYMBOL	TEST CONDITIONS		VALUES	UNITS
Maximum forward voltage drop	$V_{\text{FM}}^{(1)}$	0.1 A	$T_{\text{J}} = 25\text{ }^{\circ}\text{C}$	0.65	V
		30 mA		0.50	
		10 mA		0.40	
		1 mA		0.32	
		0.1 mA		0.24	
Maximum reverse leakage current	$I_{\text{RM}}^{(1)}$	$V_{\text{R}} = 25\text{ V}$		2	μA
		$V_{\text{R}} = 30\text{ V}$		3	
Maximum junction capacitance	C_{T}	$V_{\text{R}} = 5\text{ V}_{\text{DC}}$ (test signal range 100 kHz to 1 MHz), $T_{\text{J}} = 25\text{ }^{\circ}\text{C}$		10	pF
Maximum voltage rate of change	dV/dt	Rated V_{R}		10 000	V/ μs

Note

⁽¹⁾ Pulse width < 300 μs , duty cycle < 2 %

THERMAL - MECHANICAL SPECIFICATIONS				
PARAMETER	SYMBOL	TEST CONDITIONS	VALUES	UNITS
Maximum junction and storage temperature range	$T_J^{(1)}, T_{Stg}$		- 65 to 150	$^{\circ}\text{C}$
Maximum thermal resistance, junction to ambient	R_{thJA}	Mounted on PC board FR4 with minimum pad size	500	$^{\circ}\text{C/W}$
Approximate weight			0.008	g
Marking device		Case style SOT-23	HYWLC	

Note

⁽¹⁾ $\frac{dP_{tot}}{dT_J} < \frac{1}{R_{thJA}}$ thermal runaway condition for a diode on its own heatsink

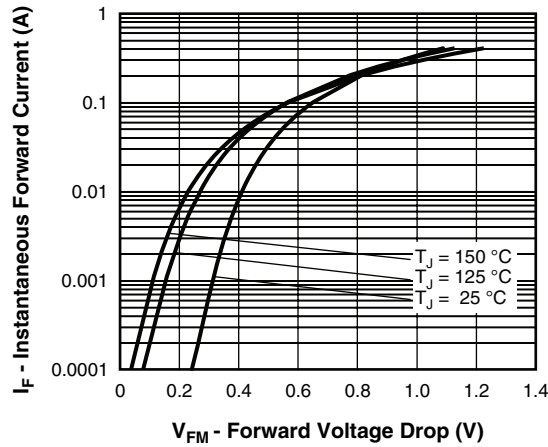


Fig. 1 - Maximum Forward Voltage Drop Characteristics
(Per Leg)

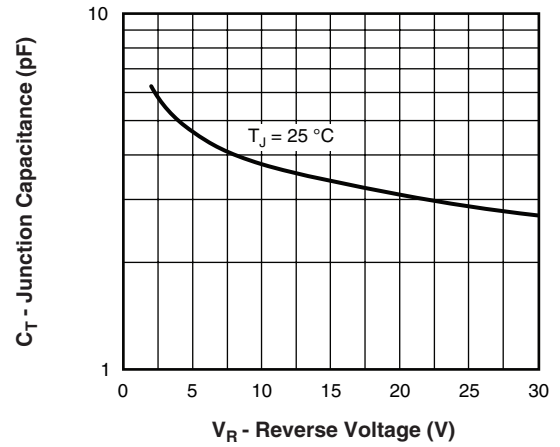


Fig. 3 - Typical Junction Capacitance vs. Reverse Voltage
(Per Leg)

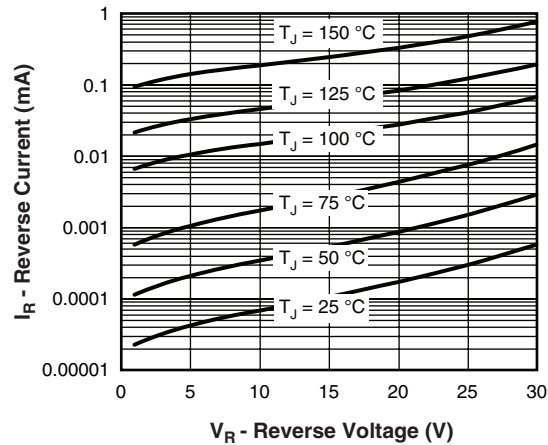


Fig. 2 - Typical Values of Reverse Current vs.
Reverse Voltage (Per Leg)

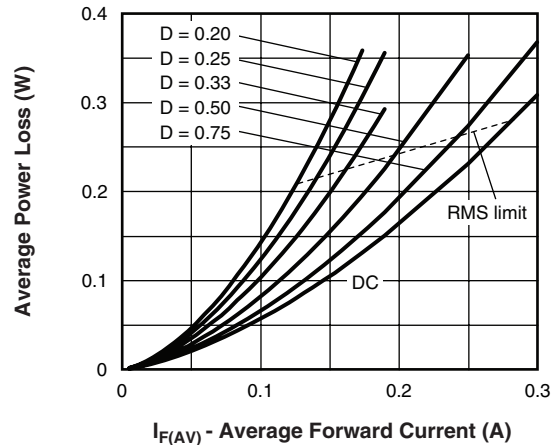


Fig. 4 - Forward Power Loss Characteristics

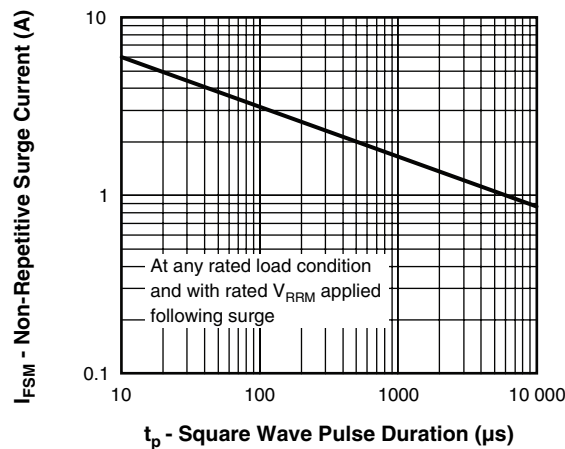


Fig. 5 - Maximum Non-Repetitive Surge Current

BAT54SPbF

Vishay High Power Products Schottky Diode, 2 x 0.1 A



ORDERING INFORMATION TABLE

DEVICE	PACKAGE	MARKING	CONFIGURATION	BASE QUANTITY	DELIVERY MODE
BAT54S	SOT-23	HYWLC	Dual Series	3000	Tape and reel

LINKS TO RELATED DOCUMENTS

Dimensions	www.vishay.com/doc?95048
Part marking information	www.vishay.com/doc?95338
Packaging information	www.vishay.com/doc?95061



Disclaimer

All product specifications and data are subject to change without notice.

Vishay Intertechnology, Inc., its affiliates, agents, and employees, and all persons acting on its or their behalf (collectively, "Vishay"), disclaim any and all liability for any errors, inaccuracies or incompleteness contained herein or in any other disclosure relating to any product.

Vishay disclaims any and all liability arising out of the use or application of any product described herein or of any information provided herein to the maximum extent permitted by law. The product specifications do not expand or otherwise modify Vishay's terms and conditions of purchase, including but not limited to the warranty expressed therein, which apply to these products.

No license, express or implied, by estoppel or otherwise, to any intellectual property rights is granted by this document or by any conduct of Vishay.

The products shown herein are not designed for use in medical, life-saving, or life-sustaining applications unless otherwise expressly indicated. Customers using or selling Vishay products not expressly indicated for use in such applications do so entirely at their own risk and agree to fully indemnify Vishay for any damages arising or resulting from such use or sale. Please contact authorized Vishay personnel to obtain written terms and conditions regarding products designed for such applications.

Product names and markings noted herein may be trademarks of their respective owners.