

Serial EEPROM Series Standard EEPROM  
WLCSP EEPROM



# BU99901GUZ-W (32Kbit)

●General Description

BU99901GUZ-W series is a serial EEPROM of I<sup>2</sup>C BUS interface method.

●Features

- Completely conforming to the world standard I<sup>2</sup>C BUS.  
All controls available by 2 ports of serial clock (SCL) and serial data (SDA)
- Other devices than EEPROM can be connected to the same port, saving microcontroller port.
- 1.7V to 3.6V single power source action most suitable for battery use.
- FAST MODE :400kHz at 1.7V to 3.6V
- Page write mode useful for initial value write at factory shipment.
- Auto erase and auto end function at data rewrite.
- Low current consumption
  - At write operation (3.3V) : 0.6mA (Typ.)
  - At read operation (3.6V) : 0.6mA (Typ.)
  - At standby operation (3.6V) : 0.1μA (Typ.)
- Write mistake prevention function
  - Write (write protect) function added
  - Write mistake prevention function at low voltage
- Compact package
  - W(Typ.) x D(Typ.) x H(Max.) : 1.76mm x 1.05mm x 0.35mm
- Data rewrite up to 100,000 times
- Data kept for 40 years
- Noise filter built in SCL / SDA terminal
- Shipment data all address FFh

●Page write

Product number	BU99901GUZ-W
Number of pages	32Byte

●Absolute Maximum Ratings (Ta=25°C)

Parameter	symbol	Ratings	Unit	Remarks
Impressed voltage	V <sub>CC</sub>	-0.3 to +6.5	V	
Permissible dissipation	P <sub>d</sub>	220	mW	When using at Ta=25°C or higher 2.2mW to be reduced per 1°C.
Storage temperature range	T <sub>stg</sub>	-65 to +125	°C	
Action temperature range	T <sub>opr</sub>	-40 to +85	°C	
Terminal voltage	—	-0.3 to V <sub>CC</sub> +1.0 *1	V	

\*1 The Max value of Terminal Voltage is not over 6.5V.

●Memory cell characteristics (Ta=25°C, V<sub>CC</sub>=1.7V to 3.6V)

Parameter	Limits			Unit
	Min.	Typ.	Max.	
Number of data rewrite times *1	100,000	—	—	Times
Data hold years *1	40	—	—	Years

\*1 Not 100% TESTED

●Recommended Operating Ratings

Parameter		Symbol	Rating	Unit
Supply Voltage	Write(Ta=-40°C to 85°C)	V <sub>CC</sub>	2.7 to 3.3	V
	Write(Ta=-40°C to 70°C)		1.8 to 3.3	
	Read(Ta=-40°C to 85°C)		1.7 to 3.6	
Input Voltage		V <sub>IN</sub>	0 to V <sub>CC</sub>	V

○Product structure : Silicon monolithic integrated circuit ○This product is not designed protection against radioactive rays

**●Electrical characteristics** (Unless otherwise specified Ta=-40°C to 85°C, V<sub>CC</sub>=1.7V to 3.6V)

Parameter	Symbol	Limits			Unit	Condition
		Min	Typ.	Max.		
"H" Input Voltage1	V <sub>IH1</sub>	0.7V <sub>CC</sub>	—	V <sub>CC</sub> +1.0	V	2.5V ≤ V <sub>CC</sub> ≤ 3.6V
"L" Input Voltage1	V <sub>IL1</sub>	-0.3	—	0.3V <sub>CC</sub>	V	2.5V ≤ V <sub>CC</sub> ≤ 3.6V
"H" Input Voltage2	V <sub>IH2</sub>	0.8V <sub>CC</sub>	—	V <sub>CC</sub> +1.0	V	1.8V ≤ V <sub>CC</sub> < 2.5V
"L" Input Voltage2	V <sub>IL2</sub>	-0.3	—	0.2V <sub>CC</sub>	V	1.8V ≤ V <sub>CC</sub> < 2.5V
"H" Input Voltage3	V <sub>IH3</sub>	0.9V <sub>CC</sub>	—	V <sub>CC</sub> +1.0	V	1.7V ≤ V <sub>CC</sub> < 1.8V
"L" Input Voltage3	V <sub>IL3</sub>	-0.3	—	0.1V <sub>CC</sub>	V	1.7V ≤ V <sub>CC</sub> < 1.8V
"L" Output Voltage1	V <sub>OL1</sub>	—	—	0.4	V	I <sub>OL</sub> =3.0mA, 2.5V ≤ V <sub>CC</sub> ≤ 3.6V (SDA)
"L" Output Voltage2	V <sub>OL2</sub>	—	—	0.2	V	I <sub>OL</sub> =0.7mA, 1.7V ≤ V <sub>CC</sub> < 2.5V (SDA)
Input Leakage Current	I <sub>LI</sub>	-1	—	1	μA	V <sub>IN</sub> =0 to V <sub>CC</sub> (WP, TEST)
Pull Up Resistance	I <sub>LI2</sub>	6	—	14	kΩ	(SCL, SDA)
Output Leakage Current	I <sub>LO</sub>	-1	—	1	μA	V <sub>OUT</sub> =0 to V <sub>CC</sub> (SDA)
Current consumption at action	I <sub>CC1</sub>	—	—	4.1	mA	V <sub>CC</sub> =3.3V, f <sub>SCL</sub> =400kHz, t <sub>WR</sub> =5ms Byte Write, Page Write
	I <sub>CC2</sub>	—	—	1.7		V <sub>CC</sub> =3.6V, f <sub>SCL</sub> =400kHz Random read, Current read, Sequential read
Standby Current	I <sub>SB</sub>	—	—	2.0	μA	V <sub>CC</sub> =3.6V, SDA, SCL=V <sub>CC</sub> , WP=GND

**●Action timing characteristics** (Unless otherwise specified Ta=-40°C to 85°C, V<sub>CC</sub>=1.7V to 3.6V)

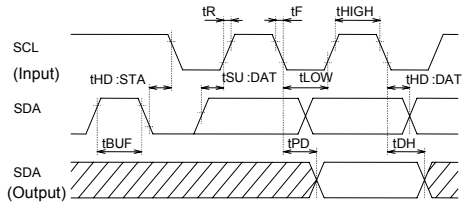
Parameter	Symbol	FAST-MODE 2.5V ≤ V <sub>CC</sub> ≤ 3.6V			STANDARD-MODE 1.7V ≤ V <sub>CC</sub> ≤ 3.6V			Unit
		Min.	Typ.	Max.	Min.	Typ.	Max.	
SCL Frequency	f <sub>SCL</sub>	—	—	400	—	—	100	kHz
Data clock "High" time	t <sub>HIGH</sub>	0.6	—	—	4.0	—	—	μs
Data clock "Low" time	t <sub>LOW</sub>	1.2	—	—	4.7	—	—	μs
SDA, SCL rise time *1	t <sub>R</sub>	—	—	0.3	—	—	1.0	μs
SDA, SCL fall time *1	t <sub>F</sub>	—	—	0.3	—	—	0.3	μs
Start condition hold time	t <sub>HD:STA</sub>	0.6	—	—	4.0	—	—	μs
Start condition setup time	t <sub>SU:STA</sub>	0.6	—	—	4.7	—	—	μs
Input data hold time	t <sub>HD:DAT</sub>	0	—	—	0	—	—	ns
Input data setup time	t <sub>SU:DAT</sub>	100	—	—	250	—	—	ns
Output data delay time	t <sub>PD</sub>	0.1	—	0.9	0.2	—	3.5	μs
Output data hold time	t <sub>DH</sub>	0.1	—	—	0.2	—	—	μs
Stop condition data setup time	t <sub>SU:STO</sub>	0.6	—	—	4.7	—	—	μs
Bus release time before transfer start	t <sub>BUF</sub>	1.2	—	—	4.7	—	—	μs
Internal write cycle time	t <sub>WR</sub>	—	—	5	—	—	5	ms
Noise removal valid period (SDA, SCL terminal)	t <sub>I</sub>	—	—	0.1	—	—	0.1	μs
WP hold time	t <sub>HD:WP</sub>	0	—	—	0	—	—	ns
WP setup time	t <sub>SU:WP</sub>	0.1	—	—	0.1	—	—	μs
WP valid time	t <sub>HIGH:WP</sub>	1.0	—	—	1.0	—	—	μs

\*1 Not 100% tested

**●FAST-MODE and STANDARD-MODE**

FAST-MODE and STANDARD-MODE are of same actions, and mode is changed. They are distinguished by action speeds. 100kHz action is called STANDARD-MODE, and 400kHz action is called FAST-MODE. This action frequency is the maximum action frequency, so 100kHz clock may be used in FAST-MODE. When power source voltage goes down, action at high speed is not carried out, therefore, at V<sub>CC</sub>=2.5V to 5.5V, 400kHz, namely, action is made in FASTMODE. (Action is made also in STANDARD-MODE) V<sub>CC</sub>=1.8V to 2.5V is only action in 100kHz STANDARD-MODE.

● Sync Data Input / Output Timing



- Input read at the rise edge of SCL
- Data output in sync with the fall of SCL

Figure 1-(a). Sync data input / output timing

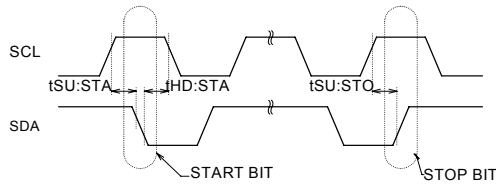


Figure 1-(b). Start - stop bit timing

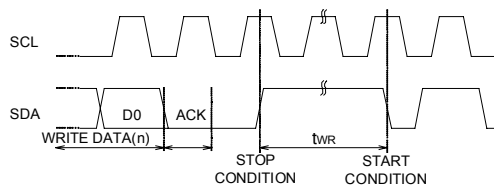


Figure 1-(c). Write cycle timing

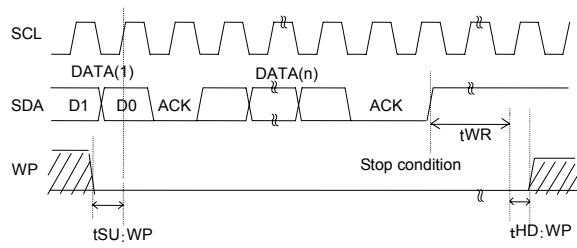
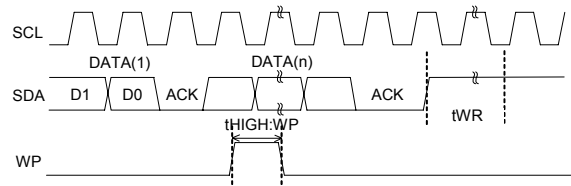


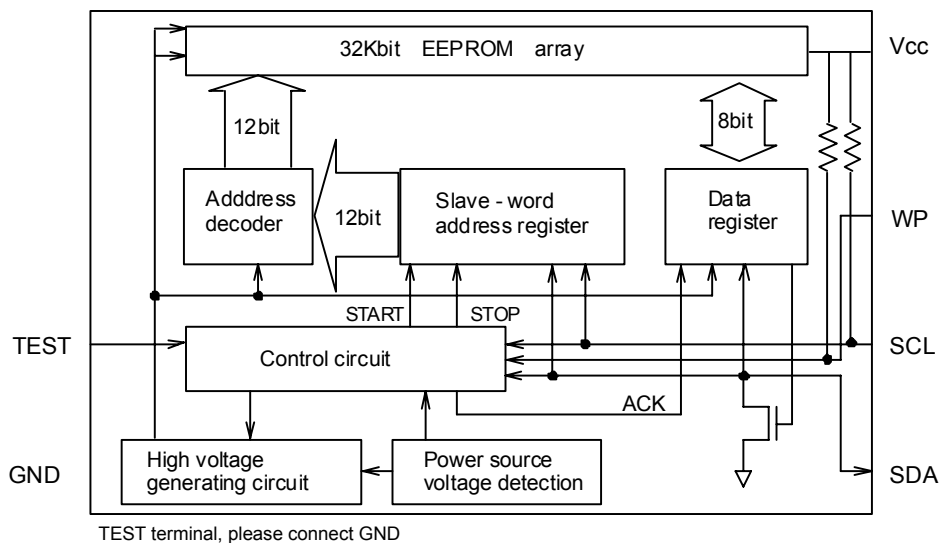
Figure 1-(d). WP timing at write execution



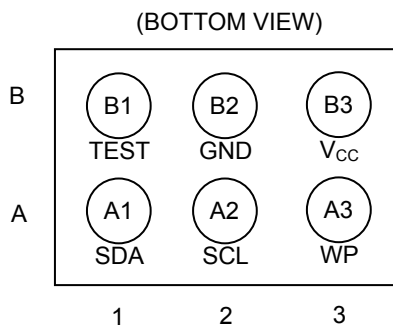
- At write execution, in the area from the D0 taken clock rise of the first DATA(1), to tWR, set WP="LOW".
- By setting WP "HIGH" in the area, write can be cancelled. When it is set WP="HIGH" during tWR, write is forcibly ended, and data of address under access is not guaranteed, therefore write it once again.

Figure 1-(e). WP timing at write cancels

●Block Diagram



●Pin Configuration



●Pin Descriptions

Land No.	Terminal name	Input / output	Unit
B3	V <sub>CC</sub>	-	Power Supply
B2	GND	-	Reference voltage of all input / output
B1	TEST	Input	TEST terminal, Connect GND
A3	WP	Input	Write protect terminal
A2	SCL	Input	Serial clock input
A1	SDA	Input /output	Slave and word address, Serial data input serial data output

● Typical Performance Curves

(The following values are Typ. ones.)

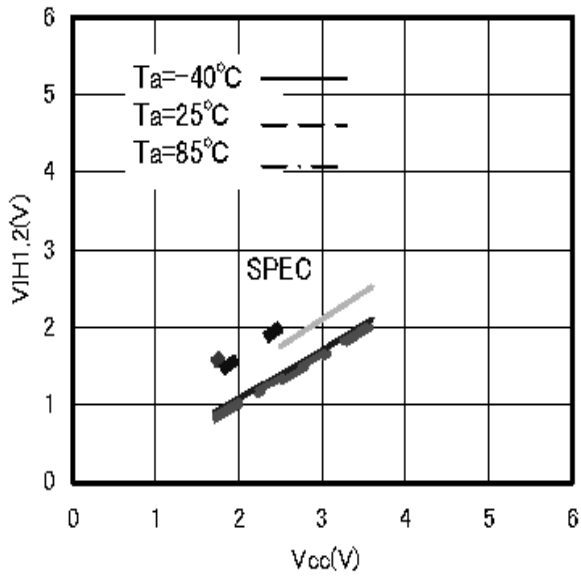


Figure 2. H input voltage  $V_{IH1,2}$  (SCL,SDA,WP)

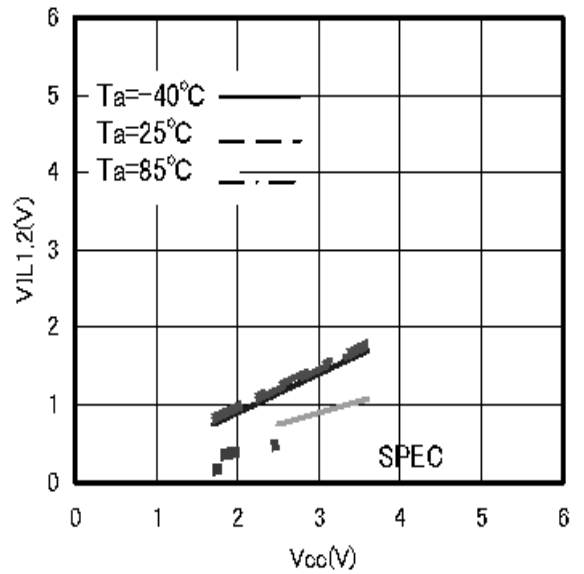


Figure 3. L input voltage  $V_{IL}$  (SCL,SDA,WP)

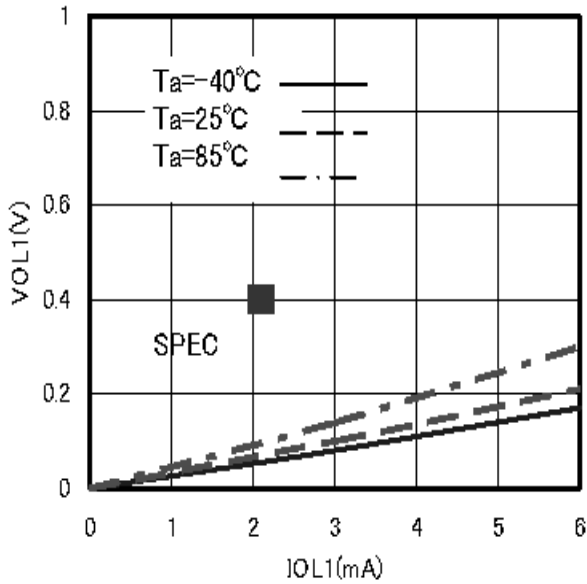


Figure 4. L output voltage  $V_{OL-IOL}$  ( $V_{CC} = 1.7V$ )

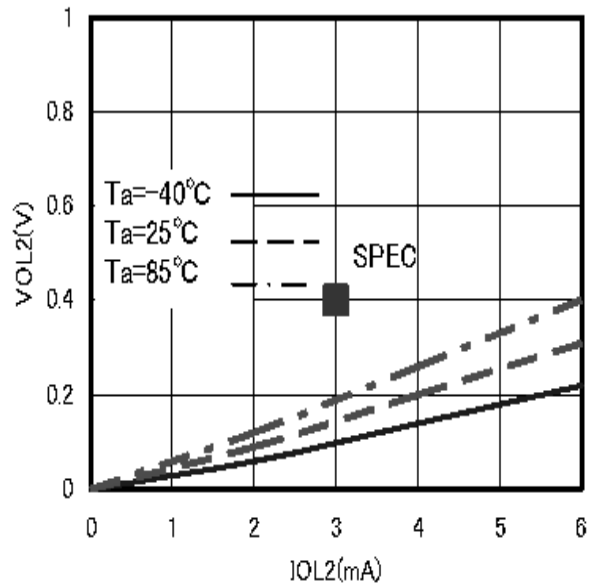


Figure 5. L output voltage  $V_{OL-IOL}$  ( $V_{CC} = 2.5V$ )

● Typical Performance Curves - Continued

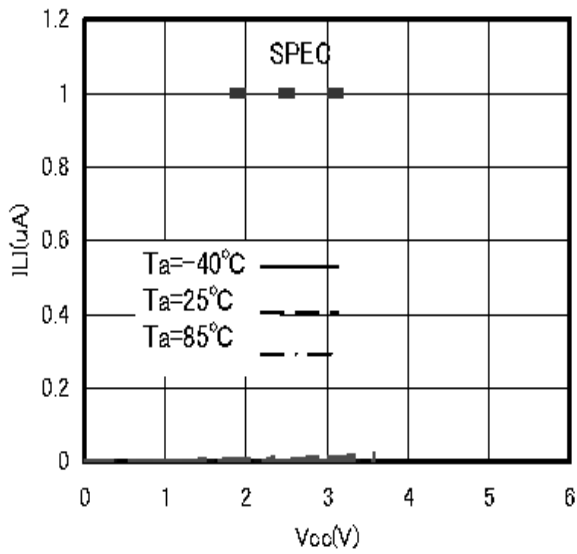


Figure 6. Input leak current  $I_{LI}(SCL,WP)$

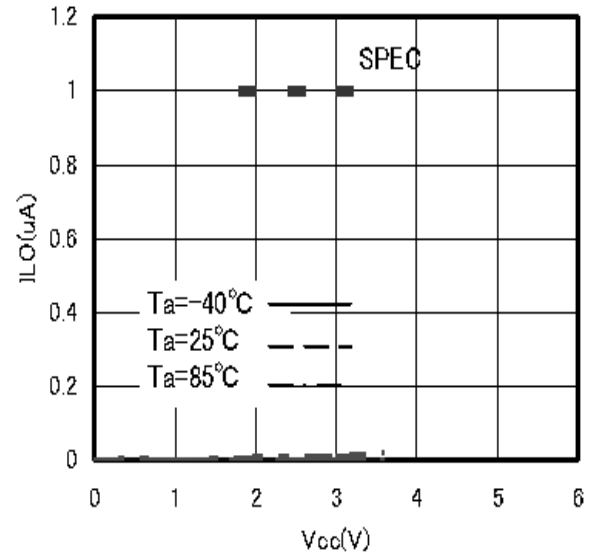


Figure 7. Output leak current

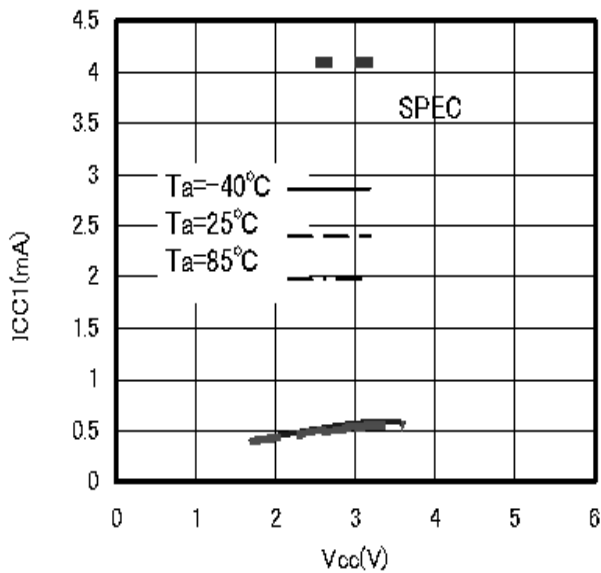


Figure 8. Current consumption at WRITE operation  $I_{cc1}$  ( $f_{SCL}=400kHz$ )

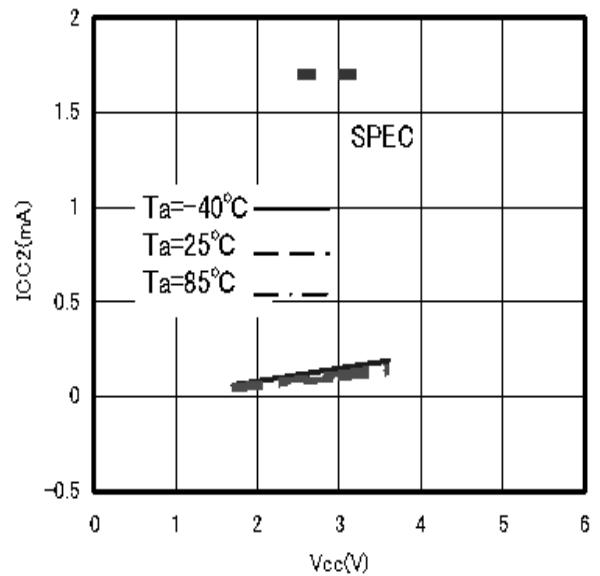


Figure 9. Current consumption at READ operation  $I_{cc2}$  ( $f_{SCL}=400kHz$ )

● Typical Performance Curves - Continued

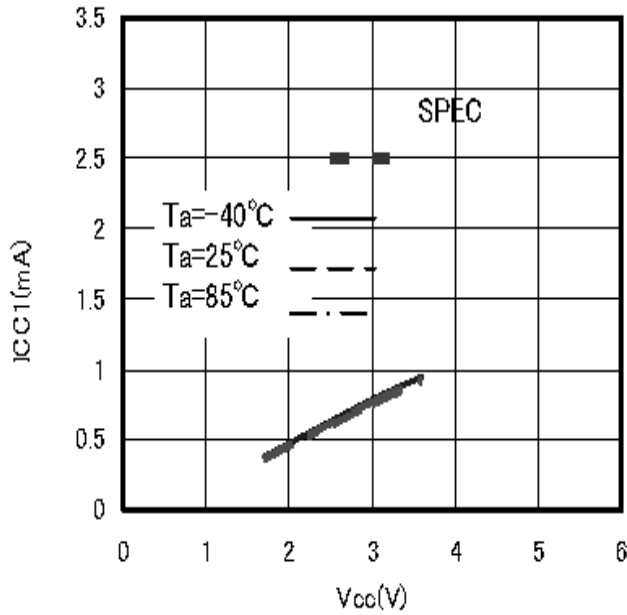


Figure 10. Current consumption at WRITE operation Icc1 (fSCL=100kHz)

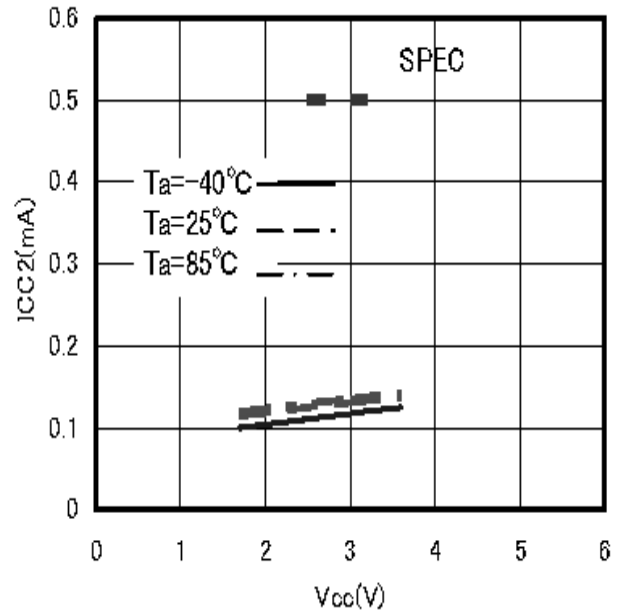


Figure 11. Current consumption at READ operation Icc2 (fSCL=100kHz)

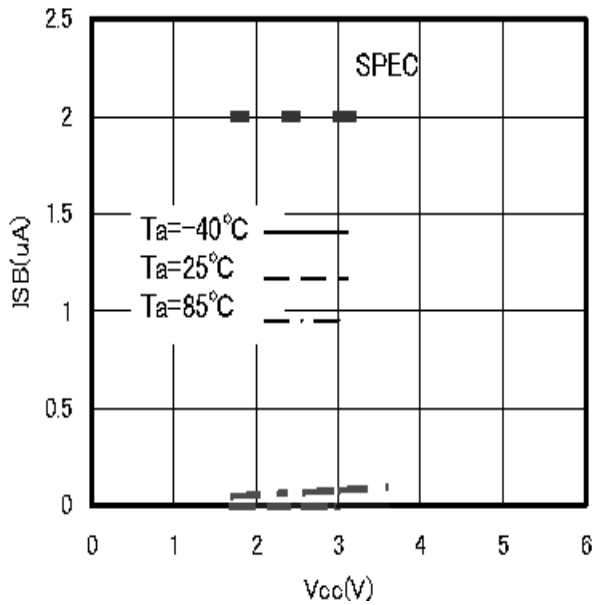


Figure 12. Standby current ISB

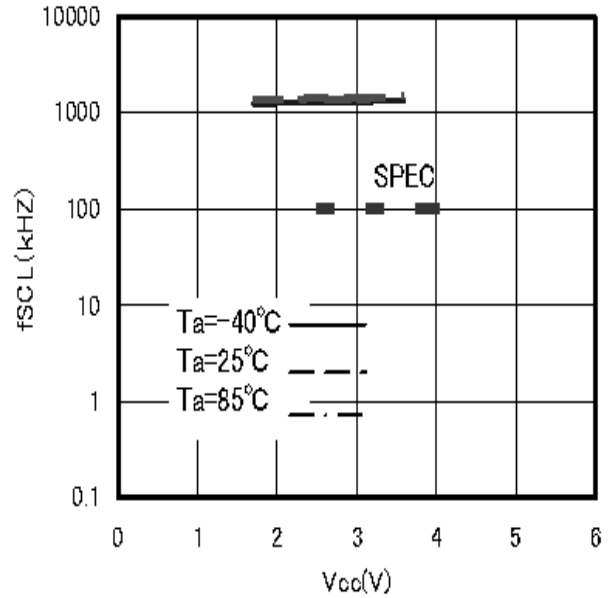


Figure 13. SCL frequency fSCL

● Typical Performance Curves - Continued

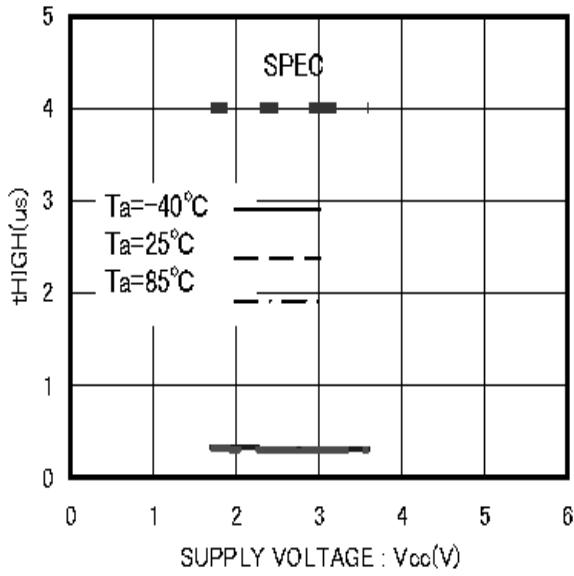


Figure 14. Data clock High Period  $t_{HIGH}$

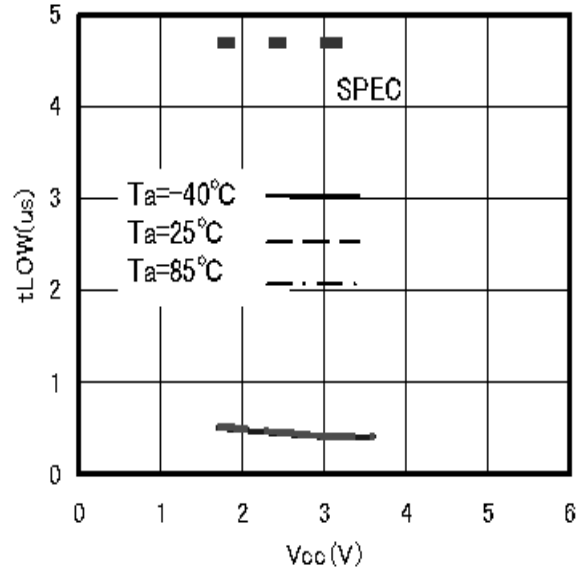


Figure 15. Data clock Low Period  $t_{LOW}$

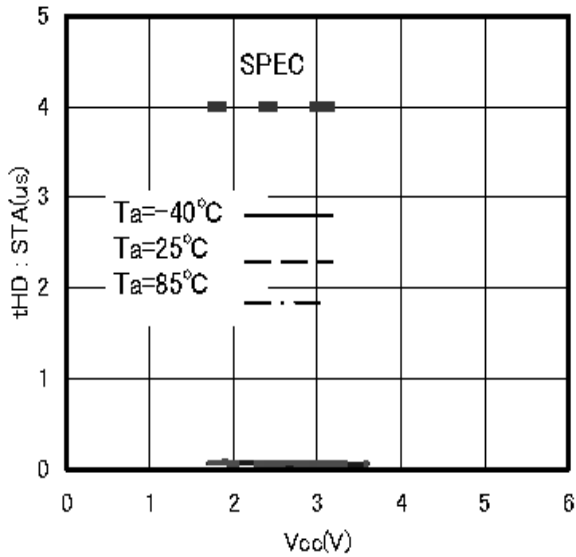


Figure 16. Start Condition Hold Time  $t_{HD:STA}$

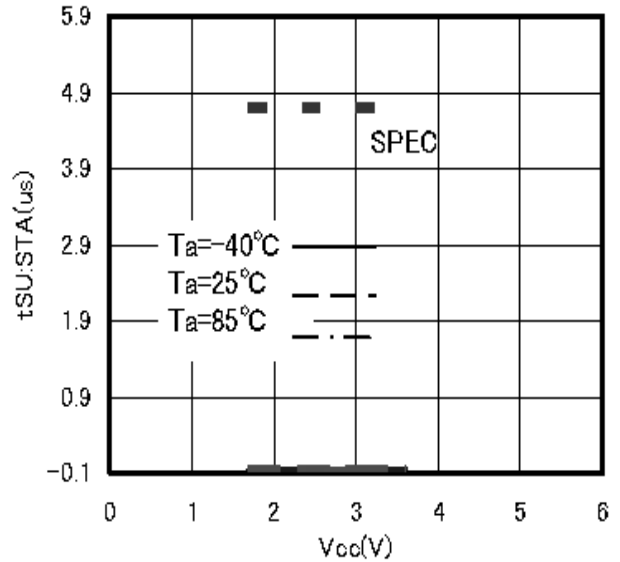


Figure 17. Start Condition Setup Time  $t_{SU:STA}$



● Typical Performance Curves - Continued

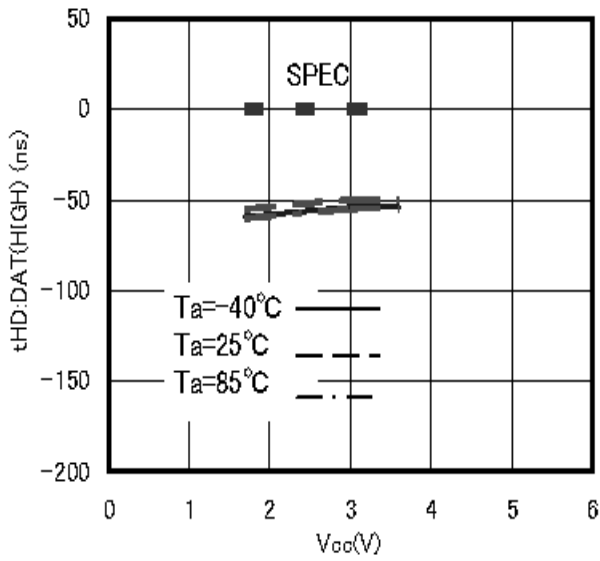


Figure 18. Input Data Hold Time  $t_{HD:DAT(HIGH)}$

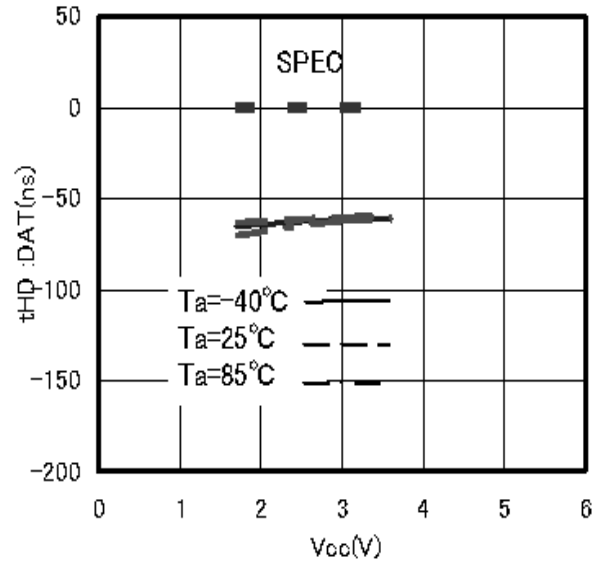


Figure 19. Input Data Hold Time  $t_{HD:DAT(LOW)}$

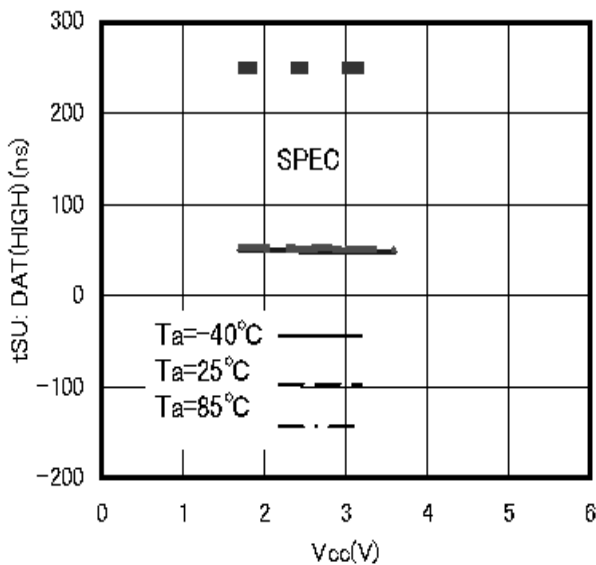


Figure 20. Input Data Setup Time  $t_{SU:DAT(HIGH)}$

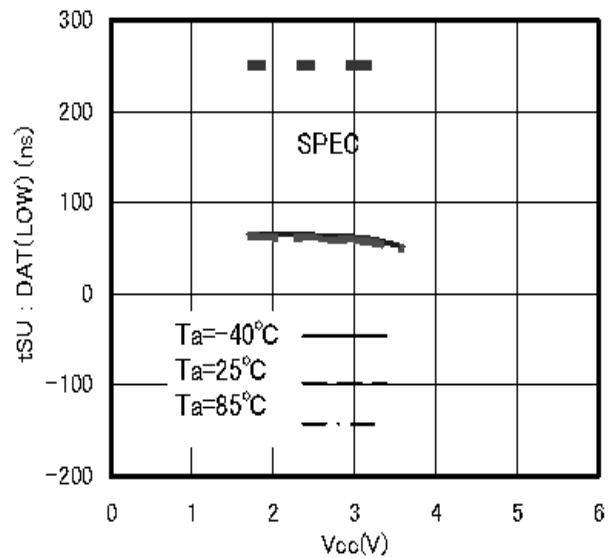


Figure 21. Input Data Setup Time  $t_{SU:DAT(LOW)}$

● Typical Performance Curves - Continued

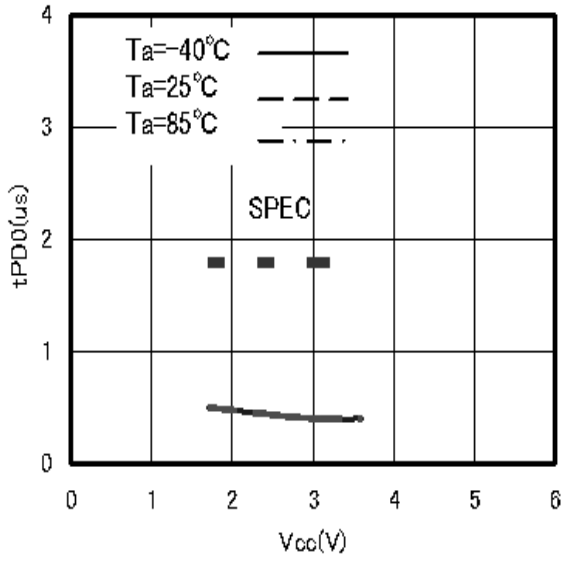


Figure 22. Data output delay time tPD0

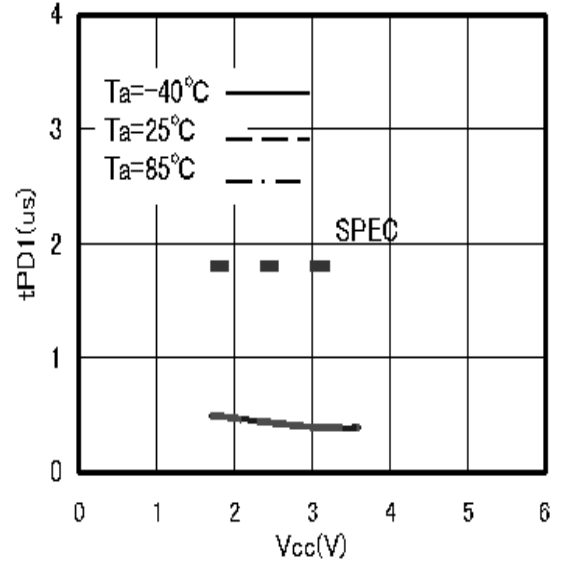


Figure 23. Data output delay time tPD1

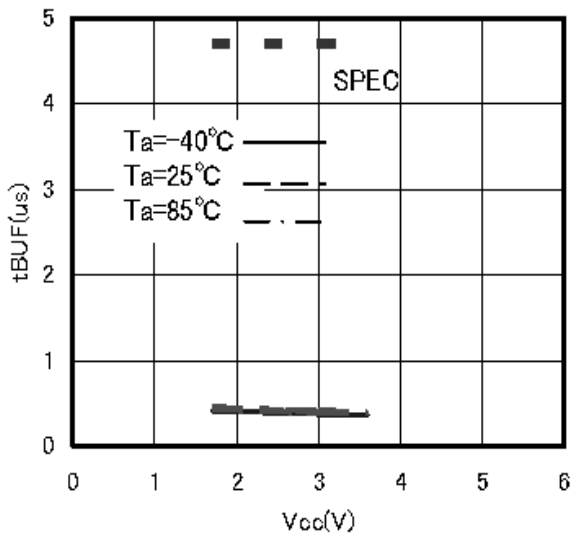


Figure 24. BUS open time before transmission tBUF

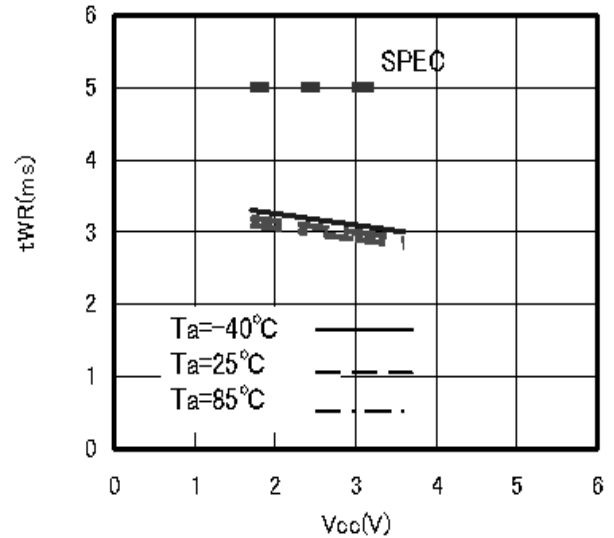


Figure 25. Internal writing cycle time tWR

● Typical Performance Curves - Continued

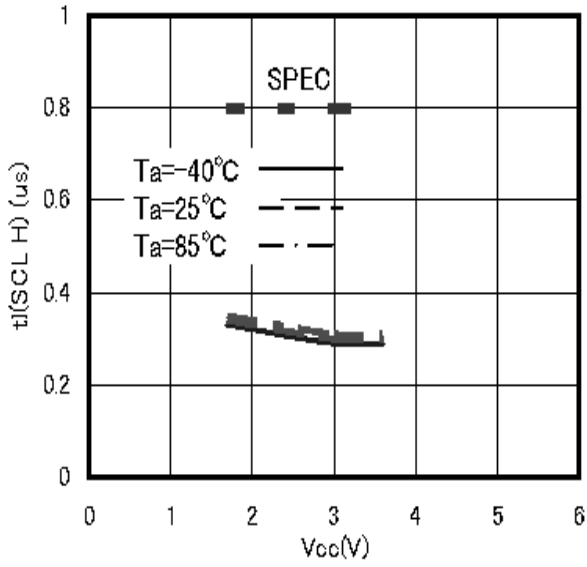


Figure 26. Noise reduction effect time  $t_I(\text{SCL H})$

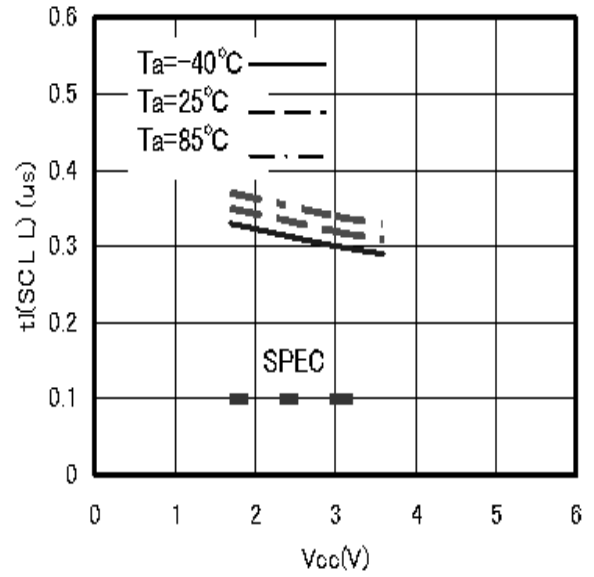


Figure 27. Noise reduction effect time  $t_I(\text{SCL L})$

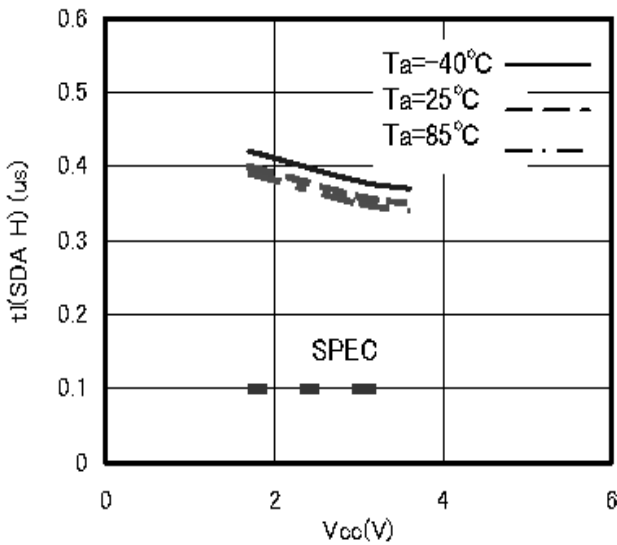


Figure 28. Noise reduction effect time  $t_I(\text{SDA H})$

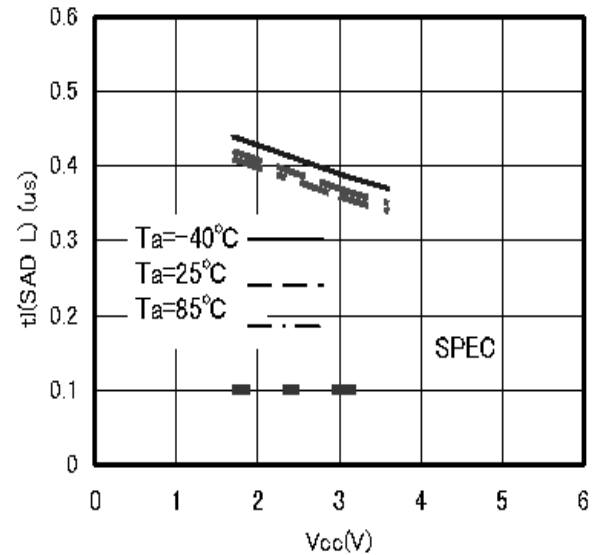


Figure 29. Noise reduction effect time  $t_I(\text{SDA L})$

● Typical Performance Curves - Continued

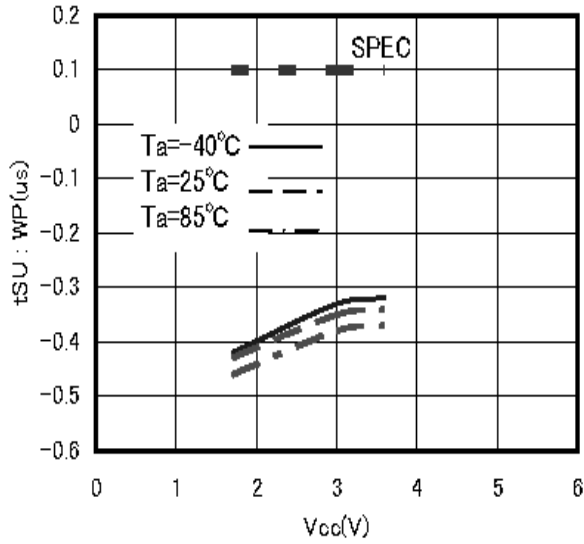


Figure 30. WP setup time tSU:WP

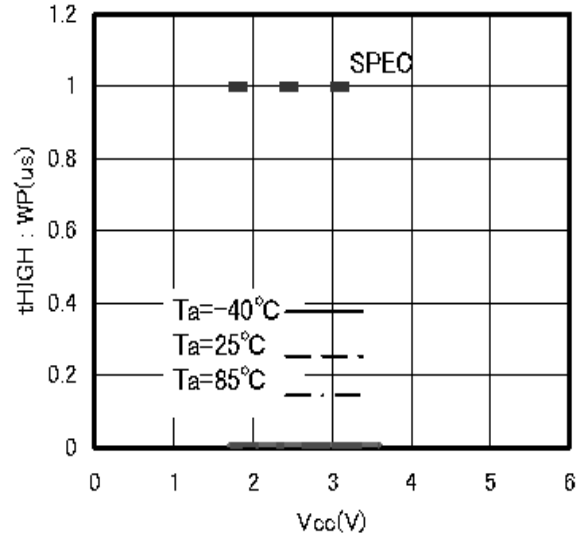


Figure 31. WP effective time tHIGH:WP

●I<sup>2</sup>C BUS communication

○I<sup>2</sup>C BUS data communication

I<sup>2</sup>C BUS data communication starts by start condition input, and ends by stop condition input. Data is always 8bit long, and acknowledge is always required after each byte.

I<sup>2</sup>C BUS carries out data transmission with plural devices connected by 2 communication lines of serial data (SDA) and serial clock (SCL).

Among devices, there are “master” that generates clock and control communication start and end, and “slave” that is controlled by addresses peculiar to devices.

EEPROM becomes “slave”. And the device that outputs data to bus during data communication is called “transmitter”, and the device that receives data is called “receiver”.

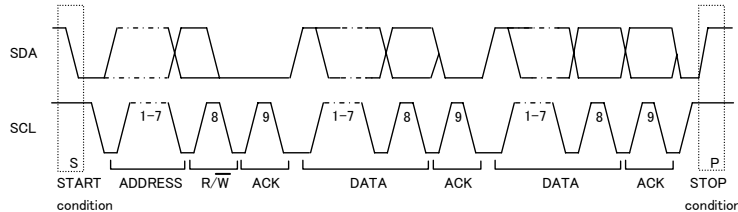


Figure 32. Data transfer timing

○Start condition (start bit recognition)

- Before executing each command, start condition (start bit) where SDA goes from 'HIGH' down to 'LOW' when SCL is 'HIGH' is necessary.
- This IC always detects whether SDA and SCL are in start condition (start bit) or not, therefore, unless this condition is satisfied, any command is executed.

○Stop condition (stop bit recognition)

- Each command can be ended by SDA rising from 'LOW' to 'HIGH' when stop condition (stop bit), namely, SCL is 'HIGH'

○Acknowledge (ACK) signal

- This acknowledge (ACK) signal is a software rule to show whether data transfer has been made normally or not. In master and slave, the device (μ-COM at slave address input of write command, read command, and this IC at data output of read command) at the transmitter (sending) side releases the bus after output of 8bit data.
- The device (this IC at slave address input of write command, read command, and μ-COM at data output of read command) at the receiver (receiving) side sets SDA 'LOW' during 9 clock cycles, and outputs acknowledge signal (ACK signal) showing that it has received the 8bit data.
- This IC, after recognizing start condition and slave address (8bit), outputs acknowledge signal (ACK signal) 'LOW'.
- Each write action outputs acknowledge signal (ACK signal) 'LOW', at receiving 8bit data (word address and write data).
- Each read action outputs 8bit data (read data), and detects acknowledge signal (ACK signal) 'LOW'.
- When acknowledge signal (ACK signal) is detected, and stop condition is not sent from the master (μ-COM) side, this IC continues data output. When acknowledge signal (ACK signal) is not detected, this IC stops data transfer, and recognizes stop condition (stop bit), and ends read action. And this IC gets in standby status.

○Device addressing

- Output slave address after start condition from master.
- The significant 4 bits of slave address are used for recognizing a device type.  
The device code of this IC is fixed to '1010'.
- The most insignificant bit (エラー! 編集中のフィールド コードからは、オブジェクトを作成できません。 ---エラー! 編集中のフィールド コードからは、オブジェクトを作成できません。 ) of slave address is used for designating write or read action, and is as shown below.

Setting エラー! 編集中のフィールド コードからは、オブジェクトを作成できません。 to 0 --- write (setting 0 to word address setting of random read)

Setting エラー! 編集中のフィールド コードからは、オブジェクトを作成できません。 to 1 --- read

Type	Slave address
BU99901GUZ-W	1 1 1 0 0 0 0 エラー! 編集中のフィールド コードからは、オブジェクトを作成できません。

●Write Command

○Write cycle

- Arbitrary data is written to EEPROM. When to write only 1 byte, byte write normally used, and when to write continuous data of 2 bytes or more, simultaneous write is possible by page write cycle. The maximum number of write bytes is specified per device of each capacity. Up to 32 arbitrary bytes can be written.

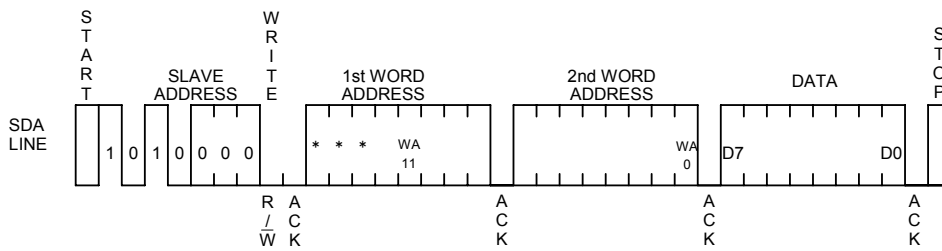


Figure 33. Byte write cycle

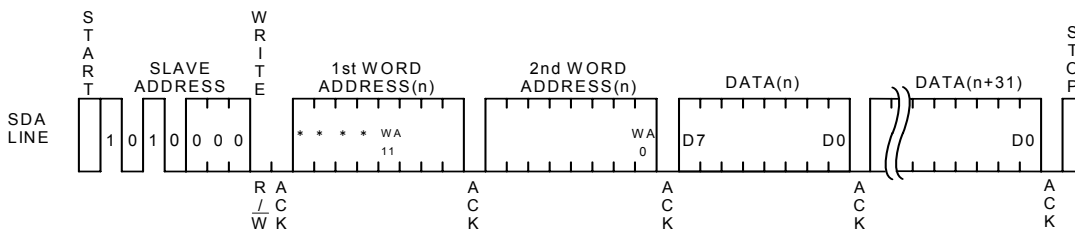


Figure 34. Page write cycle

- Data is written to the address designated by word address (n-th address).
- By issuing stop bit after 8bit data input, write to memory cell inside starts.
- When internal write is started, command is not accepted for tWR (5ms at maximum).
- By page write cycle, the following can be written in bulk: Up to 32 bytes. (Refer to "Internal address increment in Page 15.)
- As for page write command of BU99901GUZ-W, after page select bit(PS) of slave address is designated arbitrarily, by continuing data input of 2 bytes or more, the address of insignificant 4 bits is incremented internally, and data up to 16 bytes can be written.
- As for page write cycle of BU99901GUZ-W, after the significant 7 bits of word address, are designated arbitrarily, by continuing data input of 2 bytes or more, the address of insignificant 5 bits is incremented internally, and data up to 32 bytes can be written.

Notes on write cycle continuous input

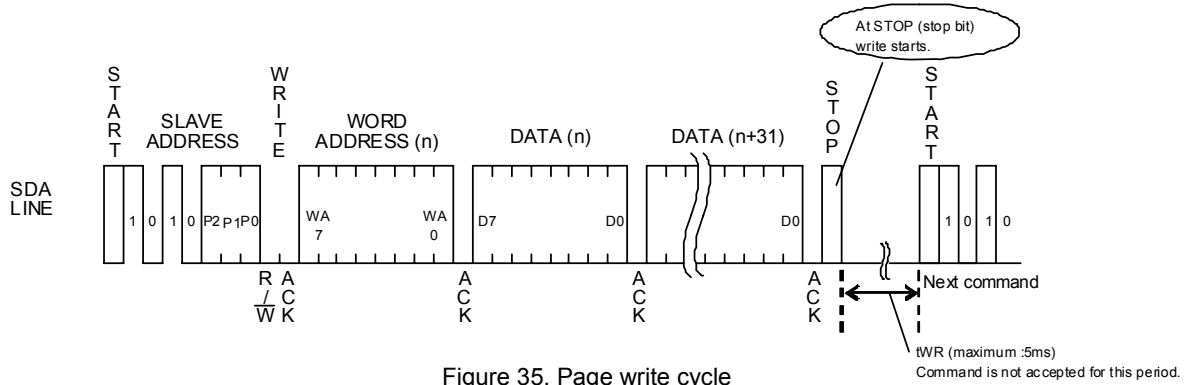


Figure 35. Page write cycle

Notes on page write cycle

List of numbers of page write

Number of pages	32Byte
Product number	BU99901GUZ-W

The above numbers are maximum bytes for respective types. Any bytes below these can be written.

In the case of BU99901GUZ-W, 1 page = 32bytes, but the page write cycle write time is 5ms at maximum for 32byte bulk write.

It does not stand 5ms at maximum × 32byte = 160ms(Max.).

Internal address increment  
Page write mode

WA11	WA5	WA4	WA3	WA2	WA1	WA0	
0	0	0	0	0	0	0	increment
0	0	0	0	0	0	1	
0	0	0	0	0	1	0	

IEh	0	0	1	1	1	1	0	
0	0	0	1	1	1	1	1	increment
0	0	0	0	0	0	0	0	
0	0	0	0	0	0	0	0	

Significant bit is fixed.  
No digit up

For example, when it is started from address 1Eh, therefore, increment is made as below, 1Eh→1Fh→00h→01h···, which please note.

\* 1Eh···16 in hexadecimal, therefore, 00011110 becomes a binary number.

Write protect (WP) terminal

Write protect (WP) function

When WP terminal is set Vcc (H level), data rewrite of all address is prohibited. When it is set GND (L level), data rewrite of all address is enabled. Be sure to connect this terminal to Vcc or GND, or control it to H level or L level. Do not use it open.

At extremely low voltage at power ON/OFF, by setting the WP terminal 'H', mistake write can be prevented. During tWR, set the WP terminal always to 'L'. If it is set 'H', write is forcibly terminated

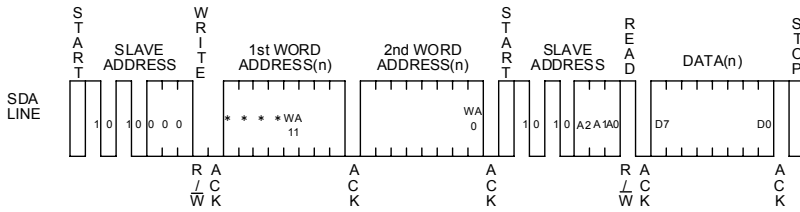
●Read Command

○Read cycle

Data of EEPROM is read. In read cycle, there are random read cycle and current read cycle.

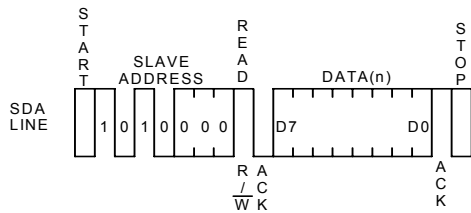
Random read cycle is a command to read data by designating address, and is used generally.

Current read cycle is a command to read data of internal address register without designating address, and is used when to verify just after write cycle. In both the read cycles, sequential read cycle is available, and the next address data can be read in succession.



It is necessary to input 'H' to the last ACK.

Figure 36. Random read cycle



It is necessary to input 'H' to the last ACK.

Figure 37. Current read cycle

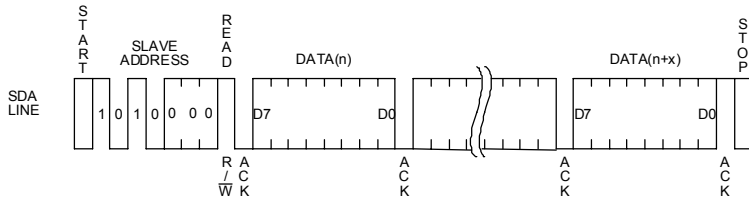


Figure 38. Sequential read cycle (in the case of current read cycle)

- In random read cycle, data of designated word address can be read.
- When the command just before current read cycle is random read cycle, current read cycle (each including sequential read cycle), data of incremented last read address (n)-th address, i.e., data of the (n+1)-th address is output.
- When ACK signal 'LOW' after D0 is detected, and stop condition is not sent from master (μ-COM) side, the next address data can be read in succession.
- Read cycle is ended by stop condition where 'H' is input to ACK signal after D0 and SDA signal is started at SCL signal 'H'.
- When 'H' is not input to ACK signal after D0, sequential read gets in, and the next data is output. Therefore, read command cycle cannot be ended. When to end read command cycle, be sure input stop condition to input 'H' to ACK signal after D0, and to start SDA at SCL signal 'H'.
- Sequential read is ended by stop condition where 'H' is input to ACK signal after arbitrary D0 and SDA is started at SCL signal 'H'.



●Software reset

Software reset is executed when to avoid malfunction after power on, and to reset during command input. Software reset has several kinds, and 3 kinds of them are shown in the figure below. (Refer to Figure 39(a), Figure 39(b), Figure 39(c).) In dummy clock input area, release the SDA bus ('H' by pull up). In dummy clock area, ACK output and read data '0' (both 'L' level) may be output from EEPROM, therefore, if 'H' is input forcibly, output may conflict and over current may flow, leading to instantaneous power failure of system power source or influence upon devices.

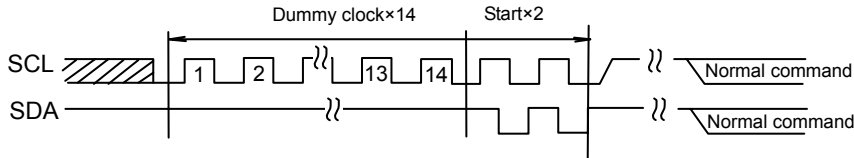


Figure 39-(a). The case of 14 Dummy clock + START + START+ command input

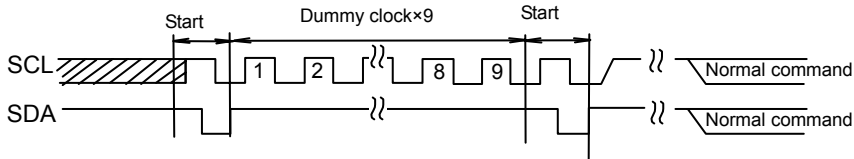


Figure 39-(b). The case of START+9 Dummy clock + START + command input

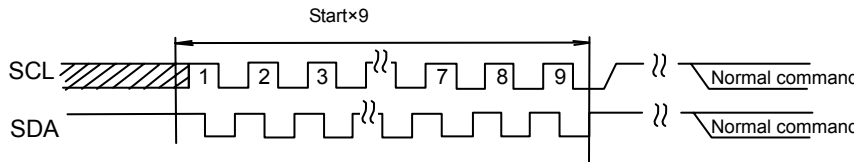


Figure 39-(c). START x 9 + command input

\* Start command from START input.

●Acknowledge polling

During internal write, all input commands are ignored, therefore ACK is not sent back. During internal automatic write execution after write cycle input, next command (slave address) is sent, and if the first ACK signal sends back 'L', then it means end of write action, while if it sends back 'H', it means now in writing. By use of acknowledge polling, next command can be executed without waiting for  $t_{WR} = 5ms$ .

When to write continuously, エラー! 編集中のフィールド コードからは、オブジェクトを作成できません。 = 0, when to carry out current read cycle after write, slave address エラー! 編集中のフィールド コードからは、オブジェクトを作成できません。 = 1 is sent, and if ACK signal sends back 'L', then execute word address input and data so forth.

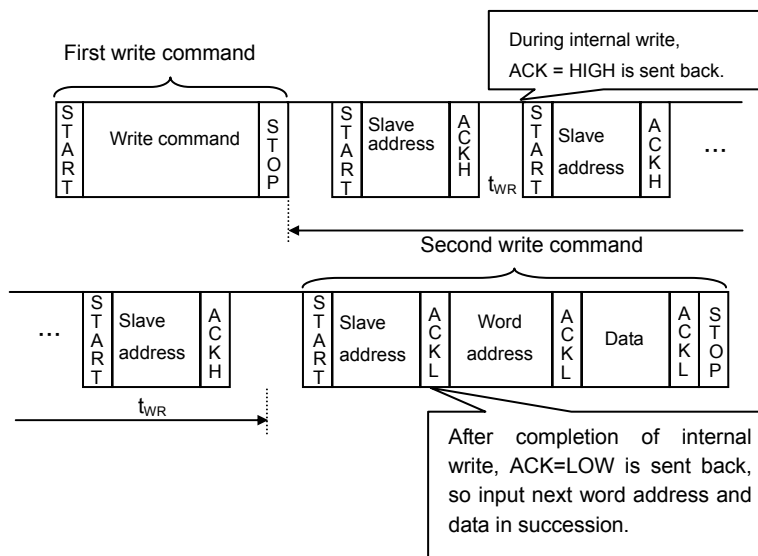


Figure 40. Case to continuously write by acknowledge polling

●WP valid timing (write cancel)

WP is usually fixed to 'H' or 'L', but when WP is used to cancel write cycle and so forth, pay attention to the following WP valid timing. During write cycle execution, in cancel valid area, by setting WP='H', write cycle can be cancelled. In both byte write cycle and page write cycle, the area from the first start condition of command to the rise of clock to taken in D0 of data(in page write cycle, the first byte data) is cancel invalid area.

WP input in this area becomes Don't care. Set the setup time to rise of D0 taken 100ns or more. The area from the rise of SCL to take in D0 to the end of internal automatic write (tWR) is cancel valid area. And, when it is set WP='H' during tWR, write is ended forcibly, data of address under access is not guaranteed, therefore, write it once again.(Refer to Figure 41.) After execution of forced end by WP standby status gets in, so there is no need to wait for tWR (5ms at maximum).

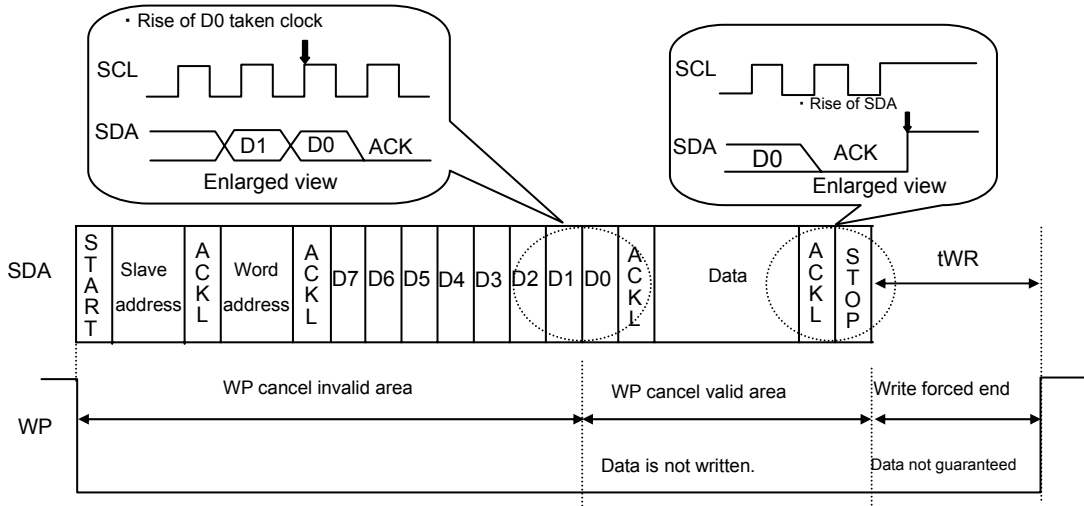


Figure 41. WP valid timing

●Command cancel by start condition and stop condition

During command input, by continuously inputting start condition and stop condition, command can be cancelled. (Refer to Figure 42.)

However, in ACK output area and during data read, SDA bus may output 'L', and in this case, start condition and stop condition cannot be input, so reset is not available. Therefore, execute software reset. And when command is cancelled by start, stop condition, during random read cycle, sequential read cycle, or current read cycle, internal setting address is not determined, therefore, it is not possible to carry out current read cycle in succession. When to carry out read cycle in succession, carry out random read cycle.

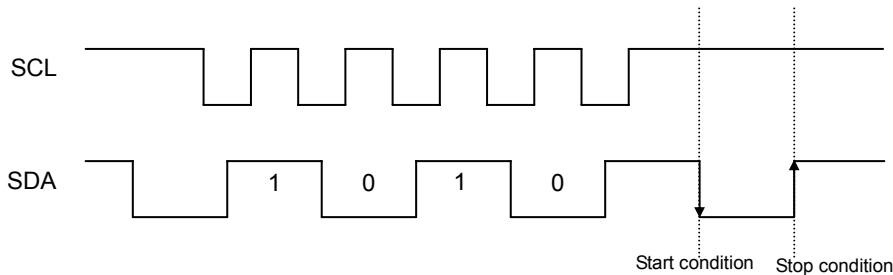


Figure 42. Case of cancel by start, stop condition during slave address input

●Cautions on microcontroller connection

○Rs

In I<sup>2</sup>C BUS, it is recommended that SDA port is of open drain input/output. However, when to use CMOS input / output of tri state to SDA port, insert a series resistance Rs between the pull up resistance Rpu and the SDA terminal of EEPROM. This is controls over current that occurs when PMOS of the microcontroller and NMOS of EEPROM are turned ON simultaneously. Rs also plays the role of protection of SDA terminal against surge. Therefore, even when SDA port is open drain input/output, Rs can be used.

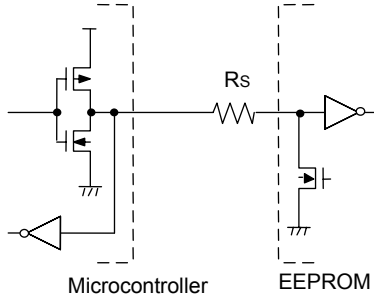


Figure 43. I/O circuit diagram

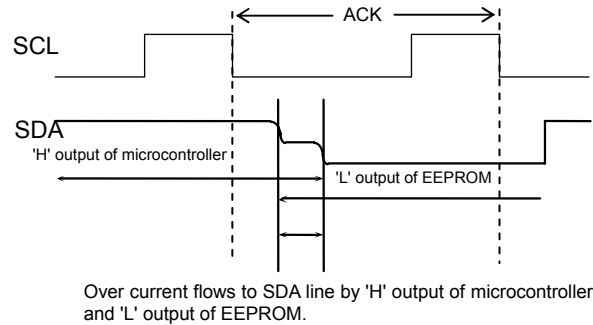


Figure 44. Input/output collision timing

○Maximum value of Rs

The maximum value of Rs is determined by following relations.

- (1) SDA rise time to be determined by the capacity (CBUS) of bus line of Rpu and SDA should be tR or below. And AC timing should be satisfied even when SDA rise time is late.
- (2) The bus electric potential  $\text{Ⓐ}$  to be determined by Rpu and Rs the moment when EEPROM outputs 'L' to SDA bus should sufficiently secure the input 'L' level (VIL) of microcontroller including recommended noise margin 0.1Vcc.

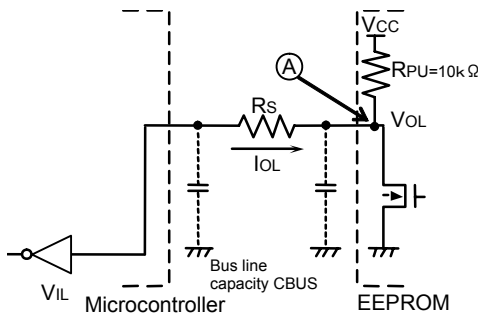


Figure 45. I/O circuit diagram

$$\frac{(V_{CC}-V_{OL}) \times R_s}{R_{PU}+R_s} + V_{OL} + 0.1V_{CC} \leq V_{IL}$$

$$\therefore R_s \leq \frac{V_{IL}-V_{OL}-0.1V_{CC}}{1.1V_{CC}-V_{IL}} \times R_{PU}$$

Example) When VCC=3V, VIL=0.3VCC, VOL=0.4V, RPU=10kΩ,

$$\begin{aligned} \text{from(2), } R_s &\leq \frac{0.3 \times 3 - 0.4 - 0.1 \times 3}{1.1 \times 3 - 0.3 \times 3} \times 10 \times 10^3 \\ &\leq 0.835 \text{ [k}\Omega\text{]} \end{aligned}$$

○Maximum value of Rs

The minimum value of Rs is determined by over current at bus collision. When over current flows, noises in power source line, and instantaneous power failure of power source may occur. When allowable over current is defined as I, the following relation must be satisfied. Determine the allowable current in consideration of impedance of power source line in set and so forth. Set the over current to EEPROM 10mA or below.

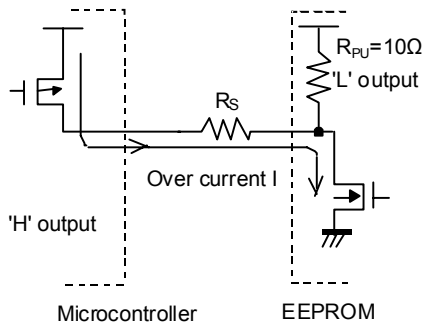


Figure 46. I/O circuit diagram

$$\frac{V_{CC}}{R_s} \leq I$$

$$\therefore R_s \geq \frac{V_{CC}}{I}$$

Example) When VCC=3V, I=10mA

$$\begin{aligned} R_s &\geq \frac{3}{10 \times 10^{-3}} \\ &\geq 300 \text{ [}\Omega\text{]} \end{aligned}$$

●I<sup>2</sup>C BUS input / output circuit

○Input (SCL, SDA)

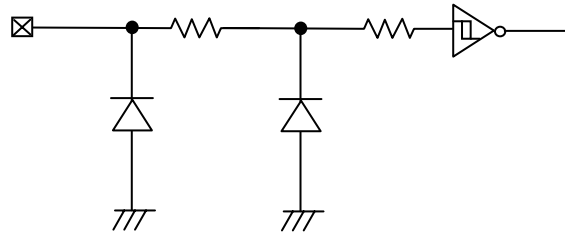


Figure 47. Input pin circuit diagram

○Input/Output (SDA)

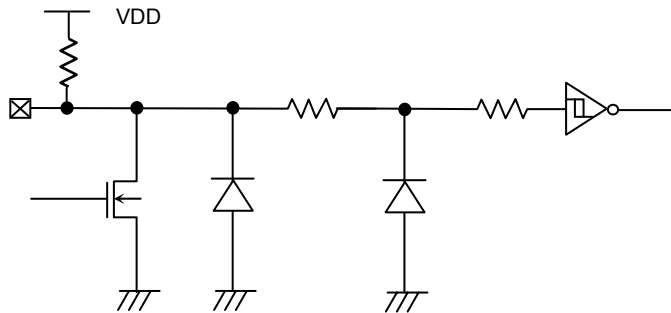


Figure 48. Input/output pin circuit diagram

●Notes on power ON

At power on, in IC internal circuit and set, Vcc rises through unstable low voltage area, and IC inside is not completely reset, and malfunction may occur. To prevent this, functions of POR circuit and LVCC circuit are equipped. To assure the action, observe the following condition at power on.

1. Set SDA = 'H' and SCL = 'L' or 'H'
2. Start power source so as to satisfy the recommended conditions of tR, tOFF, and Vbot for operating POR circuit.

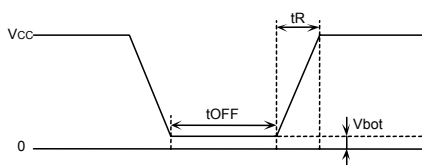


Figure 49. Rise waveform diagram

Recommended conditions of tR,tOFF,Vbot		
tR	tOFF	Vbot
10ms or below	10ms or longer	0.3V or below
100ms or below	10ms or longer	0.2V or below

3. Set SDA and SCL so as not to become 'Hi-Z'.

When the above conditions 1 and 2 cannot be observed, take the following countermeasures.

a) In the case when the above conditions 1 cannot be observed. When SDA becomes 'L' at power on.

→Control SCL and SDA as shown below, to make SCL and SDA, 'H' and 'H'.

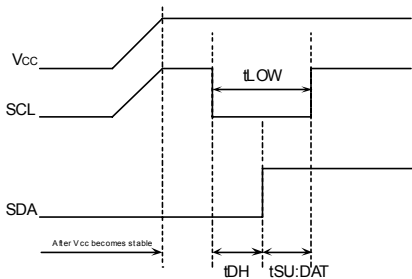


Figure 50. When SCL='H' and SDA='L'

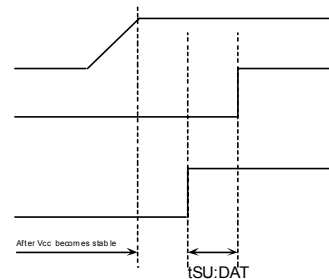


Figure 51. When SCL='H' and SDA='L'

b) In the case when the above condition 2 cannot be observed.

→After power source becomes stable, execute software reset(Page17).

c) In the case when the above conditions 1 and 2 cannot be observed.

→Carry out a), and then carry out b).

**●Low voltage malfunction prevention function**

LVCC circuit prevents data rewrite action at low power, and prevents wrong write.  
At LVCC voltage (Typ. =1.2V) or below, it prevent data rewrite.

**●Vcc noise countermeasures**

○Bypass capacitor

When noise or surge gets in the power source line, malfunction may occur, therefore, for removing these, it is recommended to attach a bypass capacitor (0.1 $\mu$ F) between IC Vcc and GND. At that moment, attach it as close to IC as possible. And, it is also recommended to attach a bypass capacitor between board Vcc and GND.

**●Notes for use**

- (1) Described numeric values and data are design representative values, and the values are not guaranteed.
- (2) We believe that application circuit examples are recommendable, however, in actual use, confirm characteristics further sufficiently. In the case of use by changing the fixed number of external parts, make your decision with sufficient margin in consideration of static characteristics and transition characteristics and fluctuations of external parts and our LSI.
- (3) Absolute maximum ratings  
If the absolute maximum ratings such as impressed voltage and action temperature range and so forth are exceeded, LSI may be destructed. Do not impress voltage and temperature exceeding the absolute maximum ratings. In the case of fear exceeding the absolute maximum ratings, take physical safety countermeasures such as fuses, and see to it that conditions exceeding the absolute maximum ratings should not be impressed to LSI.
- (4) GND electric potential  
Set the voltage of GND terminal lowest at any action condition. Make sure that each terminal voltage is lower than that of GND terminal.
- (5) Terminal design  
In consideration of permissible loss in actual use condition, carry out heat design with sufficient margin.
- (6) Terminal to terminal shortcircuit and wrong packaging  
When to package LSI onto a board, pay sufficient attention to LSI direction and displacement. Wrong packaging may destruct LSI. And in the case of shortcircuit between LSI terminals and terminals and power source, terminal and GND owing to foreign matter, LSI may be destructed.
- (7) Use in a strong electromagnetic field may cause malfunction, therefore, evaluate design sufficiently.

**Status of this document**

The Japanese version of this document is formal specification. A customer may use this translation version only for a reference to help reading the formal version.

If there are any differences in translation version of this document formal version takes priority.

●Ordering Information

B U 9 9 9 0 1 G U Z - W

E 2

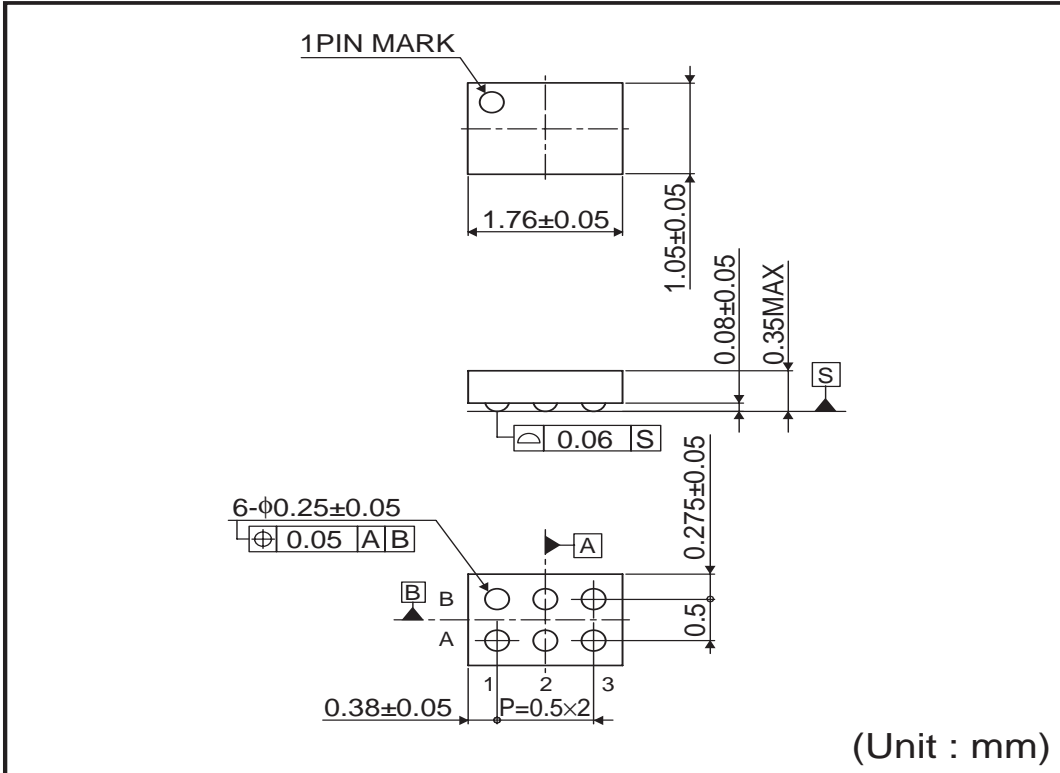
Part Number

Package  
GUZ: VCSP30L1(BU99901GUZ-W)

Packaging and forming specification  
E2: Embossed tape and reel

●Physical Dimension Tape and Reel Information

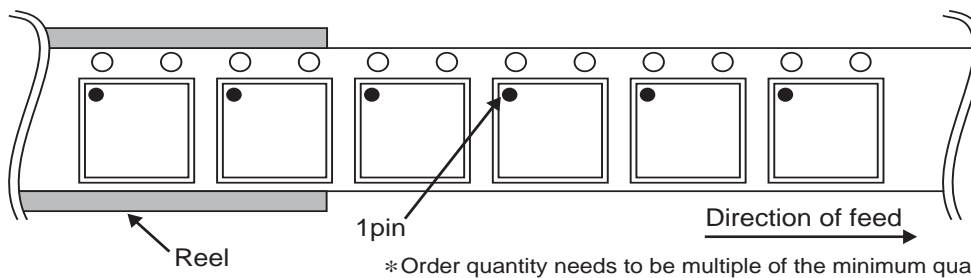
VCSP30L1(BU99901GUZ-W)



(Unit : mm)

<Tape and Reel information>

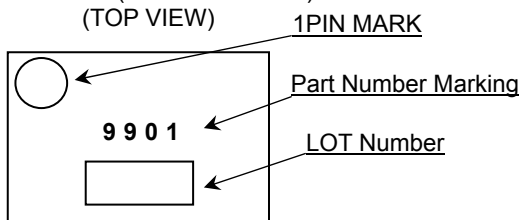
Tape	Embossed carrier tape (heat sealing method)
Quantity	3000pcs
Direction of feed	E2 ( The direction is the 1 pin of product is at the upper left when you hold reel on the left hand and you pull out the tape on the right hand )



\*Order quantity needs to be multiple of the minimum quantity.

●Marking Diagram

VCSP30L1(BU99901GUZ-W)  
(TOP VIEW)



●Revision History

Date	Revision	Changes
4.Sep.2012	001	New Release

# Notice

## ●General Precaution

- 1) Before you use our Products, you are requested to carefully read this document and fully understand its contents. ROHM shall not be in any way responsible or liable for failure, malfunction or accident arising from the use of any ROHM's Products against warning, caution or note contained in this document.
- 2) All information contained in this document is current as of the issuing date and subject to change without any prior notice. Before purchasing or using ROHM's Products, please confirm the latest information with a ROHM sales representative.

## ●Precaution on using ROHM Products

- 1) Our Products are designed and manufactured for application in ordinary electronic equipments (such as AV equipment, OA equipment, telecommunication equipment, home electronic appliances, amusement equipment, etc.). If you intend to use our Products in devices requiring extremely high reliability (such as medical equipment, transport equipment, traffic equipment, aircraft/spacecraft, nuclear power controllers, fuel controllers, car equipment including car accessories, safety devices, etc.) and whose malfunction or failure may cause loss of human life, bodily injury or serious damage to property ("Specific Applications"), please consult with the ROHM sales representative in advance. Unless otherwise agreed in writing by ROHM in advance, ROHM shall not be in any way responsible or liable for any damages, expenses or losses incurred by you or third parties arising from the use of any ROHM's Products for Specific Applications.
- 2) ROHM designs and manufactures its Products subject to strict quality control system. However, semiconductor products can fail or malfunction at a certain rate. Please be sure to implement, at your own responsibilities, adequate safety measures including but not limited to fail-safe design against the physical injury, damage to any property, which a failure or malfunction of our Products may cause. The following are examples of safety measures:
  - [a] Installation of protection circuits or other protective devices to improve system safety
  - [b] Installation of redundant circuits to reduce the impact of single or multiple circuit failure
- 3) Our Products are designed and manufactured for use under standard conditions and not under any special or extraordinary environments or conditions, as exemplified below. Accordingly, ROHM shall not be in any way responsible or liable for any damages, expenses or losses arising from the use of any ROHM's Products under any special or extraordinary environments or conditions. If you intend to use our Products under any special or extraordinary environments or conditions (as exemplified below), your independent verification and confirmation of product performance, reliability, etc. prior to use, must be necessary:
  - [a] Use of our Products in any types of liquid, including water, oils, chemicals, and organic solvents
  - [b] Use of our Products outdoors or in places where the Products are exposed to direct sunlight or dust
  - [c] Use of our Products in places where the Products are exposed to sea wind or corrosive gases, including Cl<sub>2</sub>, H<sub>2</sub>S, NH<sub>3</sub>, SO<sub>2</sub>, and NO<sub>2</sub>
  - [d] Use of our Products in places where the Products are exposed to static electricity or electromagnetic waves
  - [e] Use of our Products in proximity to heat-producing components, plastic cords, or other flammable items
  - [f] Sealing or coating our Products with resin or other coating materials
  - [g] Use of our Products without cleaning residue of flux (even if you use no-clean type fluxes, cleaning residue of flux is recommended); or Washing our Products by using water or water-soluble cleaning agents for cleaning residue after soldering
  - [h] Use of the Products in places subject to dew condensation
- 4) The Products are not subject to radiation-proof design.
- 5) Please verify and confirm characteristics of the final or mounted products in using the Products.
- 6) In particular, if a transient load (a large amount of load applied in a short period of time, such as pulse) is applied, confirmation of performance characteristics after on-board mounting is strongly recommended. Avoid applying power exceeding normal rated power; exceeding the power rating under steady-state loading condition may negatively affect product performance and reliability.
- 7) De-rate Power Dissipation (Pd) depending on Ambient temperature (Ta). When used in sealed area, confirm the actual ambient temperature.
- 8) Confirm that operation temperature is within the specified range described in the product specification.
- 9) ROHM shall not be in any way responsible or liable for failure induced under deviant condition from what is defined in this document.



● **Precaution for Mounting / Circuit board design**

- 1) When a highly active halogenous (chlorine, bromine, etc.) flux is used, the residue of flux may negatively affect product performance and reliability.
- 2) In principle, the reflow soldering method must be used; if flow soldering method is preferred, please consult with the ROHM representative in advance.

For details, please refer to ROHM Mounting specification

● **Precautions Regarding Application Examples and External Circuits**

- 1) If change is made to the constant of an external circuit, please allow a sufficient margin considering variations of the characteristics of the Products and external components, including transient characteristics, as well as static characteristics.
- 2) You agree that application notes, reference designs, and associated data and information contained in this document are presented only as guidance for Products use. Therefore, in case you use such information, you are solely responsible for it and you must exercise your own independent verification and judgment in the use of such information contained in this document. ROHM shall not be in any way responsible or liable for any damages, expenses or losses incurred by you or third parties arising from the use of such information.

● **Precaution for Electrostatic**

This Product is electrostatic sensitive product, which may be damaged due to electrostatic discharge. Please take proper caution in your manufacturing process and storage so that voltage exceeding the Products maximum rating will not be applied to Products. Please take special care under dry condition (e.g. Grounding of human body / equipment / solder iron, isolation from charged objects, setting of Ionizer, friction prevention and temperature / humidity control).

● **Precaution for Storage / Transportation**

- 1) Product performance and soldered connections may deteriorate if the Products are stored in the places where:
  - [a] the Products are exposed to sea winds or corrosive gases, including Cl<sub>2</sub>, H<sub>2</sub>S, NH<sub>3</sub>, SO<sub>2</sub>, and NO<sub>2</sub>
  - [b] the temperature or humidity exceeds those recommended by ROHM
  - [c] the Products are exposed to direct sunshine or condensation
  - [d] the Products are exposed to high Electrostatic
- 2) Even under ROHM recommended storage condition, solderability of products out of recommended storage time period may be degraded. It is strongly recommended to confirm solderability before using Products of which storage time is exceeding the recommended storage time period.
- 3) Store / transport cartons in the correct direction, which is indicated on a carton with a symbol. Otherwise bent leads may occur due to excessive stress applied when dropping of a carton.
- 4) Use Products within the specified time after opening a humidity barrier bag. Baking is required before using Products of which storage time is exceeding the recommended storage time period.

● **Precaution for Product Label**

QR code printed on ROHM Products label is for ROHM's internal use only.

● **Precaution for Disposition**

When disposing Products please dispose them properly using an authorized industry waste company.

● **Precaution for Foreign Exchange and Foreign Trade act**

Since our Products might fall under controlled goods prescribed by the applicable foreign exchange and foreign trade act, please consult with ROHM representative in case of export.

● **Precaution Regarding Intellectual Property Rights**

- 1) All information and data including but not limited to application example contained in this document is for reference only. ROHM does not warrant that foregoing information or data will not infringe any intellectual property rights or any other rights of any third party regarding such information or data. ROHM shall not be in any way responsible or liable for infringement of any intellectual property rights or other damages arising from use of such information or data.:
- 2) No license, expressly or implied, is granted hereby under any intellectual property rights or other rights of ROHM or any third parties with respect to the information contained in this document.

●Other Precaution

- 1) The information contained in this document is provided on an “as is” basis and ROHM does not warrant that all information contained in this document is accurate and/or error-free. ROHM shall not be in any way responsible or liable for any damages, expenses or losses incurred by you or third parties resulting from inaccuracy or errors of or concerning such information.
- 2) This document may not be reprinted or reproduced, in whole or in part, without prior written consent of ROHM.
- 3) The Products may not be disassembled, converted, modified, reproduced or otherwise changed without prior written consent of ROHM.
- 4) In no event shall you use in any way whatsoever the Products and the related technical information contained in the Products or this document for any military purposes, including but not limited to, the development of mass-destruction weapons.
- 5) The proper names of companies or products described in this document are trademarks or registered trademarks of ROHM, its affiliated companies or third parties.