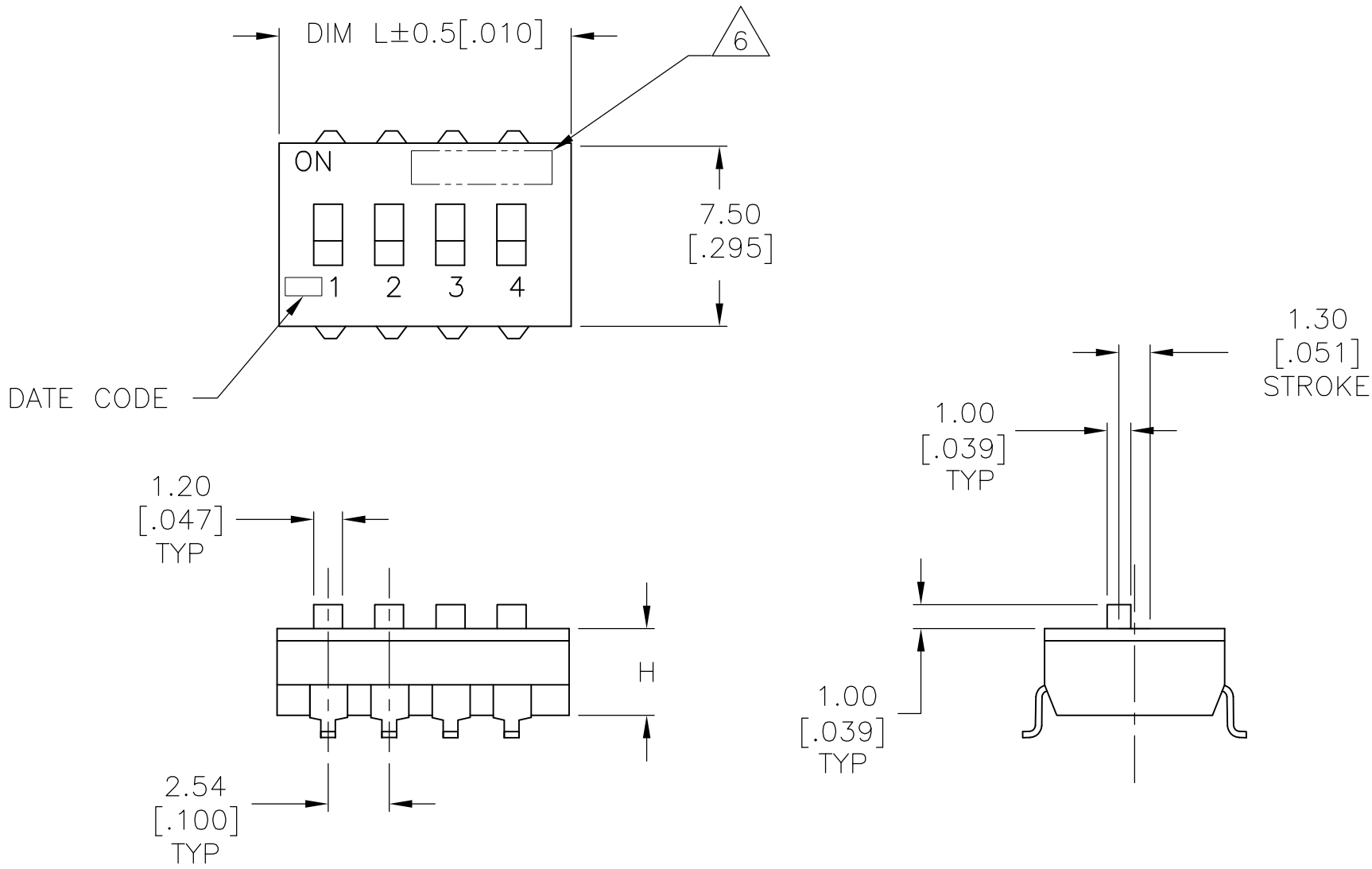


LOC	DIST	REVISIONS					
		P	LTR	DESCRIPTION	DATE	DWN	APVD
AD	0		S2	REVISED PER ECO-15-006450	28APR2015	NK	RH



SPECIFICATIONS:

MATERIAL
BASE, PPS, UL94V-0, BLACK
COVER, PPS, UL94V-0, BLACK
ACTUATOR, PA6T, UL94V-0, WHITE
FIXED CONTACT/TERMINAL, CU ALLOY-GOLD FLASH OVER NICKEL
MOVING CONTACT, CU ALLOY, PLATE-GOLD FLASH/NICKEL

ELECTRICAL
MAX CONTACT RATING SWITCHING, 100MILLIAMP @ 24 VDC
MIN CONTACT RATING SWITCHING, .1MICROAMP @ 1 MILLIVOLT
MAX CONTACT NON-SWITCHING, 1AMP @ 5 VDC
INITIAL CONTACT RESISTANCE, 50 MILLIOHMS MAX.
CONTACT RESISTANCE (AFTER ENVIRONMENTAL TEST), 100 MILLIOHMS
CONTACT RESISTANCE (AFTER GAS TEST), 300 MILLIOHMS
INSULATION RESISTANCE, 1,000 MEGOHMS MIN. @ 100 VDC
DIELECTRIC STRENGTH, 500 VAC RMS @ SEA LEVEL
LIFE EXPECTANCY, 1,000 CYCLES

MECHANICAL
OPERATING FORCE, LESS THAN 800 GRAMS
CONTACT PRESSURE, 280,000 PSI

ENVIRONMENTAL
OPERATING TEMPERATURE, -30 TO +85 DEGREES C
STORAGE TEMPERATURE, -45 TO +105 DEGREES C
CLEANING, AQUEOUS OR SOLVENT
SOLDER HEAT RESISTANCE, PER 109-201,COND B, SWITCH "OFF".
SOLDERABILITY PER JIS C 0050 & JIS C 0053

- 1 SWITCHES TO BE RECEIVED IN THE "OFF" POSITION AND PACKAGED IN CLEAR TUBES TO ACCOMMODATE AUTO-INSERTION.
- 2 TOP SURFACE TO BE CLEARLY MARKED AS SHOWN.
- 3 SWITCHES TO BE BLACK WITH WHITE ACTUATORS AND MARKINGS.
- 4 TERMINAL OPTION: OLD T&B P/N ADExxS, SA OR SB
S= OUTSIDE "L" TERMINALS; SA= INSIDE "L" TERMINALS;
SB= BUTT TERMINALS.
- 5 ALL MATERIALS AND FINISHES SHALL COMPLY WITH EU DIRECTIVE 2002/95/EC OF 27JAN2003 (ROHS).
- 6 OBSOLETE PARTS: OBSOLETE CIS STREAMLINING PER D.RENAUD/D.SINISI.
- 7 TAPE AND REEL PACKING PER PAGE 3 SPECIFICATIONS.

SEE SHEET 2 FOR PART NUMBER TABLE
AND MOUNTING OPTIONS

THIS DRAWING IS A CONTROLLED DOCUMENT.		DWN B.S.VISWESWARA	10FEB05	TE Connectivity			
DIMENSIONS: mm [INCHES]		CHK M.SARVER	-	NAME			
		APVD M.SARVER	-				
		PRODUCT SPEC	-	DIP SWITCH, ADE-SMT SERIES			
TOLERANCES UNLESS OTHERWISE SPECIFIED:		APPLICATION SPEC	-				
0 PLC ± - 1 PLC ± - 2 PLC ± 0.30[0.012] 3 PLC ± - 4 PLC ± - ANGLES ± -		WEIGHT	-	SIZE A2	CAGE CODE -	DRAWING NO C=1825058	RESTRICTED TO -
MATERIAL -		CUSTOMER DRAWING		SCALE 4:1	SHEET 1 OF 3	REV S2	

D

D

C

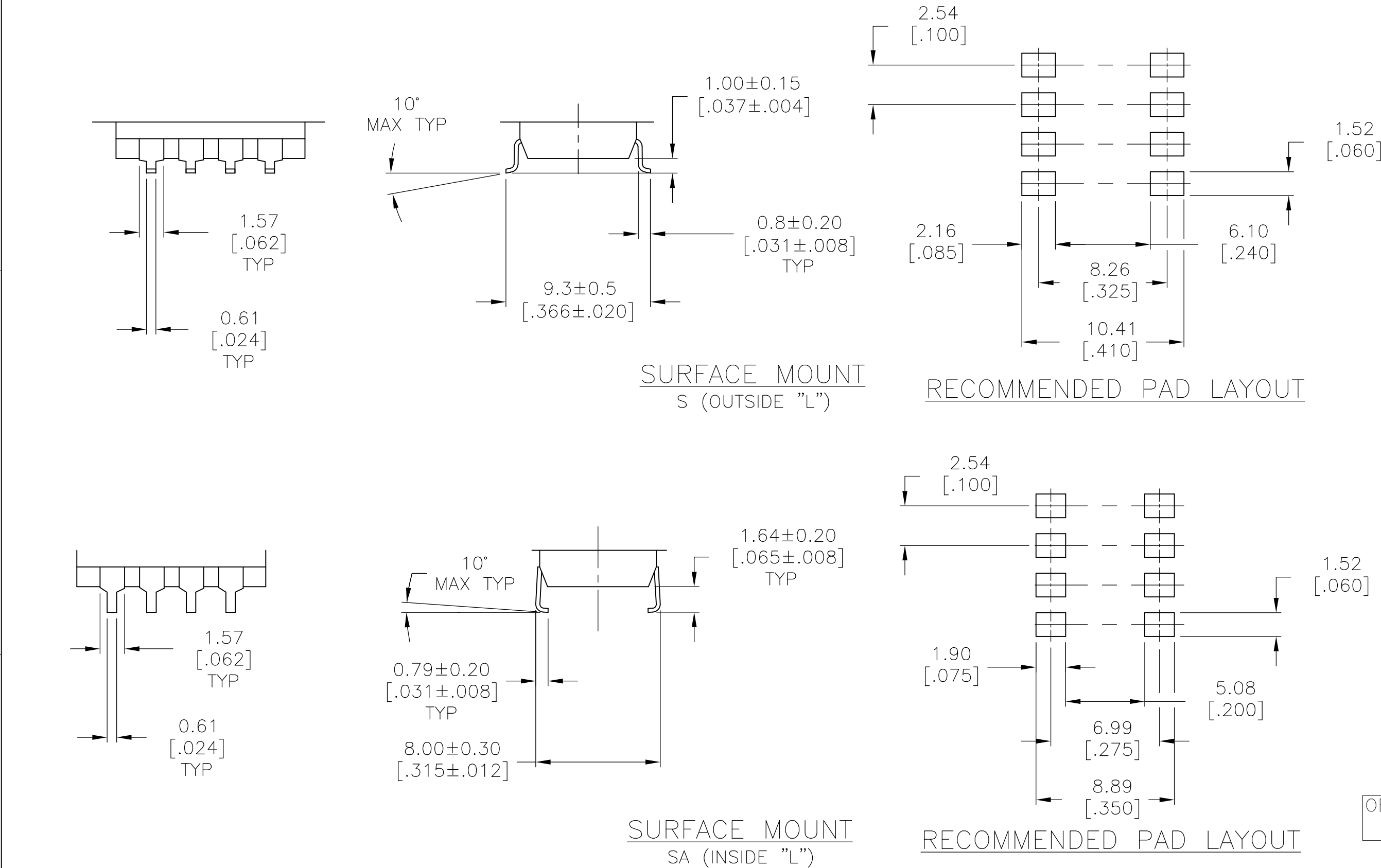
C

B

B

A

A



ADE12STR04	3.61	[.142]	32.51	[1.280]	12	4-1825058-1
ADE10STR04	3.50	[.138]	27.30	[1.075]	10	4-1825058-0
ADE09STR04	3.50	[.138]	24.54	[.978]	9	3-1825058-9
ADE08STR04	3.50	[.138]	22.30	[.878]	8	3-1825058-8
ADE07STR04	3.50	[.138]	19.76	[.778]	7	3-1825058-7
ADE06STR04	3.50	[.138]	17.22	[.678]	6	3-1825058-6
ADE05STR04	3.50	[.138]	14.68	[.578]	5	3-1825058-5
ADE04STR04	3.50	[.138]	12.14	[.478]	4	3-1825058-4
ADE03STR04	3.50	[.138]	9.60	[.378]	3	3-1825058-3
ADE02STR04	3.50	[.138]	7.00	[.276]	2	3-1825058-2
ADE04SATR04	3.50	[.138]	12.14	[.478]	4	3-1825058-1
ADE12SB04	3.61	[.142]	32.51	[1.280]	12	3-1825058-0
ADE12SA04	3.61	[.142]	32.51	[1.280]	12	2-1825058-9
ADE12S04	3.61	[.142]	32.51	[1.280]	12	2-1825058-8
ADE10SB04	3.50	[.138]	27.30	[1.075]	10	2-1825058-7
ADE10SA04	3.50	[.138]	27.30	[1.075]	10	2-1825058-6
ADE10S04	3.50	[.138]	27.30	[1.075]	10	2-1825058-5
ADE09SB04	3.50	[.138]	24.54	[.978]	9	2-1825058-4
ADE09SA04	3.50	[.138]	24.54	[.978]	9	2-1825058-3
ADE09S04	3.50	[.138]	24.54	[.978]	9	2-1825058-2
ADE08SB04	3.50	[.138]	22.30	[.878]	8	2-1825058-1
ADE08SA04	3.50	[.138]	22.30	[.878]	8	2-1825058-0
ADE08S04	3.50	[.138]	22.30	[.878]	8	1-1825058-9
ADE07SB04	3.50	[.138]	19.76	[.778]	7	1-1825058-8
ADE07SA04	3.50	[.138]	19.76	[.778]	7	1-1825058-7
ADE07S04	3.50	[.138]	19.76	[.778]	7	1-1825058-6
ADE06SB04	3.50	[.138]	17.22	[.678]	6	1-1825058-5
ADE06SA04	3.50	[.138]	17.22	[.678]	6	1-1825058-4
ADE06S04	3.50	[.138]	17.22	[.678]	6	1-1825058-3
ADE05SB04	3.50	[.138]	14.68	[.578]	5	1-1825058-2
ADE05SA04	3.50	[.138]	14.68	[.578]	5	1-1825058-1
ADE05S04	3.50	[.138]	14.68	[.578]	5	1-1825058-0
ADE04SB04	3.50	[.138]	12.14	[.478]	4	1825058-9
ADE04SA04	3.50	[.138]	12.14	[.478]	4	1825058-8
ADE04S04	3.50	[.138]	12.14	[.478]	4	1825058-7
ADE03SB04	3.50	[.138]	9.60	[.378]	3	1825058-6
ADE03SA04	3.50	[.138]	9.60	[.378]	3	1825058-5
ADE03S04	3.50	[.138]	9.60	[.378]	3	1825058-4
ADE02SB04	3.50	[.138]	7.00	[.276]	2	1825058-3
ADE02SA04	3.50	[.138]	7.00	[.276]	2	1825058-2
ADE02S04	3.50	[.138]	7.00	[.276]	2	1825058-1
T&B P/N	DIM H		DIM L	POSITION	PART NO.	

THIS DRAWING IS A CONTROLLED DOCUMENT.

DIMENSIONS:
mm [INCHES]

TOLERANCES UNLESS OTHERWISE SPECIFIED:

0 PLC	±	–
1 PLC	±	–
2 PLC	±	0.30[.012]
3 PLC	±	–
4 PLC	±	–
ANGLES	±	–

MATERIAL

–

FINISH

–

DWN
B.S.VISWESWARA

CHK
M.SARVER

APVD
M.SARVER

PRODUCT SPEC

APPLICATION SPEC

–

WEIGHT

–

CUSTOMER DRAWING

10FEB05

–

–

–

–

–

–

–

–

–

–

–

TE Connectivity

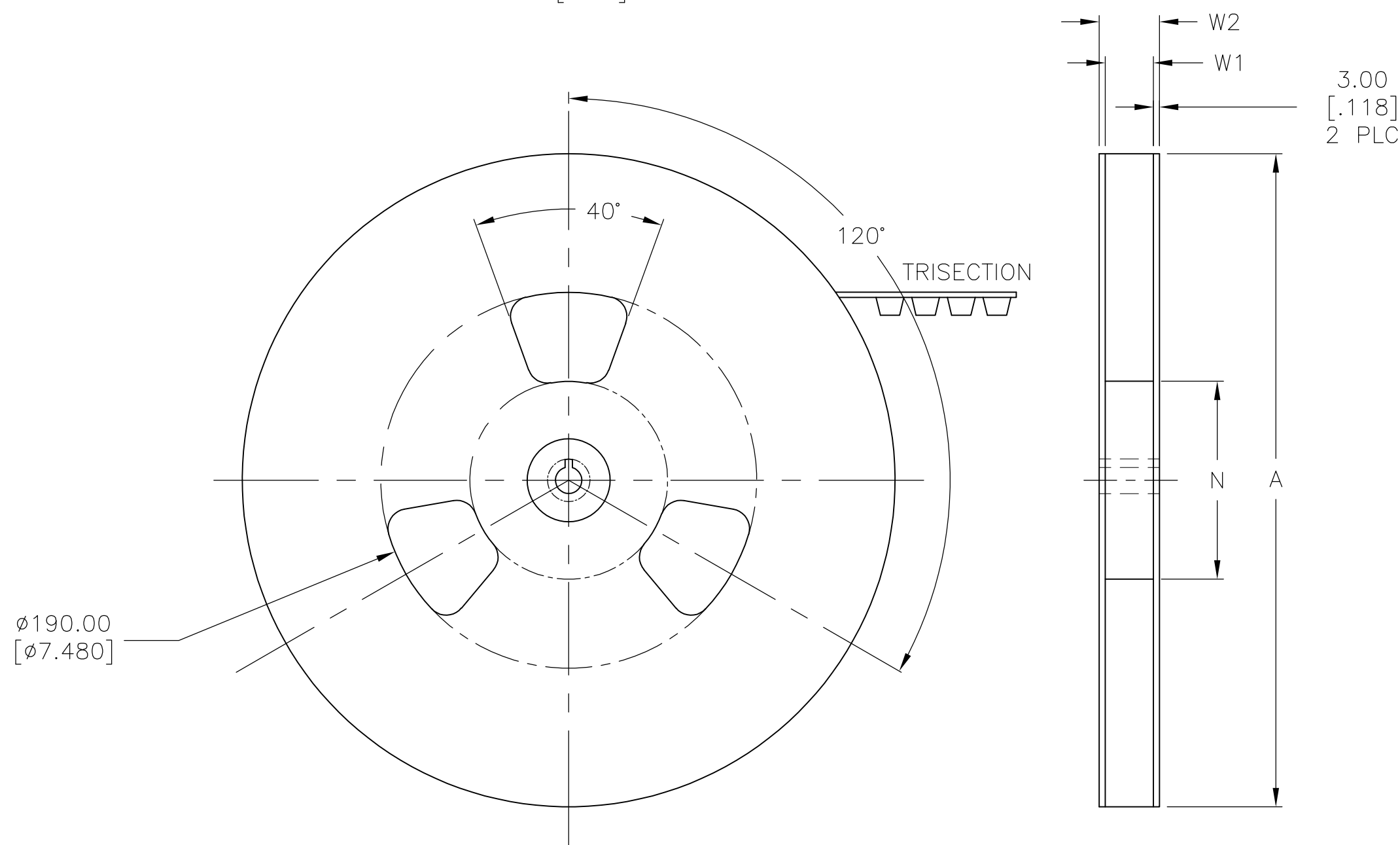
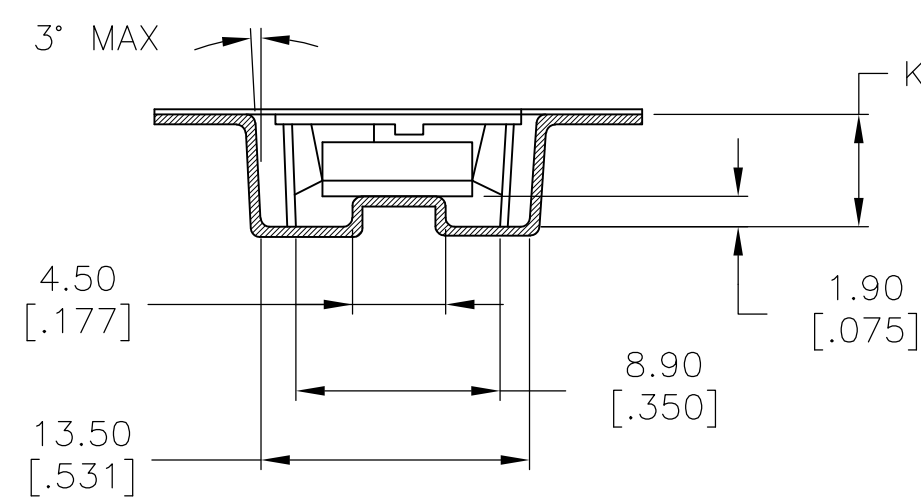
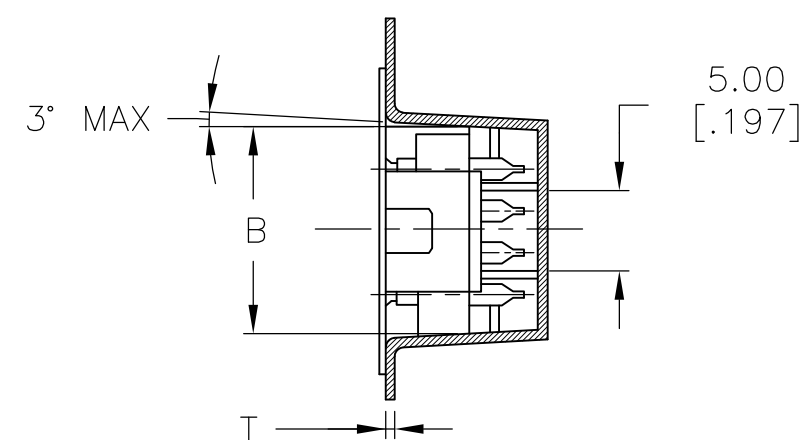
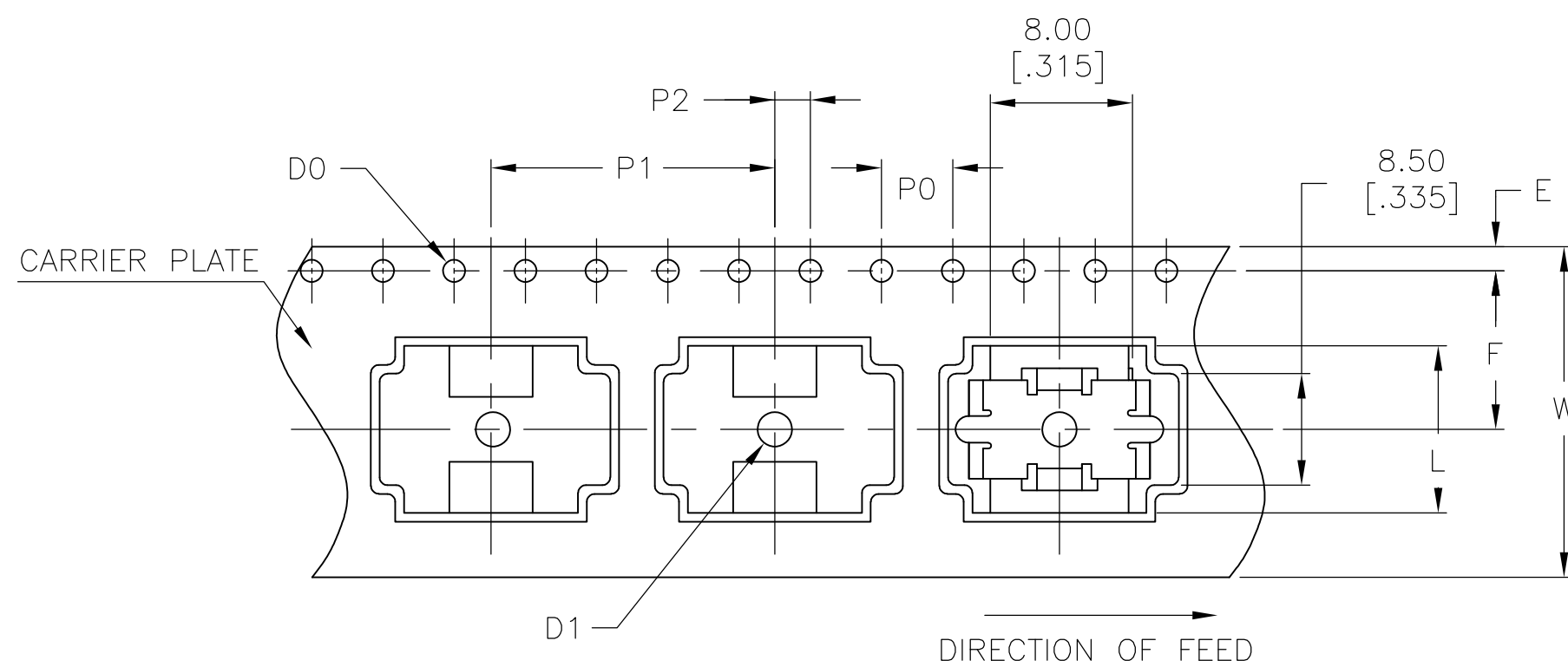
NAME

DIP SWITCH, ADE-SMT SERIES

SIZE	CAGE CODE	DRAWING NO	RESTRICTED TO
A2	–	1825058	–

SCALE	4:1	SHEET	2 OF 3	REV	S2
-------	-----	-------	--------	-----	----

LOC	DIST	REVISIONS					
AD	0	P	LTR	DESCRIPTION	DATE	DWN	APVD
			—	SEE SHEET 1	—	—	—


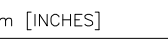


	DESCRIPTION	MATERIAL	DIMENSION	FINISH	REMARKS
1	REEL	SIDE: CARDBOARD CORE: STYLOFOAM	MENTIONED BELOW		
2	EMBOSSSED TAPE	—	MENTIONED BELOW	ANTISTATIC	BLACK
3	TOP COVER TAPE	—	MENTIONED BELOW	ANTISTATIC	TRANSPARENT

4P	ø330.00±2.10 [12.992±.082]	ø100 [3.940]	24.40 $+^{2.00}_0$ [.960 $+^{.790}_{.000}$]	30.40 [1.997]
NO OF POSITION	A	N (MIN)	W1	W2 (MAX)

4P	$\phi 1.50^{+0.10}_0$ [$\phi .059^{+.003}_{.000}$]	4.00 ± 0.10 [.157 \pm .003]	16.00 ± 0.10 [.629 \pm .003]	2.00 ± 0.15 [.078 \pm .005]	11.50 ± 0.10 [.453 \pm .003]	7.40 ± 0.10 [.291 \pm .003]
NO OF POSITION	D1	P0	P1	P2	F	K

4P	24.00±0.30 [.944±.011]	12.90±0.10 [.507±.003]	1.75±0.10 [.068±.003]	0.50±0.05 [.020±.001]	12.14±0.50 [.477±.020]	ø 1.50 ^{+0.10} ₀ [ø.059 ^{+0.03} _{.000}]
NO OF POSITION	W	B	E	T	L	DO

THIS DRAWING IS A CONTROLLED DOCUMENT.		DWN B.S.VISWESWARA		10FEB05		 TE Connectivity									
DIMENSIONS: mm [INCHES]		CHK M.SARVER		—											
		TOLERANCES UNLESS OTHERWISE SPECIFIED:		NAME											
		0 PLC ± —													
		1 PLC ± —													
		2 PLC ± 0.30[.012]													
3 PLC ± —		PRODUCT SPEC		DIP SWITCH, ADE-SMT SERIES											
4 PLC ± —		—													
ANGLES		APPLICATION SPEC													
FINISH		—													
MATERIAL		WEIGHT		SIZE		CAGE CODE		DRAWING NO		RESTRICTED TO					
—		—		A2		—		C=1825058		—					
CUSTOMER DRAWING										SCALE 4:1		SHEET 3 of 3		REV S2	

Mouser Electronics

Authorized Distributor

Click to View Pricing, Inventory, Delivery & Lifecycle Information:

[TE Connectivity:](#)

[ADE0904](#)