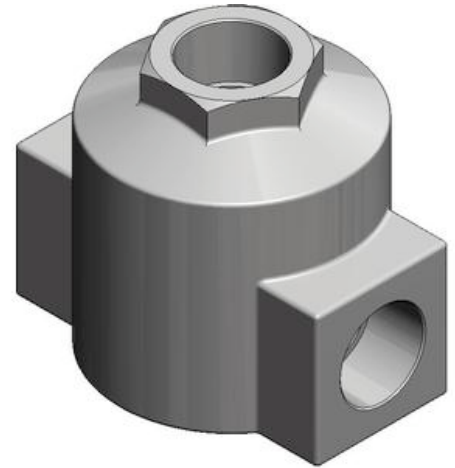


AQ400, Quick Exhaust Valve

The AQ series quick exhaust valve offers high flow capacity in a compact and lightweight body. The series is available in lip, diaphragm and an inline body shape with built-in one-touch fittings. The AQ is available in a variety of port sizes.

- Fluid: air
- Port size: 1/4, 3/8, 1/2 (PT)
- Maximum working pressure: 1.5~9 kgf/cm² (150~990kPa)



Configuration Options

AQ400 - 04

Part Number is **Complete**



Select Product Options

Select values from the drop down lists or make appropriate selections to configure the part number.

Port Size



Options in:

- **Gray** are not compatible with other selected option value.
- **Red** conflict with another selected option value.
- **Amber** are not recommended.