

4-1825136-3 Product Details

[Share](#) [Print](#) [Email](#)


4-1825136-3
(A101SYAQ04)

TE Internal Number: 4-1825136-3

 **Active**

Toggle Switches

 Always EU RoHS/ELV Compliant (Statement of Compliance)

Product Highlights:

- A Series
- Single Pole - Double Throw Configuration (Pole-Throw)
- Current Rating = 5 A
- Mount Style = Through-Hole
- Termination Type = Right Angle

[View all Features](#)

Quick Links

- ▶ [Pricing & Availability](#)
- ▶ [Search for Tooling](#)
- ▶ [Product Feature Selector](#)
- ▶ [Contact Us About This Product](#)

[Add to My Part List](#)

[Request Sample](#)

[Find Similar Products](#)

[Buy Product](#)

Documentation & Additional Information

Product Drawings:

- [GEMINI A SERIES TOGGLE SWITCH, SINGLE POLE, 2 POSITI...](#) (PDF, English)

Catalog Pages/Data Sheets:

- [SWITCHES_CORE_PROGRAM_CATALOG](#) (PDF, English)
- [GEMINI_SERIES_SWITCHES_QUICK_REF_GUIDE_2-1773458-5](#) (PDF, English)

Product Specifications:

- None Available

Application Specifications:

- None Available

Instruction Sheets:

- None Available

CAD Files:

- None Available

[List all Documents](#)

Additional Information:

- [Product Line Information](#)

Additional Product Images:

- [Product Photo](#)

Related Products:

- [Tooling](#)

Product Features (Please use the Product Drawing for all design activity)

Product Type Features:

- Series = A
- Termination Type = Right Angle

Electrical Characteristics:

- Current Rating (A) = 5

Termination Features:

- Seal Type = Terminal Seal (epoxy)

Body Features:

- Mount Style = Through-Hole
- Bushing Style = Threaded
- Bushing Type = 1/4-40

Contact Features:

- Contact Plating = Silver

Housing Features:

- Toggle Actuation = Vertical
- Toggle Style = Baton Long
- Toggle Length (mm [in]) = 10.40 [0.410]
- Process Sealed = No

Configuration Features:

- Configuration (Pole-Throw) = Single Pole - Double Throw
- [Operating Function](#) = On On

Industry Standards:

- [RoHS/ELV Compliance](#) = RoHS compliant, ELV compliant
- [Lead Free Solder Processes](#) = Wave solder capable to 240°C, Wave solder capable to 260°C, Wave solder capable to 265°C

| | |
|--|---|
| | <ul style="list-style-type: none">• RoHS/ELV Compliance History = Always was RoHS compliant <p>Other:</p> <ul style="list-style-type: none">• Brand = Alcoswitch |
|--|---|

Corporate Information

[About TE](#)
[Investors](#)
[News Room](#)
[Supplier Portal](#)
[Careers](#)
[Terms & Conditions](#)
[Privacy Policy](#)

Quick Links

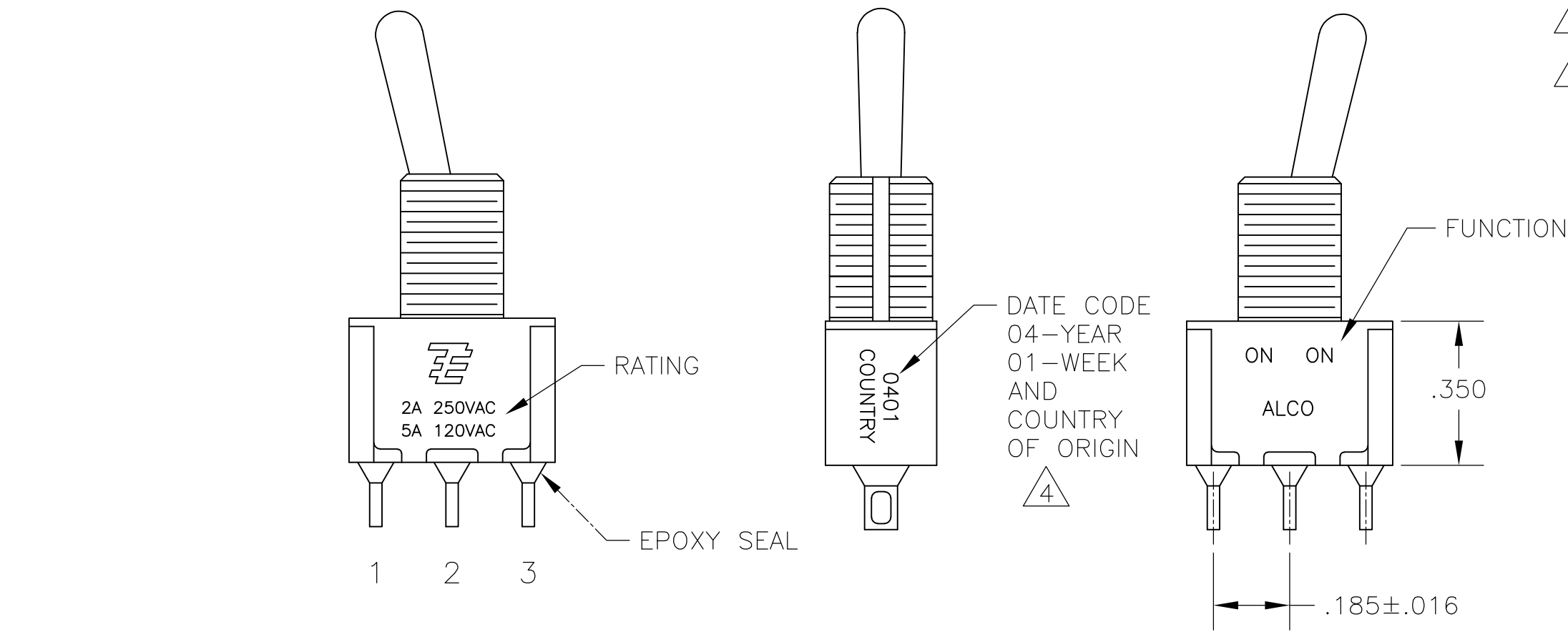
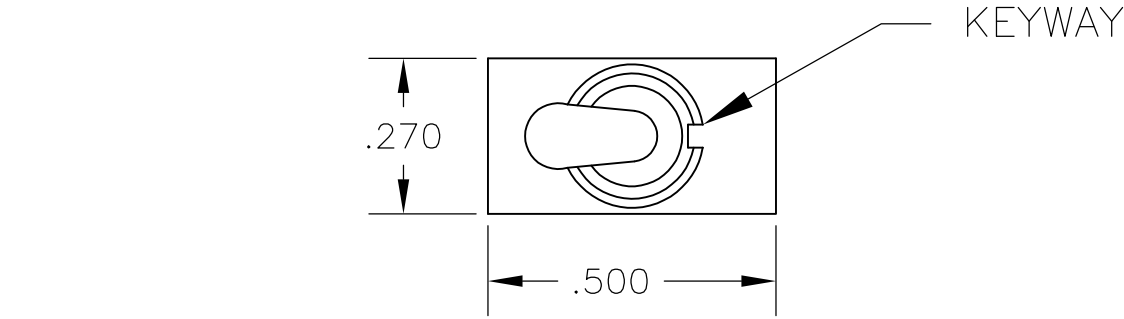
[Distributor Inventory](#)
[Product Cross Reference](#)
[Documents & Drawings](#)
[Product Compliance Support Center](#)
[Site Map](#)

Customer Support

[Email or Chat With Us](#)
[Find a Phone Number](#)
[Knowledge Base](#)
[Manage Your Account](#)

Keep Me Informed





| FUNCTION CHART | | | |
|--|-----|------|------|
| FUNCTION | | | |
| 01 | ON | NONE | ON |
| 08 | ON | NONE | (ON) |
| TERMINALS CONNECTED | 2-3 | --- | 1-2 |
| None: No mechanical position Off: Mechanical position with no electrical connection (On): Momentary action | | | |

| SPECIFICATIONS CHART | |
|---------------------------------|--|
| RATING, B CONTACTS | .4VA MAX @20V MAX. AC OR DC |
| RATING, G CONTACTS—SEE NOTE 3 | .4VA MAX @20V MAX. AC OR DC OR 5A @120 VAC OR 28 VDC (RESISTIVE) |
| | 2A @250 VAC (RESISTIVE) |
| RATING, Q CONTACTS | 5A @120 VAC OR 28 VDC (RESISTIVE) |
| | 2A @250 VAC (RESISTIVE) |
| ELECTRICAL LIFE | 6,000 CYCLES AT RATED LOAD |
| CONTACT RESISTANCE | 10 MILLIOHMS MAX INITIAL @ 2-4VDC, 100ma |
| INSULATION RESISTANCE | 1,000 MEGOHMS MIN |
| DIELECTRIC WITHSTANDING VOLTAGE | 1,000 V RMS AT SEA LEVEL |
| OPERATING TEMPRATURE | -30C TO 85C |

| PART NUMBER SEQUENCE CHART | | | | | | |
|----------------------------|----------|--------|---------|----------|---------|------|
| MODEL | FUNCTION | TOGGLE | BUSHING | TERMINAL | CONTACT | RoHS |
| A1 | 01 08 | K | CW | A | B | 04 |
| | | K1 | D | AV2 | G | |
| | | L | D9 | C | Q | |
| | | L1 | H | V30 | | |
| | | L2 | Y | V40 | | |
| | | M | Y9 | W | | |
| | | P3 | | W4 | | |
| | | S | | Z | | |
| | | T | | Z3 | | |
| | | T1 | | | | |

EXAMPLE: A101SYCQ04

THIS DRAWING IS A CONTROLLED DOCUMENT.

DIMENSIONS:
INCHES

TOLERANCES UNLESS OTHERWISE SPECIFIED:

0 PLC ± -
1 PLC ± -
2 PLC ± -
3 PLC ± .010
4 PLC ± -
ANGLES ± 2°
FINISH

DWN
B.S.VISWESWARA

CHK
M.ZITTO

APVD
P.BROUILLETTE

PRODUCT SPEC

APPLICATION SPEC

WEIGHT

CUSTOMER DRAWING

14APR05

TE Connectivity

GEMINI A SERIES TOGGLE SWITCH, SINGLE POLE, 2 POSITION FUNCTIONS (01 & 08)

SIZE
A2

CAGE CODE
00779

DRAWING NO
C=1825136

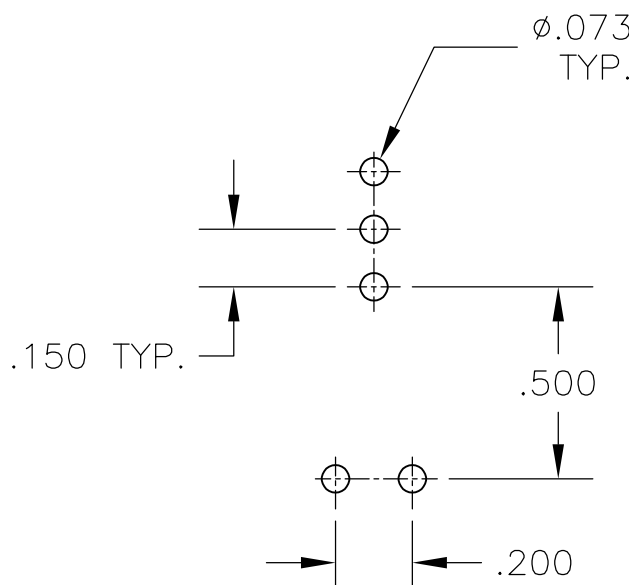
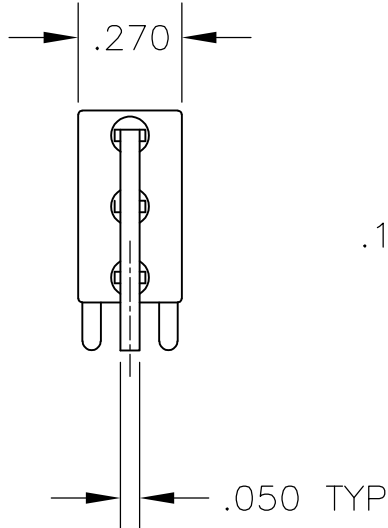
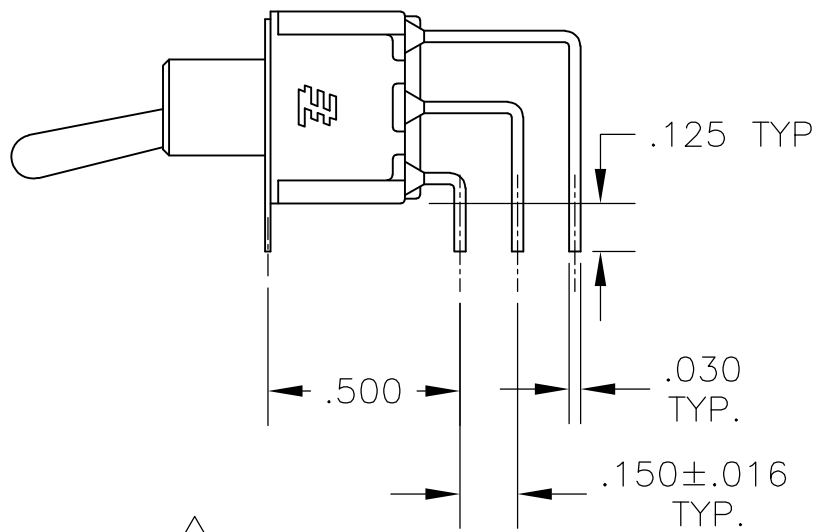
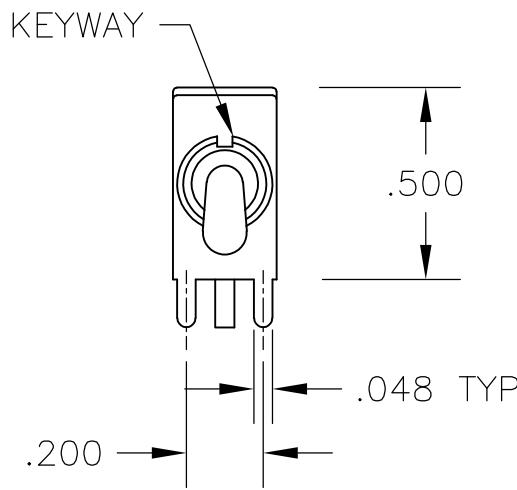
RESTRICTED TO

SCALE
3:1

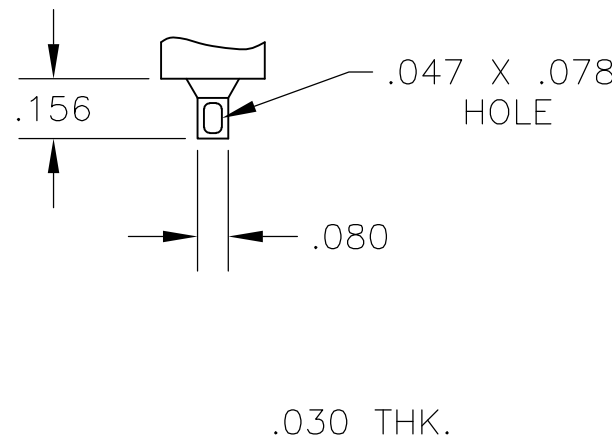
SHEET
1 of 4

REV
A4

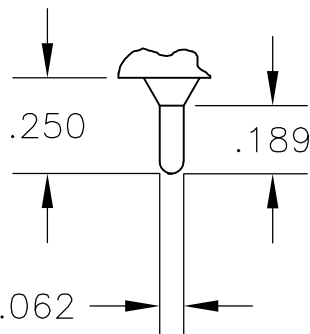
| LOC | DIST | REVISIONS | | | | | |
|-----|------|-----------|-----|-------------|------|-----|------|
| | | P | LTR | DESCRIPTION | DATE | DWN | APVD |
| AD | 00 | | — | SEE SHEET 1 | — | — | — |



RECOMMENDED
PCB LAYOUT



.030 THK.

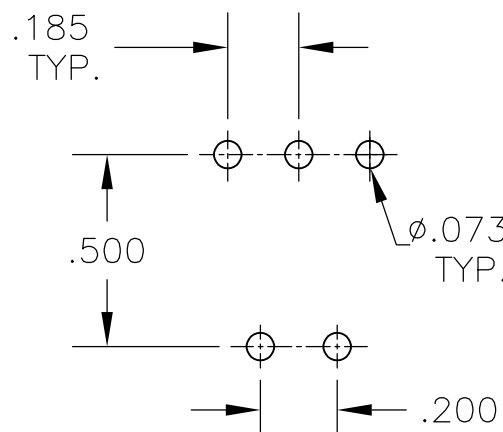
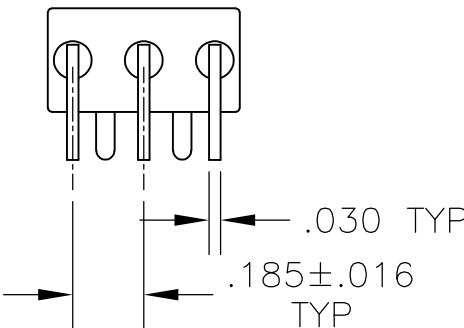
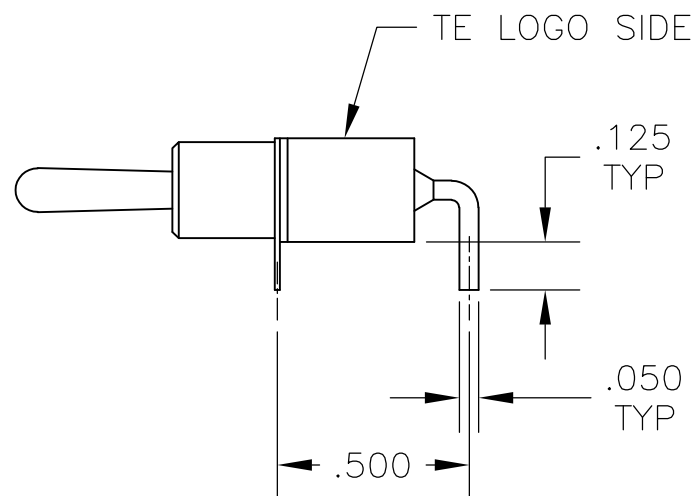
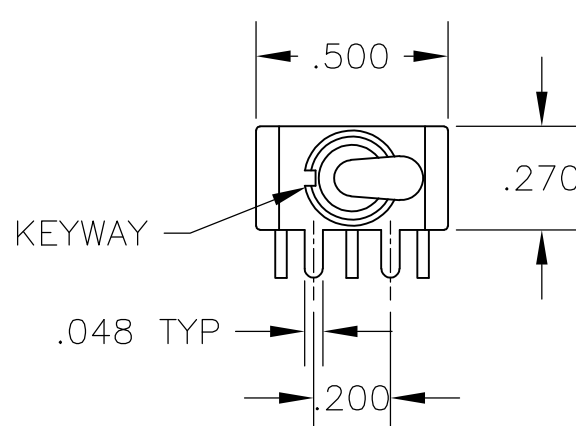


.030 THK.

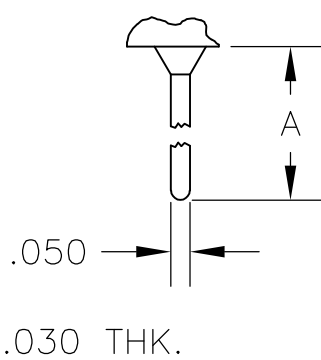
AV2 VERTICAL RIGHT ANGLE 5

Z WIRE LUG

Z3 QUICK CONNECT



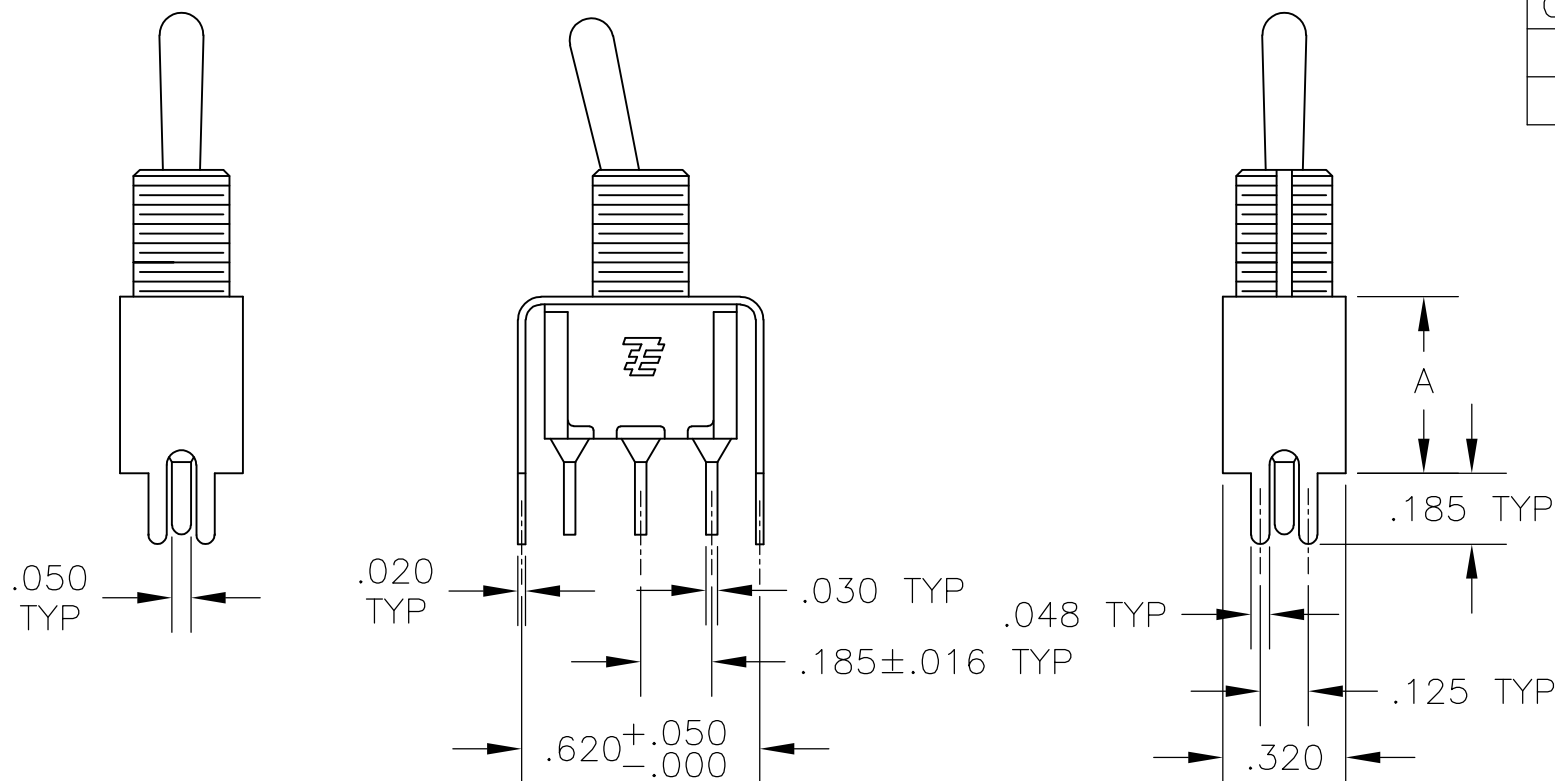
RECOMMENDED
PCB LAYOUT



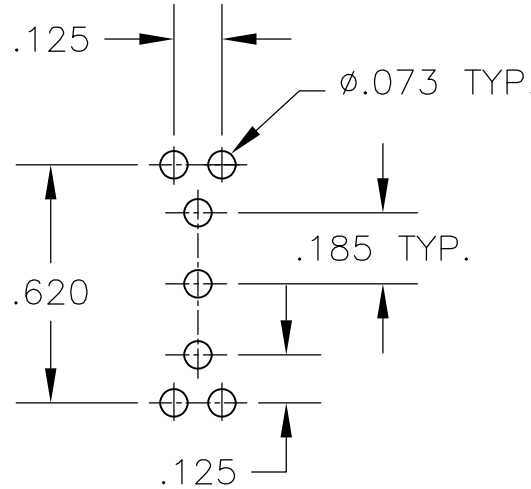
| OPTION | DIM A |
|--------|-------|
| W | .736 |
| W4 | 1.062 |

A RIGHT ANGLE 5

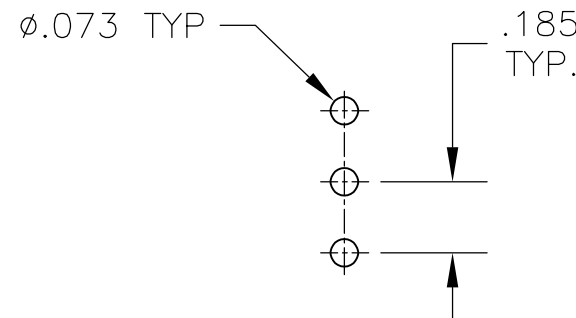
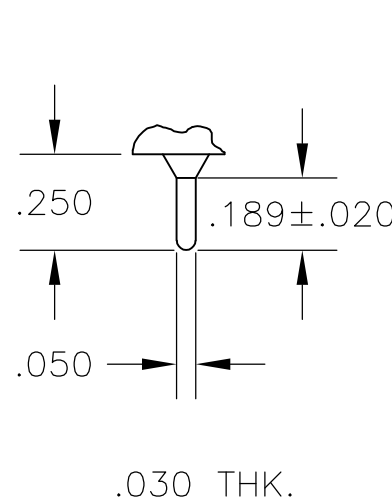
W W4 WIRE WRAP



| OPTION | DIM A |
|--------|-------|
| V30 | .460 |
| V40 | .630 |



RECOMMENDED
PCB LAYOUT



RECOMMENDED
PCB LAYOUT

V30 V40 5
VERTICAL SUPPORT BRACKET

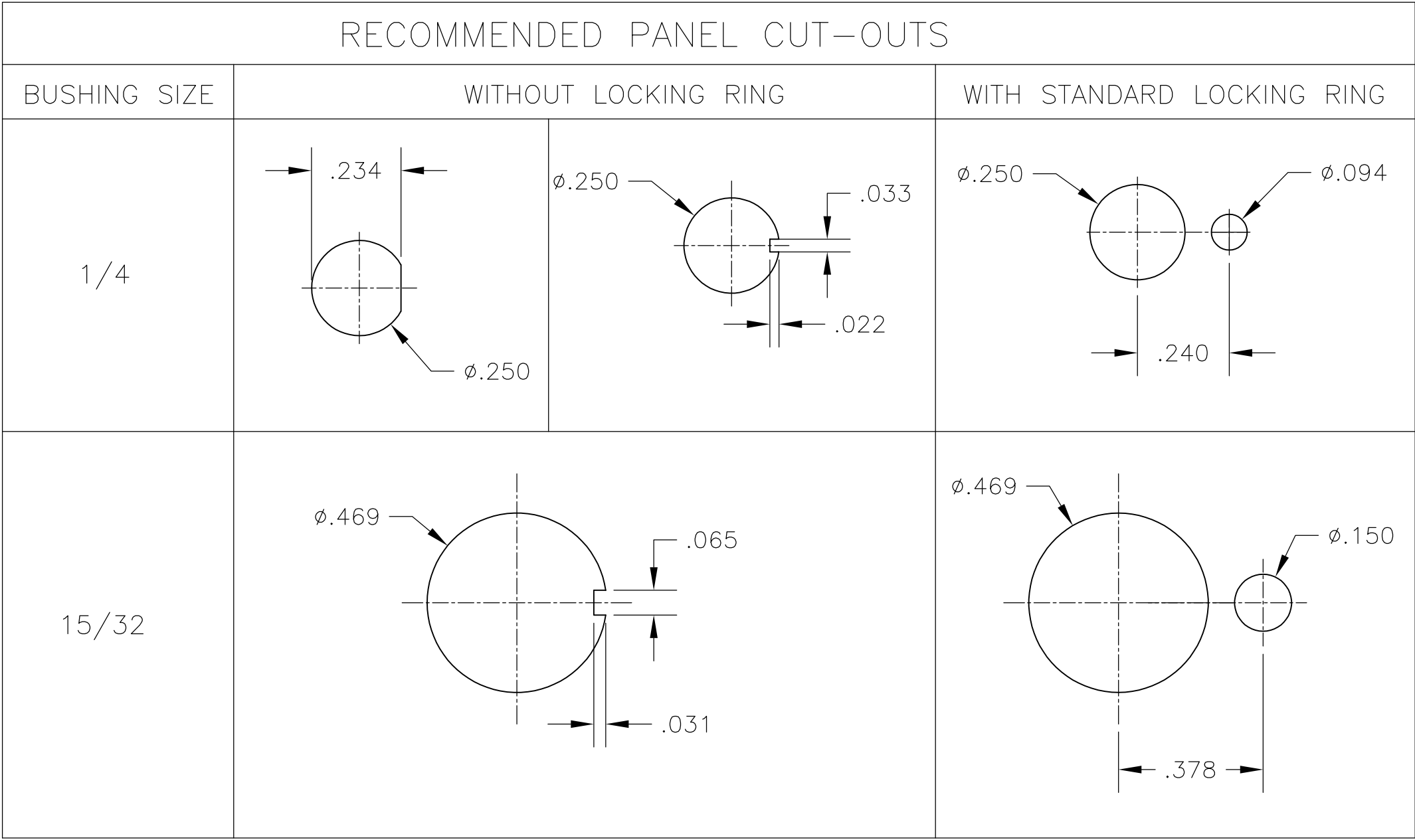
C PRINTED CIRCUIT

| | | | | | | |
|--|--|-----------------------|-------------|---|--------------------|-------------------------|
| THIS DRAWING IS A CONTROLLED DOCUMENT. | | DWN B.S.VISWESWARA | 14APR05 | TE Connectivity | | |
| DIMENSIONS: INCHES | | CHK M.ZITTO | - | | | |
| | | APVD P.BROUILLETTE | - | NAME GEMINI A SERIES TOGGLE SWITCH, SINGLE POLE, 2 POSITION FUNCTIONS (01 & 08) | | |
| | | PRODUCT SPEC | - | - | | |
| TOLERANCES UNLESS OTHERWISE SPECIFIED: | | APPLICATION SPEC | - | SIZE A2 | CAGE CODE 00779 | DRAWING NO C=1825136 |
| MATERIAL - | | FINISH - | WEIGHT - | SCALE 2:1 | SHEET 3 of 4 | REV A4 |
| | | CUSTOMER DRAWING | | RESTRICTED TO - | | |

| LOC | DIST | REVISIONS | | | |
|-----|------|-----------|-----|-------------|------|
| AD | 00 | P | LTR | DESCRIPTION | DATE |
| | | | | SEE SHEET 1 | |

| Alco P/N | P/N |
|----------------|-------------|
| A101K1V30B04 | 1825136-1 |
| A101KAB04 | 1825136-2 |
| A101KAQ04 | 1825136-3 |
| A101P3YV30B04 | 1825136-4 |
| A101KCQ04 | 1825136-5 |
| A101KD9AQ04 | 1825136-6 |
| A101KZQ04 | 1825136-7 |
| A101SYAV2B04 | 1825136-8 |
| A101L1D9V30Q04 | 1825136-9 |
| A101L1YZB04 | 1-1825136-0 |
| A101LDZQ04 | 1-1825136-1 |
| A101MD9AB04 | 1-1825136-2 |
| A101MD9AG04 | 1-1825136-3 |
| A101MD9AQ04 | 1-1825136-4 |
| A101MD9AV2B04 | 1-1825136-5 |
| A101MD9AV2G04 | 1-1825136-6 |
| A101MD9AV2Q04 | 1-1825136-7 |
| A101MD9V30B04 | 1-1825136-8 |
| A101MDAQ04 | 1-1825136-9 |
| A101MDAV2B04 | 2-1825136-0 |
| A101MDCG04 | 2-1825136-1 |
| A101MDZQ04 | 2-1825136-2 |
| A101MYCQ04 | 2-1825136-3 |
| A101MYZQ04 | 2-1825136-4 |
| A103SYAV2B04 | 2-1825136-5 |
| A101P3CB04 | 2-1825136-6 |
| A101P3ZQ04 | 2-1825136-7 |
| A101KAV2Q04 | 2-1825136-8 |
| not assigned | 2-1825136-9 |
| A101SCWCQ004 | 3-1825136-0 |
| A101SCWZQ04 | 3-1825136-1 |
| A101SD9AB04 | 3-1825136-2 |
| A101SD9AQ04 | 3-1825136-3 |
| A101SD9AV2B04 | 3-1825136-4 |
| A101SD9AV2Q04 | 3-1825136-5 |
| A101SD9V30B04 | 3-1825136-6 |
| A101SD9V30Q04 | 3-1825136-7 |
| A101SDCQ04 | 3-1825136-8 |
| A101SDZQ04 | 3-1825136-9 |
| A101SHZQ04 | 4-1825136-0 |
| A101SY9CQ04 | 4-1825136-1 |
| A101SYAB04 | 4-1825136-2 |
| A101SYAQ04 | 4-1825136-3 |
| A101SYCB04 | 4-1825136-4 |
| A101SYCQ04 | 4-1825136-5 |
| not assigned | 4-1825136-6 |
| A101SYWQ04 | 4-1825136-7 |
| A101SYZB04 | 4-1825136-8 |

| Alco P/N | P/N |
|--------------|-------------|
| A101SYZQ04 | 4-1825136-9 |
| not assigned | 5-1825136-0 |
| not assigned | 5-1825136-1 |
| A101T1ZB04 | 5-1825136-2 |
| A101T1ZQ04 | 5-1825136-3 |
| A101TCQ04 | 5-1825136-4 |
| A101TZQ04 | 5-1825136-5 |
| A108MD9AB04 | 5-1825136-6 |
| not assigned | 5-1825136-7 |
| A108P3CQ04 | 5-1825136-8 |
| A108P3ZQ04 | 5-1825136-9 |
| A108SD9AQ04 | 6-1825136-0 |
| A108SDZQ04 | 6-1825136-1 |
| A108SYCB04 | 6-1825136-2 |
| A108SYCQ04 | 6-1825136-3 |
| A108SYZQ04 | 6-1825136-4 |
| not assigned | 6-1825136-5 |
| A101SYAG04 | 6-1825136-6 |



| MATERIALS CHART | | |
|------------------------|---------------------------|------------------|
| COMPONENT NAME | BASE MATERIAL | FINISH |
| CASE | DAP, RED, UL94 V-0 | |
| FRAME | STAINLESS STEEL | |
| B TERMINALS & CONTACTS | COPPER | GOLD OVER NICKEL |
| G TERMINALS & CONTACTS | COPPER | GOLD OVER SILVER |
| Q TERMINALS & CONTACTS | COPPER | .000400 SILVER |
| ACTUATOR | PHENOLIC, BLACK, UL94 V-1 | |
| LEVER | BRASS | CHROME |
| BUSHING | BRASS | NICKEL |
| SPRING | MUSIC WIRE | |
| SUPPORT BRACKET | BRASS | TIN |
| PIVOT PIN | STEEL | NICKEL |
| LOCK WASHER | STAINLESS STEEL | |
| LOCKING RING | STAINLESS STEEL | |
| NUTS | C3604BD BRASS | NICKEL |
| TERMINAL SEAL | EPOXY | |

THIS DRAWING IS A CONTROLLED DOCUMENT.

DIMENSIONS:
INCHES

TOLERANCES UNLESS OTHERWISE SPECIFIED:

0 PLC ± -
1 PLC ± -
2 PLC ± -
3 PLC ± .010
4 PLC ± -
ANGLES ± 2°

MATERIAL

-

DWN
B.S.VISWESWARA

CHK
M.ZITTO

APVD
P.BROUILLETTE

PRODUCT SPEC

APPLICATION SPEC

WEIGHT

CUSTOMER DRAWING

14APR05

TE Connectivity

GEMINI A SERIES TOGGLE SWITCH, SINGLE POLE, 2 POSITION FUNCTIONS (01 & 08)

SIZE
A2

CAGE CODE
00779

DRAWING NO
C-1825136

RESTRICTED TO

SCALE
3:1

SHEET
4 of 4

REV
A4