

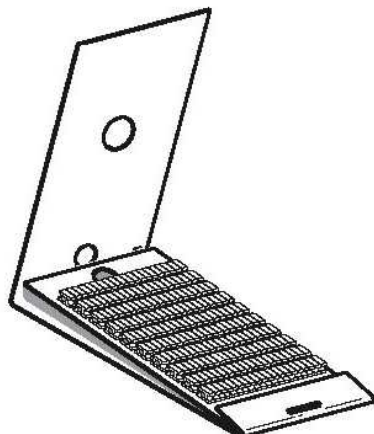
Product data sheet

Characteristics

AR1MA0198

yellow clip-in marker symbolic character '+' -
set of 200

Product availability: Non-Stock - Not normally stocked in distribution facility



Main

| | |
|---------------------------------------|-----------------------|
| Commercial Status | Commercialised |
| Range of product | Cable ends |
| Accessory / separate part designation | Wallet of 200 markers |
| Accessory / separate part type | Marker |
| Accessory / separate part category | Marking accessories |
| Product compatibility | DZ5CA |
| Accessory / separate part destination | Markable cable end |
| Background colour | Yellow |
| Marking | + |
| Quantity per set | 1 set of 200 |

Complementary

| | |
|-------------------|----------------------|
| Type of marking | Symbolic |
| Colour of marking | Black |
| Product weight | 0.22 lb(US) (0.1 kg) |

Ordering and shipping details

| | |
|-----------------------|---|
| Category | 22621 - IEC PANEL ACCESSORIES |
| Discount Schedule | I |
| GTIN | 00785901574392 |
| Nbr. of units in pkg. | 1 |
| Package weight(Lbs) | 0.01 |
| Product availability | Non-Stock - Not normally stocked in distribution facility |
| Returnability | N |
| Country of origin | FR |

Contractual warranty

| | |
|--------|-----------|
| Period | 18 months |
|--------|-----------|

The information provided in this documentation contains general descriptions and/or technical characteristics of the performance of the products contained herein. This documentation is not intended as a substitute for and is not to be used for determining suitability or reliability of these products for specific user applications. It is the duty of any such user or integrator to perform the appropriate and complete risk analysis, evaluation and testing of the products with respect to the relevant specific application or use thereof. Neither Schneider Electric Industries SAS nor any of its affiliates or subsidiaries shall be responsible or liable for misuse of the information contained herein.

Mouser Electronics

Authorized Distributor

Click to View Pricing, Inventory, Delivery & Lifecycle Information:

[Schneider Electric:](#)

[AR1MA0198](#)