

# SPEED CONTROLLER WITH ONE TOUCH FITTINGS: IN-LINE TYPE SERIES AS1000-4000

- ✓ Minimises installation time and cost
- ✓ Accepts nylon and polyurethane tubing
- ✓ Wide variety of sizes
- ✓ Speed may accurately be controlled even at low velocity
- ✓ Constant speed easily set
- ✓ Retaining prevents accidental loss of needle

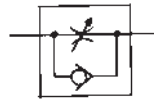


### TECHNICAL SPECIFICATIONS

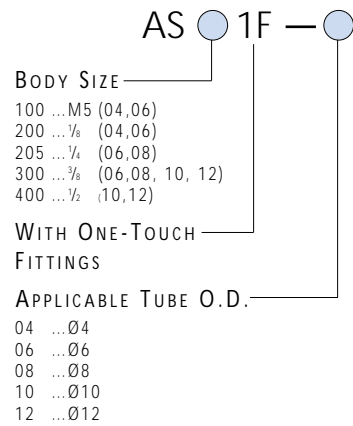
Proof pressure	(15 Bar)
Operating pressure range	(0-10 Bar)
Ambient and fluid temperature	0-60°C
Number of needle rotations	10 turns (8 turns)*

\*AS1001F type

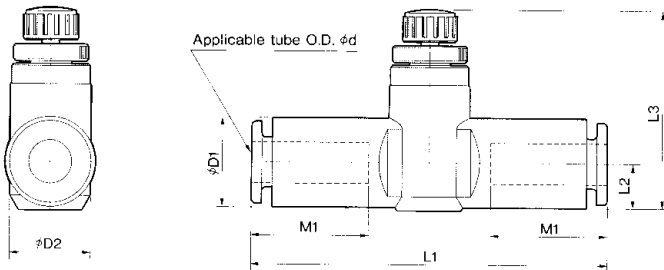
### SYMBOLS



### How To ORDER AS1000-4000



### DIMENSIONS AS1000-4000



Model	Applicable tube O.D. (d)	D1	D2	L1	L2	L3		M1
						MAX	MIN	
AS1001F	4	8.9	10	42.3	4.9	24	21.2	14.5
	6	13.2		47	6	26.2	23.2	15.5
AS20001F	4	8.9	11	43.8	5.2	32.6	27.6	14.5
	6	13.2	8	48.5	6.3	34.5	29.5	15.5
AS2051F	6	13.2	14	50.7	6	35.3	30.3	15.5
	8	15.2	8	59.8	8.1	36.5	31.5	18
AS3001F	6	13.2	19.8	59	7.4	38.3	33.3	17
	8	15.2		64.4	8.2	39.1	34.1	18
	10	18.5		71.6	9.8	40.6	35.6	21
	12	20.9		76	11	41.8	36.8	22
AS4001F	10	18.5	26	82.1	11	51.1	43.6	21
	12	20.9	5		3	52.1	44.6	22

### ACCESSORIES AS1000~4000

#### MOUNTING BRACKET MILL SIZE



Body size	Tube Size	Applicable tube					
		ø3.2	ø4	ø6	ø8	ø10	ø12
AS1001F	TMH-23J			TMH-06J			
AS2001F			TMH-04J				
AS2051F				TMH-07	TMH-08		
AS3001F						TMH-10	TMH-12
AS4001F							



FOR FURTHER TECHNICAL DETAILS ON THIS PRODUCT REQUEST CATALOGUE REFERENCE E201 & E505

## SPEED CONTROLLER WITH UNI\* ONE TOUCH FITTINGS

- ✓ Minimises installation time and cost
- ✓ Accepts nylon and polyurethane tubing
- ✓ Wide variety of sizes
- ✓ Body swivels 360°
- ✓ Speed may accurately be controlled even at low velocity
- ✓ Constant speed easily set
- ✓ Retaining prevents accidental loss of needle

\*Except M5 threaded type



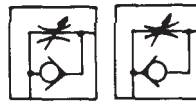
### TECHNICAL SPECIFICATIONS

Fluid	Air
Max. operating pressure	10.2 Bar
Min. operating pressure	1 Bar
Proof pressure	15.3 Bar
Ambient and fluid temperature	0 - 60°C
Number of needle revolutions	10 turns (8 turns)
Applicable tube material	Nylon, soft nylon, polyurethane
Mounting thread	Uni thread
Thread sealing	Gasket

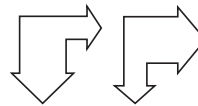
Note: be careful of the maximum operating pressure when soft nylon or polyurethane tubes are used.

\*AS1201F type ( )

### SYMBOLS



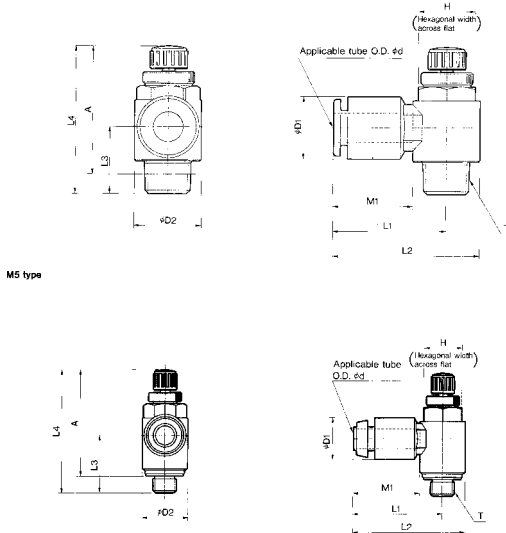
Meter-out      Meter-in



Indication on product

### DIMENSIONS

#### AS SERIES WITH ONE-TOUCH FITTINGS ELBOW TYPE



Dimensions in mm

Model	Applicable tube O.D. Ød mm	T Uni Thread	H	ØD <sub>1</sub>	ØD <sub>2</sub>	L <sub>1</sub>	L <sub>2</sub>	L <sub>3</sub>	L <sub>4</sub>		*A		M1
									MAX.	MIN.	MAX.	MIN.	
AS12 □ 1F-M5-04	4	M5x0.8	8	8.9	9.6	18.8	23.6	23.6	28.6	25.8	25.0	22.2	14.5
AS12 □ 1F-M5-06	6			11		20.2	25.0	25.0					15.5
AS22 □ 1F-U01-04	4	¾	12	8.9	14.2	21.1	28.2	14.3	36.1	31.1	30.5	25.5	14.5
AS22 □ 1F-U01-06	6			11		22.5	29.6						15.5
AS22 □ 1F-U01-08	8			15.2		25.3	32.4						18.5
AS22 □ 1F-U01-10	10			18.5		33.1	40.2						21
AS22 □ 1F-U02-04	4	¾	17	8.9	18.5	23.3	32.5	17.2	39.4	34.4	32	26.6	14.5
AS22 □ 1F-U02-06	6			13.2		25.2	34.5						15.5
AS22 □ 1F-U02-08	8			15.2		27.2	36.4						18.5
AS22 □ 1F-U02-10	10			18.5		33.9	43.2						21
AS32 □ 1F-U03-06	6	¾	19	13.2	23	27.8	39.3	19.4	45	40	37.6	32.6	15.5
AS32 □ 1F-U03-08	8			15.2		29.5	41						18.5
AS32 □ 1F-U03-10	10			18.5		31.8	43.3						21
AS32 □ 1F-U03-12	12			20.9		32.8	44.3						22
AS42 □ 1F-U04-10	10	½	24	18.5	28.6	33.6	47.9	22.4	54.6	47.1	44.5	37	21
AS42 □ 1F-U04-12	12			20.9		34.6	48.9						22

\* reference dimensions after Uni thread installation.

How To  
ORDER  
SEE NEXT PAGE

MORE DIMENSIONS  
SEE NEXT PAGE



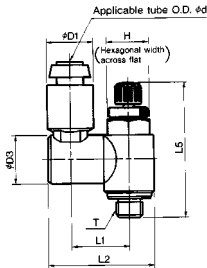
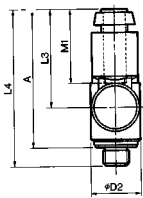
SEE INSIDE FRONT COVER FOR  
DETAILS OF YOUR LOCAL SALES OFFICE



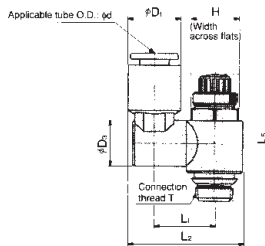
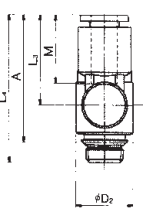
FOR FURTHER TECHNICAL  
DETAILS ON THIS  
PRODUCT REQUEST  
CATALOGUE REFERENCE  
E201 & E505

**DIMENSIONS**  
AS SERIES WITH ONE-TOUCH FITTINGS  
UNIVERSAL TYPE

**M5 TYPE**



**1/8MM~1/2MM**



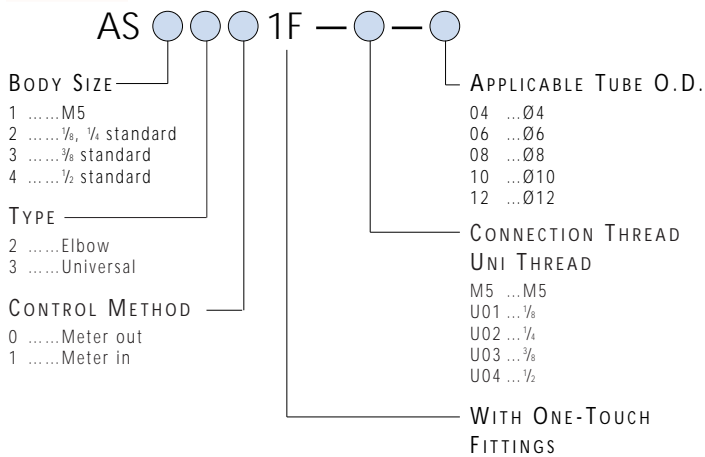
Dimensions in mm

Model	Applicable tube O.D. Ød mm	T Uni thread	H	ØD <sub>1</sub>	ØD <sub>2</sub>	ØD <sub>3</sub>	L <sub>1</sub>	L <sub>2</sub>	L <sub>3</sub>	L <sub>4</sub>	L <sub>5</sub>		*A		M				
											MAX	MIN	MAX	MIN					
AS13 □ 1F-M5-04	4	M5x0.8	8	8.9	9.6	9.3	11.1	20.3	18.9	30.2	28.6	25.8	25.0	22.2	14.5				
AS13 □ 1F-M5-06	6			11.0				21.4							19.9	31.2	15.5		
AS23 □ 1F-U01-04	4	1/8	12	8.9	14.2	9.3	13.4	24.8	18.9	33.2	36.1	31.1	30.5	25.5	14.5				
AS23 □ 1F-U01-06	6			11				10.9							14.5	27.1	20.6	34.9	15.5
AS23 □ 1F-U01-08	8			15.2				12.9							16.2	30.9	24.7	38.2	18.5
AS23 □ 1F-U02-04	4	1/4	17	8.9	18.5	9.3	15.6	29.2	18.9	36.1	39.4	34.4	32	26.6	14.5				
AS23 □ 1F-U02-06	6			13.2				11.4							17.4	33.2	22.3	40.5	15.5
AS23 □ 1F-U02-08	8			15.2				18.3							35.2	24.4	40.8	18.5	
AS23 □ 1F-U02-10	10			18.5				12.9							19.6	38.1	26.8	43.2	21
AS33 □ 1F-U03-06	6	3/8	19	13.2	23	11.4	19.6	37.7	22.3	44.8	45	40	37.6	32.6	15.5				
AS33 □ 1F-U03-08	8			15.2				12.9							20.6	39.7	24.4	42.8	18.5
AS33 □ 1F-U03-10	10			18.5				16.2							22.5	43.3	28.3	47.7	21
AS33 □ 1F-U03-12	12			20.9				23.5							45.5	29.3	48.7	22	
AS43 □ 1F-U04-10	10	1/2	24	18.5	28.6	16.2	25.3	48.9	28.3	50.7	54.6	47.1	44.5	37	21				
AS43 □ 1F-U04-12	12			20.9				19.4							26.9	51.6	30.8	53.2	22

\* reference dimensions after Uni thread installation.

**HOW TO ORDER**

AS SERIES WITH ONE-TOUCH FITTINGS

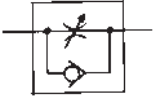


**STOCKED PRODUCTS**  
FOR A LIST OF STOCKED PRODUCTS,  
PLEASE SEE THE CURRENT SMC PRICE LIST

## SPEED CONTROLLER IN-LINE TYPE SERIES AS1000-4000

- ✓ Compact size saves space
- ✓ Speed may accurately be controlled even at low velocity
- ✓ Constant speed easily set
- ✓ Retaining prevents accidental loss of needle
- ✓ Panel Mount option available

### SYMBOLS

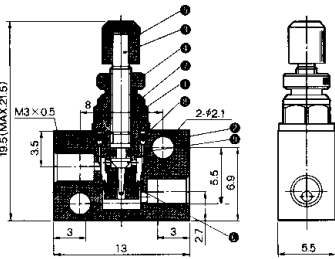


### TECHNICAL SPECIFICATIONS

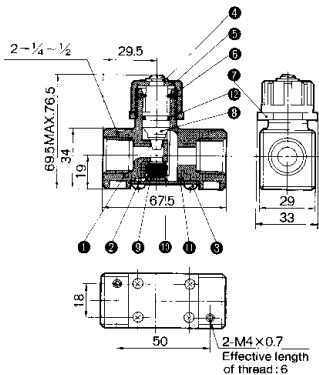
Proof pressure	15 Bar (10.7 Bar)
Max. operating pressure	10 Bar (7.1 Bar)
Min. operating pressure	0.51 Bar (1 Bar)
Ambient and fluid temperature	5 - 60°C
Number of needle rotations	8 turns (10 turns)
Panel cut out dimensions	AS1000 Not Applicable
	AS2000 Ø16.5
	AS3000 Ø16.5
	AS4000 Ø25.0

( ) values for AS1000 only

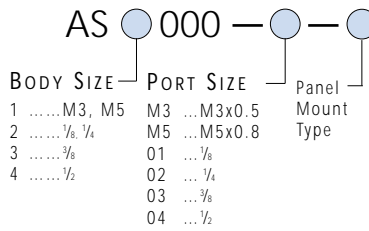
### DIMENSIONS AS1000-M3



### DIMENSIONS AS4000



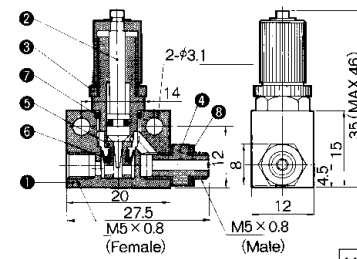
### HOW TO ORDER AS1000-4000



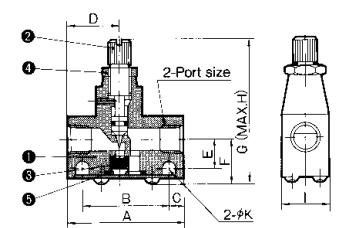
**STOCKED PRODUCTS**  
FOR A LIST OF STOCKED PRODUCTS,  
PLEASE SEE THE CURRENT SMC PRICE LIST



### DIMENSIONS AS1000-M5



### DIMENSIONS AS2000, 3000



Model	Port size	A	B	C	D	E	F	G	H	I	ØK
AS2000-01	1/8	40	30	5	17	10	15.5	50	54.5	16	4.5
AS2000-02	1/4	40	30	5	23	11.5	17	51.5	56	20	4.5
AS3000-02,03	1/4, 3/8	56	45.5	5.25	25	13.2	20.6	61	68	26	5.5



SEE INSIDE FRONT COVER FOR  
DETAILS OF YOUR LOCAL SALES OFFICE



FOR FURTHER TECHNICAL  
DETAILS ON THIS  
PRODUCT REQUEST  
CATALOGUE REFERENCE  
E201 & E505