

# The Next Generation of Panel Meters

Easy to Use. Easy to Read.



## Advanced Panel Meter (APM)

**Programmable dynamic backlight colour**

**Warning flash**

**40** segment curved bar graph display

**Models:**  
Voltage  
Frequency  
Current

**Combined digital and bar graph display**

**Programmable scale**

**Programmable 4 digit star-burst display**

**Custom messages & annunciators**

**2** alarm set points

**WIDE viewing angle**

**USB 2.0**  
USB port for custom user settings

**16** Position switch for selecting standard configurations

**Full 4 digit readout for accuracy**

**PLC**

**2 outputs - digital and analogue**

**Less than 53mm deep**

### The latest innovative Advanced Panel Meter is now available from Trumeter!

The Trumeter APM is the most visible, easy to use, multi-format, programmable panel meter on the market. Providing you with the highest level of accuracy and an immediate visual indication of your critical parameters. The APM has been specifically designed for engineers requiring a more effective way of monitoring and displaying data. The Trumeter APM is a cost-effective alternative to the traditional moving coil and expensive digital panel meters. Trumeter - Revolutionising the future of panel meters.

## Key Features

### Large multi-format display that incorporates:

- 40 segment bar graph display
- Large 4 digit display
- Separate Starburst display area for annunciators, custom messages and alarm information
- Dynamic backlight colour

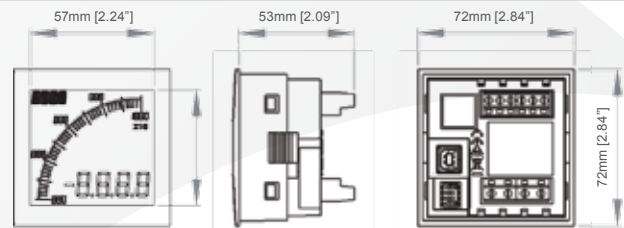
### Visibility:

- User adjustable backlight brightness and colour
- Large display
- Wide viewing angle (both horizontal and vertical)
- Custom annunciators

### Programmable:

- Scale (offset and gain) and Range (min and max)
- Custom annunciators
- User selectable backlight color and intensity
- Two independent alarm set-points
- Two independent outputs (output models only)
- 4-20mA analogue monitor output (output models only)

### Dimensions:

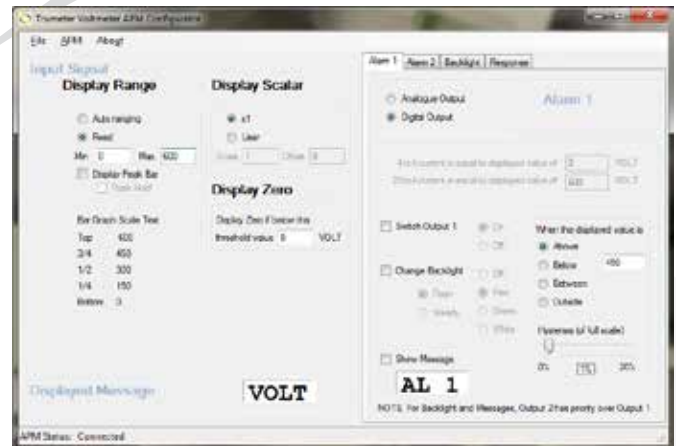


Panel cutout: 68mm x 68mm [2.68" x 2.68"] as per DIN43700/IEC61554

| MEASUREMENT                  | VOLT     | AMP                      | FREQUENCY |
|------------------------------|----------|--------------------------|-----------|
| Input range (DC)             | 0 - 600V | 0 - 5A                   | -         |
| Max Using Shunt              |          | 1000A                    |           |
| Input range (AC)             | 0 - 528V | 0 - 5A                   | 0 - 400Hz |
| Max Using CT                 |          | 1000A                    |           |
| Accuracy                     | 1%       | 1%                       | 0.1%      |
| Display modes                |          | Peak or RMS              |           |
| <b>ENVIRONMENTAL</b>         |          |                          |           |
| Temperature - operating      |          | -10 to +60°C             |           |
| Temperature - storage        |          | -40 to +70°C             |           |
| IP rating (from the front)   |          | IP65                     |           |
| <b>POWER SUPPLY</b>          |          |                          |           |
| Nominal Input (AC or DC)     |          | 12-24 VAC/VDC            |           |
| <b>DISPLAY</b>               |          |                          |           |
| Number of digits             |          | 4                        |           |
| Digit height                 |          | 12mm [0.47"]             |           |
| Digit height of annunciator  |          | 6mm [0.23"]              |           |
| Number of message characters |          | 4                        |           |
| Backlight colours            |          | Red, Green, White        |           |
| LCD display                  |          | Positive or Negative     |           |
| <b>OUTPUT MODELS</b>         |          |                          |           |
| Max voltage                  |          | 24V                      |           |
| Max current                  |          | 50mA                     |           |
| Analogue output              |          | 4-20mA                   |           |
| <b>CERTIFICATION</b>         |          |                          |           |
|                              |          | UL and cUL (Pending), CE |           |

## Easy To Use Software

Just plug into any USB port on your PC, run the freely available APM Configurator application and you're off. No drivers required.



Part Numbers: (POS LCD = Positive LCD; NEG LCD = Negative LCD)

| Volt         | Description                          | Amp         | Description                       | Frequency    | Description                          |
|--------------|--------------------------------------|-------------|-----------------------------------|--------------|--------------------------------------|
| APM-VOLT-APN | APM VOLT METER, POS LCD              | APM-AMP-APN | APM AMMETER, POS LCD              | APM-FREQ-APN | APM FREQ METER, POS LCD              |
| APM-VOLT-APO | APM VOLT METER, POS LCD WITH OUTPUTS | APM-AMP-APO | APM AMMETER, POS LCD WITH OUTPUTS | APM-FREQ-APO | APM FREQ METER, POS LCD WITH OUTPUTS |
| APM-VOLT-ANN | APM VOLT METER, NEG LCD              | APM-AMP-ANN | APM AMMETER, NEG LCD              | APM-FREQ-ANN | APM FREQ METER, NEG LCD              |
| APM-VOLT-ANO | APM VOLT METER, NEG LCD WITH OUTPUTS | APM-AMP-ANO | APM AMMETER, NEG LCD WITH OUTPUTS | APM-FREQ-ANO | APM FREQ METER, NEG LCD WITH OUTPUTS |
| 022128-01    | USB Cable                            |             |                                   |              |                                      |

Full specifications available online [www.truAPM.com](http://www.truAPM.com)

