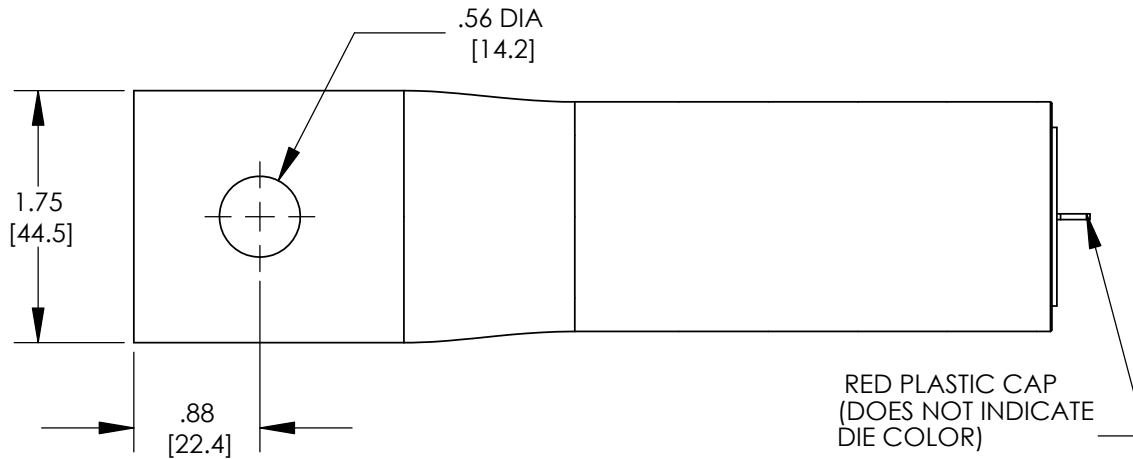


THIS COPY IS PROVIDED ON A RESTRICTED BASIS AND IS NOT TO BE USED IN ANY WAY DETRIMENTAL TO THE INTERESTS OF PANDUIT CORP.

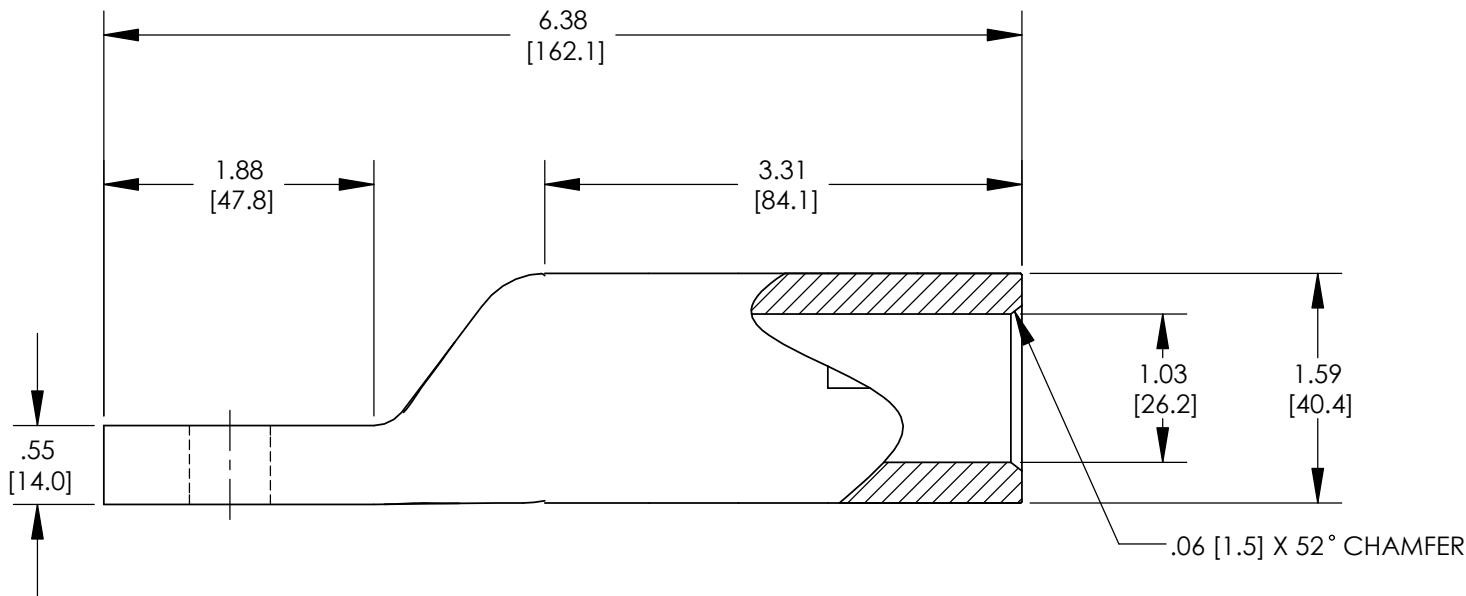


NOTES:

1. DIMENSIONS IN PARENTHESIS ARE MILLIMETERS.
2. UL LISTED.
DUAL RATED CU9AL FOR ALUMINUM OR COPPER
CONDUCTORS
3. MATERIAL: ALUMINUM, TIN PLATED
4. STUD SIZE: 1/2"
5. FOR USE WITH STRANDED ALUMINUM/COPPER
WIRE ONLY.
WIRE SIZE: 750kcmil
6. PREFILLED WITH ANTI-OXIDANT PASTE.
7. ALL DIMENSIONS SHOWN ARE NOMINAL.
8. PACKAGE QUANTITY: -3 = 3



LISTED



DIE COLOR CODE	YELLOW
HOMAC / T&B DIE INDEX	140H
HOMAC TOOL	UT15
T&B TOOL	TBM15
BURNDY DIE INDEX	301, 342
BURNDY TOOL	Y45

C41727_02

02	9/07	JHNU	LEM	REVISED NOTE 2: REMOVED CSA CERTIFIED REMOVED CSA LOGO FROM DRAWING					<p>ALUMINUM LUG (AL-750-48TN-3) CUSTOMER DRAWING</p>		
01	8/07	JHNU	LEM	REVISED NOTE 4: 1/2" WAS 9/16" ADDED CRIMPING INFORMATION TABLE							
00	8/07	JHNU	LEM	DRAWING RELEASED							
REV	DATE	BY	CHK	DESCRIPTION	ECN	PM	APP	DRAWN BY JHNU	CHK'D	SCALE NONE	DRAWING NO / CAD FILE C41727