

1

2

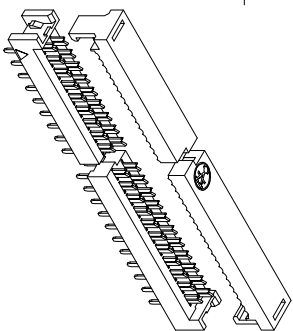
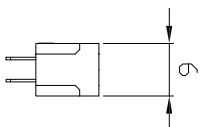
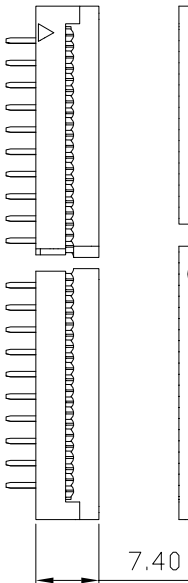
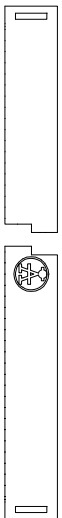
3

4

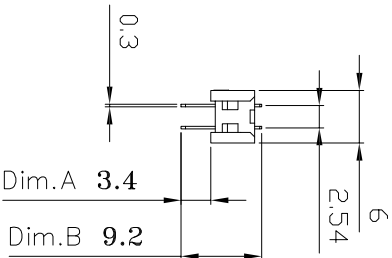
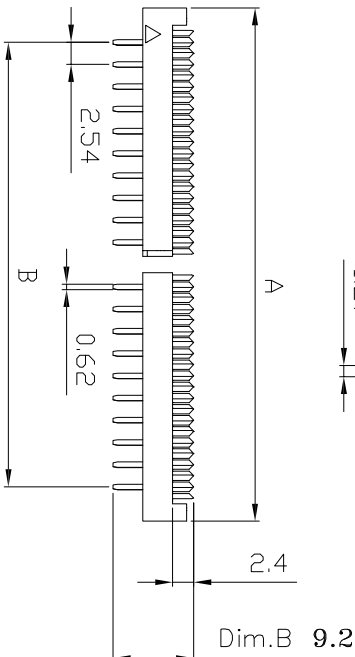
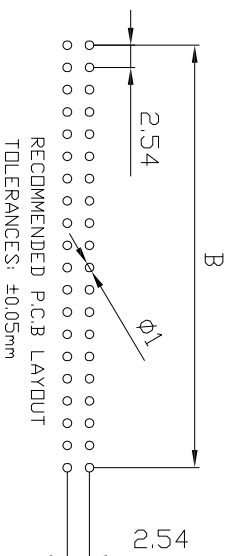
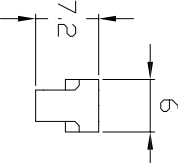
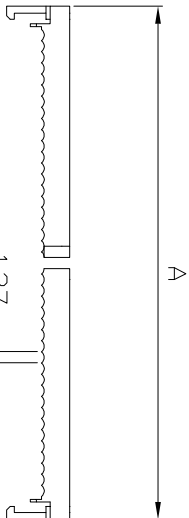
5

6

7



MATERIALS:  
 INSULATOR: P.B.T. 30%GLASS FIBER,UL94V-0  
 CONTACT MATERIAL: BRASS OR PHOSPHOR BRONZE,  
 UNDERPLATED: NICKEL  
 CONTACT AREA: 1u" ~ 30u" SELECTIVE GOLD  
 ELECTRICAL:  
 CURRENT RATING: 1AMP.  
 INSULATION RESISTANCE: 1000MQ MIN.  
 DIELECTRIC WITHSTANDING: 500VAC  
 OPERATING TEMPERATURE: -55C~+105C



POSITION	A	B	POSITION	A	B
6P	12.94	5.08	26P	38.40	30.48
8P	15.48	07.62	28P	40.60	33.02
10P	18.10	10.16	30P	43.50	35.56
12P	20.51	12.70	34P	48.38	40.64
14P	23.05	15.24	40P	56.20	48.26
16P	25.64	17.78	50P	69.00	60.96
18P	28.15	20.32	60P	81.75	73.66
20P	30.78	22.86	64P	86.83	78.74
24P	35.86	27.94			

**ROHS compliant**  
 Unit: mm

Scale	FREE
TOLERANCE	
X.X	+0.4
X.XX	+0.25
X.XXX	+0.15
DIM	TOL
Angle	+3°
Angle	TOL

Id.	Modification	Date	Name
①	Drawn	26.05.2014	Ray

Date	Name
26.05.2014	Ray
26.05.2014	Ray

Customer-No.	ASSMANN WSW-No.	Drawing-No.	Replace
		ASS 6447 CO	rev00
		AWLP-xx-3-2-G	Sheet

1

2

3

4

5

6

7

Scale	FREE
TOLERANCE	
X.X	+0.4
X.XX	+0.25
X.XXX	+0.15
DIM	TOL
Angle	+3°
Angle	TOL

Date	Name
26.05.2014	Ray
26.05.2014	Ray

Customer-No.	ASSMANN WSW-No.	Drawing-No.	Replace
		ASS 6447 CO	rev00
		AWLP-xx-3-2-G	Sheet

H

G

F

E

D

C

B

A

H

G

F

E

D

C

B

A