

Interactive Catalog Supplements Catalog PDFs

If you need detailed product information, or help choosing the right product for your application, see our **Interactive Catalog**. Use the **Interactive Catalog** to access the most complete and up-to-date information available.

The **Interactive Catalog** provides an extensive collection of product specifications, application data, and technical literature that can be searched based on criteria you select.

This PDF catalog information was published in November 2000.



Sensing and Control
**Interactive
Catalog...**

**Click this icon to try
the Interactive Catalog.**

Sensing and Control
Honeywell Inc.
11 West Spring Street
Freeport, IL 61032



www.honeywell.com/sensing

Manual Switches

Electronic Control Pushbutton

AML21 Series

INCANDESCENT OR NON-LIGHTED DISPLAY



Buttons ordered separately.

| | |
|---------------------|-------------|
| Electrical Data | page 11 |
| Buttons | page 30/31 |
| Lamps and LEDs | page 46 |
| Accessories | pages 44/45 |
| Mounting Dimensions | pages 47/50 |

FEATURES

- 1, 2, or 4 poles.
- Silver or gold contacts.
- Full guard bezel option.
- Momentary or 2-level alternate action (push-on, push-off).
- UL recognized, CSA certified.
- Lamps can be furnished installed or ordered separately.
- Lamp circuit independent of switch circuit.



*AML21 Series: 1 pole and 2-pole only.

AML21 ORDER GUIDE

AML21 B

| Housing Type | Bezel Color | Incandescent Lamp Type | Terminal Type | Circuitry Codes (Each pole has double-throw) | |
|--|-------------------|--|--|--|--|
| Standard Bezel: AML21B Square Non-Lighted AML21C Square 1 Lamp Ckt. AML21E Rect. Non-Lighted AML21F Rect. 1 Lamp Ckt. AML21G Rect. 2 Lamp Ckts. Full Guard Bezel: AML21H Square Non-Lighted AML21J Square 1 Lamp Ckt. AML21K Rect. Non-Lighted AML21L Rect. 1 Lamp Ckt. AML21M Rect. 2 Lamp Ckts. | B Black | A No Lamp Installed B 6 V Lamp* C 14 V Lamp* E 28 V Lamp* | 2 .110 × .020 (Solder or Quick-Connect) 3 .025 × .025 (Printed Ckt. or Push-On) | Silver Contacts | Mom. Action AA 1-Pole AC 2-Pole CC 4-Pole |
| | | | | | Alt. Action AB 1-Pole AD 2-Pole CD 4-Pole |
| | | | | Gold Contacts | Mom. Action BA 1-Pole BC 2-Pole DC 4-Pole |
| | | | | | Alt. Action BB 1-Pole BD 2-Pole DD 4-Pole |
| | | | | Gold-Plated Silver Contacts | Mom. Action EA 1-Pole EC 2-Pole |
| | | | | | Alt. Action EB 1-Pole ED 2-Pole |

* Lamps will be installed per each lamp circuit specified in the Housing Type.

Example: **AML21BBA2AA**
Square pushbutton switch housing non-lighted; black bezel; .110 × .020 termination; momentary action; 1-pole, double-throw; silver contacts.

Manual Switches

Electronic Control Pushbutton

AML22 Series

LED DISPLAY



Buttons with LED "window" ordered separately.
LEDs are not replaceable.

FEATURES

- Identical to AML21 switches, except furnished with high efficiency LED display.
- Rectangular LED's are flush with button surface, providing wide angle indication.
- Optional diode protection for LED's.
- 5 thru 24 VDC LED devices have an internal resistor to maintain current at nominal 20 mA.
- UL recognized, CSA certified.
- LED circuit independent of switch circuit.

| | |
|---------------------|-------------|
| Electrical Data | page 11 |
| Buttons | pages 30/31 |
| Lamps and LEDs | page 46 |
| Accessories | pages 44/45 |
| Mounting Dimensions | pages 47/50 |



*AML22 Series: 1 pole and 2-pole only.

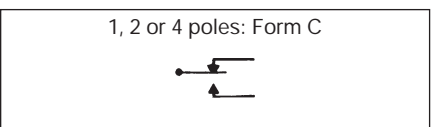
AML22 ORDER GUIDE

| AML22 C | | | | | B | | B | | 2 | | AA | | | |
|--|--|--|--|--|-------------------|--|--|--|---|--|---|--|--|--|
| Housing Type | | | | | Bezel Color | | LED Color/ Voltage | | Terminal Type | | Circuitry Codes (Each pole has double-throw) | | | |
| Standard Bezel: AML22C Square 1 LED AML22H Square 1 High-Profile LED (For use with AML52-A buttons) | | | | | B Black | | Red B V* C 5V D 10V E 15V F 24V Yellow H V* J 5V K 10V L 15V M 24V Green R V* S 5V T 10V W 15V X 24V | | 2 .110 × .020 (Solder or Quick-Connect) 3 .025 × .025 (Printed Ckt., or Push-On) 8 .110 × .020 With Diode Protection for LED | | Silver Contacts | | Mom. Action AA 1-Pole AC 2-Pole CC 4-Pole | |
| Full Guard Bezel: AML22J Square 1 LED | | | | | | | | | | | Gold Contacts | | Mom. Action BA 1-Pole BC 2-Pole DC 4-Pole | |
| | | | | | | | | | | | Gold-Plated Silver Contacts | | Mom. Action EA 1-Pole EC 2-Pole | |
| | | | | | | | | | | | | | Alt. Action EB 1-Pole ED 2-Pole | |

* See LED information for devices without current limiting resistor, page 46.

Example: **AML22CBB2AA**
Square pushbutton switch housing with one LED, black bezel; red LED (without resistor); .110 × .020 termination; momentary action, 1-pole, double-throw; silver contacts.

CONTACT ARRANGEMENT

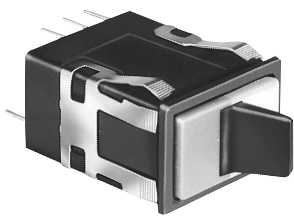


Manuals

Manual Switches
Electronic Control Paddle

AML23 Series

INCANDESCENT OR NON-LIGHTED DISPLAY



Covers ordered separately.

- FEATURES
• Silver or gold contacts.
• 1, 2 or 4 poles.
• Toggle type paddle operators permanently installed in rectangular housings.
• Covers for the switch housing may be lighted or unlighted.
• UL recognized, CSA certified.
• Lamps can be furnished installed or ordered separately.
• Lamp circuit independent of switch circuit.

Electrical Data page 11
Paddle Covers page 35
Lamps and LEDs page 46
Accessories page 45
Mounting Dimensions pages 47/50

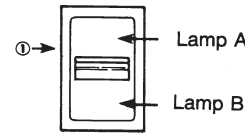


*AML23 Series: 1 pole and 2-pole only.

*AML23 ORDER GUIDE

Table with 6 columns: Housing Type, Operator/Bezel Color, Incandescent Lamp Type, Terminal Type, Circuitry Codes, and Operating Action. It details the configuration for AML23 E, F, and G models.

* Lamps will be installed per each lamp circuit specified in the Housing Type.



The "MICRO SWITCH" identification is shown on this side of the switch housings.

Example: AML23EBA2AA01
Rectangular non-lighted paddle switch housing; black paddle and bezel; .110 x .020 terminals; with one circuit ON and one circuit OFF in each extreme operator position (maintained).

CIRCUITRY

Table showing circuit diagrams for Silver and Gold contacts in 2-Position and 3-Position configurations. It includes terminal numbers and switch symbols.

OPERATING ACTION

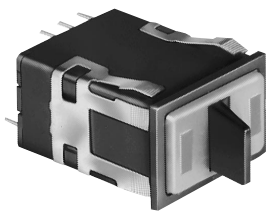
Table showing operating actions for 2-Position and 3-Position switches, including maintenance (Maint.) and momentary (Mom.) states for various codes.

Manual Switches

Electronic Control Paddle

AML25 Series

LED DISPLAY



Covers with LED "window" ordered separately.

FEATURES

- Identical to AML23, except furnished with one or two rectangular high efficiency LED's which give flush display area and wide angle indication.
- Available with or without diode protection for LED's.
- LED circuit independent of switch circuit.

| | |
|---------------------|-------------|
| Electrical Data | page 11 |
| Paddle Covers | page 36 |
| Lamps and LEDs | page 46 |
| Accessories | page 45 |
| Mounting Dimensions | pages 47/50 |

- 5 thru 24 VDC devices have internal resistor to maintain current at nominal 20 mA.
- UL recognized, CSA certified.



*AML25 Series: 1 pole and 2-pole only.

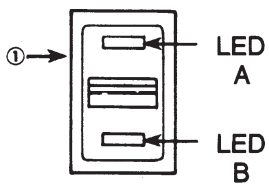
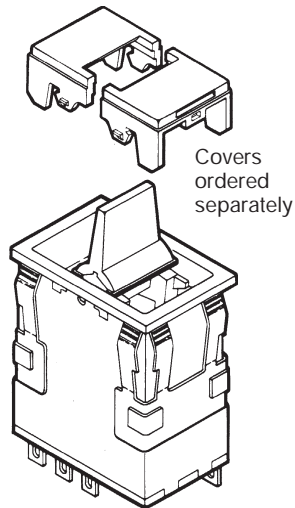
AML25 ORDER GUIDE

| Housing Type | Operator/ Bezel Color | LED Voltage | Terminal Type/ Diode Protection | Circuitry Codes | Operating Code | LED Color (LED A) | LED Color (LED B) |
|--|-------------------------|---|--|--|---|--|--|
| AML25 F Rectangular 1 LED | B Black/Black | B V* | 2 .110 x .020 (Solder or Q-C) | Insert code letters as shown in Circuitry Chart | Insert code numbers from Operating Action Chart | R Red Y Yellow G Green X No LED | R Red Y Yellow G Green X No LED |
| AML25 G Rectangular 2 LED's | | C 5 V D 10 V E 15 V F 24 V | 3 .025 x .025 (Printed Ckt., or Push-On) 8 .110 x .020 w/Diode protection | LED version available only with AA BA CA DA circuitry | | | |

* See LED application information for devices without current-limiting resistor, page 46.

Example: **AML25FBB2AA01RX**
Rectangular paddle switch; illuminated with one red LED, this device has a black paddle and bezel, and .110 x .020 terminals; with one circuit ON and one circuit OFF in each extreme operator position (maintained).

NOTE: For further information on replacement LED's, call the 800 number.



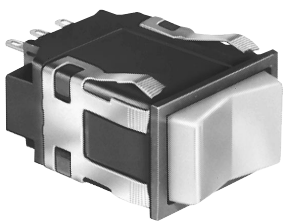
① The "MICRO SWITCH" identification is shown on this side of the switch housings.

Manuals

Manual Switches
Electronic Control Rocker

AML24 Series

INCANDESCENT OR NON-LIGHTED DISPLAY



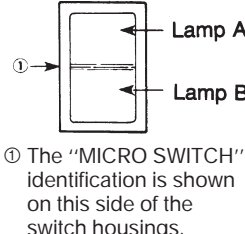
- Silver or gold contacts.
- 2 or 3 position operation.
- UL recognized, CSA certified.
- Lamps can be furnished installed or ordered separately.
- Lamp circuit independent of switch circuit.

Electrical Data page 11
Rockers page 39
Lamps page 46
Accessories pages 44/45
Mounting Dimensions pages 47/50

UL, CSA, DVE, CE logos.
*AML24 Series: 1 pole and 2-pole only.

AML24 ORDER GUIDE
AML24 E

Table with 6 columns: Housing Type, Bezel Color, Incandescent Lamp Type, Terminal Type, Circuitry Codes, Operating Action.
Housing Type: AML24 E (Rectangular Non-Lighted), AML24 F (Rectangular 1 Lamp Ckt. (A)), AML24 G (Rectangular 2 Lamp Ckts.).
Bezel Color: B (Black).
Incandescent Lamp Type: A (No Lamp Installed), B (6 V Lamp*), C (14 V Lamp*), E (28 V Lamp*).
Terminal Type: 2 (.110 x .020 (Solder or Quick-Connect)), 3 (.025 x .025 (Printed Ckt., or Push-on)).
Circuitry Codes: AA (Insert Code letters as shown in Circuitry Chart).
Operating Action: 01 (Insert Code numbers from Operating Action Chart).



* Lamps will be installed per each lamp circuit specified in the Housing Type.

Example: AML24EBA2AA01
Rectangular non-lighted rocker switch housing; black bezel; .110 x .020 terminals; with one circuit ON and one circuit OFF in each extreme operator position (maintained).

CIRCUITRY

Table showing circuit diagrams for Silver/Gold Contacts (AA, AC, CA, CC) and 2-Position/3-Position switches. Includes terminal numbering (1-12) and a legend for terminal positions.

OPERATING ACTION

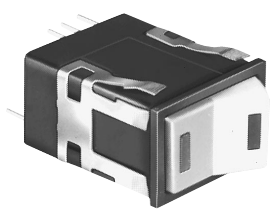
Table showing operating action for 2-Position and 3-Position switches. Columns include Maint., Code (01-07), and Mom. (Momentary).

Manual Switches

Electronic Control Rocker

AML26 Series

LED DISPLAY



Rocker operators ordered separately.
LEDs are not replaceable.

FEATURES

- Identical to AML24, except furnished with one or two rectangular high efficiency LED's which give flush display area and wide angle indication.
- Available with or without diode protection for LED's.
- LED circuit independent of switch circuit.

| | |
|---------------------|-------------|
| Electrical Data | page 11 |
| Rockers | page 40 |
| Lamps and LEDs | page 46 |
| Accessories | page 45 |
| Mounting Dimensions | pages 47/50 |

- 5 thru 24 VDC LED devices have internal resistor to maintain current at nominal 20 mA.
- UL recognized, CSA certified.



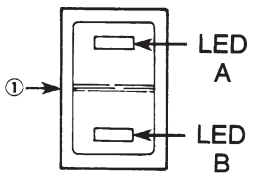
*AML26 Series: 1 pole and 2-pole only.

AML26 ORDER GUIDE

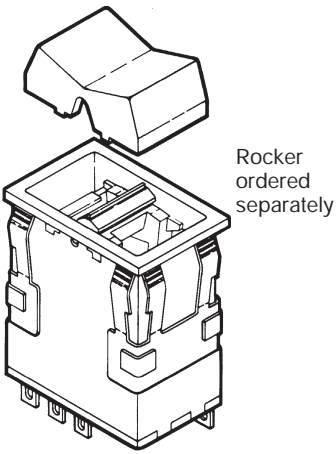
| Housing Type | Bezel Color | LED Voltage | Terminal Type/ Diode Protection | Circuitry Codes | Operating Action | LED Color (LED A) | LED Color (LED B) |
|--------------------|-------------|-------------|--|--|---|-------------------|-------------------|
| AML26 F 1 LED | B Black | B V* | 2 .110 × .020 (Solder or Quick-Connect) | Insert code letters as shown in Circuitry Chart | Insert code numbers from Operating Action Chart | R Red | R Red |
| AML26 G 2 LED's | | C 5 V | 3 .025 × .025 (Printed Ckt., or Push-On) | LED version available only with AA, BA, CA, DA circuitry | | Y Yellow | Y Yellow |
| | | D 10 V | 8 .110 × .020 w/Diode for LED protection | | | G Green | G Green |
| | | E 15 V | | | | X No LED | X No LED |
| | | F 24 V | | | | | |

* See LED application information for devices without current-limiting resistor, page 46.

Example: **AML26FBB2AA01RX**
Rectangular rocker switch; illuminated with one LED, this device has a black bezel, .110 × .020 terminals; with one circuit ON and one circuit OFF in each extreme operator position (maintained).



① The "MICRO SWITCH" identification is shown on this side of the switch housings.



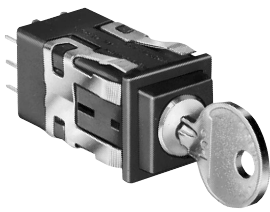
Rocker ordered separately

Manuals

Manual Switches
Electronic Control Keylock

AML27 Series

NON-LIGHTED



FEATURES

- Enable control of access to computer peripherals, keyboards, point-of-sale terminals, and security systems which are locked when unattended; and other locations where tampering must be discouraged.
 - 2 or 3 positions, maintained (90° throw) and momentary action (60° throw).
 - 5-bit key combinations
- Electrical Data

Accessories

Mounting Dimensions
- page 11

pages 44/45

pages 47/50
- UL recognized, CSA certified.
 - Static discharge protection (up to 20 kV when grounded).

AML27 ORDER GUIDE

| AML27 A | B | K | 2 | AA | 21 | BA |
|----------------|-------------|--------------|--|--|---|----------------------|
| Housing Type | Bezel Color | Button Color | Terminal Type | Circuitry Codes (Each pole has double-throw) | Operation Action (Key out in center position, except where noted) | Key Combinations |
| AML27 A | B | K | 2 | Silver Contacts: AA | CCW | (Two Keys Furnished) |
| Square housing | Black | Black | .110 x .020 (Solder or Quick-Connect) | 1 pole AC | Center | BA BS |
| Non-Lighted | | | 3 | 2 pole BC | CW | BB BT |
| | | | .025 x .025 (Printed Circuit or Push-On) | Gold Contacts: BA | | BD BV |
| | | | | 1 pole BC | | BE BW |
| | | | | 2 pole | | |

REPLACEMENT KEYS

One key per listing.

| Key Combination | Key Code | Catalog Listing |
|-----------------|----------|-----------------|
| BA | 110 | 30PA101-AML |
| BB | 109 | 30PA102-AML |
| BD | 107 | 30PA104-AML |
| BE | 106 | 30PA105-AML |
| BS | 117 | 30PA117-AML |
| BT | 118 | 30PA118-AML |
| BV | 119 | 30PA119-AML |
| BW | 120 | 30PA120-AML |

Specify different Key Combinations to acquire different keys, i.e.; AML27ABK2AA21BB and AML27ABK2AA21BE have different keys. AML27ABK2AA21BB and AML27ABK3BC25BB have identical interchangeable keys. Example: AML27ABK2AC28BB Square housing; black bezel and button; .110 x .020 terminals; 2-pole double-throw; silver contacts; 3-position maintained and key code "BB".

| CCW | Center | CW |
|--------|--------------|--------|
| None | 21 Maint. | Maint. |
| None | 22* Maint. | Maint. |
| None | 23 Maint. | Mom. |
| Maint. | 24 Maint. | Maint. |
| Mom. | 25 Maint. | Mom. |
| Maint. | 26** Maint. | Maint. |
| Mom. | 27*** Maint. | Maint. |
| Maint. | 28*** Maint. | Maint. |
| Maint. | 29† Maint. | Maint. |
| Maint. | 30† Maint. | Mom. |
| Maint. | 31†† Maint. | Mom. |

28 and 29 operating actions should be used with Key Combinations BA and BB.

* Key out in both positions.
** Key out in all three positions.
*** Key out in center and CW positions.
† Key out in center and CCW positions.
†† Key out in CCW only.

CIRCUITRY

2-Position Switches:

| | Normal Position* | Key Turned to Right (CW) |
|--------|------------------|--------------------------|
| 1 Pole | | |
| 2 Pole | | |

Note: These keys fit the 5-bit keylocks in the Order Guide.

3-Position Switches (Available in 2-pole only.)

| | Key Turned to Left (CCW) | Normal Position* | Key Turned to Right (CW) |
|--------|--------------------------|------------------|--------------------------|
| 2 Pole | | | |

* Circuit remains the same with key in or out.